



SHENANDOAH'S
SHINING STARS
Fall Production Sale

SATURDAY, NOVEMBER 25, 2023
AT THE FARM | QUICKSBURG, VA | 1:00 PM EST

Simmental & SimAngus Genetics

47 Age-Advantage and Yearling Bulls & 31 Pairs, Bred Females and Ready to Breed Heifers



Visit the historic Shenandoah Valley and take in the beautiful colors of the season and enjoy the nearby historic sites. Close area attractions include, Virginia Museum of Civil War: New Market State Historical Park / Shenandoah Valley Travel Association [New Market] / Andrew Zirkle Mill [Forestville] / Showalter's Orchard [Timberville] / Shenandoah Caverns [Quicksburg]

Directions to the Sale

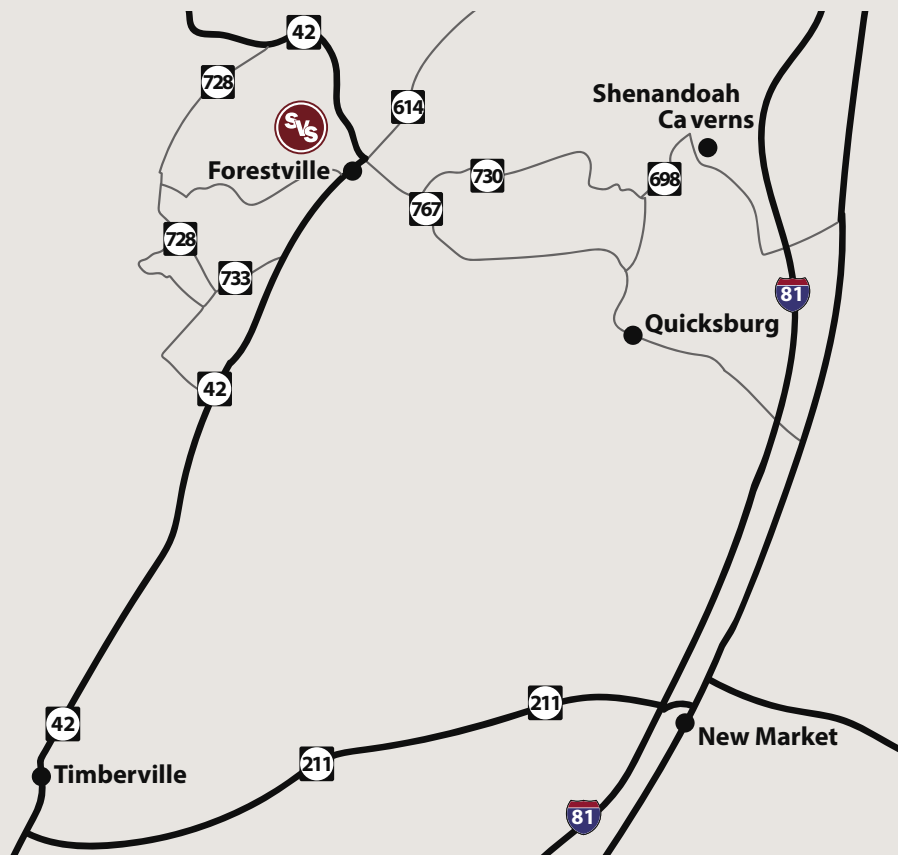
From the North:

From I-81 take Mt. Jackson Exit# 273. Turn **RIGHT** off the ramp. Turn **LEFT** on S. Middle RD. Proceed through the next stop sign to a 4-way stop at Forestville. Go straight through the intersection onto RT. 42 South (Senedo RD.) Go approximately 0.3 and turn right on S. Middle RD. Farm is second lane on the **RIGHT**. (6 miles from interstate).

From the South:

From I-81 N take New Market Exit# 264. Turn **LEFT** off the ramp onto RT. 211 West. Turn **Right** at the stoplight at Timberville onto RT. 42 North (Senedo RD.) Turn **LEFT** on S. Middle RD. Farm is second lane on the **RIGHT**. (9 miles from interstate).

DO NOT FOLLOW GPS WHEN COMING FROM THE SOUTH. IT IS INCORRECT.



Sale Managed by Ruble Cattle Services

Jeremie Ruble, 406-581-7940 / rublecattleservices@gmail.com
1525 140th Street Corydon, IA 50060 / www.facebook.com/RubleCattleServices

www.rublecattleservices.com

SHENANDOAH'S SHINING STARS

SATURDAY, NOVEMBER 25, 2023
AT THE FARM | QUICKSBURG, VA | 1:00 PM EST

WELCOME FELLOW CATTLEMEN AND CATTLEWOMEN!

Hello Everyone!

It's sale time and we're SUPER excited about this offering. It's the best yet! Please join us Saturday, November, 25, 2023 at 1:00 pm in Virginia's beautiful Shenandoah Valley.

We've been breeding Simmentals for 46 years in the mountains of rural Virginia. This herd is our pride and joy. The cattle are treated with respect, well-cared for, and always eat before we do. Our motto is "Home of the Keepin' Kind" and the cattle in this offering are definitely keepers! We're committed to sharing our top genetics and you can buy with confidence.

Many fads have come and gone, but we've continued to breed proven, practical, predictable cattle that thrive in many environments. We focus on maintaining original cow family genetics that got us where we are today. We don't just focus on numbers. Look at these beauties! Oldies are still goodies!!! Cattle pay our bills and these cattle flat out perform. These are one-of-a-kind, outcross genetics you won't find anywhere else.

These gorgeous ladies are high maternal, performance females. They're "pasture pretty" and should excel as unique donors and highly productive brood cows. For through the roof numbers, breed them to hot new sires and watch their genetic potential explode. Having spring and fall calving herds gives us flexibility to keep our calving season tight. If a heifer needs a little more grow time before breeding, we move her to the next season. Please note that in Spring 2024 no females will be offered. So, if you're looking for front pasture females, now is your chance!

The bulls are athletes, developed in Virginia range conditions. They're

designed to efficiently convert grass to meat, thrive on fescue, travel rough country, and withstand the wide weather extremes experienced in these mountains.

This has been a tough year. A severe drought made hay yields less than half of the norm and we've fed hay all year. Springs were dry at turnout and water has been hauled all season. Corn yields are poor and we're extremely short-handed. I'm a hands-on owner/operator and my boots are always on the ground. That's why I got behind with catalog preparation. Sometimes Life gets in the way of even the most well-made plans. But, we keep rolling with the punches because, that's what farmers/ranchers do! There's always a promise of a better day, and we're still smiling!

Please visit our website for the on-line catalog and videos and contact me with any questions. Sale time is an extended family reunion where friends gather to talk cow. It continually amazes us how many long-term friendships develop from the simple purchase of a cow. We appreciate our customers who believe not just in our cattle, but the program behind them.

A sincere thanks to those good-hearted, dedicated friends who help make this sale possible, with special thanks to Barry Armstrong for his help year-round.

Cattle will be available for viewing after 2 pm Friday, November 24. Stay safe and healthy my friends!

Hope to see you soon! - Lisa Zirkle



Lisa Zirkle, Owner



**SHENANDOAH VALLEY
SIMMENTALS**

Lisa Zirkle, Owner | 540-335-1885 (cell)
3691 S Middle Road Quicksburg, VA 22847
Fax: 540-740-3014 | Email: lisaz1@shentel.net
Barry Armstrong, 540-975-1474

📍 Shenandoah Valley Simmentals, Boers, and Tunis
www.shenandoahvalleysimmentals.com

WELCOME

On behalf of Ruble Cattle Services and Shenandoah Valley Simmentals, we welcome you to this year's fall sale. We have the great pleasure of once again working with Miss Lisa Zirkle as a sales management team. It is truly remarkable to work with such a storied program that has been breeding Simmental cattle in the mountains of rural Virginia since 1976. Their motto "Home of the Keepin' Kind" could not be more accurate. The bulls are perfectly developed out in the open range and because of this, they are athletic and ready to breed cows as soon as you take them home. The bulls and females are from top-of-the-line cow families proven to work on fescue and in range conditions. The entire offering is a great blend of maternal and performance with forage-converting efficiency bred into them. When you purchase cattle from Shenandoah Valley Simmentals you are making an investment in a program that has been here in the past and will be here long into the future. This sale offering will be one of the best in the country for rugged bulls and top-end females in all stages of production. Miss Lisa has used the top genetics from Triangle J Ranch, River Creek Farms, Gibbs Farms, Keller Broken Heart Ranch, and others to blend with her outstanding cow families. With this year's up-and-down weather and drought in her area, the time-tested genetics from SVS have once again proven their work. It is hard to find this many front-end females and bulls, especially in a pure-bred package anywhere in the country. Miss Lisa has done a masterful job of breeding and developing the lots in this year's production sale. This summer I visited all the pastures and development areas with Miss Lisa. I came away from my trip in awe of the set of cattle working on fescue and mountain pastures. I was also able to make herd visits as far away as AL and WY to see her genetics thriving in other environments. Her cattle perform in any location in the US. Miss Lisa's cattle work for her so she doesn't have to work for them. I promise they will go home and work for you! I will be out a few days ahead of the sale diligently taking notes on the entire offering.

Please feel free to contact any of our sale management team with any questions. We are here to serve you in any capacity.

- Jeremie Ruble, Ruble Cattle Services



406-581-7940 (cell)
515-850-8741
rublecattleservices@gmail.com
www.rublecattleservices.com

SALE CONSULTANTS & STAFF

SALE DAY PHONES: 540-740-2530, 540-740-2527

Jeremie Ruble, Ruble Cattle Services	406-581-7940
Jeremie Ruble, Ruble Cattle Services, alt. number	515-850-8741
Lisa Zirkle, Shenandoah Valley Simmentals	540-335-1885
Martin Macqueen, Consultant	540-839-9494
Martin Macqueen, alt. number	540-965-2199
Dalton Lundy, Consultant	502-727-6898
Jeff Stansberry, Auctioneer	615-479-1852
Charlie Strickler, Ring Service	540-718-7793
Phil Richardson, Ring Service	865-250-1375
Miles Eddy, Ring Service	507-841-1787

TRUCKING

Lowell Caplinger, Trucking	540-560-9293
Dick Coleman, Trucking	765-461-0954
Craig Kaisand, Trucking	641-891-9666
Menno Bontrager, Trucking	641-247-1469
Brian Wyatt, Trucking	423-240-5533
Tyson Berg, Trucking	304-257-3419
Duane Whiting, Trucking	304-377-9179

VETERINARIAN

Dr. Justin Hill, Herd Veterinarian

SALE LOCATION

Shenandoah Valley Simmentals

3691 S. Middle Road

Quicksburg, VA 22847

Directions and sale map available on the inside front cover.

VIDEOS

Videos of all the lots will be available prior to the sale at
www.dvauction.com and ShenandoahValleySimmentals.com



SALE MANAGER

Ruble Cattle Services

Jeremie Ruble, cell

Jeremie Ruble, alt. number

1525 140th Street Corydon, IA 50060

rublecattleservices@gmail.com

www.facebook.com/RubleCattleServices

www.rublecattleservices.com

TERMS AND CONDITIONS

All Animals will be sold in accordance with suggested guidelines of the American Simmental Association.

ANNOUNCEMENTS

Announcements made sale day take precedence over printed material in the catalog or other printed material associated with the sale.

SALE REGISTRATION AND PAYMENT

Buyer numbers will be issued with a valid ID, and payment is due the day of the sale, unless prior arrangements have been made. Timely payment of purchases is much appreciated.

HOUSING YOUR PURCHASE

Bulls and females will be fed and cared for free of charge for one week following the sale and will be housed at a rate of \$7.00 per day thereafter until you pick up your purchase. All animals must be picked up by December 9, 2023 to allow SVS space to develop new cattle.

INSURANCE

Insurance will be available sale day or by asking any of the team members. We strongly recommend Jame Kreiger 812-208-0956



We are proud of our heritage and our farm's history. We strive to preserve the past to honor those before us.

LIABILITY

All persons attending the sale do so at their own risk. Shenandoah Valley Simmentals assumes no responsibility, legal or otherwise, for personal injury or loss while attending the sale, or for damages, illnesses, accidents or theft. All cattle are at the purchaser's risk as soon as sold. Assistance will be given in loading and shipping of cattle, but no risk is assumed by anyone associated with the sale.

ACCOMMODATIONS

Quality Inn Shenandoah Valley..... 540-740-3141
 162 W Old Cross Rd, New Market, VA 22844
 Holiday Inn Express Woodstock..... 540-459-5000
 1130 Motel Dr, Woodstock, VA 22664
 Courtyard by Marriott 540-432-3031
 1890 Evelyn Byrd Ave, Harrisonburg, VA 22801

REGISTRATION AND UPDATED EPDS

All cattle will be registered with the American Simmental Association. Please note EPDs may change from the time the sale book is printed until the registration papers are transferred. EPDs printed in the catalog were pulled from IGS on November 7, 2023. Shenandoah Valley Simmentals will transfer cattle to the buyer at the seller's expense after full payment is received. Buyers must provide the sale clerk with complete information for transferring registration certificates.

HERD HEALTH

All females will sell with proper health certificates for immediate interstate shipment. The bred females have been pregnancy examined and are confirmed safe, unless otherwise posted or announced. For cattle leaving Virginia, a Certificate of Veterinary Inspection will be available for immediate shipment. Cattle that require additional tests will be conducted within one week of the sale at the buyer's expense. Each animal will be at the purchaser's risk immediately following the auction.

LIVE BROADCAST

DVAuction Tech Support 402-316-5460
 Bid live online at www.dvauction.com

Bid Online

DVAuction

BULL GUARANTEE

All bulls have passed a complete breeding soundness examination performed by a veterinarian. All bulls are guaranteed for breeding soundness and injury for the first breeding season, defined as 90 days from the first turnout, barring abuse, neglect and poor management practices. If a replacement bull is needed, one of equal value will be provided. If a replacement bull is not available, a sale credit will be provided to use at the next SVS sale minus the documented salvage value of the previous purchase.

SEMEN INTEREST

Shenandoah Valley Simmentals will be selling full possession and 70% semen interest of all bulls and retaining 30% semen interest. The buyer has full control, full possession, 100% of the salvage value and 70% semen interest. Any bulls that Shenandoah Valley Simmentals wishes to collect for in-herd use semen will be done at the buyer's convenience and Shenandoah Valley Simmental's expense. This will affect very few bulls.

FEATURE COW FAMILIES



SVS SNICKERDOODLE US09
PB SM / ASA# 2494168
SVS KEEP DREAMIN RNB1 X SVS SANDY S019



SVS WHAT A DOLL MB10
PB SM / ASA# 2161707
PVF-BF BF26 BLACK JOKER X PVF-BF BG10 DOLL BE22



SVS RIGHT AS RAIN ASOA
PB SM / ASA# 2947439
MR NLC UPGRADE U8676 X SVS SANDY S019



SVS SANDY S019
PB SM / ASA# 2371234
BLACK IRISH KANSAS X COTT KELBY 019K



SVS LILY XS19
PB SM / ASA# 2591380
SVS HUMDINGER TR21 X SVS SARAH S19K



COTT KELBY 019K
PB SM / ASA# 2064474
MR BEEF E141 X COTTONWOOD ENHANCED 809D



SVS LADY BUG WNBA
PB SM / ASA# 2536068
CNS DREAM ON L186 X SVS DOLLS JOKER NB10



SVS BROWN SUGAR WS8A
PB SM / ASA# 2542863
GWS EBONYS TRADEMARK 6N X SVS SEA WIND S87A



COTT RED SILK 887H
PB SM / ASA# 1975403
BBS ZIMA D55 X NICHOLS BEAT 85U



SVS NATALIE NDW7
PB SM / ASA# 2202896
BF K030 RED SNAPPER X SVS LEADERS RED LADY

FEATURE SIRES



SVS BADLANDS BSNL
3/4 SM 1/4 AN / ASA# 2947416
TJ SHARPER IMAGE 809U X SVS SUGAR-N-SPICE SNL2



SVS RAWHIDE BXPZ
PB SM / ASA# 3000007
MR NLC UPGRADE U8676 X SVS SONG BIRD XPFZ



SVS HUMDINGER TR21
PB SM / ASA# 2452973
CNS DREAM ON L186 X SVS REBEKAH RM21



SVS BELL RINGER ANL3
PB SM / ASA# 2875231
MR NLC UPGRADE U8676 X SVS NORRICE NLJ3



SVS SHENANDOAH ZWNA
PB SM / ASA# 2652950
ELLINGSON LEGACY M229 X SVS LADY BUG WNBA



SVS RELOAD WPF7
PB SM / ASA# 2542822
SRS RIGHT-ON 22R X SVS RUBY BLACK PF7A



**SHENANDOAH VALLEY
SIMMENTALS**

Lisa Zirkle, Owner | 540-335-1885 (cell)
www.shenandoahvalleysimmentals.com

**Shenandoah Valley Semen and Embryos
Available Private Treaty**

SPRING BRED HEIFERS



LOT 1



LOT 2

1

SVS SERENDIPITY JFTJ

PB SM
POLLED
BLACK
Tattoo
JFTJ
ASA#
4074181
DOB
12/10/21

WS ALL-AROUND Z35

SVS EVERCLEAR FAR2

SVS SPELLBOUND ARK2

WS ALL-AROUND Z35

SVS WISH UPON A STAR FT1J

SVS TARA T12J

WS BEEF KING W107
CDI MS HIGH ROLLER 39W
SRS RIGHT-ON 22R
SVS ROSANNE RKC2
WS BEEF KING W107
CDI MS HIGH ROLLER 39W
BF K065 TALLADEGA
SCC LETS TANGO 124J

Adj. BW	Adj. WW	CE	BW	WW	YW	ADG	MCE	Milk	MWW	EPDs %
78	777	11.6	1.7	84.9	121.3	0.23	6.5	23.7	66.1	
		45		25	40		40		35	
Stay	Doc	CW	YG	Marb	BF	REA	Shr	API	TI	EPDs %
16.6	13.3	31.5	-0.38	0.10	-0.092	0.75	-0.31	132.6	80.8	
45	30	40		30					45	

AI'd to MILL BAR HICKOK 7242 (ASA# 3219932) on 6/1/23. PE to SVS STAMPEDE JDUM (ASA# 3960961) from 6/20/23 to 10/1/23.

SVS SERENDIPITY JFTJ is a beautiful, blaze-face purebred daughter of SVS EVERCLEAR FAR2 and is a double bred WS ALL-AROUND Z35. This heifer from the SCC LETS TANGO 124J cow family puts it all together. She's stout, big bodied and has a lot of bone. She will make a tremendous cow. She was Aled to MILL BAR HICKOK 7242 and pasture exposed to SVS STAMPEDE JDUM. Good things are gonna happen here!

2

SVS MOUNTAIN MIDNIGHT JXRD

1/2 SM
1/2 AN
POLLED
BLACK
Tattoo
JXRD
ASA#
3960955
DOB
10/17/21

BASIN FRANCHISE P142

EF COMPLEMENT 8088

EF EVERELDA ENTENSE 6117

SVS GOLD FINGER SLF2

SVS SAPPHIRE XRLD

SVS ROXIE RLD3

C A FUTURE DIRECTION 5321
BASIN CHLOE 812L
BR MIDLAND
H F EVERELDA ENTENSE 869
SS GOLDMINE L42
SVS LUCINDA
BF K065 TALLADEGA
SVS LINDY

Adj. BW	Adj. WW	CE	BW	WW	YW	ADG	MCE	Milk	MWW	EPDs %
74	584	12.9	-0.3	68.4	105.5	0.23	8.6	23.7	57.8	
		45	40				20	45		
Stay	Doc	CW	YG	Marb	BF	REA	Shr	API	TI	EPDs %
15.0	14.1	34.6	-0.09	0.27	-0.023	0.42	-0.34	126.1	72.3	
45	30	40								

AI'd to RVR ROGUE 530H (ASA# 3923371) on 6/1/23. PE to SVS STAMPEDE JDUM (ASA# 3960961) from 6/20/23 to 10/1/23.

SVS MOUNTAIN MIDNIGHT JXRD is a solid black, slick-haired, half-blood SimAngus daughter of EF COMPLEMENT 8088 from our great female making SVS GOLD FINGER SLF2 genetics. This high capacity, broody female has an exceptional disposition. She was Aled to RVR ROGUE 530H and pasture exposed to SVS STAMPEDE JDUM. Here's one to take home!

SPRING BRED HEIFERS

3

SVS DAYBREAK JAR8

PB SM

POLLED

BLACK

Tattoo

JAR8

ASA#

4074217

DOB

10/30/21

CCR COWBOY CUT 5048Z

SVS HIGH FLYER FASB

SVS VIRGINIA BELLE ASHA

RC CLUB KING 040R

SVS CHARDONNAY ARMS

SVS RAMONA RMK8

TRIPLE C SINGLETARY S3H

CCR MS 4045 TIME 7322T

MR NLC UPGRADE U8676

SVS SCARLETT SH2A

HC HUMMER 12M

RC MISS GRIFFEY 038N

BF K065 TALLADEGA

SVS JOKERS DARLIN MKD8

Adj. BW	Adj. WW	CE	BW	WW	YW	ADG	MCE	Milk	MWW
83	591	10.3	2.7	78.6	115.0	0.23	5.6	18.3	57.6
Stay	Doc	CW	YG	Marb	BF	REA	Shr	API	TI
18.8	13.6	24.4	-0.46	0.02	-0.105	0.81	-0.34	127.7	73.7
20	25	30	15						

EPDs % EPDs %

AI'd to MILL BAR HICKOK 7242 (ASA# 3219932) on 6/1/23. PE to SVS STAMPEDE JDUM (ASA# 3960961) from 6/20/23 to 10/1/23.

SVS DAYBREAK JAR8 is a flashy, black blaze-face daughter of our former herdsire, SVS HIGH FLYER FASB, who is now owned by Daniel Glen. He has 36 recorded progeny with the American Simmental Association. This SVS JOKERS DARLIN MKD8 cow family female has a sweet disposition and is moderate framed. She's a gorgeous chromed up female...which we absolutely love! She was Aled to MILL BAR HICKOK 7242 and pasture exposed to our exciting new herdsire, SVS STAMPEDE JDUM, a TJ GOLD 274G son out of a SVS IRISH CREAM UMB1 dam. This cow family has proven itself once again!

4

SVS LATIGO N LACE JFWB

PB SM

POLLED

BLACK

Tattoo

JFWB

ASA#

4074202

DOB

11/1/21

HOOK'S YELLOWSTONE 97Y

KOCH BIG TIMBER 685D

KOCH MS HOOKS BOY

CCR COWBOY CUT 5048Z

SVS SHENANDOAH SUNSHINE FWMB

SVS DELILAH WMBB

HOOKS TAURUS 24T

HOOKS SHEYENNE 77S

GW LUCKY BOY 252U

HOOK'S YORK 51Y

TRIPLE C SINGLETARY S3H

CCR MS 4045 TIME 7322T

CIRCLE S LEACHMAN 600U

SVS WHAT A DOLL MB10

Adj. BW	Adj. WW	CE	BW	WW	YW	ADG	MCE	Milk	MWW
79	628	12.3	-0.2	76.8	114.0	0.23	7.9	20.6	59.0
Stay	Doc	CW	YG	Marb	BF	REA	Shr	API	TI
17.9	12.4	27.0	-0.28	0.25	-0.061	0.63	-0.49	144.7	81.6
30	40	30	1	30	40				

EPDs % EPDs %

AI'd to TJ GOLD 274G (ASA# 3582577) on 6/1/23. PE to SVS STAMPEDE JDUM (ASA# 3960961) from 6/20/23 to 10/1/23.

SVS LATIGO N LACE JFWB is a black blaze-face, purebred daughter of KOCH BIG TIMBER 685D who has high marbling and a nice API and TI. Her dam is a CCR COWBOY CUT 5048Z out of a CIRCLE S LEACHMAN 600U x SVS WHAT A DOLL MB10 cow. You can't write a more maternal, long lasting pedigree. She's broody, moderate and complete. She was Aled to TJ GOLD 274G and pasture exposed to SVS STAMPEDE JDUM. Here's one to write home about!

5

SVS SPRINGTIME MELODY JGC2

PB SM

POLLED

BLACK

Tattoo

JGC2

ASA#

4074184

DOB

10/18/21

HOOK'S YELLOWSTONE 97Y

KOCH BIG TIMBER 685D

KOCH MS HOOKS BOY

SVS MAVERICK CXPZ

SVS WINIFRED GCN2

SVS RAINBOW DANCER CNL2

HOOKS TAURUS 24T

HOOKS SHEYENNE 77S

GW LUCKY BOY 252U

HOOK'S YORK 51Y

SVS BELL RINGER ANL3

SVS SONG BIRD XPZF

SVS SHARP SHOOTER XPL7

SVS NORLENE NLF2

Adj. BW	Adj. WW	CE	BW	WW	YW	ADG	MCE	Milk	MWW
82	657	10.6	0.7	79.0	114.0	0.22	6.4	25.5	64.9
Stay	Doc	CW	YG	Marb	BF	REA	Shr	API	TI
16.4	10.6	29.8	-0.33	0.06	-0.071	0.75	-0.41	128.1	77.3
45	45	45	15						

EPDs % EPDs %

AI'd to KBHR HOMELANDER J071 (ASA# 3943783) on 6/1/23. PE to SVS STAMPEDE JDUM (ASA# 3960961) from 6/20/23 to 10/1/23.

SVS SPRINGTIME MELODY JGC2 is a black, blaze-face, purebred daughter of KOCH BIG TIMBER 685D. This beautiful heifer possesses femininity with a long spine, tremendous depth of rib, and balanced EPDs. She sells Aled to KBHR HOMELANDER J071 and pasture exposed to SVS STAMPEDE JDUM. Here's a front pasture female for sure!



LOT 5

6

SVS FAIRY DUST JBN3

PB SM

POLLED

BLACK

Tattoo

JBN3

ASA#

3960948

DOB

9/13/21

CNS DREAM ON L186

WINCHESTER HR P8315

HS REFLECTIONS J34

ES BLACK ICE SK31

SVS FANDANGO BN33

SVS BLACK SNAP-CRACKLE-P

NICHOLS LEGACY G151

CNS SHEEZA DREAM K107W

BS MR ARAPAHOE 811A

HF/GFI RUBY RED 33E

ES DAKOTA NK68

ESK31

BF K030 RED SNAPPER

PVF-BF BH33 HH 101 BD12

Adj. BW	Adj. WW	CE	BW	WW	YW	ADG	MCE	Milk	MWW
72	558	15.2	0.8	61.2	88.2	0.17	7.5	27.7	58.2
Stay	Doc	CW	YG	Marb	BF	REA	Shr	API	TI
22.1	7.7	10.6	-0.52	-0.01	-0.116	0.73	-0.40	135.7	66.6
3	10	10	4						

EPDs % EPDs %

AI'd to HOOK'S EAGLE 6E (ASA# 3253742) on 6/1/23. PE to SVS STAMPEDE JDUM (ASA# 3960961) from 6/20/23 to 10/1/23.

SVS FAIRY DUST JBN3 is a black, purebred daughter of SVS FANDANGO BN33 who has 7 recorded progeny with the American Simmental Association. Here is a prime example of old school genetics at work providing mating flexibility. She's deep-bodied and has a touch of frame. She was Aled to HOOK'S EAGLE 6E who is now deceased and in limited supply, and pasture exposed to SVS STAMPEDE JDUM. This female has an exciting future ahead of her!



WINCHESTER HR P8315 - SIRE OF LOT 6

SPRING COW-CALF PAIRS



SVS EVERCLEAR FAR2 - SIRE OF LOT LOT 7A



SVS TIMBERLINE FB09 - SIRE OF LOT LOT 8A

7

svs SENSATION GCZM

PB SM
POLLED
HETERO
BLACK
Tattoo
GCZM
ASA#
3748812
DOB
9/29/19

SVS BELL RINGER ANL3

SVS MAVERICK CXPZ

SVS SONG BIRD XPZ

WS PRIME BEEF Z8

SVS RAVISHING RUBY CZTM

SVS FIREFLY ZTM8

MR NLC UPGRADE U8676

SVS NORRICE NLJ3

SVS HUMDINGER TR21

SVS PERFECTION PFZ2

WS BEEF KING W107

HSF MISS SKY 87U

SVS KEEP DREAMIN RNB1

SVS TWILIGHT TMK8

Adj. BW	Adj. WW	CE	BW	WW	YW	ADG	MCE	Milk	MWW	EPDs %
82		9.8	2.3	84.5	124.6	0.25	6.0	27.0	69.2	
				30	35		45	25	20	
Stay	Doc	CW	YG	Marb	BF	REA	Shr	API	TI	EPDs %
16.4	6.8	27.3	-0.49	-0.08	-0.088	1.07	-0.36	120.1	76.3	
45			15			15	45			

Safe to RCR WAYLON 287H, 3924360. PE 6-7-23 to 10-1 23.

Lot 7A: Heifer Calf / ASA#: 4225407 / DOB: 5/26/23 / Tattoo: LGCM

Adj. BW: 78# / Sired by SVS EVERCLEAR FAR2 (ASA#: 3546110).

SVS SENSATION GCZM combines breed great bulls MR NLC UPGRADE U8676, SVS HUMDINGER TR21, WS BEEF KING W107 and SVS KEEP DREAMIN RNB1. This is a super fancy pair. The dam is a black blaze-face, high capacity, high performance female with a nice udder. Her blaze-face heifer calf, SVS SPARKLES LGCM, is flashy! She's sired by our tremendous herdsire SVS EVERCLEAR FAR2 who has 95 recorded progeny with the American Simmental Association. This is a pair to own.

8

svs WILDWOOD FLOWER HAR2

PB SM
POLLED
BLACK
Tattoo
HAR2
ASA#
3793736
DOB
3/28/20

CCR COWBOY CUT 5048Z

WS PROCLAMATION E202

WS MISS SUGAR C4

SRS RIGHT-ON 22R

SVS SPELLBOUND ARK2

SVS ROSANNE RKC2

TRIPLE C SINGLETARY S3H

CCR MS 4045 TIME 7322T

CLRS GRADE-A 875 A

WS ANISE A71

SRS J914 PREFERRED BEEF

SRS G720 GILLIAN

BF K065 TALLADEGA

SVS KATHY

Adj. BW	Adj. WW	CE	BW	WW	YW	ADG	MCE	Milk	MWW	EPDs %
88	609	9.6	3.4	84.9	125.8	0.26	4.6	27.9	70.3	
				25	30	40		20	20	
Stay	Doc	CW	YG	Marb	BF	REA	Shr	API	TI	EPDs %
17.2	13.5	30.9	-0.32	0.26	-0.082	0.65	-0.36	137.8	83.1	
40	30	40		30			45	40	35	

Safe to RCR WAYLON 287H, 3924360. PE 6-7-23 to 10-1 23.

Lot 8A: Bull Calf / ASA#: 4275972 / DOB: 5/22/23 / Tattoo: LHA2

Adj. BW: 85# / Sired by SVS TIMBERLINE FB09 (ASA#: 3578613).

SVS WILDWOOD FLOWER HAR2 is a black purebred daughter of WS PROCLAMATION E202, the leading herdsire and AI stud for APEX Cattle Co. She is a big spread female, moderate in frame with high volume. Check out her first calf who sells as a yearling bull, SVS EXPLOSION KHA2. She's a producer of the right kind! Her fancy black bull calf at side sired by our proven herd sire, SVS TIMBERLINE FB09, is a looker too!



Bid Online!

WWW.DVAUCTION.COM/EVENTS/197113

FALL BRED HEIFERS

9

SVS HOT PANTS JBZT

PB SM

POLLED

RED

Tattoo

JBZT

ASA#

4074203

DOB

10/4/21

TJ SHARPER IMAGE 809U

SVS BADLANDS BSNL

SVS SUGAR-N-SPICE SNL2

WS BEEF MAKER R13

SVS TEA BERRY BZT8

SVS FIREFLY ZTM8

DIKEMANS SURE BET

T J MISS BANDO S27

SS GOLDMINE L42

SVS NORLENE NLF2

HOOKS SHEAR FORCE 38K

DCR MS RIBEYE N72

SVS KEEP DREAMIN RNB1

SVS TWILIGHT TMK8

Adj. BW	Adj. WW	CE	BW	WW	YW	ADG	MCE	Milk	MWW	EPDs
81	734	8.0	2.8	78.5	116.0	0.23	4.2	26.6	65.8	%
								25	35	%
Stay	Doc	CW	YG	Marb	BF	REA	Shr	API	TI	EPDs
17.9	13.0	29.4	-0.37	0.10	-0.071	0.87	-0.34	126.7	75.6	%
30	35									%

AI'd to FFS JNR HARD KNOX H034 (ASA# 3794725) on 12/21/22. PE to SVS STAMPEDE JDUM (ASA# 3960961) from 1/11/23 to 4/12/23.

SVS HOT PANTS JBZT is a red purebred female. She has the great female makers TJ SHARPER IMAGE 809U, SS GOLDMINE L42, HOOKS SHEAR FORCE 38K and SVS KEEP DREAMIN RNB1 in her pedigree. She's deep, moderate, and definitely donor quality. Here's a gorgeous female from the SVS JOKERS DARLIN MKD8 cow family who consistently produces keepers. She's a real headliner!



10

SVS BOUNTIFUL HARVEST JDS7

1/2 SM

1/2 AN

POLLED

BLACK

Tattoo

JDS7

ASA#

3960929

DOB

9/21/21

S A V BISMARCK 5682

S A V BRUISER 9164

S A V MISS BOBBIE 7463

SVS SHENANDOAH ZWNA

SVS LAURALEE DSP7

SVS SWEETIE SPL7

G A R GRID MAKER

S A V ABIGALE 0451

S A V 004 PREDOMINANT 4438

S A V MISS BOBBIE 4177

ELLINGSON LEGACY M229

SVS LADY BUG WNBA

SRS J914 PREFERRED BEEF

SVS PANSY PLF7

Adj. BW	Adj. WW	CE	BW	WW	YW	ADG	MCE	Milk	MWW	EPDs
73	619	13.6	-0.3	73.0	116.9	0.27	8.9	21.2	57.6	%
		35	40					20		%
Stay	Doc	CW	YG	Marb	BF	REA	Shr	API	TI	EPDs
12.3	10.9	33.3	-0.22	0.16	-0.045	0.64	-0.28	119.1	73.2	%
		45								%

AI'd to TJ GOLD 274G (ASA# 3582577) on 12/21/22. PE to SVS STAMPEDE JDUM (ASA# 3960961) from 1/11/23 to 4/12/23.

SVS BOUNTIFUL HARVEST JDS7 is sired by S A V BRUISER 9164 who makes wonderful SimAngus progeny with our cows. Her dam has SVS SHENANDOAH ZWNA, SRS J914 PREFERRED BEEF and goes back to our SVS PANSY PLF7 donor. She's a maternal sib to SVS MOMENTUM KDS7, who also sells. See the phenotypic similarity? She's the real deal, with balanced EPDs and a broody, smooth, deep-bodied, attractive package.



11

SVS BIRDS R SINGIN' JAXZ

PB SM

POLLED

BLACK

Tattoo

JAXZ

ASA#

3960960

DOB

10/4/21

HOOK'S BEACON 56B

KBHR HIGH ROAD E283

WS MISS SUGAR C4

SVS SHARP SHOOTER XPL7

SVS DAISY DUKE AXPZ

SVS SONG BIRD XPZF

HOOKS SHEAR FORCE 38K

HOOKS ZAFIRAH 41Z

CLRS GRADE-A 875 A

WS ANISE A71

SVS KEEP DREAMIN RNB1

SVS PANSY PLF7

SVS HUMDINGER TR21

SVS PERFECTION PFZ2

Adj. BW	Adj. WW	CE	BW	WW	YW	ADG	MCE	Milk	MWW	EPDs
76	728	12.2	0.9	85.5	124.0	0.24	7.3	27.2	69.9	%
		35	40	25	35		25	25	20	%
Stay	Doc	CW	YG	Marb	BF	REA	Shr	API	TI	EPDs
18.0	14.3	33.1	-0.44	0.09	-0.081	1.06	-0.34	138.1	82.9	%
30	20	35	40			15		40	35	%

AI'd to KBHR BOLD RULER H152 (ASA# 3789539) on 12/21/22. PE to SVS STAMPEDE JDUM (ASA# 3960961) from 1/11/23 to 4/12/23.

SVS BIRDS R SINGIN' JAXZ is a fine example of SVS HUMDINGER TR21 genetics. This black, blaze-face heifer is long-spined and ultra feminine. She is sired by KBHR HIGH ROAD E283, who, as you can see, makes great bulls too. He has been a go to purebred bull for calving ease and marbling. With impressive EPDs and phenotype, she's definitely a front pasture female.

12

SVS LADY TRUE JCSL

PB SM

HOMO

POLLED

BLACK

Tattoo

JCSL

ASA#

4074213

DOB

10/6/21

WS PROCLAMATION E202

LBRS GENESIS G69

LBR DIANA D69

MR NLC UPGRADE U8676

SVS MOONBEAM CSNL

SVS SUGAR-N-SPICE SNL2

CCR COWBOY CUT 5048Z

WS MISS SUGAR C4

HOOK'S XAVIER 14X

LBR DOUBLE TAKE X14

ELLINGSON LEGACY M229

MS NLC MOJO S6119 B

SS GOLDMINE L42

SVS NORLENE NLF2

Adj. BW	Adj. WW	CE	BW	WW	YW	ADG	MCE	Milk	MWW	EPDs
82	706	8.1	3.1	98.9	146.7	0.30	3.2	24.0	73.5	%
				3	10		20	45	10	%
Stay	Doc	CW	YG	Marb	BF	REA	Shr	API	TI	EPDs
15.6	14.1	50.8	-0.37	0.47	-0.079	1.09	-0.34	150.4	96.6	%
		20	3	10		15		20	5	%

AI'd to MILL BAR HICKOK 7242 (ASA# 3219932) on 12/21/22. PE to SVS STAMPEDE JDUM (ASA# 3960961) from 1/11/23 to 4/12/23.

SVS LADY TRUE JCSL is a true sale feature. This black Homozygous Polled LBRS GENESIS G69 daughter goes back to MR NLC UPGRADE U8676 and her dam, SVS SUGAR-N-SPICE SNL2. She is royally bred and is in the top 3% WW and top 5% YW. She's long and clean-made, and is a true breeding piece. I always put good breeder females in the sale and she is top notch!

FALL COW-CALF PAIRS



SVS VIRGINIA BELLE ASHA - DAM OF LOT 13

13

SVS REMEMBER WHEN JASH

PB SM
POLLED
BLACK
Tattoo
JASH
ASA#
3913164
DOB
3/8/21

REMINGTON LOCK N LOAD54U
STF ROYAL AFFAIR Z44M
STF ONYX 451W
MR NLC UPGRADE U8676
SVS VIRGINIA BELLE ASHA
SVS SCARLETT SH2A

REMINGTON ON TARGET 2S
BAR15 MISS KNIGHT78E-51G
STF DOMINANCE T171
GCF MISS CALIENTE
ELLINGSON LEGACY M229
MS NLC MOJO S6119 B
PVF-BF BF26 BLACK JOKER
SVS BLACK VANESSA

Adj. BW	Adj. WW	CE	BW	WW	YW	ADG	MCE	Milk	MWW	EPDs %
77	643	10.3	2.0	71.0	107.6	0.23	4.1	23.0	58.4	
Stay	Doc	CW	YG	Marb	BF	REA	Shr	API	TI	EPDs %
12.5	11.9	28.2	-0.55	-0.15	-0.117	1.04	-0.28	105.1	66.8	
			4		4	20				

Lot 13A: Bull Calf / ASA#: 4276037 / DOB: 10/18/23 / Tattoo: LJAH

Adj. BW: 82# / Sired by TJ GOLD 274G (ASA#: 3582577).

SVS REMEMBER WHEN JASH is a purebred embryo out of our ultra-feminine donor SVS VIRGINIA BELLE ASHA. With a different pedigree, she possesses eye appeal in a moderate frame, is deep-sided, has small teats and is a milking machine. She's quiet as a kitten too. She sells with a herd sire prospect out of TJ GOLD 274G.

14

SVS HEART O GOLD JAU7

3/4 SM
1/4 AN
POLLED
BLACK
Tattoo
JAU7
ASA#
3960983
DOB
10/5/21

DIKEMANS SURE BET
TJ SHARPER IMAGE 809U
T J MISS BANDO S27
ELLINGSON LEGACY M229
SVS CALAMITY JANE AUS7
SVS LULLABY USP7

TJ 57J THE GAMBLER
MEGAN 9M
L T 598 BANDO 9074
T J MISS ULTRAVOX P12
NICHOLS LEGACY G151
ELLINGSON MS PSTOCK K58
SVS KEEP DREAMIN RNB1
SVS SWEETIE SPL7

Adj. BW	Adj. WW	CE	BW	WW	YW	ADG	MCE	Milk	MWW	EPDs %
82	768	8.8	2.3	88.4	134.7	0.29	5.3	22.2	66.4	
				15	20	35			25	
Stay	Doc	CW	YG	Marb	BF	REA	Shr	API	TI	EPDs %
16.7	15.0	45.7	-0.28	0.07	-0.070	0.81	-0.40	117.6	76.5	
35	20	15	40		25	30	20			

Lot 14A: Heifer Calf / ASA#: 4276038 / DOB: 9/25/23 / Tattoo: LJA7

Adj. BW: 77# / Sired by TJ GOLD 274G (ASA#: 3582577).

SVS HEART O GOLD JAU7 is a 3/4 SM 1/4 AN daughter of TJ SHARPER IMAGE 809U who makes great producing females. Backed by SVS PANSY PLF7 and SVS BLACK RUBY LB7B genetics on the dams side, this deep, pretty-uddered female is getting the job done in style. She has an excellent disposition and should be staying here. She sells with a black heifer calf sired by TJ GOLD 274G. This calf should be a keeper too!

15

SVS DUSKY MOON JCSD

PB SM
POLLED
BLACK
Tattoo
JCSD
ASA#
4074185
DOB
9/29/21

HOOK'S YELLOWSTONE 97Y
KOCH BIG TIMBER 685D
KOCH MS HOOKS BOY
SVS RELOAD WPF7
SVS MISTY DAWN CSND
SVS SWEET PEA SNBD

HOOKS TAURUS 24T
HOOKS SHEYENNE 77S
GW LUCKY BOY 252U
HOOK'S YORK 51Y
SRS RIGHT-ON 22R
SVS RUBY BLACK PF7A
BF K065 TALLADEGA
SVS DOLL POWER NB1D

Adj. BW	Adj. WW	CE	BW	WW	YW	ADG	MCE	Milk	MWW	EPDs %
85	810	10.7	0.8	87.6	127.0	0.25	5.6	25.7	69.4	
			40	20	30			35	20	
Stay	Doc	CW	YG	Marb	BF	REA	Shr	API	TI	EPDs %
16.3	12.3	33.5	-0.31	0.14	-0.074	0.71	-0.40	135.7	84.4	
45	35						20	45	30	

Lot 15A: Heifer Calf / ASA#: 4276034 / DOB: 9/30/23 / Tattoo: LJCD

Adj. BW: 75# / Sired by KBHR HOMELANDER J071 (ASA#: 3943783).

SVS DUSKY MOON JCSD is a black, feminine, high growth KOCH BIG TIMBER 685D daughter who stems from our DOLL cow family. Check out her maternal sib, SVS TURBO CHARGED KCSD, who also sells. Her daughter, SVS SWEET STUFF LJCD, is our first calf from KBHR HOMELANDER J071 who was the high selling SimAngus bull at Keller's sale. His semen is currently off the market. Check out this calf's API of 162.7 and TI of 98.6. What genetic potential here!



THE BOSSES...MOM AND SISSY!

FALL COW-CALF PAIRS

16

SVS ROCKIN' ROBIN JDTN

1/2 SM
1/2 AN
POLLED
BLACK
Tattoo
JDTN
ASA#
3960927
DOB
10/1/21

BASIN FRANCHISE P142
EF COMPLIMENT 8088
EF EVERELDA ENTENSE 6117
SVS SHARP SHOOTER XPL7
SVS DRAGONFLY DTN7
SVS THERESA TNF7

C A FUTURE DIRECTION 5321
BASIN CHLOE 812L
BR MIDLAND
H F EVERELDA ENTENSE 869
SVS KEEP DREAMIN RNB1
SVS PANSY PLF7
KENCO/MF POWERLINE 204L
SVS NATASHIA NFW7

Adj. BW	Adj. WW	CE	BW	WW	YW	ADG	MCE	Milk	MWW	EPDs %
71	619	13.2	-0.5	70.7	110.6	0.25	9.6	26.0	61.2	
		40	40				15	25		
Stay	Doc	CW	YG	Marb	BF	REA	Shr	API	TI	EPDs %
16.9	13.7	35.8	-0.09	0.21	-0.011	0.54	-0.35	128.9	73.0	
30	35	40								

Lot 16A: Heifer Calf / ASA#: 4276035 / DOB: 9/22/23 / Tattoo: LJDN

Adj. BW: 79# / Sired by MILL BAR HICKOK 7242 (ASA#: 3219932).

SVS ROCKIN' ROBIN JDTN is a black 1/2 SM 1/2 AN EF COMPLIMENT 8088 daughter. This calving ease heifer is feminine, long-spined and has a beautiful udder. She's doing a super job with her nice 1/4 blood heifer calf sired by MILL BAR HICKOK 7242. Gotta love these SimAngus females!



EF COMPLIMENT 8088 - SIRE OF LOT 16

17

SVS BUMBLE BEE JGAH

PB SM
POLLED
BLACK
Tattoo
JGAH
ASA#
3913188
DOB
6/3/21

KOCH BIG TIMBER 685D
SVS TIMBERLINE FB09
SVS DO-SI-DO BS09
CCR COWBOY CUT 5048Z
SVS MADEMOSIELLE GAHA
SVS VIRGINIA BELLE ASHA

HOOK'S YELLOWSTONE 97Y
KOCH MS HOOKS BOY
MR NLC UPGRADE U8676
SVS SANDY S019
TRIPLE C SINGLETARY S3H
CCR MS 4045 TIME 7322T
MR NLC UPGRADE U8676
SVS SCARLETT SH2A

Adj. BW	Adj. WW	CE	BW	WW	YW	ADG	MCE	Milk	MWW	EPDs %
78	815	11.5	1.0	90.7	132.6	0.26	6.9	25.1	70.4	
		45	45	15	20	40	30	40	20	
Stay	Doc	CW	YG	Marb	BF	REA	Shr	API	TI	EPDs %
16.9	13.1	33.5	-0.41	0.17	-0.088	0.92	-0.38	141.5	87.6	
40	35	35		45		40	30	35	20	

Lot 17A: Heifer Calf / ASA#: 4276036 / DOB: 9/25/23 / Tattoo: LJGH

Adj. BW: 80# / Sired by TJ GOLD 274G (ASA#: 3582577).

SVS BUMBLE BEE JGAH is a black purebred daughter of SVS TIMBERLINE FB09. Her dam is a daughter of CCR COWBOY CUT 5048Z and our fancy donor SVS VIRGINIA BELLE ASHA, co-owned with Sandy Acres Simmentals in Nebraska. This is a feminine, clean-lined heifer with a TJ GOLD 274G heifer baby at side. TJ GOLD 274G has been popular and his semen was hard to get. You should take the opportunity to buy this pair. They will make you money.

I live about 30 minutes from Lisa and Shenandoah Valley Simmentals. I take the opportunity three to four times a year to walk through the cattle and see what's evolving in Lisa's breeding program. Over the years I have purchased many females and bulls. The bulls have been for myself as well as producers I purchased for in the Midwest. The females have been super productive. The heifers out of these cows are eye-appealing keepers that carry the productivity of their mothers. The cattle are calm, easy to work with and productive.

- Bob Threewitts, Twin Oaks Farm
Keezletown, VA

18

SVS HIGH COTTON JBZX

PB SM
POLLED
BLACK
Tattoo
JBZX
ASA#
3913200
DOB
4/24/21

MR NLC UPGRADE U8676
SVS PATRIOT CXT7
SVS MOLASSES XTP7
SVS VICTORY ZL7E
SVS GOOD TIMES BZX8
SVS SUNRISE ZXT8

ELLINGSON LEGACY M229
MS NLC MOJO S6119 B
SVS HUMDINGER TR21
SVS TINA TP87
SRS RIGHT-ON 22R
SVS BLACK RUBY LB7B
SVS SHARP SHOOTER XPL7
SVS SUNNY DAY XTM8

Adj. BW	Adj. WW	CE	BW	WW	YW	ADG	MCE	Milk	MWW	EPDs %
76	580	10.7	3.1	77.9	114.7	0.23	2.7	30.2	69.1	
								10	20	
Stay	Doc	CW	YG	Marb	BF	REA	Shr	API	TI	EPDs %
16.2	13.2	33.1	-0.58	0.03	-0.121	1.15	-0.29	123.3	74.9	
30	35	2		2		10				

Lot 18A: Bull Calf / ASA#: Pending / DOB: 11/13/23 / Tattoo: LJBX

Act. BW: 74# / Sired by SVS STAMPEDE JDUM (ASA#: 3960961).

SVS HIGH COTTON JBZX is sired by SVS PATRIOT CXT7, a SVS HUMDINGER TR21 grandson, and has SVS RUBY RED and SVS PANSY PLF7 high maternal genetics on the dam's side. With performance and maternal ability, this long-made, clean-lined, feminine female with a beautiful udder is just the kind we like. She's doing a great job raising her first calf sired by SVS STAMPEDE JDUM, an exciting TJ GOLD 274 G son out of the SVS WHAT A DOLL MB10 cow family. Be the first to own his progeny!



SVS PATRIOT CXT7 - SIRE OF LOT 18

AGE-ADVANTAGE HEIFERS



FFS JNR HARD KNOX H034 - SIRE

19

svs BUTTERNUT KCZM

PB SM

POLLED

RED

Tattoo

KCZM

ASA#

4074279

DOB

5/26/22

W/C FORT KNOX 609F

FFS JNR HARD KNOX H034

HILB MISS VERSACE E57C

WS PRIME BEEF Z8

SVS RAVISHING RUBY CZTM

SVS

FIREFLY ZTM8

W/C BANKROLL 811D

K-LER DOLLY'S QUEEN 609D

W/C EXECUTIVE ORDER 8543B

AJE MS CHANEL Y32

WS BEEF KING W107

HSF MISS SKY 87U

SVS KEEP DREAMIN RNB1

SVS TWILIGHT TMK8

Adj. BW	Adj. WW	CE	BW	WW	YW	ADG	MCE	Milk	MWW	EPDs %
72	549	12.2	0.0	82.5	123.8	0.26	6.5	24.6	65.8	
		35	25	35	35	40	40	40	35	
Stay	Doc	CW	YG	Marb	BF	REA	Shr	API	TI	EPDs %
15.2	8.8	21.4	-0.41	0.16	-0.054	1.01	-0.30	137.6	83.8	
						25		40	30	

Sells open, ready to breed.

SVS BUTTERNUT KCZM is a red blaze-face, purebred daughter of the high selling FFS JNR HARD KNOX H034. His calves have been fancy favorites across the country. She has the genetics of WS BEEF KING W107, ER BIG SKY 545B, PVF-BF BG10 DOLL BE22 and HC POWER DRIVE 88H. All of these have made a great impact on Simmental herds across the country. She's a fancy little lady with a bit of chrome, goggle eyes, a clean neck and high volume. Clubby guys take note too. She's got pizzazz and is a real standout!!!

20

svs MANY BLESSINGS KZ09

PB SM

POLLED

BLACK

Tattoo

KZ09

ASA#

4074311

DOB

5/13/22

HOOK'S YELLOWSTONE 97Y

SVS BUSTIN' LOOSE EYR7

SVS SHINING STAR YRL7

KAPPES TRAILBLAZER S516

SVS COW BELLE ZS09

SVS SANDY S019

HOOKS TAURUS 24T

HOOKS SHEYENNE 77S

SRS RIGHT-ON 22R

SVS ROSEBUD RLB7

CNS DREAM ON L186

KAPPES SADIE M166

BLACK IRISH KANSAS

COTT KELBY 019K

Adj. BW	Adj. WW	CE	BW	WW	YW	ADG	MCE	Milk	MWW	EPDs %
79		10.5	1.3	84.5	125.5	0.26	6.6	26.0	68.2	
		30	35	40	30	35	30	25		
Stay	Doc	CW	YG	Marb	BF	REA	Shr	API	TI	EPDs %
16.7	7.4	34.8	-0.42	-0.08	-0.107	0.80	-0.34	123.1	77.1	
45		30		15						

Sells open, ready to breed.

SVS MANY BLESSINGS KZ09 is a black, purebred daughter of SVS BUSTIN' LOOSE EYR7 and is a maternal granddaughter of our proven SVS SANDY S019 donor. This female has the unique combination of high growth and power with added milk. She displays stretch and a bit of frame and is a brood cow special. She is one of the best females in the offering and who can't use a few more blessings?

21

svs ANGEL WINGS KZUL

PB SM

POLLED

BLACK

Tattoo

KZUL

ASA#

4074275

DOB

3/20/22

GW-WBF SUBSTANCE 820Y

GIBBS 3009A ELEMENT

GIBBS 9128W MABELLE N341

SVS KEEP DREAMIN RNB1

SVS MAGNOLIA ZURL

SVS NEW DAY URL2

GW PREMIUM BEEF 021TS

GW MISS MATERNAL 558P

RCR STETSON T17

BF N341 BSD MABELLE BG32

CNS DREAM ON L186

SVS DOLLS JOKER NB10

PVF-BF BF26 BLACK JOKER

SVS ROXANNE RLG2

Adj. BW	Adj. WW	CE	BW	WW	YW	ADG	MCE	Milk	MWW	EPDs %
83	508	7.5	3.1	78.0	120.1	0.26	6.4	25.9	64.9	
		45	40	40	40	40	40	30	40	
Stay	Doc	CW	YG	Marb	BF	REA	Shr	API	TI	EPDs %
15.7	12.2	32.4	-0.49	0.09	-0.107	0.98	-0.47	122.4	75.6	
45		35	15		15	30	2			

Sells open, ready to breed.

SVS ANGEL WINGS KZUL is a black purebred daughter of GIBBS 3009A ELEMENT. She is a power female with high performance. She's long-sided, deep and clean-lined. Maternally she is backed by SVS KEEP DREAMIN RNB1 and PVF-BF BF26 BLACK JOKER both of which make great cows. Mate her many ways to create something special!

22

svs RAINDROP KBYC

PB SM

POLLED

BLACK

Tattoo

KBYC

ASA#

4074321

DOB

3/22/22

CCR COWBOY CUT 5048Z

TJ HIGH PLAINS 986E

TJ MS 38W

SVS SHARP SHOOTER XPL7

SVS REBA BYNC

SVS EVERGREEN YNBC

TRIPLE C SINGLETARY S3H

CCR MS 4045 TIME 7322T

DIKEMANS SURE BET

TJ 12L

SVS KEEP DREAMIN RNB1

SVS PANSY PLF7

SVS SNAP SHOT UN33

SVS DOLLS POWER HOUSE N

Adj. BW	Adj. WW	CE	BW	WW	YW	ADG	MCE	Milk	MWW	EPDs %
76	622	12.9	1.0	84.2	127.5	0.27	9.3	30.9	72.9	
		30	45	30	30	35	10	10	10	
Stay	Doc	CW	YG	Marb	BF	REA	Shr	API	TI	EPDs %
18.0	13.8	30.9	-0.37	-0.01	-0.075	0.84	-0.41	133.5	79.9	
30	25	40					15		45	

Sells open, ready to breed.

SVS RAINDROP KBYC is a black blaze-face, purebred daughter of TJ HIGH PLAINS 986E. With SVS PANSY PLF7 and PVF-BF BG10 DOLL BE22 cow families in her pedigree she's bound to become a super female. She's a high performance, high maternal heifer with length and a hint of frame. These genetics have been in our herd for many years. Time-tested genetics like these are hard to find.

23

svs ALL SMILES KEBZ

PB SM

POLLED

BLACK

Tattoo

KEBZ

ASA#

4074332

DOB

3/19/22

HOOK'S YELLOWSTONE 97Y

KOCH BIG TIMBER 685D

KOCH MS HOOKS BOY

SVS PATRIOT CXT7

SVS RISE ABOVE EBZJ

SVS BRIGITTE BZUJ

HOOKS TAURUS 24T

HOOKS SHEYENNE 77S

GW LUCKY BOY 252U

HOOK'S YORK 51Y

MR NLC UPGRADE U8676

SVS MOLASSES XTP7

SVS VICTORY ZL7E

SVS HARMONY ZU1J

Adj. BW	Adj. WW	CE	BW	WW	YW	ADG	MCE	Milk	MWW	EPDs %
77	490	12.6	0.0	71.2	105.6	0.22	6.6	26.0	61.6	
		30	25				35	30		
Stay	Doc	CW	YG	Marb	BF	REA	Shr	API	TI	EPDs %
16.9	11.6	26.0	-0.36	0.18	-0.079	0.72	-0.38	137.2	77.2	
40				45			30	40		

Sells open, ready to breed.

SVS ALL SMILES KEBZ is a black, blaze-face, purebred daughter of KOCH BIG TIMBER 685D out of a stout SVS PATRIOT CXT7 daughter from the SCC LETS TANGO 124J cow family. She is a high milk, high maternal female with clean lines and a very docile disposition. This pretty lady is bred to do it right!

AGE-ADVANTAGE HEIFERS

24

SVS GRACIE KFS8

PB SM

POLLED

HETERO

BLACK

Tattoo

KFS8

ASA#

4074336

DOB

4/9/22

WS ALL-AROUND Z35
SVS EVERCLEAR FAR2
 SVS SPELLBOUND ARK2
 SVS SUNDANCE CWSA
SVS WILD CHERRY FSP8
 SVS SALLY MAE SP8H

WS BEEF KING W107
 CDI MS HIGH ROLLER 39W
 SRS RIGHT-ON 22R
 SVS ROSANNE RKC2
 WS PRIME BEEF Z8
 SVS BROWN SUGAR WS8A
 SVS JOKERS GOLD PM10
 SVS PATTY P87H

Adj. BW	Adj. WW	CE	BW	WW	YW	ADG	MCE	Milk	MWW	EPDs %
86	646	10.3	2.8	85.2	121.3	0.23	5.6	27.3	69.8	
				25	40			20	20	
Stay	Doc	CW	YG	Marb	BF	REA	Shr	API	TI	EPDs %
15.1	10.3	29.9	-0.41	0.04	-0.090	0.85	-0.27	123.0	78.6	
		45								

Sells open, ready to breed.

SVS GRACIE KFS8 is a black, purebred heifer sired by SVS EVERCLEAR FAR2. Her dam is a super daughter of our powerful red herdsire, SVS SUNDANCE CWSA. SUNDANCE is out of our donor SVS BROWN SUGAR WS8A who has 14 recorded progeny, and BROWN SUGAR's maternal granddam, COTT RED SILK 887H, has 36 recorded progeny. These tremendous cow families keep going and going. This female is long, deep, and has high volume with balanced EPDs. See what she'll do in your program.



25

SVS JULIANNA KEAH

PB SM

POLLED

BLACK

Tattoo

KEAH

ASA#

4074322

DOB

4/13/22

HOOK'S YELLOWSTONE 97Y
SVS BUSTIN' LOOSE EYR7
 SVS SHINING STAR YRL7
 CCR COWBOY CUT 5048Z
SVS SMOKIN' HOT EAHA
 SVS VIRGINIA BELLE ASHA

HOOKS TAURUS 24T
 HOOKS SHEYENNE 77S
 SRS RIGHT-ON 22R
 SVS ROSEBUD RLB7
 TRIPLE C SINGLETARY S3H
 CCR MS 4045 TIME 7322T
 MR NLC UPGRADE U8676
 SVS SCARLETT SH2A

Adj. BW	Adj. WW	CE	BW	WW	YW	ADG	MCE	Milk	MWW	EPDs %
73	579	13.1	0.4	86.8	128.2	0.26	7.4	27.0	70.4	
		25	30	20	30	40	25	25	20	
Stay	Doc	CW	YG	Marb	BF	REA	Shr	API	TI	EPDs %
17.2	15.2	36.8	-0.45	0.14	-0.099	0.97	-0.40	142.3	85.7	
40	15	25	35		30	30	20	30	25	

Sells open, ready to breed.

SVS JULIANNA KEAH is a black, purebred daughter of SVS BUSTIN' LOOSE EYR7, who comes from the SVS ROSEBUD RLB7 and SVS BLACK RUBY LB7B cow families. Her dam is out of one of our most predictable and best crosses of CCR COWBOY CUT 5048Z and SVS VIRGINIA BELLE ASHA. This heifer has 14 EPDs and indexes in the top 30% of the breed. She's long and feminine and offers many mating possibilities!



26

SVS ANGIE KA33

PB SM

POLLED

HETERO

BLACK

Tattoo

KA33

ASA#

4074264

DOB

4/17/22

KOCH BIG TIMBER 685D
SVS TIMBERLINE FB09
 SVS DO-SI-DO BS09
 SVS GOLD FINGER SLF2
SVS WILDFIRE AN33
 SVS BLACK SNAP-CRACKLE-P

HOOK'S YELLOWSTONE 97Y
 KOCH MS HOOKS BOY
 MR NLC UPGRADE U8676
 SVS SANDY S019
 SS GOLDMINE L42
 SVS LUCINDA
 BF K030 RED SNAPPER
 PVF-BF BH33 HH 101 BD12

Adj. BW	Adj. WW	CE	BW	WW	YW	ADG	MCE	Milk	MWW	EPDs %
77	596	10.7	1.2	80.0	114.4	0.21	6.2	24.9	64.9	
				45			45	40	40	
Stay	Doc	CW	YG	Marb	BF	REA	Shr	API	TI	EPDs %
18.0	11.6	26.5	-0.42	0.06	-0.099	0.75	-0.34	131.2	77.7	
30					30					

Sells open, ready to breed.

SVS ANGIE KA33 is a black purebred daughter of SVS TIMBERLINE FB09, our KOCH BIG TIMBER 685D son, who is back by SVS GOLD FINGER SLF2 and BF K030 RED SNAPPER genetics. She is a high stay female with long-time, hard-working genetics. This broody, long-strided, quiet natured heifer is put together right. Wouldn't you like a pasture full like her?

27

SVS DIXIE CLASSIC KAW9

PB SM

POLLED

BLACK

Tattoo

KAW9

ASA#

4074303

DOB

4/24/22

CCR COWBOY CUT 5048Z
SVS HIGH FLYER FASB
 SVS VIRGINIA BELLE ASHA
 SVS GOLD FINGER SLF2
SVS AMAZING GRACE AW09
 SVS MISS FRISKY WS09

TRIPLE C SINGLETARY S3H
 CCR MS 4045 TIME 7322T
 MR NLC UPGRADE U8676
 SVS SCARLETT SH2A
 SS GOLDMINE L42
 SVS LUCINDA
 SVS SLEDGE HAMMER TM10
 SVS SANDY S019

Adj. BW	Adj. WW	CE	BW	WW	YW	ADG	MCE	Milk	MWW	EPDs %
76	605	11.1	1.5	81.4	117.3	0.22	7.2	23.5	64.2	
				40			25	40	45	
Stay	Doc	CW	YG	Marb	BF	REA	Shr	API	TI	EPDs %
17.7	11.8	26.3	-0.51	0.00	-0.115	0.90	-0.35	128.9	77.2	
30			10		4	45				

Sells open, ready to breed.

SVS DIXIE CLASSIC KAW9 is a black, blaze-face purebred daughter of SVS HIGH FLYER FASB. Her dam is out of the phenomenal female-maker SVS GOLD FINGER SLF2 and our outstanding SVS SANDY S019 and COTT KELBY 019K cow family. This pretty female has a laid back attitude and balanced EPDs across the board. Don't miss this opportunity to put these time-tested and Lisa-approved genetics in your herd!

AGE-ADVANTAGE HEIFERS



BO BO...THE BEST COW DOG EVER!

28

SVS CHARITY KGHA

PB SM

POLLED

BLACK

Tattoo

KGHA

ASA#

4074330

DOB

5/1/22

LRS ELEVATE 213B

SVS COMMON SENSE GASH

SVS VIRGINIA BELLE ASHA

CCR COWBOY CUT 5048Z

SVS MADEMOSIELLE GAHA

SVS VIRGINIA BELLE ASHA

HOOK'S YELLOWSTONE 97Y

LRS MS DUAL FOCUS 213Z

MR NLC UPGRADE U8676

SVS SCARLETT SH2A

TRIPLE C SINGLETARY S3H

CCR MS 4045 TIME 7322T

MR NLC UPGRADE U8676

SVS SCARLETT SH2A

Adj. BW	Adj. WW	CE	BW	WW	YW	ADG	MCE	Milk	MWW	EPDs %
70	579	13.5	-0.2	80.8	121.8	0.26	7.9	27.6	67.9	
		20	25	40	40	40	20	20	25	
Stay	Doc	CW	YG	Marb	BF	REA	Shr	API	TI	EPDs %
15.6	11.0	31.2	-0.51	0.12	-0.100	1.09	-0.35	138.1	83.0	
		40	10		30	15		40	35	

Sells open, ready to breed.

SVS CHARITY KGHA is a black, purebred daughter of SVS COMMON SENSE GASH. Her dam is out of one of our magical crosses of CCR COWBOY CUT 5048Z and SVS VIRGINIA BELLE ASHA. She is maternally bred as she is high calving ease, low birth weight, and high in all her maternal traits. This moderate, high volume female will make a great cow.

29

SVS MELODY KC8H

PB SM

POLLED

BLACK

Tattoo

KC8H

ASA#

4074283

DOB

5/5/22

KOCH BIG TIMBER 685D

SVS TIMBERLINE FB09

SVS DO-SI-DO BS09

MR NLC UPGRADE U8676

SVS WHISPER C87H

COTT RED SILK 887H

HOOK'S YELLOWSTONE 97Y

KOCH MS HOOKS BOY

MR NLC UPGRADE U8676

SVS SANDY S019

ELLINGSON LEGACY M229

MS NLC MOJO S6119 B

BBS ZIMA D55

NICHOLS BEAT 85U

Adj. BW	Adj. WW	CE	BW	WW	YW	ADG	MCE	Milk	MWW	EPDs %
81	540	9.5	2.0	81.8	117.6	0.22	4.0	22.6	63.4	
				40						
Stay	Doc	CW	YG	Marb	BF	REA	Shr	API	TI	EPDs %
14.6	11.3	25.3	-0.47	0.09	-0.106	0.86	-0.27	124.4	78.5	
			25		15					

Sells open, ready to breed.

SVS MELODY KC8H is a black, purebred daughter of SVS TIMBERLINE FB09 and a cow who is a direct daughter of MR NLC UPGRADE U8676 and our amazing donor COTT RED SILK 887H. She traces back to the famous Nichols cow NICHOLS BEAT 85U. Dave would be proud to see his genetics continue to flourish across the country. This moderate frame, high volume female, who is puppy dog gentle, is just the kind we like...and you should too!



COTT RED SILK 887H - MATERNAL GRANDDAM OF LOT 29

30

COMMERCIAL HEIFER

Tattoo

ASA#

COMM.

DOB

3/4/23

Act. BW	Adj. WW	CE	BW	WW	YW	ADG	MCE	Milk	MWW	EPDs %
67										
Stay	Doc	CW	YG	Marb	BF	REA	Shr	API	TI	EPDs %

Sells open, ready to breed.

I call her Little Val, as her dam is Valentine, and truly hate to part with her as she's done everything right. This sweetheart is a granddaughter of my Jersey milk cow, Bessie. She's 3/4 Angus x 1/4 Jersey, and is sired by MILL BAR HICKOK 7242. Her female relatives have been a big hit in past sales. If you're looking for a heifer for a youngster, look no further. She's as gentle as they come and is put together right!

31

COMMERCIAL HEIFER

Tattoo

ASA#

COMM.

DOB

Adj. BW	Adj. WW	CE	BW	WW	YW	ADG	MCE	Milk	MWW	EPDs %
Stay	Doc	CW	YG	Marb	BF	REA	Shr	API	TI	EPDs %

Sells open, ready to breed.

Here's a commercial SimAngus female that I got by happenstance. She belonged to a neighbor and had gotten in my field multiple times. After the third time, rather than go through the hassle of corralling her, he decided to leave her as she liked my place better than his, apparently. She's stout, is put together right, has been preg checked open, and should make a nice cow.

AGE-ADVANTAGE BULLS

32

SVS MARAUDER KDN2

1/2 SM
1/2 AN
HOMO
POLLED
HOMO
BLACK
Tattoo
KDN2
ASA#
4074329
DOB
3/16/22

CONNEALY CONSENSUS 7229
MILL BAR HICKOK 7242
MILL BAR BEMINDFUL MAID 6304
SVS RELOAD WPF7
SVS COOL BREEZE DNH2
SVS IRISH TALLADEGA NHE2

CONNEALY CONSENSUS
BLUE LILLY OF CONANGA 16
S A V FINAL ANSWER 0035
MILL BAR LADY DI 3400
SRS RIGHT-ON 22R
SVS RUBY BLACK PF7A
BF K065 TALLADEGA
SVS BLACK QUEEN

Adj. BW	Adj. WW	Adj. YW	CE	BW	WW	YW	ADG	MCE	Milk	MWW	EPDs %
79	660	1065	12.2	0.8	77.9	119.8	0.26	4.6	22.2	61.1	
					45	45					
Stay	Doc	CW	YG	Marb	BF	REA	Shr	API	TI		EPDs %
15.4	16.0	36.2	-0.19	0.29	-0.040	0.63	-0.23	129.4	77.4		
45	10	35									

SVS MARAUDER KDN2 is a Homozygous Black, Homozygous Polled half-blood SimAngus sire acceptable for use on heifers. He's moderate, clean-lined and is a frame-reducer. MILL BAR HICKOK 7242 sons are in high demand in today's marketplace.



MILL BAR HICKOK 7242 - SIRE OF LOT 32

33

SVS MUDSLINGER KAM1

PB SM
HOMO
POLLED
HOMO
BLACK
Tattoo
KAM1
ASA#
4074259
DOB
3/25/22

CCR COWBOY CUT 5048Z
TJ HIGH PLAINS 986E
TJ MS 38W
SVS RAM ROD UPF7
SVS WILD CHILD AM10
SVS WHAT A DOLL MB10

TRIPLE C SINGLETARY S3H
CCR MS 4045 TIME 7322T
DIKEMANS SURE BET
TJ 12L
SAND RANCH HAND
SVS RUBY BLACK PF7A
PVF-BF BF26 BLACK JOKER
PVF-BF BG10 DOLL BE22

Adj. BW	Adj. WW	Adj. YW	CE	BW	WW	YW	ADG	MCE	Milk	MWW	EPDs %
81	631	1031	11.4	1.7	73.3	116.8	0.27	8.5	26.7	63.3	
							35	15	25		
Stay	Doc	CW	YG	Marb	BF	REA	Shr	API	TI		EPDs %
16.4	12.2	28.0	-0.40	-0.01	-0.082	0.84	-0.40	124.1	72.4		
45	45						20				

SVS MUDSLINGER KAM1 is Homozygous Black and Homozygous Polled and is backed by CCR COWBOY CUT 5048Z, TJ MS 38W & our WHAT A DOLL MB10 cow family. This sire is rugged with a long stride, depth and a strong top. His daughters will make tremendous cows.



TJ HIGH PLAINS 986E - SIRE OF LOT 33

34

SVS DRIFTER KYSM

PB SM
HOMO
POLLED
HOMO
BLACK
Tattoo
KYSM
ASA#
4074290
DOB
4/11/22

KOCH BIG TIMBER 685D
SVS TIMBERLINE FB09
SVS DO-SI-DO BS09
SVS RAM ROD UPF7
SVS BLACK PEARL YSM2
SVS SEA BREEZE SMF2

HOOK'S YELLOWSTONE 97Y
KOCH MS HOOKS BOY
MR NLC UPGRADE U8676
SVS SANDY S019
SAND RANCH HAND
SVS RUBY BLACK PF7A
BF K065 TALLADEGA
SVS MY LADY LOVE MFC2

Adj. BW	Adj. WW	Adj. YW	CE	BW	WW	YW	ADG	MCE	Milk	MWW	EPDs %
82	789	1116	9.1	1.4	74.7	107.7	0.21	4.1	24.3	61.6	
									45		
Stay	Doc	CW	YG	Marb	BF	REA	Shr	API	TI		EPDs %
15.6	11.7	23.3	-0.43	0.06	-0.100	0.74	-0.33	122.2	74.0		
			45		30						

SVS DRIFTER KYSM is Homozygous Black and Homozygous Polled. He would be good to use on a larger group of mature cows. This long, rugged bull travels freely and combines the SVS SANDY S019, COTT KELBY 019K and SVS RUBY RED cow families...time-tested, proven genetics at their finest.

35

SVS EXPLOSION KHA2

PB SM
HOMO
POLLED
HOMO
BLACK
Tattoo
KHA2
ASA#
4074331
DOB
5/2/22

LRS ELEVATE 213B
SVS COMMON SENSE GASH
SVS VIRGINIA BELLE ASHA
WS PROCLAMATION E202
SVS WILDWOOD FLOWER HAR2
SVS SPELLBOUND ARK2

HOOK'S YELLOWSTONE 97Y
LRS MS DUAL FOCUS 213Z
MR NLC UPGRADE U8676
SVS SCARLETT SH2A
CCR COWBOY CUT 5048Z
WS MISS SUGAR C4
SRS RIGHT-ON 22R
SVS ROSANNE RKC2

Adj. BW	Adj. WW	Adj. YW	CE	BW	WW	YW	ADG	MCE	Milk	MWW	EPDs %
79	637	988	11.8	1.1	78.2	119.1	0.26	6.3	27.6	66.7	
			45	45		45	40	40	20	30	
Stay	Doc	CW	YG	Marb	BF	REA	Shr	API	TI		EPDs %
15.5	6.3	29.9	-0.43	0.16	-0.092	0.89	-0.33	134.2	80.3		
		45	45		30			45	45		

SVS EXPLOSION KHA2 is Homozygous Black and Homozygous Polled. He combines SVS VIRGINIA BELLE ASHA and WS MISS SUGAR C4 cow families and has proven genetics littered throughout his pedigree. His dam raised him as a first calf heifer and she, SVS WILD FLOWER HAR2 with a bull calf at side, also sell. He's moderate, deep and soft-made. Here's one to be proud of!

YEARLING BULLS



LOT 36



LOT 37

36

SVS FIRECRACKER KZT8

PB SM
HOMO
POLLED
RED
Tattoo
KZT8
ASA#
4160598
DOB
10/3/22

IR IMPERIAL B772
IR IMPERIAL D948
IR MS DUAL FOCUS W086
SVS KEEP DREAMIN RNB1
SVS FIREFLY ZTM8
SVS TWILIGHT TMK8

WS BEEF KING W107
IR MS LAUSANNE U022
TNT DUAL FOCUS T249
IR MS LUCKY CHARM T976
CNS DREAM ON L186
SVS DOLLS JOKER NB10
KENCO/MF POWERLINE 204L
SVS JOKERS DARLIN MKD8

Adj. BW	Adj. WW	Adj. YW	CE	BW	WW	YW	ADG	MCE	Milk	MWW	EPDs %
84	617	1103	11.8	0.6	61.9	96.6	0.22	7.8	22.3	53.2	
			45	35				20			
Stay	Doc	CW	YG	Marb	BF	REA	Shr	API	TI		EPDs %
20.3	14.8	14.4	-0.48	0.36	-0.075	0.99	-0.45	150.1	76.0		
10	15		20	20		25	3	20			

SVS FIRECRACKER KZT8 is a cherry Red son of IR IMPERIAL D948. He is great-structured and stands on a big foot. We love his depth of body and he adds calving ease, longevity and carcass quality. From the SVS JOKERS DARLIN MKD8 cow family, here are outcross genetics for our long-time red customers. Here's a crowd pleaser for sure!

37

SVS NIGHT GUARD KCNC

PB SM
HOMO
POLLED
HOMO
BLACK
Tattoo
KCNC
ASA#
4160519
DOB
10/1/22

WS PROCLAMATION E202
LBRS GENESIS G69
LBR DIANA D69
GIBBS 2654Z BULLET PROOF
SVS CREAM PUFF CNBC
SVS DOLLS POWER HOUSE N

CCR COWBOY CUT 5048Z
WS MISS SUGAR C4
HOOK'S XAVIER 14X
LBR DOUBLE TAKE X14
MR NLC UPGRADE U8676
WDG MS P342
WLE POWER STROKE
PVF-BF BG10 DOLL BE22

Adj. BW	Adj. WW	Adj. YW	CE	BW	WW	YW	ADG	MCE	Milk	MWW	EPDs %
76	766	1105	10.4	1.1	91.5	137.8	0.29	5.6	28.0	73.7	
				45	10	15	20		20	10	
Stay	Doc	CW	YG	Marb	BF	REA	Shr	API	TI		EPDs %
19.2	16.9	43.1	-0.32	0.45	-0.072	0.88	-0.36	159.9	94.6		
20	4	10		10			45	10	10		

From the PVF-BF BG10 DOLL BE22 cow family comes SVS NIGHT GUARD KCNC, a Homozygous Black, Homozygous Polled purebred loaded with eye-appeal. He'll add power and stretch to his calves. He's a true breeder bull being top 10% on WW, YW, MILK, MRB and API. He's also top 4% on TI. His sire, LBRS GENESIS G69, has sired high-selling bulls across the country and SVS NIGHT GUARD KCNC is one of his best sons.

YEARLING BULLS

38

SVS READY TO RUMBLE KBS9

PB SM
HOMO
POLLED
HOMO
BLACK
Tattoo
KBS9
ASA#
4160609
DOB
9/17/22

HOOK'S BEACON 56B
KBHR CIMARRON F151
BAR CK MS X38 106Z
MR NLC UPGRADE U8676
SVS DO-SI-DO BS09
SVS SANDY S019

HOOKS SHEAR FORCE 38K
HOOKS ZAFIRAH 41Z
WS HOT BEEF X38
BAR CK MS MEAT MKR 323T
ELLINGSON LEGACY M229
MS NLC MOJO S6119 B
BLACK IRISH KANSAS
COTT KELBY 019K

Adj. BW	Adj. WW	Adj. YW	CE	BW	WW	YW	ADG	MCE	Milk	MWW
78	641	1058	12.5	-0.5	74.5	112.8	0.24	8.8	23.1	60.2
			35	20				10		
Stay	Doc	CW	YG	Marb	BF	REA	Shr	API	TI	
18.4	10.5	27.3	-0.43	0.36	-0.082	0.93	-0.32	153.4	84.6	
25			45	20		40		20	30	

SVS READY TO RUMBLE KBS9 is Homozygous Black and Homozygous Polled. This KBHR CIMARRON F151 son has one of our best cows behind him in SVS SANDY S019. He can be used on heifers and is a high marbling bull with great indexes. With a wide top, high capacity and a moderate frame, he'll add a lot of value to his offspring.



SVS SANDY S019 - MATERNAL GRANDDAM OF LOT 38

39

SVS BUCKSHOT KAUJ

1/2 SM
1/2 AN
POLLED
BLACK
Tattoo
KAUJ
ASA#
4160548
DOB
9/18/22

S A V BISMARCK 5682
S A V BRUISER 9164
S A V MISS BOBBIE 7463
SVS RAM ROD UPF7
SVS SNOW PEA AU1J
SVS IMPRESSION U12J

G A R GRID MAKER
S A V ABIGALE 0451
S A V 004 PREDOMINANT 4438
S A V MISS BOBBIE 4177
SAND RANCH HAND
SVS RUBY BLACK PF7A
SVS GUTS & BUTT RM10
SCC LETS TANGO 124J

Adj. BW	Adj. WW	Adj. YW	CE	BW	WW	YW	ADG	MCE	Milk	MWW
78	672	982	11.9	0.3	74.5	117.7	0.27	8.6	21.9	59.1
								20		
Stay	Doc	CW	YG	Marb	BF	REA	Shr	API	TI	
12.4	11.3	33.8	-0.23	0.17	-0.050	0.66	-0.21	117.0	73.4	
		45								

SVS BUCKSHOT KAUJ is sired by S A V BRUISER 9164 who has been a magical cross on our purebred Simmental cows. Add to that the genetics of the SCC LETS TANGO 24J cow family and you've got something special. He comes with added body, fleshing ability and length. S A V BRUISER 9164 sons are hard to beat!



S A V BRUISER 9164 - SIRE OF LOT 39

40

SVS ALL STAR KXRD

1/2 SM
1/2 AN
HOMO
POLLED
HOMO
BLACK
Tattoo
KXRD
ASA#
4160533
DOB
9/21/22

CONNEALY CONSENSUS 7229
MILL BAR HICKOK 7242
MILL BAR BEMINDFUL MAID 6304
SVS GOLD FINGER SLF2
SVS SAPPHIRE XRLD
SVS ROXIE RLD3

CONNEALY CONSENSUS
BLUE LILLY OF CONANGA 16
S A V FINAL ANSWER 0035
MILL BAR LADY DI 3400
SS GOLDMINE L42
SVS LUCINDA
BF K065 TALLADEGA
SVS LINDY

Adj. BW	Adj. WW	Adj. YW	CE	BW	WW	YW	ADG	MCE	Milk	MWW
80	632	982	12.6	0.0	70.2	104.6	0.22	4.8	20.8	55.8
Stay	Doc	CW	YG	Marb	BF	REA	Shr	API	TI	
15.9	15.2	31.2	-0.22	0.26	-0.045	0.61		127.3	72.9	
40	15									

SVS ALL STAR KXRD is a Homozygous Black, Homozygous Polled half-blood SimAngus solid black bull. He has a monster foot and is huge bodied in a moderate, soft-made package with style. He can be used on heifers and only had an 80 lb. birthweight. Bull's like him are few and far between.



LOT 40

YEARLING BULLS



KBHR CIMMARON F151 - SIRE OF LOT 41

41

SVS MOMENTUM KDS7

PB SM
HOMO
POLLED
HOMO
BLACK
Tattoo
KDS7
ASA#
4160575
DOB
9/24/22

HOOK'S BEACON 56B
KBHR CIMMARON F151
BAR CK MS X38 106Z
SVS SHENANDOAH ZWNA
SVS LAURALEE DSP7
SVS SWEETIE SPL7

HOOKS SHEAR FORCE 38K
HOOKS ZAFIRAH 41Z
WS HOT BEEF X38
BAR CK MS MEAT MKR 323T
ELLINGSON LEGACY M229
SVS LADY BUG WNBA
SRS J914 PREFERRED BEEF
SVS PANSY PLF7

Adj. BW	Adj. WW	Adj. YW	CE	BW	WW	YW	ADG	MCE	Milk	MWW	EPDs % EPDs %
78	723	1052	12.8	-0.2	68.6	103.9	0.22	9.3	24.7	58.9	
			30	25				10	40		
Stay	Doc	CW	YG	Marb	BF	REA	Shr	API	TI		
18.2	10.3	30.0	-0.41	0.32	-0.078	0.95	-0.38	147.8	79.7		
25		45		20		35	30	25			

SVS MOMENTUM KDS7 is a Homozygous Black, Homozygous Polled purebred. With outstanding donors in his pedigree, SVS PANSY PLF7 and SVS BLACK RUBY LB7B, he should sire tremendous replacement females and can be used on heifers. With a nice profile, clean lines and a bit of stretch, he's a front pasture sire for sure.



KBHR HIGH ROAD E283 - SIRE OF LOT 42

42

SVS HOSS KYW9

PB SM
HOMO
POLLED
HOMO
BLACK
Tattoo
KYW9
ASA#
4160617
DOB
10/1/22

HOOK'S BEACON 56B
KBHR HIGH ROAD E283
WS MISS SUGAR C4
SVS RELOAD WPF7
SVS CELEST YW19
SVS CATS MEOW WS19

HOOKS SHEAR FORCE 38K
HOOKS ZAFIRAH 41Z
CLRS GRADE-A 875 A
WS ANISE A71
SRS RIGHT-ON 22R
SVS RUBY BLACK PF7A
CNS DREAM ON L186
SVS SARAH S19K

Adj. BW	Adj. WW	Adj. YW	CE	BW	WW	YW	ADG	MCE	Milk	MWW	EPDs % EPDs %
82	655	1079	11.4	1.5	83.8	125.7	0.26	6.5	24.7	66.5	
					30	30	40	40	40	35	
Stay	Doc	CW	YG	Marb	BF	REA	Shr	API	TI		
17.5	13.7	30.2	-0.42	0.27	-0.080	0.96	-0.35	144.7	85.3		
35	25	45		30		35		30	25		

SVS HOSS KYW9 is a Homozygous Black, Homozygous Polled purebred. He's a big spread bull with top 30% growth and top 25% API and TI. He's moderate with high capacity in a slightly smaller frame. His sire, KBHR HIGH ROAD E283, continues to work well for us and our customers.



LOT 43

43

SVS SHENANIGAN KZU7

PB SM
HOMO
POLLED
HOMO
BLACK
Tattoo
KZU7
ASA#
4160587
DOB
9/30/22

KOCH BIG TIMBER 685D
TJ HEISMAN 388F
TJ 67D
SVS KEEP IT HOT WMBC
SVS REFLECTIONS ZUR7
SVS IRISH MAMA URF7

HOOK'S YELLOWSTONE 97Y
KOCH MS HOOKS BOY
CCR COWBOY CUT 5048Z
TJ MISS 38S
CIRCLE S LEACHMAN 600U
SVS WHAT A DOLL MB10
BLACK IRISH KANSAS
SVS RUBALINA RFB7

Adj. BW	Adj. WW	Adj. YW	CE	BW	WW	YW	ADG	MCE	Milk	MWW	EPDs % EPDs %
84	798	1191	8.7	1.7	82.9	128.6	0.29	7.1	31.8	73.2	
					35	25	20	30	4	10	
Stay	Doc	CW	YG	Marb	BF	REA	Shr	API	TI		
18.6	5.3	30.3	-0.35	0.25	-0.085	0.69	-0.41	142.4	84.4		
25		45		30			15	30	30		

SVS SHENANIGAN KZU7 is a Homozygous Black, Homozygous Polled purebred. This TJ HEISMAN 388F son has top 30% growth and marbling. He traces back to our proven cow families SVS WHAT A DOLL MB10 and SVS RUBY RED and should sire super daughters. He's a complete-made bull with extra stretch, high volume and exceptional muscle. His calves will grow like weeds and push the scales!

YEARLING BULLS

44

SVS ON THE MARK KZXF

PB SM
HETERO
POLLED
HETERO
BLACK
Tattoo
KZXF
ASA#
4160529
DOB
10/1/22

KOCH BIG TIMBER 685D

TJ HEISMAN 388F

TJ 67D

SVS SHARP SHOOTER XPL7

SVS MILKY WAY ZXFA

SVS MAYBELLINE XFWA

HOOK'S YELLOWSTONE 97Y

KOCH MS HOOKS BOY

CCR COWBOY CUT 5048Z

TJ MISS 38S

SVS KEEP DREAMIN RNB1

SVS PANSY PLF7

SVS GUTS & BUTT RM10

SVS RED PASSION

Adj. BW	Adj. WW	Adj. YW	CE	BW	WW	YW	ADG	MCE	Milk	MWW	EPDs %
77	616	1012	10.1	1.0	73.2	110.2	0.23	7.8	27.8	64.4	
				45				20	20	45	
Stay	Doc	CW	YG	Marb	BF	REA	Shr	API	TI		EPDs %
18.8	12.2	21.2	-0.35	0.18	-0.083	0.60	-0.36	136.9	77.1		
20	45			45			45	40			

SVS ON THE MARK KZXF possesses length and a strong top and has built in longevity by design. His dam is a Z model cow with 9 calves recorded on her cow card. She still has a beautiful udder and is going strong. You'd be smart to retain all of his daughters.



TJ HEISMAN 388F - SIRE OF LOT 44

45

SVS IRON FIST KFC9

PB SM
HOMO
POLLED
HETERO
BLACK
Tattoo
KFC9
ASA#
4160602
DOB
10/1/22

HOOK'S BEACON 56B

KBHR HIGH ROAD E283

WS MISS SUGAR C4

SVS SNIPER BM10

SVS LADY GODIVA FCU9

SVS HUMMINGBIRD CU09

HOOKS SHEAR FORCE 38K

HOOKS ZAFIRAH 41Z

CLRS GRADE-A 875 A

WS ANISE A71

SVS SHENANDOAH ZWNA

SVS WHAT A DOLL MB10

WS ALL-AROUND Z35

SVS SNICKERDOODLE US09

Adj. BW	Adj. WW	Adj. YW	CE	BW	WW	YW	ADG	MCE	Milk	MWW	EPDs %
73	642	1013	14.1	-0.6	81.6	121.3	0.25	8.9	19.5	60.3	
			15	20	40	40		10			
Stay	Doc	CW	YG	Marb	BF	REA	Shr	API	TI		EPDs %
18.0	11.9	31.0	-0.39	0.30	-0.069	0.97	-0.38	153.8	87.1		
30	40			25		30	30	20	20		

SVS IRON FIST KFC9 is a Homozygous Polled KBHR HIGH ROAD E283 son. He combines SVS WHAT A DOLL MB10, WS ALL-AROUND Z35, SVS SNICKERDOODLE US09 and SVS SANDY S019 genetics. He has great figures and a time tested pedigree. Add to that, he's deep, nice profiling, clean-made and has a thick quarter. Here's a calving ease spread bull who should be on everyone's list.

46

SVS RANGE ROCKET KDZU

PB SM
HETERO
POLLED
HOMO
BLACK
Tattoo
KDZU
ASA#
4160518
DOB
10/2/22

KOCH BIG TIMBER 685D

TJ HEISMAN 388F

TJ 67D

SVS BELL RINGER ANL3

SVS STILL WATER DZUJ

SVS HARMONY ZU1J

HOOK'S YELLOWSTONE 97Y

KOCH MS HOOKS BOY

CCR COWBOY CUT 5048Z

TJ MISS 38S

MR NLC UPGRADE U8676

SVS NORRICE NLJ3

SVS RAM ROD UPF7

SVS IMPRESSION U12J

Adj. BW	Adj. WW	Adj. YW	CE	BW	WW	YW	ADG	MCE	Milk	MWW	EPDs %
73	723	1009	11.0	0.6	79.5	120.7	0.26	8.1	29.0	68.7	
			35	45	40	40		15	15	25	
Stay	Doc	CW	YG	Marb	BF	REA	Shr	API	TI		EPDs %
17.1	10.6	26.3	-0.33	0.28	-0.076	0.66	-0.39	143.8	84.2		
40				25			25	30	30		

SVS RANGE ROCKET KDZU is Homozygous Black and is from the SCC LETS TANGO 124J cow family that continues to produce outstanding individuals. He is a high marbling spread bull with great indexes. With depth, length and a wide top, here's another TJ HEISMAN 388F son with extra punch.

47

SVS LONG CUT KXMC

1/2 SM
1/2 AN
HOMO
POLLED
HOMO
BLACK
Tattoo
KXMC
ASA#
4160535
DOB
10/3/22

S A V BISMARCK 5682

S A V BRUISER 9164

S A V MISS BOBBIE 7463

ELLINGSON LEGACY M229

SVS CENTER FOLD XMBC

SVS WHAT A DOLL MB10

G A R GRID MAKER

S A V ABIGALE 0451

S A V 004 PREDOMINANT 4438

S A V MISS BOBBIE 4177

NICHOLS LEGACY G151

ELLINGSON MS PSTOCK K58

PVF-BF BF26 BLACK JOKER

PVF-BF BG10 DOLL BE22

Adj. BW	Adj. WW	Adj. YW	CE	BW	WW	YW	ADG	MCE	Milk	MWW	EPDs %
78	692	1087	12.8	-0.1	77.1	120.3	0.27	8.3	20.8	59.3	
			45	45		45		25			
Stay	Doc	CW	YG	Marb	BF	REA	Shr	API	TI		EPDs %
13.0	14.2	35.3	-0.28	0.12	-0.056	0.79	-0.28	118.3	74.4		
25	40			35		30					

SVS LONG CUT KXMC is a Homozygous Black, Homozygous Polled SimAngus half-blood. S A V BRUISER 9164 clicked again with our ELLINGSON LEGACY M229 and SVS WHAT A DOLL MB10 cow. He is a long, moderate frame, smooth-made bull with extra capacity and large, nice-made testicles. He's a calving-ease, front pasture sire.



LOT 47

YEARLING BULLS



KBHR HIGH ROAD E283 - SIRE OF LOT 48

48

SVS ROOTS RUN DEEP KFWB

PB SM
HOMO
POLLED
HOMO
BLACK
Tattoo
KFWB
ASA#
4160512
DOB
10/3/22

HOOK'S BEACON 56B
KBHR HIGH ROAD E283

WS MISS SUGAR C4

CCR COWBOY CUT 5048Z

SVS SHENANDOAH SUNSHINE FWMB

SVS DELILAH WMBB

HOOKS SHEAR FORCE 38K
HOOKS ZAFIRAH 41Z
CLRS GRADE-A 875 A
WS ANISE A71
TRIPLE C SINGLETARY S3H
CCR MS 4045 TIME 7322T
CIRCLE S LEACHMAN 600U
SVS WHAT A DOLL MB10

Adj. BW	Adj. WW	Adj. YW	CE	BW	WW	YW	ADG	MCE	Milk	MWW	EPDs %
79	614	1040	12.9	0.6	82.0	124.7	0.27	7.9	22.3	63.3	
			30	35	35	35	35	20			
Stay	Doc	CW	YG	Marb	BF	REA	Shr	API	TI	EPDs %	
19.2	14.8	32.7	-0.39	0.36	-0.070	0.97	-0.45	156.1	87.6		
20	15	35		20		30	3	15	20		

SVS ROOTS RUN DEEP KFWB is a Homozygous Black, Homozygous Polled purebred. As his name implies, these genetics have been in our herd for many years and never fail to impress. This clean-lined, moderate frame sire combines CCR COWBOY CUT 5048Z and SVS WHAT A DOLL MB10 genetics on the dam side. This bull can do it all. He adds calving ease, growth, longevity and carcass quality. These are genetics to build a herd around.



LOT 49

49

SVS ADVANTAGE KFCW

1/2 SM
1/2 AN
HOMO
POLLED
HOMO
BLACK
Tattoo
KFCW
ASA#
4160508
DOB
10/3/22

S A V BISMARCK 5682
S A V BRUISER 9164
S A V MISS BOBBIE 7463

SVS SNIPER BM10

SVS IVY FCZW

SVS BLACK MAGIC CZW2

G A R GRID MAKER
S A V ABIGALE 0451
S A V 004 PREDOMINANT 4438
S A V MISS BOBBIE 4177
SVS SHENANDOAH ZWNA
SVS WHAT A DOLL MB10
SVS FULL MOON ZSJ2
SVS NO DRAMA MAMA ZWT2

Adj. BW	Adj. WW	Adj. YW	CE	BW	WW	YW	ADG	MCE	Milk	MWW	EPDs %
83	638	1101	12.0	0.6	74.5	119.2	0.28	7.7	17.7	54.9	
							40	35			
Stay	Doc	CW	YG	Marb	BF	REA	Shr	API	TI	EPDs %	
11.0	14.0	34.6	-0.20	0.22	-0.037	0.66		116.9	74.0		
	30	40									

SVS ADVANTAGE KFCW is a Homozygous Black, Homozygous Polled SimAngus sire. He took a tremendous photo. His picture-perfect design combines with lots of muscle and a great foot at the base of his skeleton. He is a show stopper! If you want a great-looking bull, look no further. Our sons of S A V BRUISER 9164 were once again sale toppers last spring. SVS ADVANTAGE KFCW just might be the best one yet!

50

SVS HARD ROCK KARB

PB SM
HOMO
POLLED
HOMO
BLACK
Tattoo
KARB
ASA#
4160526
DOB
10/4/22

HOOK'S BEACON 56B
KBHR HIGH ROAD E283

WS MISS SUGAR C4

SRS RIGHT-ON 22R

SVS WEDDIN' BELLE ARBB

SVS BLACK ROSE RB1B

HOOKS SHEAR FORCE 38K
HOOKS ZAFIRAH 41Z
CLRS GRADE-A 875 A
WS ANISE A71
SRS J914 PREFERRED BEEF
SRS G720 GILLIAN
BF K065 TALLADEGA
PVF-BF BG10 DOLL BE22

Adj. BW	Adj. WW	Adj. YW	CE	BW	WW	YW	ADG	MCE	Milk	MWW	EPDs %
74	687	1048	12.6	-0.1	78.0	118.7	0.25	6.0	26.9	65.8	
			30	25		45		45	25	35	
Stay	Doc	CW	YG	Marb	BF	REA	Shr	API	TI		EPDs %
16.5	15.0	32.8	-0.40	0.26	-0.080	0.92	-0.40	144.5	83.8		
45	15	35		30		40	20	30	30		

SVS HARD ROCK KARB is a Homozygous Black, Homozygous Polled blaze-face purebred. With balanced traits across the board, he can be used on heifers. He only had a 74 lb. birth weight. His daughters should have great udders with SRS RIGHT-ON 22R and PVF-BF BG10 DOLL BE22 on the dam side. This high volume bull has loads of muscle, a wide top and a quiet disposition to boot!

51

SVS NIGHT LIFE KDZB

PB SM
HOMO
POLLED
HOMO
BLACK
Tattoo
KDZB
ASA#
4160521
DOB
10/7/22

KOCH BIG TIMBER 685D
TJ HEISMAN 388F

TJ 67D

SVS SELDOM SEEN AP8H

SVS CORAL BELL DZWB

SVS HIGH HEELS ZWMB

HOOK'S YELLOWSTONE 97Y
KOCH MS HOOKS BOY
CCR COWBOY CUT 5048Z
TJ MISS 38S
SVS SNAP SHOT UN33
SVS PATTY P87H
SVS RELOAD WPF7
SVS DELILAH WMBB

Adj. BW	Adj. WW	Adj. YW	CE	BW	WW	YW	ADG	MCE	Milk	MWW	EPDs %
69	729	1100	11.5	0.5	80.5	122.3	0.26	8.0	29.8	70.0	
			45	35	40	40	40	15	10	20	
Stay	Doc	CW	YG	Marb	BF	REA	Shr	API	TI	EPDs %	
18.9	5.8	24.3	-0.33	0.27	-0.082	0.58	-0.39	148.3	84.9		
20				30			25	25	30		

SVS NIGHT LIFE KDZB is a Homozygous Black, Homozygous Polled purebred. He is a spread son of TJ HEISMAN 388F and is backed by SVS WHAT A DOLL MB10 genetics. He should add growth, sire super daughters, and has balanced EPDs across the board. He travels with ease and displays depth and length in an eye-appealing package.

YEARLING BULLS

S2

SVS LONG KNIFE KZUP

PB SM
HOMO
POLLED
HOMO
BLACK
Tattoo
KZUP
ASA#
4160586
DOB
10/7/22

HOOK'S BEACON 56B
KBHR CIMARRON F151
BAR CK MS X38 106Z
SVS RELOAD WPF7
SVS DOE EYES ZUP7
SVS HONEY BEE UPL7

HOOKS SHEAR FORCE 38K
HOOKS ZAFIRAH 41Z
WS HOT BEEF X38
BAR CK MS MEAT MKR 323T
SRS RIGHT-ON 22R
SVS RUBY BLACK PF7A
DS BLACK ZINGER 141B
SVS PANSY PLF7

Adj. BW	Adj. WW	Adj. YW	CE	BW	WW	YW	ADG	MCE	Milk	MWW	EPDs %
84	762	1194	10.3	1.2	78.7	122.4	0.27	7.8	26.7	66.0	
						40	35	20	25	35	
Stay	Doc	CW	YG	Marb	BF	REA	Shr	API	TI		EPDs %
17.9	12.8	34.7	-0.40	0.31	-0.072	1.00	-0.28	145.9	84.0		
30	35	30		25		25		25	30		

SVS LONG KNIFE KZUP is a Homozygous Black, Homozygous Polled purebred sire. This high marbling bull traces back to our SVS PANSY PLF7 and SVS BLACK RUBY LB7B prolific donor cow families. This stream-lined, strong-topped, long-sided bull should add a touch of frame and style to any set of calves.



KBHR CIMARRON F151 - SIRE OF LOT 52

S3

SVS HALF MOON KEA3

1/2 SM
1/2 AN
HOMO
POLLED
HETERO
BLACK
Tattoo
KEA3
ASA#
4160621
DOB
10/3/22

S A V BRILLIANCE 8077
PVF INSIGHT 0129
PVF MISSIE 790
SVS SHENANDOAH ZWNA
SVS HYDRANGEA EA33
SVS WILDFIRE AN33

S A V BISMARCK 5682
S A V BLACKCAP MAY 5270
P V F NEW HORIZON 001
P V F MISS RAPTOR 024
ELLINGSON LEGACY M229
SVS LADY BUG WNBA
SVS GOLD FINGER SLF2
SVS BLACK SNAP-CRACKLE-P

Adj. BW	Adj. WW	Adj. YW	CE	BW	WW	YW	ADG	MCE	Milk	MWW	EPDs %
87	628	1082	8.9	2.1	70.0	109.7	0.25	5.4	20.7	55.7	
Stay	Doc	CW	YG	Marb	BF	REA	Shr	API	TI		EPDs %
15.3	7.3	41.5	-0.31	0.07	-0.052	0.99	-0.22	108.8	65.8		
		25	30		35	10					

SVS HALF MOON KEA3 is a Homozygous Polled SimAngus bull out of PVF INSIGHT 0129 and a daughter by two of our maternal sires SVS SHENANDOAH ZWNA and SVS GOLD FINGER SLF2. This solid black, soft-made bull is fancy and complete. He is really long with tons of volume from head to tail. With heavy muscle, he will add ribeye size and improve yield grades. He's a looker!



PVF INSIGHT 0129 - SIRE OF LOT 53

S4

SVS BREAKIN' FREE KAXF

PB SM
HOMO
POLLED
HOMO
BLACK
Tattoo
KAXF
ASA#
4160584
DOB
10/8/22

HOOK'S BEACON 56B
KBHR CIMARRON F151
BAR CK MS X38 106Z
SVS KEEP DREAMIN RNB1
SVS MISS KITTY AXF7
SVS GREY MIST XFW7

HOOKS SHEAR FORCE 38K
HOOKS ZAFIRAH 41Z
WS HOT BEEF X38
BAR CK MS MEAT MKR 323T
CNS DREAM ON L186
SVS DOLLS JOKER NB10
SVS GUTS & BUTT RM10
SVS RED PASSION

Adj. BW	Adj. WW	Adj. YW	CE	BW	WW	YW	ADG	MCE	Milk	MWW	EPDs %
85	732	1158	10.1	1.4	74.8	110.7	0.22	8.4	26.1	63.4	
Stay	Doc	CW	YG	Marb	BF	REA	Shr	API	TI		EPDs %
17.6	12.6	29.8	-0.41	0.30	-0.076	0.94	-0.37	141.3	80.6		
35	40	45		25		35	35	35	45		

SVS BREAKIN' FREE KAXF is a Homozygous Black, Homozygous Polled purebred. This KBHR CIMARRON F151 son is a high stay, high marbling bull. He is double bred DOLL on the bottom side. He's long and clean-made with a touch of frame and nice profile. These genetics are designed for profit.

SS

SVS TURBO CHARGED KCSD

PB SM
HOMO
POLLED
HOMO
BLACK
Tattoo
KCSD
ASA#
4160520
DOB
10/9/22

CCR COWBOY CUT 5048Z
TJ HIGH PLAINS 986E
TJ MS 38W
SVS RELOAD WPF7
SVS MISTY DAWN CSND
SVS SWEET PEA SNBD

TRIPLE C SINGLETARY S3H
CCR MS 4045 TIME 7322T
DIKEMANS SURE BET
TJ 12L
SRS RIGHT-ON 22R
SVS RUBY BLACK PF7A
BF K065 TALLADEGA
SVS DOLL POWER NB1D

Adj. BW	Adj. WW	Adj. YW	CE	BW	WW	YW	ADG	MCE	Milk	MWW	EPDs %
76	735	1102	11.8	1.5	85.1	125.3	0.25	7.6	29.6	72.1	
Stay	Doc	CW	YG	Marb	BF	REA	Shr	API	TI		EPDs %
17.0	12.9	29.3	-0.36	0.04	-0.080	0.76	-0.40	131.4	80.5		
40	35						20		45		

SVS TURBO CHARGED KCSD is a Homozygous Black, Homozygous Polled purebred bull sired by TJ HIGH PLAINS 986E. This high growth, high maternal son can be used in many ways. PVF-BF BG10 DOLL BE22 genetics are still relevant today when they continue to produce offspring like him. He moves with ease and combines length and volume with a hint of frame. Here's one to take home.

YEARLING BULLS



56

SVS TOUGH AS NAILS KBZJ

PB SM
HOMO
POLLED
HOMO
BLACK
Tattoo
KBZJ
ASA#
4160525
DOB
10/9/22

CCR COWBOY CUT 5048Z

TJ HIGH PLAINS 986E

TJ MS 38W

SVS VICTORY ZL7E

SVS BRIGITTE BZUJ

SVS HARMONY ZU1J

TRIPLE C SINGLETARY S3H

CCR MS 4045 TIME 7322T

DIKEMANS SURE BET

TJ 12L

SRS RIGHT-ON 22R

SVS BLACK RUBY LB7B

SVS RAM ROD UPF7

SVS IMPRESSION U12J

Adj. BW	Adj. WW	Adj. YW	CE	BW	WW	YW	ADG	MCE	Milk	MWW	EPDs %
84	619	1097	11.1	2.4	76.9	121.3	0.28	8.0	31.2	69.7	
						40	30	15	5	20	
Stay	Doc	CW	YG	Marb	BF	REA	Shr	API	TI		EPDs %
17.9	10.4	29.2	-0.35	0.08	-0.073	0.78	-0.36	131.3	76.1		
30							45				

SVS TOUGH AS NAILS KBZJ is a Homozygous Black, Homozygous Polled purebred. This blaze-face, high maternal bull is rugged-made, big-boned and thick from end to end, with a puppy dog disposition. He'll let the buyer know your calves are part Simmental and his baldy calves will be in demand. The SCC LETS TANGO 124J cow family genetics hit it out of the park again!



57

SVS POWER BUILT KGZR

PB SM
HOMO
POLLED
HOMO
BLACK
Tattoo
KGZR
ASA#
4160503
DOB
10/9/22

HOOK`S BEACON 56B

KBHR HIGH ROAD E283

WS MISS SUGAR C4

SVS HORNET`S NEST DZ13

SVS MOUNTAIN SONG GZUR

SVS SQUARE DANCE ZUR2

HOOKS SHEAR FORCE 38K

HOOKS ZAFIRAH 41Z

CLRS GRADE-A 875 A

WS ANISE A71

SVS MILESTONE ZSP7

SVS GREENER PASTURE ZR13

SVF STAR PLAYER T801

SVS FAT AND SASSY URH2

Adj. BW	Adj. WW	Adj. YW	CE	BW	WW	YW	ADG	MCE	Milk	MWW	EPDs %
78	702	1140	12.5	0.8	84.4	131.2	0.29	7.0	23.4	65.6	
			35	40	30	25	20	30		35	
Stay	Doc	CW	YG	Marb	BF	REA	Shr	API	TI		EPDs %
18.3	15.0	36.9	-0.42	0.28	-0.077	1.07	-0.41	150.8	87.2		
25	15	25		25		15	15	20	20		

SVS POWER BUILT KGZR is a Homozygous Black, Homozygous Polled purebred son of KBHR HIGH ROAD E283. He is a true spread bull with lots of marbling and ribeye. This soggy, wide-topped sire is equally impressive on paper and in the pasture.



58

SVS STILL WATER KDXA

PB SM
HOMO
POLLED
HOMO
BLACK
Tattoo
KDXA
ASA#
4160604
DOB
10/9/22

CCR COWBOY CUT 5048Z

TJ HIGH PLAINS 986E

TJ MS 38W

HOOK`S YELLOWSTONE 97Y

SVS WHISPERIN` PINE DX9A

SVS LILY XS19

TRIPLE C SINGLETARY S3H

CCR MS 4045 TIME 7322T

DIKEMANS SURE BET

TJ 12L

HOOKS TAURUS 24T

HOOKS SHEYENNE 77S

SVS HUMDINGER TR21

SVS SARAH S19K

Adj. BW	Adj. WW	Adj. YW	CE	BW	WW	YW	ADG	MCE	Milk	MWW	EPDs %
83	682	1229	10.4	2.1	91.3	144.6	0.33	5.1	27.1	72.7	
					15	10			25	10	
Stay	Doc	CW	YG	Marb	BF	REA	Shr	API	TI		EPDs %
17.8	11.9	43.7	-0.37	0.05	-0.081	0.95	-0.44	135.5	84.1		
30		10				35	5	45	30		

SVS STILL WATER KDXA is a Homozygous Black, Homozygous Polled purebred backed by proven SVS LILY XS19 and COTT KELBY 019K cow family genetics. He is a slick-haired, high capacity, moderate-frame power bull with a thick, deep quarter. Need a bull to sire calves that excel in growth or replacement heifers? Look no further.

YEARLING BULLS

59

SVS SMOKE & CINDERS KGDJ

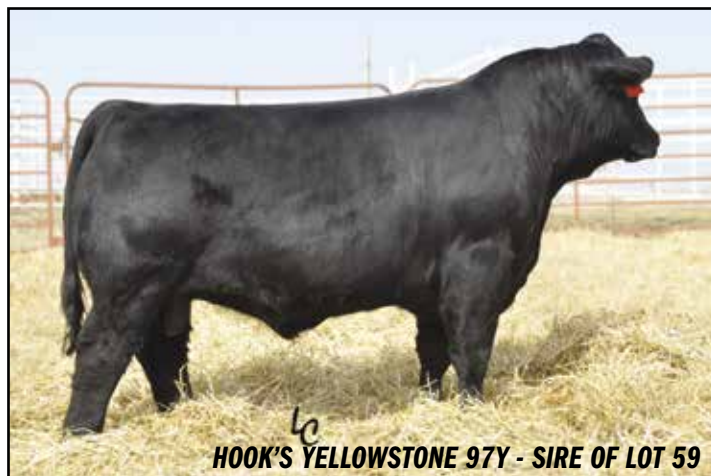
PB SM
HETERO
POLLED
HOMO
BLACK
Tattoo
KGDJ
ASA#
4160506
DOB
10/12/22

HOOKS TAURUS 24T
HOOK'S YELLOWSTONE 97Y
HOOKS SHEYENNE 77S
SVS MAVERICK CPXZ
SVS BETTY SUE GDUJ
SVS MOUNTAIN MINT DU1J

HOOKS SHEAR FORCE 38K
HOOKS PEACHES 48-P
SRS J914 PREFERRED BEEF
TRIPLE C TEARS P02C
SVS BELL RINGER ANL3
SVS SONG BIRD XPFZ
SVS SHENANDOAH ZWNA
SVS IMPRESSION U12J

Adj. BW	Adj. WW	Adj. YW	CE	BW	WW	YW	ADG	MCE	Milk	MWW	EPDs %
84	754	1170	10.1	2.4	85.7	125.4	0.25	5.9	27.6	70.4	
					25	35			20	20	
Stay	Doc	CW	YG	Marb	BF	REA	Shr	API	TI	EPDs %	
14.4	11.6	38.4	-0.44	0.06	-0.098	0.99	-0.39	123.9	80.1		
		20	40		30	25	25		45		

SVS SMOKE & CINDERS KGDJ is a Homozygous Black purebred sire from the reliable SCC LETS TANGO 124J cow family. With extreme volume and a thick quarter, this bull is impressive. He is a high growth bull with lots of ribeye. His calves will be heavy and high yielding. Here is a meat wagon!



HOOK'S YELLOWSTONE 97Y - SIRE OF LOT 59

60

SVS AGAINST THE WIND KAT7

PB SM
HOMO
POLLED
HETERO
BLACK
Tattoo
KAT7
ASA#
4160582
DOB
10/13/22

CNS DREAM ON L186
SVS KEEP DREAMIN' RNB1
SVS DOLLS JOKER NB10
MR NLC UPGRADE U8676
SVS FORGET-ME-NOT ATN7
SVS THERESA TNF7

NICHOLS LEGACY G151
CNS SHEEZA DREAM K107W
PVF-BF BF26 BLACK JOKER
PVF-BF BG10 DOLL BE22
ELLINGSON LEGACY M229
MS NLC MOJO S6119 B
KENCO/MF POWERLINE 204L
SVS NATASHIA NFW7

Adj. BW	Adj. WW	Adj. YW	CE	BW	WW	YW	ADG	MCE	Milk	MWW	EPDs %
86	651	1089	8.9	2.8	75.8	110.7	0.22	6.1	22.5	60.3	
								45			
Stay	Doc	CW	YG	Marb	BF	REA	Shr	API	TI	EPDs %	
15.5	13.6	22.1	-0.54	-0.06	-0.110	0.98	-0.39	113.8	70.4		
	25		5		15	30	25				

SVS AGAINST THE WIND KAT7 is a Homozygous Polled sire with old school genetics. SVS KEEP DREAMIN' RNB1 sires tremendous females and his son should as well. SVS AGAINST THE WIND KAT7 displays the flash and flare and stretch of his sire. Use this long-strided, eye-appealing bull on mature cows to produce females with extreme femininity and beautiful udders. His A model dam has 7 calves on record with the ASA. These PVF-BF BG10 DOLL BE22 genetics are rock solid and never disappoint.



SVS KEEP DREAMIN' RNB1 - SIRE OF LOT 60

61

SVS RING OF FIRE KCAH

PB SM
HOMO
POLLED
RED
Tattoo
KCAH
ASA#
4160522
DOB
10/14/22

IR IMPERIAL B772
IR IMPERIAL D948
IR MS DUAL FOCUS W086
WS ALL-AROUND Z35
SVS ROSES R RED CALH
SVS MIMOSA ALH8

WS BEEF KING W107
IR MS LAUSANNE U022
TNT DUAL FOCUS T249
IR MS LUCKY CHARM T976
WS BEEF KING W107
CDI MS HIGH ROLLER 39W
SVS RAM ROD UPF7
SVS GAMBLERS GAL LHD8

Adj. BW	Adj. WW	Adj. YW	CE	BW	WW	YW	ADG	MCE	Milk	MWW	EPDs %
84	683	1147	13.1	0.1	79.7	126.2	0.29	7.7	17.8	57.6	
			25	25	45	30	20	20			EPDs %
Stay	Doc	CW	YG	Marb	BF	REA	Shr	API	TI		EPDs %
17.7	15.3	28.2	-0.47	0.51	-0.084	1.06	-0.45	163.4	90.9		EPDs %
30	10		25	10		15	3	10	15		EPDs %

SVS RING OF FIRE KCAH is a red Homozygous Polled calving-ease son of IR IMPERIAL D948. His dam is out of the great female maker WS ALL-AROUND Z35. He's moderate in frame, deep and thick with lots of muscle. This bull's daughters will make awesome cows. He's top 10% for MARB and API. This is a true breeder bull.



LOT 61

YEARLING BULLS



LOT 62

A supplement sheet will be available sale day to include updated calving information and for bulls, actual weights, scrotal circumferences and hip heights.

62

SVS HEART BREAKER KBZR

PB SM
HETERO
POLLED
HOMO
BLACK
Tattoo
KBZR
ASA#
4160524
DOB
10/16/22

HOOK'S BEACON 56B
KBHR CIMARRON F151

BAR CK MS X38 106Z

MR ISHEE CATALYST

SVS HIGH FALUTIN` BZUR

SVS SQUARE DANCE ZUR2

HOOKS SHEAR FORCE 38K
HOOKS ZAFIRAH 41Z
WS HOT BEEF X38
BAR CK MS MEAT MKR 323T
ELLINGSON LEGACY M229
ISHEE MS BLK SAPPHIRE
SVF STAR PLAYER T801
SVS FAT AND SASSY URH2

Adj. BW	Adj. WW	Adj. YW	CE	BW	WW	YW	ADG	MCE	Milk	MWW	EPDs %
77	669	1048	13.1	-0.9	67.7	104.2	0.23	9.6	24.6	58.4	
			25	15				5	40		
Stay	Doc	CW	YG	Marb	BF	REA	Shr	API	TI		EPDs %
18.0	10.9	29.6	-0.45	0.47	-0.081	1.03	-0.40	157.9	84.2		
30		45	35	10		20	20	15	30		

SVS HEART BREAKER KBZR is a Homozygous Black purebred bull with a quiet disposition. He is solid black, slick-haired and thick from his shoulders back. It's hard to find a purebred bull with this low of a birth weight and as high marbling. He is a sleep-all-night heifer bull that everyone should want.

63

SVS CHILI PEPPER KAXZ

PB SM
HOMO
POLLED
RED
Tattoo
KAXZ
ASA#
4160528
DOB
10/23/22

WS ALL-AROUND Z35

SVS EVERCLEAR FAR2

SVS SPELLBOUND ARK2

SVS SHARP SHOOTER XPL7

SVS DAISY DUKE AXPZ

SVS SONG BIRD XPFZ

WS BEEF KING W107
CDI MS HIGH ROLLER 39W
SRS RIGHT-ON 22R
SVS ROSANNE RKC2
SVS KEEP DREAMIN RNB1
SVS PANSY PLF7
SVS HUMDINGER TR21
SVS PERFECTION PFZ2

Adj. BW	Adj. WW	Adj. YW	CE	BW	WW	YW	ADG	MCE	Milk	MWW	EPDs %
78	646	1007	11.1	2.0	75.1	104.1	0.18	6.9	27.0	64.5	
								30	25	45	
Stay	Doc	CW	YG	Marb	BF	REA	Shr	API	TI		EPDs %
16.6	12.9	21.6	-0.43	-0.12	-0.098	0.75	-0.33	114.9	69.3		
45	35		45		30						

SVS CHILI PEPPER KAXZ is another red Homozygous Polled purebred bull but this time by SVS EVERCLEAR FAR2, our tremendous WS ALL-AROUND Z35 herdsire. His dam has SVS KEEP DREAMIN RNB1 and SVS HUMDINGER TR21 in the pedigree and they are both great cow makers. Want to add length and a bit of frame to your calves? Here's the bull for you.

64

SVS RUGER KBN3

PB SM
HOMO
POLLED
HOMO
BLACK
Tattoo
KBN3
ASA#
4160622
DOB
10/24/22

KOCH BIG TIMBER 685D

TJ HEISMAN 388F

TJ 67D

ES BLACK ICE SK31

SVS FANDANGO BN33

SVS BLACK SNAP-CRACKLE-P

HOOK'S YELLOWSTONE 97Y
KOCH MS HOOKS BOY
CCR COWBOY CUT 5048Z
TJ MISS 38S
ES DAKOTA NK68
ESK31
BF K030 RED SNAPPER
PVF-BF BH33 HH 101 BD12

Adj. BW	Adj. WW	Adj. YW	CE	BW	WW	YW	ADG	MCE	Milk	MWW	EPDs %
84	727	1088	9.7	2.2	81.1	122.7	0.26	6.4	28.6	69.1	
					40	40	40	40	15	20	
Stay	Doc	CW	YG	Marb	BF	REA	Shr	API	TI		EPDs %
21.3	13.8	22.9	-0.31	0.28	-0.084	0.48	-0.43	148.2	82.9		
4	25			25			10	25	35		

SVS RUGER KBN3 is a Homozygous Black, Homozygous Polled purebred sire. He is solid black, slick-haired, strong-topped, deep-bodied and has a balanced look. This high growth bull has maternal ability as well as exceptional longevity. He travels with ease and his dam is a beautifully feminine, nice-uddered female that always raises something special.



LOT 64

YEARLING BULLS

65

SVS RANGE MASTER KHE7

1/2 SM
1/2 AN
HOMO
POLLED
HOMO
BLACK
Tattoo
KHE7
ASA#
4160561
DOB
10/26/22

CONNEALY CONSENSUS 7229
MILL BAR HICKOK 7242
MILL BAR BEMINDFUL MAID 6304
SVS STOCKADE DZS9
SVS JESSICA HEB7
SVS BUFFALO GAL EBT7

CONNEALY CONSENSUS
BLUE LILLY OF CONANGA 16
S A V FINAL ANSWER 0035
MILL BAR LADY DI 3400
ELLINGSON DOMINATOR W905
SVS COW BELLE ZS09
SVS PATRIOT CXT7
SVS BUCKLE BUNNY BTN7

Adj. BW	Adj. WW	Adj. YW	CE	BW	WW	YW	ADG	MCE	Milk	MWW	EPDs %
79	663	1200	13.3	0.7	86.6	138.3	0.32	4.8	19.9	63.1	
			40		20	15	20			40	
Stay	Doc	CW	YG	Marb	BF	REA	Shr	API	TI		EPDs %
15.7	8.9	45.6	-0.21	0.28	-0.034	0.85	-0.24	136.1	83.2		
45		15				20		45	35		

SVS RANGE MASTER KHE7 is a Homozygous Black, Homozygous Polled half-blood SimAngus bull. He can be used on heifers and has top 30% growth. With a moderate frame, he's soggy, clean-made, and has a small head. Here is a handsome, front pasture papa who's just plain good!



LOT 65

66

SVS HOLLOW POINT KGSL

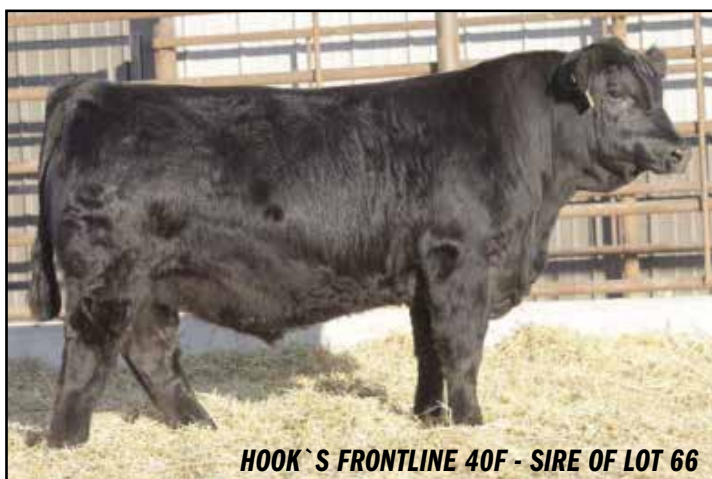
PB SM
HOMO
POLLED
HOMO
BLACK
Tattoo
KGSL
ASA#
4160502
DOB
10/26/22

CDI MAINLINE 265D
HOOK'S FRONTLINE 40F
HOOK'S CARINA 15C
SVS BUSTIN' LOOSE EYR7
SVS PRUDENCE GSNL
SVS SUGAR-N-SPICE SNL2

TJ MAIN EVENT 503B
HOOK'S BEYONCE 82B
HOOKS SHEAR FORCE 38K
HOOK'S YEARN 39Y
HOOK'S YELLOWSTONE 97Y
SVS SHINING STAR YRL7
SS GOLDMINE L42
SVS NORLENE NLF2

Adj. BW	Adj. WW	Adj. YW	CE	BW	WW	YW	ADG	MCE	Milk	MWW	EPDs %
75	641	1041	13.0	-0.2	67.6	99.7	0.20	7.4	29.1	62.9	
			25	25				25	15		
Stay	Doc	CW	YG	Marb	BF	REA	Shr	API	TI		EPDs %
17.6	13.1	21.0	-0.38	0.37	-0.077	0.75	-0.39	148.7	80.5		
35	35		15				25	25	45		

SVS HOLLOW POINT KGSL is a Homozygous Black, Homozygous Polled purebred bull sired by HOOK'S FRONTLINE 40F. He's moderate-framed with plenty of capacity. This blaze-faced bull is a high marbling, high maternal bull who can be used on heifers. He should make tremendous females with SVS SUGAR-N-SPICE SNL2 and SS GOLDMINE L42 in his dam's pedigree.



HOOK'S FRONTLINE 40F - SIRE OF LOT 66

67

SVS SILENCER KFTJ

PB SM
HOMO
POLLED
HETERO
BLACK
Tattoo
KFTJ
ASA#
4160540
DOB
10/27/22

WS ALL-AROUND Z35
SVS EVERCLEAR FAR2
SVS SPELLBOUND ARK2
WS ALL-AROUND Z35
SVS WISH UPON A STAR FT1J
SVS TARA T12J

WS BEEF KING W107
CDI MS HIGH ROLLER 39W
SRS RIGHT-ON 22R
SVS ROSANNE RKC2
WS BEEF KING W107
CDI MS HIGH ROLLER 39W
BF K065 TALLADEGA
SCC LETS TANGO 124J

Adj. BW	Adj. WW	Adj. YW	CE	BW	WW	YW	ADG	MCE	Milk	MWW	EPDs %
84	701	1025	11.9	1.1	79.2	109.5	0.19	6.6	23.7	63.2	
			40	45				35			
Stay	Doc	CW	YG	Marb	BF	REA	Shr	API	TI		EPDs %
16.6	14.7	25.0	-0.38	0.10	-0.092	0.68	-0.31	131.1	78.0		
45	15				30						

SVS SILENCER KFTJ is Homozygous Polled purebred bull. He's a double bred WS ALL-AROUND Z35 bull in a smaller package. He has a proven, predictable pedigree with SCC LETS TANGO 124J as his maternal great granddam and SVS EVERCLEAR FAR2 as his sire. With balanced EPDs, SILENCER is bound to make a positive impact in your herd.



SVS EVERCLEAR FAR2 - SIRE OF LOT 67

YEARLING BULLS



LOT 68

68

SVS OUTLAW KHEZ

3/4 SM
1/4 AN
HOMO
POLLED
HOMO
BLACK
Tattoo
KHEZ
ASA#
4160487
DOB
10/28/22

TJ FROSTY 318E

TJ CHIEF 460G

TJ 52A

SVS STOCKADE DZS9

SVS FIELDS OF GREEN HECZ

SVS DANCIN' QUEEN ECZZ

ACW IRONHIDE 395Y

TJ 58B

TJ NEW TIME LINE 113X

T J MISS DAY R1

ELLINGSON DOMINATOR W905

SVS COW BELLE ZS09

CLRS AFTER SHOCK 604 A

SVS MELODY CZSZ

Adj. BW	Adj. WW	Adj. YW	CE	BW	WW	YW	ADG	MCE	Milk	MWW	EPDs %
81	679	1191	11.1	0.7	86.0	131.2	0.28	3.9	29.9	72.9	
					20	25	40		5	10	
Stay	Doc	CW	YG	Marb	BF	REA	Shr	API	TI	EPDs %	
16.2	7.8	38.2	-0.24	0.10	-0.058	0.66	-0.30	122.7	78.5		
40		30			35						

SVS OUTLAW KHEZ is a Homozygous Black, Homozygous Polled 3/4 SM 1/4 AN. This blaze-face TJ CHIEF 460G son is one of only two 3/4 bulls in the offering and he is a stud! He's a balanced trait bull with exceptional milking ability, and offers mating flexibility to our long time customers. He will add lots of body and extra fleshing ability to his calves. You'll look far and wide to find a herdsire with his style, depth and quality.

69

SVS PEAK PERFORMANCE KHBM

PB SM
HOMO
POLLED
HETERO
BLACK
Tattoo
KHBM
ASA#
4160491
DOB
10/28/22

HOOK'S BEACON 56B

KBHR CIMARRON F151

BAR CK MS X38 106Z

CCR COWBOY CUT 5048Z

SVS LIGHT MY FIRE HBPM

SVS SILVER LINING BPM8

HOOKS SHEAR FORCE 38K

HOOKS ZAFIRAH 41Z

WS HOT BEEF X38

BAR CK MS MEAT MKR 323T

TRIPLE C SINGLETARY S3H

CCR MS 4045 TIME 7322T

WS PRIME BEEF Z8

SVS PARTY TIME PMK8

Adj. BW	Adj. WW	Adj. YW	CE	BW	WW	YW	ADG	MCE	Milk	MWW	EPDs %
86	730	1229	12.4	-0.1	79.5	118.6	0.24	9.7	22.3	62.0	
			35	25	45	45		4			
Stay	Doc	CW	YG	Marb	BF	REA	Shr	API	TI	EPDs %	
19.4	10.9	29.9	-0.37	0.51	-0.060	0.95	-0.39	164.1	90.4		
15		45		10		35	25	10	15		

SVS PEAK PERFORMANCE KHBM is a Homozygous Polled purebred bull. This KBHR CIMARRON F151 son is a negative birth weight, well-balanced bull registering in the top 10% MARB and top 10% API. He's a rugged bull with lots of muscle expression. We love the CCR COWBOY CUT 5048Z and WS PRIME BEEF Z8 genetics in his dam, who stems from the time-tested SVS JOKERS DARLIN MKD8 cow family. Here's one to take your herd to the next level.

70

SVS BONANZA KHF7

3/4 SM
1/4 AN
HOMO
POLLED
HOMO
BLACK
Tattoo
KHF7
ASA#
4160565
DOB
10/31/22

TJ FROSTY 318E

TJ CHIEF 460G

TJ 52A

WLE LAST CALL Y716

SVS FEELIN' FINE HFC7

SVS STAR SHINE FCZ7

ACW IRONHIDE 395Y

TJ 58B

TJ NEW TIME LINE 113X

T J MISS DAY R1

GW LUCKY ACE 076TS

WLE TALLULAH N716

CLRS AFTER SHOCK 604 A

SVS SPARKLES CZL7

Adj. BW	Adj. WW	Adj. YW	CE	BW	WW	YW	ADG	MCE	Milk	MWW	EPDs %
77	591	1016	13.1	-1.2	69.8	102.7	0.21	4.7	28.8	63.6	
			45	30					10	40	
Stay	Doc	CW	YG	Marb	BF	REA	Shr	API	TI	EPDs %	
17.2	13.9	25.6	-0.23	0.16	-0.052	0.53	-0.35	126.8	72.5		
25	30				35						

SVS BONANZA KHF7 is a Homozygous Black, Homozygous Polled 3/4 SM 1/4 AN bull. He's a sleep-all-night heifer bull and is one of only two 3/4 bulls in the offering. His sire, TJ CHIEF 460G, is one of the most popular baldy SimAngus sires in the country, whose progeny top Triangle J and River Creek Farms production sales. This nice-profiling sire excels in milking ability and is backed by never-fail SVS HUMDINGER TR21 genetics on the dam's side. Don't miss this opportunity.



KOCH BIG TIMBER 685E - PATERNAL GRANDSIRE OF LOT 71

71

SVS WILDCAT KDA3

PB SM
HOMO
POLLED
HOMO
BLACK
Tattoo
KDA3
ASA#
4160619
DOB
11/1/22

KOCH BIG TIMBER 685D

SVS TIMBERLINE FB09

SVS DO-SI-DO BS09

SVS FULL MOON ZSJ2

SVS RITA DA33

SVS WILDFIRE AN33

HOOK'S YELLOWSTONE 97Y

KOCH MS HOOKS BOY

MR NLC UPGRADE U8676

SVS SANDY S019

SVS HUMDINGER TR21

SVS SALLY SJZ2

SVS GOLD FINGER SLF2

SVS BLACK SNAP-CRACKLE-P

Adj. BW	Adj. WW	Adj. YW	CE	BW	WW	YW	ADG	MCE	Milk	MWW	EPDs %
79	688	1090	11.6	0.8	77.0	110.9	0.21	6.2	26.6	65.0	
			45	40				45	25	40	
Stay	Doc	CW	YG	Marb	BF	REA	Shr	API	TI	EPDs %	
16.5	12.0	26.8	-0.40	0.08	-0.093	0.76	-0.33	130.3	77.3		
45					30						

SVS WILDCAT KDA3 is a Homozygous Black, Homozygous Polled purebred bull. He's out of SVS TIMBERLINE FB09, a son of KOCH BIG TIMBER 685D, and a beautifully feminine dam. He is a balanced trait bull who is in the top 30% for MILK. With a smooth pattern, a moderate frame, and an excellent disposition, he should sire calves that are the right kind.

YEARLING BULLS

72

SVS TURN THE TIDE KFBX

PB SM
HOMO
POLLED
HETERO
BLACK
Tattoo
KFBX
ASA#
4160513
DOB
11/3/22

WS ALL-AROUND Z35
SVS EVERCLEAR FAR2
SVS SPELLBOUND ARK2
SVS BADLANDS BSNL
SVS RAY OF HOPE FBZX
SVS GOOD TIMES BZX8

WS BEEF KING W107
CDI MS HIGH ROLLER 39W
SRS RIGHT-ON 22R
SVS ROSANNE RKC2
TJ SHARPER IMAGE 809U
SVS SUGAR-N-SPICE SNL2
SVS VICTORY ZL7E
SVS SUNRISE ZXT8

Adj. BW	Adj. WW	Adj. YW	CE	BW	WW	YW	ADG	MCE	Milk	MWW	EPDs %
82	704	1155	9.0	1.8	78.2	116.0	0.24	1.3	26.1	65.2	
									30	40	
Stay	Doc	CW	YG	Marb	BF	REA	Shr	API	TI		EPDs %
17.2	13.0	28.8	-0.34	0.10	-0.078	0.71	-0.33	128.1	76.6		
40	35										

SVS TURN THE TIDE KFBX is a Homozygous Polled purebred bull. Sired by our outstanding SVS EVERCLEAR FAR2, a WS ALL-AROUND Z35 son, and with SVS BADLANDS BSNL and SS GOLDMINE L42 on the dam's side, give this sire loads of genetic potential. He's solid black, has eye-appeal, high volume, a deep quarter and a moderate frame. He has an excellent disposition as a bonus.



Bid Online!

WWW.DVAUCTION.COM/EVENTS/197113

73

SVS FULL TILT KHBK

PB SM
HOMO
POLLED
HOMO
BLACK
Tattoo
KHBK
ASA#
4160488
DOB
11/5/22

HOOK'S BEACON 56B
KBHR CIMARRON F151
BAR CK MS X38 106Z
SVS PATRIOT CXT7
SVS LET IT BE HBPX
SVS MIDNIGHT SUN BPK8

HOOKS SHEAR FORCE 38K
HOOKS ZAFIRAH 41Z
WS HOT BEEF X38
BAR CK MS MEAT MKR 323T
MR NLC UPGRADE U8676
SVS MOLASSES XTP7
SVS SNAP SHOT UN33
SVS PARTY GAL PKD8

Adj. BW	Adj. WW	Adj. YW	CE	BW	WW	YW	ADG	MCE	Milk	MWW	EPDs %
86	658	1124	12.7	0.1	68.3	104.9	0.23	7.9	23.4	57.5	
			30	25				20			
Stay	Doc	CW	YG	Marb	BF	REA	Shr	API	TI		EPDs %
17.3	11.7	31.2	-0.44	0.36	-0.086	0.98	-0.34	148.0	80.2		
35		40	40	20		30		25	45		

SVS FULL TILT KHBK is a Homozygous Black, Homozygous Polled purebred. He's made great. We love his huge rib and three dimensional look. He is heavy muscled while still being really sound. He's a calving ease, high marbling sire with balanced EPDs. With SVS PATRIOT CXT7, a SVS HUMDINGER TR21 grandson on the dam's side, expect him to sire incredible females. We can't say enough good things about PATRIOT offspring. If you've got them, keep them!



74

SVS UPROAR KH52

1/2 SM
1/2 AN
HOMO
POLLED
HOMO
BLACK
Tattoo
KH52
ASA#
4160627
DOB
11/5/22

CONNEALY CONSENSUS 7229
MILL BAR HICKOK 7242
MILL BAR BEMINDFUL MAID 6304
SVS REVEILLE BU09
SVS LOVELY DAY HY52
SVS BUTTONS N BOWS YR52

CONNEALY CONSENSUS
BLUE LILLY OF CONANGA 16
S A V FINAL ANSWER 0035
MILL BAR LADY DI 3400
SRS RIGHT-ON 22R
SVS SNICKERDOODLE US09
SRS RIGHT-ON 22R
SVS BIG TOWN RH52

Adj. BW	Adj. WW	Adj. YW	CE	BW	WW	YW	ADG	MCE	Milk	MWW	EPDs %
83	753	1072	12.5	0.9	78.4	112.3	0.21	5.2	24.6	63.8	
					45				35	40	
Stay	Doc	CW	YG	Marb	BF	REA	Shr	API	TI		EPDs %
15.3	14.9	27.7	-0.18	0.30	-0.032	0.55	-0.27	128.5	77.6		
	20										

SVS UPROAR KH52 is a Homozygous Black, Homozygous Polled, half-blood SimAngus bull. This is a spread bull out of MILL BAR HICKOK 7242 and a SVS REVEILLE BU09 and SRS RIGHT-ON 22R cow. He's deep bellied, moderate in frame and has an excellent disposition. With this pedigree, his daughters should be keepers and his calves should push the scales on sale day. And in today's market, pounds pay!



YEARLING BULLS



SVS TIMBERLINE FB09 - SIRE OF LOT 75

75

svs BIG TIME KGS2

PB SM
HOMO
POLLED
HETERO
BLACK
Tattoo
KGS2
ASA#
4160555
DOB
11/9/22

KOCH BIG TIMBER 685D
SVS TIMBERLINE FB09
SVS D0-SI-D0 BS09
SVS CLEAR WATER DBZ9
SVS PINK CADILLAC GSJ2
SVS SALLY SJZ2

HOOK'S YELLOWSTONE 97Y
KOCH MS HOOKS BOY
MR NLC UPGRADE U8676
SVS SANDY S019
LRS ELEVATE 213B
SVS BLACK GYPSY BZ09
BF K065 TALLADEGA
SVS RED SUNSET

Adj. BW	Adj. WW	Adj. YW	CE	BW	WW	YW	ADG	MCE	Milk	MWW	EPDs %
80	785	1086	10.8	0.1	78.7	112.6	0.21	5.5	25.2	64.5	
				25					35	45	
Stay	Doc	CW	YG	Marb	BF	REA	Shr	API	TI		EPDs %
15.2	11.9	27.7	-0.41	0.04	-0.093	0.78	-0.32	126.1	77.8		
					30						

SVS BIG TIME KGS2 is a Homozygous Polled purebred bull. His dam's pedigree includes bulls that have worked great on our cows including LRS ELEVATE 213B, DIKEMANS SURE BET, BF K065 TALLADEGA and BOZ REDCAT D162. His maternal great granddam was a gorgeous-uddered female in our donor program. This bull is moderate, strong-topped and has depth of rib. This low birth weight EPD bull has balanced traits and should sire calves that are the right kind.



LOT 76

76

svs FLAMIN' HOT KX19

PB SM
HETERO
POLLED
RED
Tattoo
KX19
ASA#
4160618
DOB
12/19/22

WS ALL-AROUND Z35
SVS EVERCLEAR FAR2
SVS SPELLBOUND ARK2
SVS HUMDINGER TR21
SVS LILY XS19
SVS SARAH S19K

WS BEEF KING W107
CDI MS HIGH ROLLER 39W
SRS RIGHT-ON 22R
SVS ROSANNE RKC2
CNS DREAM ON L186
SVS REBEKAH RM21
BLACK IRISH KANSAS
COTT KELBY 019K

Adj. BW	Adj. WW	Adj. YW	CE	BW	WW	YW	ADG	MCE	Milk	MWW	EPDs %
82	697	1179	11.2	2.0	77.9	111.9	0.21	5.6	24.6	63.5	
									40		
Stay	Doc	CW	YG	Marb	BF	REA	Shr	API	TI		EPDs %
17.3	11.5	30.8	-0.47	-0.08	-0.113	0.86	-0.35	121.2	72.4		
35		45	25		4						

SVS FLAMIN' HOT KX19 is a red blaze-face son of SVS EVERCLEAR FAR2 out of our donor SVS LILY XS19, and a maternal grandson of SVS HUMDINGER TR21. He provides outcross genetics with an outstanding, proven cow family which is a hard combination to make. He's deep-bodied, long and extremely good natured. If you're into performance and flat out good cattle, here's the bull for you.

77

svs COUNTRY ROADS KYNF

PB SM
HOMO
POLLED
HOMO
BLACK
Tattoo
KYNF
ASA#
4160559
DOB
11/19/22

WS ALL-AROUND Z35
SVS EVERCLEAR FAR2
SVS SPELLBOUND ARK2
SRS RIGHT-ON 22R
SVS HOPE YNF2
SVS NICHOLE NFC2

WS BEEF KING W107
CDI MS HIGH ROLLER 39W
SRS RIGHT-ON 22R
SVS ROSANNE RKC2
SRS J914 PREFERRED BEEF
SRS G720 GILLIAN
PVF-BF BF26 BLACK JOKER
SVS MADONNA

Adj. BW	Adj. WW	Adj. YW	CE	BW	WW	YW	ADG	MCE	Milk	MWW	EPDs %
82	890	1256	10.5	3.8	86.3	126.1	0.25	5.7	29.4	72.5	
					25	30			10	10	
Stay	Doc	CW	YG	Marb	BF	REA	Shr	API	TI		EPDs %
17.0	13.1	30.8	-0.40	0.04	-0.093	0.81	-0.34	125.9	78.2		
40	35	45			30						

SVS COUNTRY ROADS KYNF is a Homozygous Black, Homozygous Polled purebred bull. He is unique because he offers extreme growth and milk. He is also a high docility bull. With impressive volume from nose to tail, this strong-topped, soft-made bull is a head turner. His sire, a WS ALL-AROUND Z35 son, consistently sires the right kind. Use him on mature cows to sire calves that put money in your pocket.

78

svs RED DIRT ROAD KHBZ

PB SM
HOMO
POLLED
RED
Tattoo
KHBZ
ASA#
4160497
DOB
11/23/22

HOOKS SHEAR FORCE 38K
SVS NIGHT SKY HR7B
SVS ROSEBUD RLB7
SVS PATRIOT CXT7
SVS BORN FREE HBZB
SVS WHIPPOORWILL BZPB

NICHOLS LEGACY G151
C&D TRACY
BF K065 TALLADEGA
SVS BLACK RUBY LB7B
MR NLC UPGRADE U8676
SVS MOLASSES XTP7
SVS VICTORY ZL7E
SVS SHASTA ZPFB

Adj. BW	Adj. WW	Adj. YW	CE	BW	WW	YW	ADG	MCE	Milk	MWW	EPDs %
88	723	1133	11.0	2.5	79.9	112.5	0.20	5.2	29.0	68.9	
					45				15	25	
Stay	Doc	CW	YG	Marb	BF	REA	Shr	API	TI		EPDs %
18.1	12.6	28.7	-0.58	0.02	-0.121	1.10	-0.34	127.8	76.2		
30	40		2		2	15					

SVS RED DIRT ROAD KHBZ is a red Homozygous Polled purebred bull out of a HOOKS SHEAR FORCE 38K son and a SVS PATRIOT CXT7 dam. This is the first son of SVS NIGHT SKY HR7B to be offered. He should make tremendous females to retain in the herd. He's a high capacity, heavy muscled bull and a frame moderator. With SVS ROSEBUD RLB7, SVS BLACK RUBY LB7B and SVS HUMDINGER TR21 in this pedigree, his genetics are stacked for success.

QUICK REFERENCE TO ASA EPDS AND \$ INDEXES

Expected Progeny Differences (EPDs): EPDs are the most accurate and effective tool available for comparing genetic levels. In using EPDs, the difference between two sires' EPDs represents the unit difference expected in the performance of their progeny. For example, if sires A and B have EPDs of +10 and -5, a 15-unit difference would be expected in their progeny (moving from -5 to +10 yields 15 units).

Key to using EPDs is knowing what units they are expressed in. For example, if the above case referred to weaning weight EPDs, A would be expected to sire 15-pounds more weaning weight than B. If calving ease were the trait, A would be expected to sire 15-percent more unassisted births in first-calf heifers; in other words, if B sired 30 assists in a group of 100 heifers, we'd expect A to require 15 assists. A percentile-ranking chart is required to determine where a bull's EPDs rank him relative to other bulls in the breed. For percentile rankings or more detailed information about EPDs and \$ indexes visit www.simmental.org. Listed below are the units ASA EPDs are expressed in:

All-Purpose Index (API): Dollars per cow exposed under an all-purpose-sire scenario. (See below for more details.)

Back Fat (BF): Inches of backfat.

Birth Weight (BW): Pounds of birth weight.

Calving Ease (CE): Percent of unassisted births when used on heifers.

Carcass Weight (CW): Pounds of carcass weight.

Maternal Calving Ease (MCE): Percent of unassisted births in first-calving daughters.

Milk (MLK): Pounds of weaning weight due to milk.

Marbling (MRB): Marbling score.

Maternal Weaning Weight (MWW): Pounds of weaning weight due to milk and growth.

Ribeye Area (REA): Square inches of ribeye.

Warner-Bratzler Shear Force (WBSF): Pounds of force required to shear a steak.

Stayability (STAY): Percent of daughters remaining in the cowherd at 6 years of age.

Terminal Index (TI): Dollars per cow exposed under a terminal-sire scenario. (See below for more details.)

Weaning Weight (WW): Pounds of weaning weight.

Yearling Weight (YW): Pounds of yearling weight.

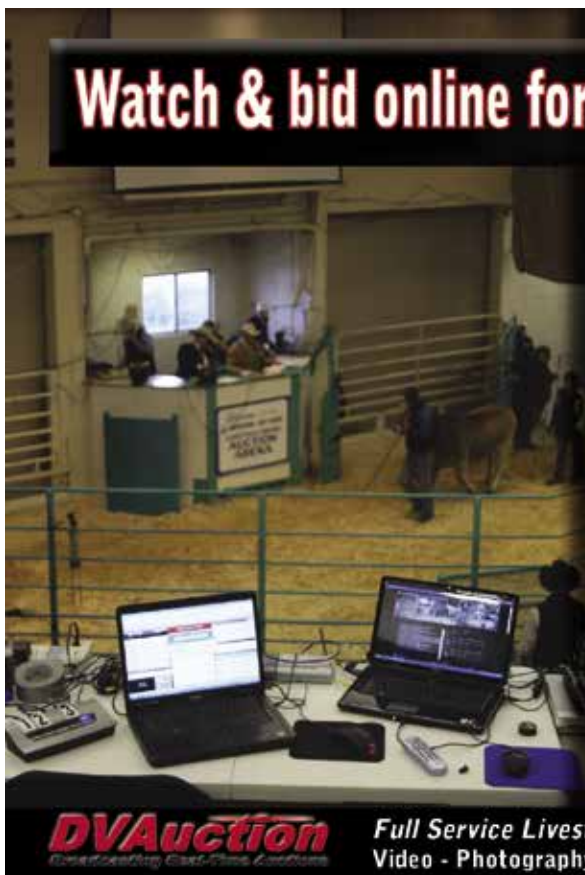
Yield Grade (YG): Yield grade score.

\$ Indexes: Though EPDs allow for the comparison of genetic levels for many economically important traits, they only provide a piece of the economic puzzle. That's where \$ indexes come in. Through wellconceived, rigorous mathematical computation, \$ indexes blend EPDs and economics to estimate an animal's overall impact on your bottom line. The same technology that led to the dramatic progress in swine, poultry and dairy genetics over the last several decades was used to develop the following \$ indexes:

All-Purpose Index (API): Evaluates sires for use on the entire cow herd (bred to both Angus first-calf heifers and mature cows) with the portion of their daughters required to maintain herd size retained and the remaining heifers and steers put on feed and sold grade and yield.

Terminal Index (TI): Evaluates sire for use on mature Angus cows with all offspring put on feed and sold grade and yield.

Using API and TI: First, determine which index to use; if you're keeping replacements use API, if not, TI. Then, just as with EPDs, zero in on the unit difference between bulls. (As described above, index units are in dollars per cow exposed.) The difference can be used to determine how much a bull is worth compared to another. Or, put another way, how much you can pay for one bull compared to another. For example, when buying an all-purpose-type sire, you can quickly figure a bull scoring +100 for API is worth an extra \$6,000 over a +50 bull if both are exposed to 30 cows over 4 years (\$50 diff. x 30 hd. x 4 yr. = \$6,000). A percentile-ranking chart is required to determine where a bull's index value ranks him relative to other bulls in the breed. For percentile rankings or more detailed information about EPDs and \$ indexes visit simmental.org.



Watch & bid online for FREE at

DVAuction
Broadcasting Real-Time Auctions

Can't make the sale? Bid from home with DV Auction's "real-time" internet bidding service!

Buying online is as easy as 1, 2, 3...

1. Create an account at www.dvauction.com under the "register" tab
2. Apply for bidding approval by clicking on the "details" tab at least 24 hours prior to the auction-a DV representative will notify you once you have been approved
3. Tune in for the sale and make your purchases!

After the sale, contact the sale manager or owner to arrange transportation and payment. **High speed internet** is required for successful bidding-be sure to check the lag-time monitor in the top left corner to ensure real-time broadcasts.

Proxy Bidding-if you can't make time to watch the sale, register a proxy bid and let our system represent your bid while you're away. Look for the "proxy bid" tab on the auction listing, and fill in your maximum bids. We'll handle the rest!

Having troubles? During the auction, you can type a message to the operator at any time for assistance. Our full-time support team can also always be reached at (402) 474-5557.

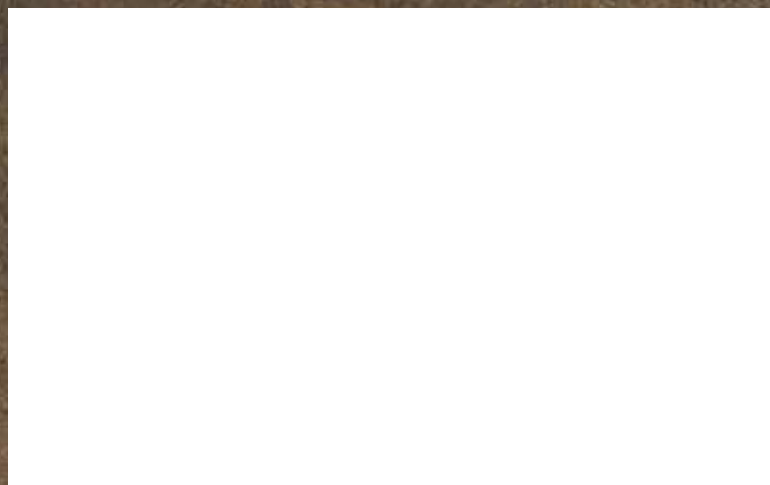
DVAuction
Broadcasting Real-Time Auctions

Full Service Livestock Marketing

Video - Photography - The Stock Exchange - Ring Service - Banner Ads - Onsite Viewing Service



Ruble Cattle Services
1525 140th Street
Corydon, IA 50060



For updated sale information and videos visit
www.rublecattleservices.com or www.shenandoahvalleysimmentals.com

Catalog designed by
 **Generation 6**
marketing
www.generation6.co