



# *Shenandoah's* **shining stars**

**November 19, 2016    1:00 pm**

*Shenandoah Valley*  
*Simmentals*

at the Farm Quicksburg, VA



# Greetings

It's sale time! Please join us Saturday, November 19, 2016 at 1:00 pm for our 8th production sale and the best set of cattle yet!

For 40 years our focus has been raising cattle with breed-leading performance and longevity, with outstanding phenotype, consistency and style. While we also raise fancy SimAngus™, our forte is elite, outcross, purebred Simmental genetics.

These bulls are the stoutest, most uniform group ever raised. They're athletes, developed in Virginia range conditions, not in a dry lot. They're designed to efficiently convert grass to meat, thrive on fescue, travel rough country, and withstand the wide weather extremes experienced in these mountains.

The bulls sired by our herdsires, as are the females being offered, are exceptional. Using bulls with our "homegrown" genetics should produce offspring like these fancy spring-bred heifers, who showcase our herdsires extremely well. As a bonus, some of these heifers are bred to SVS Badlands BSNL who was purchased in our last sale by Accelerated Genetics. Be the first to own these exciting new genetics.

This year we've added highlights to make your visit to Virginia extra special. Tommy and Georgie Wright, owners of Smith Creek Heritage Farm, have graciously offered free tours of their unique farm equipment and collectibles museum on Friday and Saturday by appointment. This is a must see! And on sale day, the Spinks family will be selling homemade wares such as soaps, candles, home décor, butcher block cutting boards, etc. We hope you enjoy these special touches.

And I'd like to extend a sincere "thank you" to the talented, dedicated individuals who help make this sale possible, with a special thanks to Barry Armstrong, and Doug Parke and crew.

Our video auction is held in an 1860's barn decorated with old farm implements and antiques. Come and view the cattle on this historic Century Farm and enjoy the southern hospitality. Sale time is a great time of year. It's like an extended family reunion where friends from near and far gather in the beautiful Shenandoah Valley to talk cow. What could be better than that?

If you have questions please contact me and visit our newly updated website containing the on-line catalog and videos. Hope to see you soon!

Lisa Zirkle  
Shenandoah Valley Simmentals

# Welcome

to the Shenandoah Valley!

There isn't many places better to utilize as a backdrop for a great group of Simmental genetics that the luscious Shenandoah Valley. It truly is a beautiful region, and you must make the trip to Quicksburg because Lisa keeps them nestled in the valley!

Lisa's production oriented operation continues to grow and mature each year. You will see from the offering this year that she is offering more bulls that ever before. These bulls are all of the most outstanding quality, and have passed Lisa's rigorous approval. There are 5 very special, fancy ladies being offered. This is indeed a dip into some of Lisa's finest female genetics. If you are looking for more of those keep kind females you will have to wait for further details on an exciting opportunity.

As always, Lisa and her crew have everything in order on the Simmental genetics she is offering. Feel free to give Lisa a call and discuss with her the offering. If we can be of assistance please feel free to contact us, or utilize DV Auctions for your bidding needs. We look forward to sharing the Shenandoah Stars with you on November 19th.



DP Sales Management, LLC



## Embryos Available...

*We have a select number of high quality embryos available on some of our top donors as well as our rising stars. If you are interested in frozen genetics on any of the donors you see listed in the catalog, please contact Lisa Zirkle for more information.*

# Shenandoah's

## shining stars

**November 19, 2016 1:00 pm**

### *Shenandoah Valley Simmentals*

Lisa R Zirkle  
3961 S Middle Rd. Quicksburg, VA 22847  
540.335.1885 lisaz1@shentel.net  
Barry Armstrong 540.975.1474  
www.shenandoahvalleysimmentals.com

*GPS directions are incorrect and will not bring you to the farm please follow signs in the hotel*

### *Sale Day Phone*

**540.740.2527 • 540.740.2530**

Doug Parke **859.421.6100** Drew Hatmaker **423.506.8844**

### *Motels*

*Quality Inn Shenandoah Valley* 540.740.3141 or 540.740.3250  
162 West Old Cross Rd (Exit 284 off I-81), New Market, VA 22844  
(block of rooms reserved; ask for the Shenandoah's Shining Stars sale)

*Holiday Inn Express* 540.459.5000  
1130 Motel Dr., Woodstock, VA

*Courtyard by Marriott* 540.432.3031  
1890 Evelyn Byrd Ave. Harrisonburg, VA

### *Sale Staff*

Tommy Carper, Auctioneer 540.336.2737  
Shane Ryan, Special Assignment 309.371.7490  
Marshal Tingle, Special Assignment 859.553.1908  
Dr. Justin Hill, Herd Veterinarian 540.879.2581

### *Consultants*

Doug Parke, DP Sales Management, LLC 859.987.5758  
Drew Hatmaker, DP Sales Management, LLC 423.506.8844  
Kerry Lawrence 740.404.0463  
Martin Macqueen 540.839.9494  
540.965.2199

### *Insurance*

Insurance for your purchases will be available at the clerk's table.  
American Livestock Insurance: Jame Secondino 812.208.0956

### *Special Guests*

Chad Joines, President VA Sim. Assoc. 540.231.6280  
Bill McDonald, ASA Past President 540.552.2947

### *Trucking*

Lowell Caplinger 540.560.9293  
Local trucking also available.

### *Sale Terms and Conditions*

All animals will be sold in accordance with the suggested guidelines of the American Simmental Assoc. For updated EPDs, genetic status, plus the current ASA guidelines and conditions go to [www.simmental.org](http://www.simmental.org).  
Announcements made sale day and from the auction block during the sale take precedence over printed material associated with this sale.  
Anyone attending this sale attends at his or her own risk, Shenandoah Valley Simmentals or DP Sales Management, LLC will not be responsible for any personal injury while attending this sale

### *Semen Interest*

We're selling full possession and 70% semen interest of all bulls and we're retaining 30% semen interest. The buyer has total control of the bull, 100% possession, 100% salvage value and 70% semen interest. Any bulls affected will be collected at the buyer's convenience and our expense. This will actually affect very few bulls.

### *Announcements*

Announcements at the sale by the owners or auctioneer will take precedence over statements in the sale catalog. We reserve the right to withdraw any sale lot not meeting our specifications prior to sale time.

### *Herd Health*

All cattle will have proper health certificates for immediate interstate shipment. The bred females have been pregnancy examined and are confirmed safe. All bulls have passed a breeding soundness examination. Each animal will be at the purchaser's risk immediately after it is sold. An updated data sheet will be available sale day.

### *Sale Registration and Payment*

All buyer numbers will only be issued with a valid ID and payment is due day of sale. DP Sales Management would appreciate timely settlement of receivables within 15 days of date of sale. Cattle will not be transferred until paid for in full DP Sales accepts Visa & Mastercard.

### *Registration Certificates*

Cattle will be transferred to the buyer at the seller's expense. Buyers must provide the sale clerk with complete information for transferring registration certificates.

### *EPDs*

The EPDs listed are the new Fall 2016 numbers. Please note the EPDs may change from the time the sale catalog is printed until registration papers are transferred.

### *Sale Manager*



Doug & Debbie Parke • 859.421.6100  
Drew & Holli Hatmaker • 423.506.8844  
153 Bourbon Hills • Paris, KY 40361  
859.987.5758 • [office@dpsalesllc.com](mailto:office@dpsalesllc.com)  
[www.dpsalesllc.com](http://www.dpsalesllc.com)



# Lily Family



SVS Rocky Top CX9C



SVS Lily XS19  
- reference dam



SVS Titan CX19

# Sandy Family



SVS Flyin' High CY09

## 1

## SVS Rocky Top CX9C

ASA#... 3137061

BD... 10/1/15

Tattoo... CX9C

**WS All-Around Z35**

*Purebred*

**SVS Lily XS19**

WS Beef King W107

CDI Ms High Roller 39W

SVS Humdinger TR21

SVS Sarah S19K

Adj BW **78**

Adj WW **877**

Adj YW **1440**

CE	BW	WW	YW	ADG	MCE	Milk	MWW	Stay	CW	YG	Marb	BF	REA	Shr	API	TI
13	1.8	76	111	0.22	12	24	62	25.6	38.2	-0.21	0.23	-0.041	0.7	-0.45	147	79
% 15		10	10	20	15	30	10	10	15		30			15	10	10

What a papa! Rocky Top explodes with mass, power and muscle. With an API of 147, and 13 EPDs in the top 30% of the breed, this versatile ET calf out of Lily defines performance. He's a widespread EPD bull excelling in calving ease, growth and maternal characteristics. This homozygous black bull is long-strided and deep. No matter how he's used, he should sire amazing calves. Rocky Top is destined for greatness.

## 2

## SVS Titan CX19

ASA#... 3137050

BD... 11/4/15

Tattoo... CX19

**SVS Seldom Seen AP8H**

*Purebred*

**SVS Lily XS19**

SVS Snap Shot UN33

SVS Patty P87H

SVS Humdinger TR21

SVS Sarah S19K

Adj BW **82**

Adj WW **888**

Adj YW **1429**

CE	BW	WW	YW	ADG	MCE	Milk	MWW	Stay	CW	YG	Marb	BF	REA	Shr	API	TI
8	2.8	66	95	0.19	10	27	60	21.3	30.5	-0.32	-0.03	-0.067	0.71	-0.35	113	66
%						10	10		35		35					

With balanced EPDs, this high maternal bull is backed by powerful genetics on both sides of his pedigree. This natural calf of Lily displays extreme length with impressive volume and muscle and travels freely. Lily genetics are phenomenally productive. If you're looking to put pounds on calves or raise fantastic replacement females, look no further!

## 3

## SVS Flyin' High CY09

ASA#... 3137038

BD... 9/30/15

Tattoo... CY09

**Mr NLC Upgrade U8676**

*Purebred*

**SVS Leather N Lace YS09**

Ellingson Legacy M229

Ms NLC Mojo S6119 B

SVS Gold Finger SLF2

SVS Sandy S019

Adj BW **80**

Adj WW **698**

Adj YW **1207**

CE	BW	WW	YW	ADG	MCE	Milk	MWW	Stay	CW	YG	Marb	BF	REA	Shr	API	TI
6	2.3	72	111	0.25	9	19	55	20.9	39.6	-0.44	0.19	-0.088	1.05	-0.21	127	75
%		20	10	5					15	10		10	10			20

Here's a homozygous black, homozygous polled show stopper. Flyin' High is one of the deepest, most impressive bulls in this offering. With powerful yet balanced EPDs, he excels in growth and carcass merit. He moves freely and displays extreme muscle and power wrapped in a flashy, moderate package. Flyin' High should help your herd soar to the next level.

4

## SVS Legend CW09

ASA#... 3088374

BD... 4/01/15

Tattoo... CW09

SVS Shenandoah ZWNA

Purebred

SVS Miss Frisky WS09

Ellingson Legacy M229

SVS Lady Bug WNBA

SVS Sledge Hammer TM10

SVS Sandy S019

Adj BW 82

Adj WW 758

CE	BW	WW	YW	ADG	MCE	Milk	MWW	Stay	CW	YG	Marb	BF	REA	Shr	API	TI
11	1.0	58	83	0.16	12	22	51	30.2	20.6	-0.41	-0.01	-0.066	0.88	-0.39	136	64
%					15			1		15				30	25	

Here's a homozygous black female producer. Legend is the natural son of Miss Frisky, who just entered our donor program and she's a maternal sibling to Snickerdoodle and a daughter of our tremendous donor, Sandy. This calving ease, maternal bull ranks in the top 1% for stayability. Legend is a smooth, high-volume, soft-made bull with ample muscle. If you want to sire amazingly beautiful females and calves that shine in the spotlight, Legend is for you.



SVS Legend CW09

5

## SVS Eagle's Cry CAXZ

ASA#... 3137022

BD... 9/29/15

Tattoo... CAXZ

Ellingson Legacy M229

Purebred

SVS Daisy Duke AXPZ

Nichols Legacy G151

Ellingson Ms Pstock K58

SVS Sharp Shooter XPL7

SVS Song Bird XPFZ

Adj BW 87

Adj WW 729

Adj YW 1217

CE	BW	WW	YW	ADG	MCE	Milk	MWW	Stay	CW	YG	Marb	BF	REA	Shr	API	TI
12	1.6	63	85	0.14	11	24	55	23.4	22.6	-0.49	0.02	-0.08	1.07	-0.29	126	67
%	25				25	30		25		2		10	10			

There's a common thread. The Songbird cow family who produced Rawhide and Maverick, also produced Eagle's Cry. Here's a calving ease, high maternal, blaze-faced bull with plenty of growth and excellent carcass traits. Eagle's Cry is homozygous black and homozygous polled. He's long-spined, heavy-muscled, masculine and is backed by rock solid genetics. Didn't his first calf heifer dam do a great job! These exciting genetics should be a welcome addition to any herd and are the kind to build a herd around.

SVS Sandy S019  
- reference dam

Songbird Family



SVS Eagle's Cry CAXZ

6

## SVS Maverick CXPZ

ASA#... 3137053

BD... 11/5/15

Tattoo... CXPZ

SVS Sharp Shooter XPL7

Purebred

SVS Song Bird XPFZ

SVS Keep Dreamin RNB1

SVS Pansy PLF7

SVS Humdinger TR21

SVS Perfection PFZ2

Adj BW 83

Adj WW 831

Adj YW 1291

CE	BW	WW	YW	ADG	MCE	Milk	MWW	Stay	CW	YG	Marb	BF	REA	Shr	API	TI
6	3.2	75	103	0.17	11	25	62	27.2	35.2	-0.33	-0.14	-0.056	0.9	-0.33	118	67
%		10	25			25	10	2	25				30			

Maverick, a standout since birth, is a product of our own genetics. This homozygous black, homozygous polled star-faced bull is a maternal sibling to Rawhide who was purchased in our last sale by Hilltop Simmentals in South Dakota for \$9000 and is a stud at Accelerated Genetics. Maverick, a softer version of Rawhide, is sired by our ultra-fancy, high maternal herdsire, Sharp Shooter. Maverick is deep and wide with pizzazz. He's a high growth, high maternal bull who's in the top 2% for stayability. With ratios of 115 at weaning and 104 at yearling, look to hear more about him. Here's a real female producer with an amazing lifetime potential.



SVS Rawhide BXPZ - half brother





# Brown Sugar Family



SVS Sundance CWSA

SVS Brown Sugar WS8A  
- reference dam



# 7

## SVS Sundance CWSA

ASA#... 3137055

BD... 9/18/15

Tattoo... CWSA

**WS Prime Beef Z8**

*Purebred*

**SVS Brown Sugar WS8A**

WS Beef King W107

HSF Miss Sky 87U

GWS Ebonys Trademark 6N

SVS Sea Wind S87A

Adj BW **82**

Adj WW **720**

Adj YW **1250**

CE	BW	WW	YW	ADG	MCE	Milk	MWW	Stay	CW	YG	Marb	BF	REA	Shr	API	TI
11	1.1	68	102	0.21	9	21	55	21.9	31.9	-0.37	0.11	-0.044	1.08	-0.27	130	73
% 30		30	25	25			35			30			10			30

Seldom do you find a bull with as much flash and flare as Sundance. He's a natural calf of our never-fail donor, Brown Sugar, who hits it out of the park every time. He's a calving-ease bull with lots of growth and no holes EPDs. This dark cherry red, homozygous polled bull is deep, heavy muscled, wide-topped and fancy. If his daughters are anything like his dam, they will be extraordinary. Sundance should sire the kind of calves that turn heads in the pasture or showing.

# Red Silk Family



SVS Cross Roads CTP7



SVS Sugar Grove CNL8

Cott Red Silk  
- reference



# 8

## SVS Cross Roads CTP7

ASA#... 3137065

BD... 11/6/15

Tattoo... CTP7

**SVS Milestone ZSP7**

*Purebred*

**SVS Tina TP87**

SVS Humdinger TR21

SVS Sweetie SPL7

PVF-BF BF26 Black Joker

SVS Patty P87H

Adj BW **78**

Adj WW **774**

Adj YW **1184**

CE	BW	WW	YW	ADG	MCE	Milk	MWW	Stay	CW	YG	Marb	BF	REA	Shr	API	TI
5	2.4	57	77	0.12	9	28	56	26.5	19	-0.38	-0.08	-0.055	0.86	-0.31	114	59
%						10	30	3		25						

Cross Roads is one of two bulls being offered out of our new herdsire, Milestone. Milestone is an incredibly fancy, high performance Humdinger son, the only Humdinger son left. Cross Roads is a high maternal bull in the top 3% for stayability. He's homozygous polled and powerfully masculine with style. His dam is as pretty as a picture and his daughters should be the same. You can't go wrong here.

# 9

## SVS Sugar Grove CNL8

ASA#... 3137086

BD... 9/16/15

Tattoo... CNL8

**ES Black Ice SK31**

*Purebred*

**SVS Nellie NL8A**

ES Dakota NK68

ESK31

PVF-BF BF26 Black Joker

SVS Lolita

Adj BW **82**

Adj WW **793**

Adj YW **1279**

CE	BW	WW	YW	ADG	MCE	Milk	MWW	Stay	CW	YG	Marb	BF	REA	Shr	API	TI
5	3	67	104	0.23	7	22	55		36.4	-0.27	0.07	-0.06	0.69	-0.36	100	66
%		20	15						20							

Sugar Grove has a little different pedigree. This homozygous black bull is the only Black Ice son being offering. He's a performance bull who should sire exceptional calves on mature, commercial cows. Sugar Grove is long, well-balanced, has ample muscle and a touch of frame. If you want super replacement females or to maximize hybrid vigor, consider Sugar Grove.

10

## SVS Hard Cider BNL8

ASA#... 3000087

BD... 10/18/14

Tattoo... BNL8

SVS Keep Dreamin RNB1

Purebred

SVS Nellie NL8A

CNS Dream On L186

SVS Dolls Joker NB10

PVF-BF BF26 Black Joker

SVS Lolita

Adj BW 84

Adj WW 951

Adj YW 1307

CE	BW	WW	YW	ADG	MCE	Milk	MWW	Stay	CW	YG	Marb	BF	REA	Shr	API	TI
4	3.2	74	101	0.17	8	18	55	26.9	34	-0.31	-0.04	-0.051	0.85	-0.39	119	67
%		15	25					2	25						30	

Hard Cider is a true performance bull who's as long as a freight train. He has a weaning weight ratio of 124 and is in the top 2% of the breed for stayability. He's the result of crossing two phenomenal cow families...Doll and Silk. Use him on mature purebred or commercial cows to sire excellent replacements and calves that deliver a big pay day.



SVS Hard Cider BNL8

Cott Kelby Family

11

## SVS Black Hills CYW9

ASA#... 3137035

BD... 9/27/15

Tattoo... CYW9

Mr NLC Upgrade U8676

Purebred

SVS Celest YW19

Ellingson Legacy M229

Ms NLC Mojo S6119 B

SVS Reload WPF7

SVS Cats Meow WS19

Adj BW 87

Adj WW 773

Adj YW 1454

CE	BW	WW	YW	ADG	MCE	Milk	MWW	Stay	CW	YG	Marb	BF	REA	Shr	API	TI
7	3.3	81	122	0.25	8	20	61	20.6	46.7	-0.4	0.29	-0.082	1.05	-0.24	135	82
%		3	3	5			10		3	20	20	10	10		25	3

Black Hills is a tremendously powerful bull who's wide-topped, deep-quartered and packed with performance. With 11 EPDs in the top 25% of the breed, this homozygous black bull is special. Out of the same cow family as Snickerdoodle and Sandy who produced Genex's sire, SVS Kingpin YU09, Black Hills is bred to produce winners.



SVS Black Hills CYW9



Cott Kelby- reference

12

## SVS Profiteer CANB

ASA#... 3137018

BD... 10/2/15

Tattoo... CANB

Mr Ishee Catalyst

Purebred

SVS Enchantress AN9B

Ellingson Legacy M229

Ishee Ms Blk Sapphire

SVS Stinger XSPZ

SVS Kelbys Blaze N19B

Adj BW 85

Adj WW 700

Adj YW 1188

CE	BW	WW	YW	ADG	MCE	Milk	MWW	Stay	CW	YG	Marb	BF	REA	Shr	API	TI
10	2.1	63	85	0.14	11	24	56	19.9	23.3	-0.4	0.28	-0.06	0.95	-0.27	128	73
%						25	30	30		20	20		25			30

Profiteer is the only Catalyst son to be offered. He has 7 EPDs in the top 30% of the breed and is homozygous black. This moderate, well-muscled, wide-topped bull is out of a first calf heifer. He's loaded with eye-appeal and is put together right. He'll have many friends on sale day.



SVS Profiteer CANB





SVS Marksman CN9C

# 13

## SVS Marksman CN9C

ASA#... 3137088

BD... 11/2/15

Tattoo... CN9C

**SVS Sharp Shooter XPL7**

*Purebred*

**SVS Kelbys Fire N19C**

SVS Keep Dreamin RNB1

SVS Pansy PLF7

Hart Back Fire J283

Cott Kelby 019K

Adj BW **80**

Adj WW **741**

Adj YW **1308**

CE	BW	WW	YW	ADG	MCE	Milk	MWW	Stay	CW	YG	Marb	BF	REA	Shr	API	TI
5	3.5	67	91	0.15	12	25	59	24.4	28.4	-0.3	-0.07	-0.056	0.74	-0.33	110	63
%		30			20	25	20	15								

Here's a good looking, high performance, high maternal bull. Marksman tracks well, has a nice profile, and is stylish, moderate and deep. Use him on mature cows, commercial or purebred, to sire calves that push the scales. Bulls of this caliber backed by these rock solid genetics are hard to find.



SVS Franklin CSN9

# 14

## SVS Franklin CSN9

ASA#... 3088350

BD... 6/2/15

Tattoo... CSN9

**SVS Shenandoah ZWNA**

*Purebred*

**SVS Scarborough SN9B**

Ellingson Legacy M229

SVS Lady Bug WNBA

PVF-BF BF26 Black Joker

SVS Kelbys Blaze N19B

Adj BW **84**

Adj WW **890**

Adj YW **1349**

CE	BW	WW	YW	ADG	MCE	Milk	MWW	Stay	CW	YG	Marb	BF	REA	Shr	API	TI
7	1.6	65	94	0.18	10	24	57	26.6	28.2	-0.39	-0.04	-0.065	0.93	-0.27	124	66
%						30	25	3		25			25			

Franklin is a thick, deep, wide-topped, powerful bull packed with muscle. This homozygous black bull excels in maternal ability, being in the top 3% for stayability and has tremendous growth, with an adjusted weaning weight of 890 pounds. Offspring from the Kelby cow family are hard to beat and adding Shenandoah to the mix should produce phenomenal calves.



SVS Path Finder CANC

# 15

## SVS Path Finder CANC

ASA#... 3137017

BD... 10/1/15

Tattoo... CANC

**ASR Augustus Z2165**

*Purebred*

**SVS Prairie Wind AN9C**

RCR Augustus R54

ASR Ms Jordan W916

SVS Stinger XSPZ

SVS Kelbys Fire N19C

Adj BW **89**

Adj WW **736**

Adj YW **1245**

CE	BW	WW	YW	ADG	MCE	Milk	MWW	Stay	CW	YG	Marb	BF	REA	Shr	API	TI
10	2.3	60	85	0.16	9	19	49	22.3	23.7	-0.33	0.14	-0.049	0.81	-0.35	125	66
%																

Here's a fancy, homozygous black, Augustus son from the well-known Willie Altenburg herd in Colorado. This balanced EPD bull has flash and flare. His dam, a first calf heifer, has definitely earned a home in this herd....wow!!! Path Finder is moderate, smooth, thick-quartered, wide-topped and moves with ease. Here's one to watch.



# 16

## SVS Fire Water BS19

ASA#... 3000108

BD... 11/9/14

Tattoo... BS19

SVS Keep Dreamin RNB1

Purebred

SVS Sarah S19K

CNS Dream On L186

SVS Dolls Joker NB10

Black Irish Kansas

Cott Kelby 019K

Adj BW 80

Adj WW 764

Adj YW 1162

CE	BW	WW	YW	ADG	MCE	Milk	MWW	Stay	CW	YG	Marb	BF	REA	Shr	API	TI
8	2.2	65	91	0.16	12	18	50	24.9	26.8	-0.29	0.01	-0.054	0.68	-0.39	122	65
%					20			10						30		

Fire Water, out of one of our best cow families, is a deep cherry red, black-nosed bull with dark highlights. He's a maternal sib to our tremendous Lily donor and his dam is a full-sib to Snickerdoodle's dam. He's long and powerful, has a calm disposition, and his sire is known for producing fancy females. Fire Water has exceptional stayability and solid EPDs. Use him to sire outstanding, growthy calves and beautiful replacement females with excellent longevity.



SVS Fire Water BS19

# 17

## SVS High Road BZ9C

ASA#... 3000090

BD... 12/27/14

Tattoo... BZ9C

SVS Shenandoah ZWNA

Purebred

SVS Nightshade ZX9C

Ellingson Legacy M229

SVS Lady Bug WNBA

SVS Sharp Shooter XPL7

SVS Silky Smooth XN9C

Adj BW 86

Adj WW 853

Adj YW 1215

CE	BW	WW	YW	ADG	MCE	Milk	MWW	Stay	CW	YG	Marb	BF	REA	Shr	API	TI
10	2.1	68	99	0.2	12	21	55	25	31.8	-0.36	0.05	-0.064	0.9	-0.32	130	70
%					30	30	30	20		10			30			

High Road is a homozygous black, moderate-frame bull sired by our fancy, female-producing herdsire, Shenandoah. With solid EPDs, this bull excels in growth and maternal ability. High Road is extremely thick, deep and stylish. He's backed by incredibly productive cow families. This bull should take your herd to new heights.



SVS High Road BZ9C

## Black Ruby Family

# 18

## SVS Ambition CRF7

ASA#... 3137080

BD... 10/25/15

Tattoo... CRF7

PVF Insight 0129

SimAngus

SVS Rubalina RFB7

S A V Brilliance 8077

PVF Missie 790

BF K030 Red Snapper

SVS Ruby Red

Adj BW 74

Adj WW 601

Adj YW 1293

CE	BW	WW	YW	ADG	MCE	Milk	MWW	Stay	CW	YG	Marb	BF	REA	Shr	API	TI
12	1.7	73	117	0.28	10	33	69		42.3	-0.29	0.26	-0.054	0.86		129	75
%					10	10	10	20	1	1	10		20			25

Ambition is a long, smooth SimAngus™ bull. He's pretty profiling, free-moving, upheaded and strong-topped with a calm demeanor. He's a calving ease, high growth, high maternal bull with a maternal weaning weight in the top 1% of the breed. Backed by outcross genetics, this versatile bull can be used to improve genetics in many ways. CRF7 is P/S and a twin.



SVS Ambition CRF7



SVS Banjo CRFB

# 19

## SVS Banjo CRFB

ASA#... 3137079

BD... 10/25/15

Tattoo... CRFB

PVF Insight 0129

*SimAngus*

SVS Rubalina RFB7

S A V Brilliance 8077

PVF Missie 790

BF K030 Red Snapper

SVS Ruby Red

Adj BW **70**

Adj WW **527**

Adj YW **1292**

CE	BW	WW	YW	ADG	MCE	Milk	MWW	Stay	CW	YG	Marb	BF	REA	Shr	API	TI
12	1.7	73	117	0.28	10	33	69		42.3	-0.29	0.26	-0.054	0.86		129	75
%		10	10	10	20	1	1		10				20			25

I've always wanted to name a bull Banjo. With outcross genetics, this SimAngus™ bull, is soft and deep with a puppy dog disposition. He excels in calving ease, growth and maternal traits and has a maternal weaning weight in the top 1%. He should sire outstanding replacement females that milk their hearts out and calves with hybrid vigor that really grow. CRFB is a twin.



SVS Payload CUR7

# 20

## SVS Payload CUR7

ASA#... 2994669

BD... 3/10/15

Tattoo... CUR7

SVS Stinger XSPZ

*Purebred*

SVS Irish Mama URF7

SRS Right-On 22R

SVS Sabrina SPKZ

Black Irish Kansas

SVS Rubalina RFB7

Adj BW **75**

Adj WW **812**

Adj YW **1261**

CE	BW	WW	YW	ADG	MCE	Milk	MWW	Stay	CW	YG	Marb	BF	REA	Shr	API	TI
10	2	72	109	0.23	12	25	62	22.4	37.4	-0.25	0.08	-0.066	0.59	-0.26	128	73
%		15	15	15	20	20	10		15							30

Power and performance aptly describe this blaze-faced sire. With 8 EPDs in the top 30% of the breed, Payload excels in both growth and maternal ability. He displays heavy muscle, spring of rib and a square hip in an eye-appealing package. Payload should be an asset to any herd and he's built to last.

## Pansy Family



SVS Old Henry CPL7

# 21

## SVS Old Henry CPL7

ASA#... 3137084

BD... 11/27/15

Tattoo... CPL7

SVS Stinger XSPZ

*Purebred*

SVS Pansy PLF7

SRS Right-On 22R

SVS Sabrina SPKZ

PVF-BF BF26 Black Joker

SVS Black Ruby LB7B

Adj BW **82**

Adj WW **765**

Adj YW **1449**

CE	BW	WW	YW	ADG	MCE	Milk	MWW	Stay	CW	YG	Marb	BF	REA	Shr	API	TI
6	3.6	75	120	0.28	9	29	66	23.6	46.9	-0.22	-0.01	-0.053	0.73	-0.24	120	71
%		10	3	2		10	2	20	3							

Old Henry is the natural calf of our donor, Pansy, who's proven herself a top performer for 12 years. He's a high growth, high maternal bull for use on mature purebred or commercial cows. His ratios at weaning and yearling of 106 and 117, respectively, are impressive. Old Henry is homozygous black, long, deep and wide with style. Performance is built into his pedigree and his daughters should be keepers. If you're in the cattle business for the long haul, seriously consider Old Henry.



# 22

## SVS Ozark CUS7

ASA#... 3137059

BD... 11/6/15

Tattoo... CUS7

**SVS Stinger XSPZ**

*Purebred*

**SVS Lullaby USP7**

SRS Right-On 22R

SVS Sabrina SPKZ

SVS Keep Dreamin RNB1

SVS Sweetie SPL7

Adj BW **78**

Adj WW **661**

Adj YW **1071**

CE	BW	WW	YW	ADG	MCE	Milk	MWW	Stay	CW	YG	Marb	BF	REA	Shr	API	TI
9	2	54	70	0.1	10	23	50	26	14.3	-0.34	0.09	-0.052	0.71	-0.35	125	62

%

4

Here's a homozygous black Stinger son with solid EPDs and a stayability in the top 4% of the breed. Ozark definitely has "the look" with a square hip, heavy quarter, clean front and big ears. Use him on commercial or purebred cows to reduce frame and sire calves that excel. Backed by an extremely maternal cow family, his daughters should be the keepin' kind.



SVS Ozark CUS7

# 23

## SVS Marshall CS33

ASA#... 3137063

BD... 11/24/15

Tattoo... CS33

**SVS Milestone ZSP7**

*Purebred*

**SVS Serendipity SN33**

SVS Humdinger TR21

SVS Sweetie SPL7

BF K065 Talladega

SVS Black Snap-Crackle-P

Adj BW **78**

Adj WW **749**

Adj YW **1236**

CE	BW	WW	YW	ADG	MCE	Milk	MWW	Stay	CW	YG	Marb	BF	REA	Shr	API	TI
8	3.1	68	92	0.15	8	21	55	22.4	28.6	-0.33	0	-0.08	0.63	-0.42	116	66

% 30

10

25

Talk about pizzazz! Marshall is a flashy, blaze-faced Milestone son, one of only two being offered and he's got his maternal grandsire, Humdinger, stamped all over him. Marshall is a balanced EPD growth bull for use on mature cows. This homozygous black bull has a wide top and heavy muscle in a beautifully balanced moderate frame. Wanna sire club calves? Here's the bull for you. Be the first to own these new genetics.



SVS Marshall CS33

# 24

## SVS High Five CYU7

ASA#... 3088347

BD... 3/10/15

Tattoo... CYU7

**SVS Victory ZL7E**

*Purebred*

**SVS Mountain Music YUS7**

SRS Right-On 22R

SVS Black Ruby LB7B

SRS Right-On 22R

SVS Lullaby USP7

Adj BW **77**

Adj WW **755**

Adj YW **1180**

CE	BW	WW	YW	ADG	MCE	Milk	MWW	Stay	CW	YG	Marb	BF	REA	Shr	API	TI
12	0.3	54	82	0.17	12	27	54	21.9	19.3	-0.28	0.17	-0.049	0.59	-0.25	130	67

% 20

20

15

Here's a calving ease, high maternal bull backed by Black Ruby genetics. High Five is a high volume bull with solid EPDs, plenty of muscle and a quiet disposition. Use him on heifers or cows to slightly reduce frame and sire the right kind of daughters and calves that perform. Using High Five is a sure fire way to add predictable performance to your herd.



SVS High Five CYU7

# What A Doll Family



SVS Chick Magnet CWMB



SVS What A Doll MB10  
- reference granddam



SVS Twister CXMB

## 25 SVS Chick Magnet CWMB

ASA#... 3137056

BD... 9/17/15

Tattoo... CWMB

Mr NLC Upgrade U8676

Purebred

SVS Delilah WMBB

Ellingson Legacy M229

Ms NLC Mojo S6119 B

Adj BW 78

Circle S Leachman 600U

Adj WW 803

SVS What A Doll MB10

Adj YW 1393

CE	BW	WW	YW	ADG	MCE	Milk	MWW	Stay	CW	YG	Marb	BF	REA	Shr	API	TI
6	2.7	79	126	0.3	7	21	60	21.2	49	-0.42	0.21	-0.078	1.19	-0.3	132	80
%		4	1	1			10	2	15		20	2		30	5	

What a looker! Chick Magnet has abundant muscle with impressive length in a clean, free-moving, stylish frame. With ratios of 103, 105 and 112 at birth, weaning and yearling, respectively, he's a performance bull. Use him on mature cows to improve growth and carcass traits. Chick Magnet is a homozygous black, blaze-faced bull that anyone should be proud to own. The Doll family hits a home-run again!

## 26 SVS Twister CXMB

ASA#... 3137044

BD... 11/9/15

Tattoo... CXMB

SVS Reload WPF7

Purebred

SVS New Dawn XMBB

SRS Right-On 22R

SVS Ruby Black PF7A

Adj BW 77

Ellingson Legacy M229

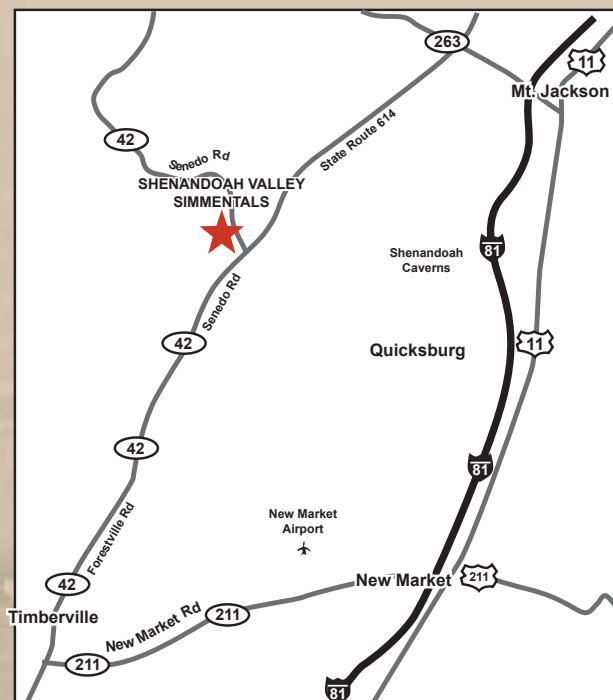
Adj WW 705

SVS What A Doll MB10

Adj YW 1206

CE	BW	WW	YW	ADG	MCE	Milk	MWW	Stay	CW	YG	Marb	BF	REA	Shr	API	TI
9	2.4	63	94	0.19	10	25	56	20.8	29.4	-0.34	0.07	-0.06	0.83	-0.29	119	67
%						25	30									

Twister is the only Reload son being offered, and a good one he is! Unfortunately, Reload, our phenomenal powerhouse sire, is no longer with us, but the mark he left on our herd will remain for years to come. Twister is a homozygous black, blaze-face bull with a nice profile, long side, square hip and heavy quarter. With across the board solid EPDs use Twister to sire calves with power and performance.



### Location

Shenandoah Valley Simmentals  
3691 S. Middle Rd.  
Quicksburg, VA 22847  
540-335-1885

### Directions

From the North

From I-81 S take Mt. Jackson Exit # 273.  
Turn RIGHT off the ramp.  
Turn LEFT on S. Middle Rd.  
Proceed through the next stop sign to a 4-way stop at Forestville.  
Go straight through the intersection onto Rt. 42 South (Senedo Rd.).  
Go approx. 0.3 mile and turn RIGHT on South Middle Rd.  
Farm is second lane on the RIGHT. (approx. 6 miles from interstate)

From the South:

From I-81 N take New Market Exit # 264.  
Turn LEFT off the ramp onto Rt. 211 West.  
Turn RIGHT at the stoplight at Timberville onto Rt. 42 North (Senedo Rd.).  
Turn LEFT on South Middle Rd.  
Farm is second lane on the RIGHT. (approx. 9 miles from interstate)



## 27

### SVS Cheyenne CYRB

ASA#... 3137041

BD... 10/30/15

Tattoo... CYRB

CLRS After Shock 604 A

Purebred

SVS Crimson Clover YRBG

Hook's Yellowstone 97Y

Hooks Sarita 4S

SRS Right-On 22R

SVS Regina RBG1

Adj BW 82

Adj WW 725

Adj YW 1271

CE	BW	WW	YW	ADG	MCE	Milk	MWW	Stay	CW	YG	Marb	BF	REA	Shr	API	TI
13	0.3	62	97	0.22	12	23	53		28.3	-0.31	0.28	-0.043	0.84	-0.41	143	74
% 15	20			20	15						20			25	15	25

This homozygous black After Shock son is stout. With balanced EPDs, this calving-ease, low birth weight bull can be used on heifers or cows. He possesses tremendous volume, muscle and length in a powerful, wide-topped frame. His calves should be standouts in any pasture. Here's a real bull in the making.



SVS Cheyenne CYRB

## 28

### SVS First Class CXU1

ASA#... 3137052

BD... 10/3/15

Tattoo... CXU1

SRS Right-On 22R

Purebred

SVS Mountain Laurel XUL1

SRS J914 Preferred Beef

SRS G720 Gillian

CNS Dream On L186

SVS Abrosia UL1A

Adj BW 81

Adj WW 771

Adj YW 1227

CE	BW	WW	YW	ADG	MCE	Milk	MWW	Stay	CW	YG	Marb	BF	REA	Shr	API	TI
10	2.6	64	100	0.23	9	18	50	22.1	33.7	-0.26	0.24	-0.051	0.71	-0.35	133	71
%		30	15						25		30				30	

This Right-On son has an API of 133 with balanced EPDs. Use First Class to improve growth. He exhibits muscle expression in a long, moderate frame. He travels freely and should sire calves when used on commercial or purebred cows that pay the bills.



PVF-BF BG10 Doll BE22  
- reference granddam



SVS First Class CXU1

## 29

### SVS Switchblade BUL1

ASA#... 3000019

BD... 12/17/14

Tattoo... BUL1

SVS Snap Shot UN33

Purebred

SVS Abrosia UL1A

SRS Right-On 22R

SVS Black Cnap-Crackle-P

KenCo/MF Powerline 204L

SVS Loralie

Adj BW 84

Adj WW 758

Adj YW 1360

CE	BW	WW	YW	ADG	MCE	Milk	MWW	Stay	CW	YG	Marb	BF	REA	Shr	API	TI
6	3.2	69	108	0.23	8	22	57	20	39	-0.27	0.08	-0.059	0.72	-0.48	115	69
%		25	15	10			25		15		30			10		

Here's a long, smooth herdsire with an exceptional disposition. Being from this cow family, he's loaded with performance and should sire top end calves on purebred or commercial cows. These are outstanding genetics.



SVS Switchblade BUL1

# Theresa Family



SVS All Aboard CWT7



SVS Theresa TNF7  
- reference granddam



SVS Mountaineer CTN7

# Black Vanessa Family



SVS No Limits CZU2

## 30

## SVS All Aboard CWT7

ASA#... 3137057

BD... 10/1/15

Tattoo... CWT7

**WS All-Around Z35**

*Purebred*

**SVS Dream Away WTN7**

WS Beef King W107

CDI Ms High Roller 39W

CNS Dream On L186

SVS Theresa TNF7

Adj BW **82**

Adj WW **695**

Adj YW **1199**

CE	BW	WW	YW	ADG	MCE	Milk	MWW	Stay	CW	YG	Marb	BF	REA	Shr	API	TI
14	1.1	67	95	0.17	13	22	56	25.8	27.4	-0.29	0.28	-0.04	0.79	-0.4	149	76
% 10					10		30	5			20			30	10	15

All Aboard boasts an API of 149 and has 8 EPDs in the top 30% of the breed. This calving-ease sire has ample growth, maternal ability and exceptional stayability. He's powerful, heavy-muscled, stylish and moderate. This homozygous black bull is going to be one to write home about. Use him in many ways to sire top dollar calves that demand attention.

## 31

## SVS Mountaineer CTN7

ASA#... 3137066

BD... 9/20/15

Tattoo... CTN7

**WS All-Around Z35**

*Purebred*

**SVS Theresa TNF7**

WS Beef King W107

CDI Ms High Roller 39W

KenCo/MF Powerline 204L

SVS Natasha NFW7

Adj BW **84**

Adj WW **794**

Adj YW **1281**

CE	BW	WW	YW	ADG	MCE	Milk	MWW	Stay	CW	YG	Marb	BF	REA	Shr	API	TI
9	2.7	74	108	0.21	11	24	61	21.7	37.6	-0.27	0.17	-0.043	0.83	-0.35	129	75
%		10	15	25	30	30	10		15							20

Everybody loves a mountaineer! Here's a long, heavy-muscled bull with a touch of frame. He's a high growth, high maternal bull with great genetics behind him and a drop dead gorgeous dam. Use him on purebred or commercial cows to produce calves with rapid growth and females that deserve a top spot in any herd

## 32

## SVS No Limits CZU2

ASA#... 3137025

BD... 9/28/15

Tattoo... CZU2

**WS All-Around Z35**

*Purebred*

**SVS Square Dance ZUR2**

WS Beef King W107

CDI Ms High Roller 39W

SVF Star Player T801

SVS Fat And Sassy URH2

Adj BW **86**

Adj WW **698**

Adj YW **1269**

CE	BW	WW	YW	ADG	MCE	Milk	MWW	Stay	CW	YG	Marb	BF	REA	Shr	API	TI
12	1.3	68	110	0.26	13	25	59	24.3	37.7	-0.24	0.26	-0.039	0.78	-0.52	146	77
% 20		30	10	4	10	25	15	15	15		25			10	10	15

Want unlimited performance? No Limits has 13 EPDs in the top 30% of the breed. He's possesses a rare combination of calving ease, high growth and maternal traits, as well as exceptional carcass merit. He's moderate, heavy-muscled and strong-topped with high capacity and eye-appeal. Use this bull in many ways to improve your herd. The sky is the limit with No Limits.



33

## SVS Liberty CUR2

ASA#... 3137058

BD... 9/23/15

Tattoo... CUR2

Mr NLC Upgrade U8676

Purebred

SVS Fat And Sassy URH2

Ellingson Legacy M229

Ms NLC Mojo S6119 B

SVS Keep Dreamin RNB1

SVS Big Time RH2B

Adj BW 80

Adj WW 782

Adj YW 1263

CE	BW	WW	YW	ADG	MCE	Milk	MWW	Stay	CW	YG	Marb	BF	REA	Shr	API	TI
7	2.2	76	108	0.2	9	15	53	21.3	36.6	-0.48	0.19	-0.089	1.11	-0.28	129	77
%		10	15	30				20	3		10	5				15

Here's the bull to sire high performance calves that excel in carcass merit. This thick, soggy, moderate bull has loads of style too. His dam is a beautiful Keep Dreamin' daughter who always produces the right kind. Liberty is homozygous black and homozygous good! You can't go wrong with these genetics.



SVS Liberty CUR2

34

## SVS Black Widow CSHB

ASA#... 3137073

BD... 9/23/15

Tattoo... CSHB

Mr NLC Upgrade U8676

Purebred

SVS Sherry SH2B

Ellingson Legacy M229

Ms NLC Mojo S6119 B

PVF-BF BF26 Black Joker

SVS Black Vanessa

Adj BW 82

Adj WW 877

Adj YW 1383

CE	BW	WW	YW	ADG	MCE	Milk	MWW	Stay	CW	YG	Marb	BF	REA	Shr	API	TI
3	3.2	80	121	0.26	6	24	64	20.4	46.4	-0.43	0.11	-0.079	1.17	-0.22	119	77
%		3	3	4		30	4	3	10		20	3				15

This Upgrade son has EPDs through the roof, with 10 in the top 30% of the breed, and a weaning weight ratio of 115 and a yearling of 111. Black Widow is equally impressive phenotypically. He's long, deep, strong-topped and moves well. Use him on mature cows to produce beautiful replacements and growthy calves that excel in carcass traits. "Performance" is his middle name.



SVS Black Widow CSHB

35

## SVS Typhoon CZSA

ASA#... 3088356

BD... 3/5/15

Tattoo... CZSA

V A R Reserve 1111

SimAngus

SVS Calico ZSHA

B/R New Day 454

Sandpoint Blackbird 8809

SVS Keep Dreamin RNB1

SVS Scarlett SH2A

Adj BW 80

Adj WW 686

Adj YW 1173

CE	BW	WW	YW	ADG	MCE	Milk	MWW	Stay	CW	YG	Marb	BF	REA	Shr	API	TI
11	-0.2	50	81	0.19	9	30	55		18.3	-0.4	0.5	-0.046	0.99		133	70
%					30	4	30			15	25		10			

Typhoon is one of the few SimAngus™ bulls in this offering. This homozygous black calving ease, high maternal bull also excels in carcass merit. He's deep, thick and soft with plenty of muscle and a clean front in a slightly smaller frame. Use him on heifers or cows to sire calves that always bring top dollar. With an API of 133, Typhoon can be used successfully in many ways.



SVS Typhoon CZSA



SVS Bobcat CWSB

# 36

## SVS Bobcat CWSB

ASA#... 3088368

BD... 6/8/15

Tattoo... CWSB

SVS Shenandoah ZWNA

Purebred

SVS Right Kind WSHB

Ellingson Legacy M229

SVS Lady Bug WNBA

SRS Right-On 22R

SVS Sherry SH2B

Adj BW 84

Adj WW 775

Adj YW 1204

CE	BW	WW	YW	ADG	MCE	Milk	MWW	Stay	CW	YG	Marb	BF	REA	Shr	API	TI
10	1.1	55	78	0.15	10	24	51	26	18	-0.4	0.07	-0.061	0.86	-0.35	130	64
%						30		4		20		35			35	

Bobcat is a homozygous black, calving ease bull who excels in maternal ability and longevity. He combines length and smooth lines in a little smaller frame. His dam is an eye-catching, ultra-feminine Right-On daughter. Use him to sire calves that grow and females that should be the right kind, excelling in your herd for many years.

## Red Sunset Family



SVS Arrow Head CJZ2

# 37

## SVS Arrow Head CJZ2

ASA#... 3088332

BD... 3/19/15

Tattoo... CJZ2

SVS Shenandoah ZWNA

Purebred

SVS Red Sunset

Ellingson Legacy M229

SVS Lady Bug WNBA

BOZ Redcat D162

SVS Duchess

Adj BW 76

Adj WW 845

Adj YW 1282

CE	BW	WW	YW	ADG	MCE	Milk	MWW	Stay	CW	YG	Marb	BF	REA	Shr	API	TI
10	0.5	57	82	0.15	9	28	56	19.8	19.3	-0.4	-0.06	-0.074	0.79	-0.09	112	63
%	25					10	30			20		20				

Arrow Head is a natural calf of Red Sunset. He's smooth and long-strided in a slightly larger frame. With ample muscle, this calving-ease sire should be an exceptional female-producer with tremendous longevity. Use his outcross genetics on commercial or purebred heifers or cows to produce calves that anyone should be proud to own.



SVS Sandstone BZJ2

# 38

## SVS Sandstone BZJ2

ASA#... 3000026

BD... 10/9/14

Tattoo... BZJ2

WS Beef Maker R13

Purebred

SVS Ginger ZJZ2

Hooks Shear Force 38K

DCR Ms Ribeye N72

SVS Keep Dreamin RNB1

SVS Red Sunset

Adj BW 90

Adj WW 704

Adj YW 1120

CE	BW	WW	YW	ADG	MCE	Milk	MWW	Stay	CW	YG	Marb	BF	REA	Shr	API	TI
10	2.5	68	94	0.16	11	25	59	21.2	28.8	-0.39	0.3	-0.057	1	-0.35	134	76
%		30				30	25	15		25	20		15		25	15

Sandstone is an ultra-masculine, moderate bull with eye-appeal galore. This cherry red, high volume, wide-topped crowd pleaser is out of a beautiful first calf heifer and is a maternal grandson of our Red Sunset donor, who at 17 is still raising amazing natural calves. Sandstone excels in maternal and carcass traits. Beef Maker semen is hard to find and his sons are in great demand. Sandstone should have plenty of friends on sale day.



# 39

## SVS Gold Rush CSJ2

ASA#... 3137072

BD... 11/11/15

Tattoo... CSJ2

**SVS Sharp Shooter XPL7**

*Purebred*

**SVS Sally SJZ2**

SVS Keep Dreamin RNB1

SVS Pansy PLF7

BF K065 Talladega

SVS Red Sunset

Adj BW **78**

Adj WW **712**

Adj YW **1291**

CE	BW	WW	YW	ADG	MCE	Milk	MWW	Stay	CW	YG	Marb	BF	REA	Shr	API	TI
8	2.2	66	92	0.16	8	22	55	23.6	27.8	-0.35	-0.12	-0.074	0.74	-0.26	113	64
%				35				20				20				

Gold Rush is a solid red bull sired by our fancy Sharp Shooter herdsire and is out of a "beauty-gorgeous" Talladega daughter. He's long, extremely smooth and has eye-appeal. Gold Rush should sire fancy, functional daughters and calves that excel in any arena. These time-tested, top end genetics are hard to find and even harder to beat.



SVS Gold Rush CSJ2

# 40

## SVS Redneck Crazy BSJ2

ASA#... 3000034

BD... 11/23/14

Tattoo... BSJ2

**SVS Keep Dreamin RNB1**

*Purebred*

**SVS Sally SJZ2**

CNS Dream On L186

SVS Dolls Joker NB10

BF K065 Talladega

SVS Red Sunset

Adj BW **79**

Adj WW **680**

Adj YW **1072**

CE	BW	WW	YW	ADG	MCE	Milk	MWW	Stay	CW	YG	Marb	BF	REA	Shr	API	TI
9	1.4	55	68	0.08	8	18	45	21.4	11.7	-0.4	-0.06	-0.072	0.7	-0.33	109	59
%								20				20				

Hope you like this name as much as this bull! Redneck Crazy is a moderate, thick, soggy, clean-lined bull out of a beautifully feminine Talladega daughter. This low birth weight, free-moving bull should sire exceptional calves, especially in a cross-breeding program. Redneck Crazy's daughters should be "keepers" and his sons should rock the boat on sale day.



SVS Redneck Crazy BSJ2

# 41

## SVS Honky Tonk CT35

ASA#... 3137064

BD... 11/18/15

Tattoo... CT35

**SVS Stinger XSPZ**

*Purebred*

**SVS Tiffany TJ35**

SRS Right-On 22R

SVS Sabrina SPKZ

BF K065 Talladega

SVS Cardinal

Adj BW **78**

Adj WW **714**

Adj YW **1183**

CE	BW	WW	YW	ADG	MCE	Milk	MWW	Stay	CW	YG	Marb	BF	REA	Shr	API	TI
8	2.7	62	85	0.15	8	25	56	21.2	24.2	-0.33	0.05	-0.08	0.56	-0.29	115	65
%						20	30					10				

Honky Tonk is a balanced EPD bull who excels in maternal traits. He's a nice profiling, long-sided, free-moving Right-On son with ample muscle. Use him on purebred or commercial cows to produce crossbred calves and reap the benefits of hybrid vigor on sale day.



SVS Honky Tonk CT35

*Cardinal Family*



SVS Black Top CZX5

# 42

## SVS Black Top CZX5

ASA#... 3088376

BD... 2/19/15

Tattoo... CZX5

**Dikemans Sure Bet**

*Purebred*

**SVS Rosetta ZX35**

TJ 57J The Gambler

Megan 9M

SVS Sharp Shooter XPL7

SVS Jasmine XJ35

Adj BW **90**

Adj WW **785**

Adj YW **1168**

CE	BW	WW	YW	ADG	MCE	Milk	MWW	Stay	CW	YG	Marb	BF	REA	Shr	API	TI
9	2.1	69	97	0.18	11	19	54	20.8	30.6	-0.4	0.26	-0.059	1.02	-0.6	131	75
% 25		30		20		25		15		2		30		20		

Black Top has impressive EPDs, excelling in growth and carcass merit. This long, smooth bull is one of only a few being offered with Humdinger in his pedigree. Humdinger genetics are powerful, and few and far between. Use Black Top on purebred or commercial cows to produce top end calves with performance and style.



SVS Jake Brake CX35

# 43

## SVS Jake Brake CX35

ASA#... 3137049

BD... 11/22/15

Tattoo... CX35

**SVS Stinger XSPZ**

*Purebred*

**SVS Jasmine XJ35**

SRS Right-On 22R

SVS Sabrina SPKZ

SVS Humdinger TR21

SVS Cardinal

Adj BW **85**

Adj WW **676**

Adj YW **1287**

CE	BW	WW	YW	ADG	MCE	Milk	MWW	Stay	CW	YG	Marb	BF	REA	Shr	API	TI
9	3.1	64	97	0.21	9	28	60	21.3	32.2	-0.28	0.09	-0.066	0.63	-0.3	119	67
% 25				10		15		30								

Jake Brake is a high maternal baldy bull with plenty of growth and volume in a smooth, stylish package. Use him on commercial Angus cows to produce those F1 cross calves with blaze faces that are so popular in today's market. This Humdinger grandson should sire exceptional replacements and calves that should top the market on sale day.

## Jokers Darlin Family



SVS Abilene CRM8

# 44

## SVS Abilene CRM8

ASA#... 3137075

BD... 9/27/15

Tattoo... CRM8

**Gibbs 2654Z Bullet Proof**

*Purebred*

**SVS Ramona RMK8**

Mr NLC Upgrade U8676

WDG Ms P342

BF K065 Talladega

SVS Jokers Darlin MKD8

Adj BW **82**

Adj WW **657**

Adj YW **1069**

CE	BW	WW	YW	ADG	MCE	Milk	MWW	Stay	CW	YG	Marb	BF	REA	Shr	API	TI
7	1.6	57	86	0.18	8	23	52		23.5	-0.4	0.2	-0.067	0.88	-0.24	115	67
%										20						

These genetics have a little different twist. Abilene is the only Bullet Proof son in this offering. This homozygous black baldy bull is out of a tremendously productive Talladega daughter. Use him on commercial cows to produce calves that really perform. Don't lose your calves in a sea of black. Use Abilene to add blazed-faces.



# 45

## SVS Montana CXT8

ASA#... 3137046

BD... 10/1/15

Tattoo... CXT8

**WS All-Around Z35**

*Purebred*

**SVS Sunny Day XTM8**

WS Beef King W107  
CDI Ms High Roller 39W  
Ellingson Legacy M229  
SVS Twilight TMK8

Adj BW **83**  
Adj WW **890**  
Adj YW **1247**

CE	BW	WW	YW	ADG	MCE	Milk	MWW	Stay	CW	YG	Marb	BF	REA	Shr	API	TI
12	2	76	106	0.18	12	19	57	25.1	34.8	-0.31	0.24	-0.044	0.93	-0.33	145	79
% 20		10	20		20		25	10	25		30		25		10	10

Montana is one of the highest API bulls in this offering. With 11 EPDs in the top 30% this wide-spread EPD bull is versatile in use. He's a calving ease, high growth, high maternal bull with a weaning weight ratio of 117. He's long and free-moving too. Use him on purebred or commercial females to sire females that are as pretty as a picture and the right kind of cattle in demand today.



SVS Montana CXT8

# 46

## SVS Happy Hour CPM8

ASA#... 3137083

BD... 12/1/15

Tattoo... CPM8

**SVS Sharp Shooter XPL7**

*Purebred*

**SVS Party Time PMK8**

SVS Keep Dreamin RNB1  
SVS Pansy PLF7  
Hart Back Fire J283  
SVS Jokers Darlin MKD8

Adj BW **80**  
Adj WW **798**  
Adj YW **1380**

CE	BW	WW	YW	ADG	MCE	Milk	MWW	Stay	CW	YG	Marb	BF	REA	Shr	API	TI
4	2.8	74	105	0.19	14	20	57	27.6	36.2	-0.29	-0.11	-0.054	0.82	-0.22	118	67
%		10	20		4		25	1	20							

Here's a fancy standout. Happy Hour is the youngest bull in this offering. With ratios of 101, 110 and 111 for birth, weaning, and yearling weight, respectively, this bull is loaded with performance and has a maternal calving ease EPD in the top 4% and stayability in the top 1%. He's homozygous black, soft, big-eared and soggy with impressive style. Use Happy Hour on mature cows to produce front pasture calves and replacements to be proud of.



SVS Happy Hour CPM8

# 47

## SVS Vigilante CAP8

ASA#... 3137013

BD... 10/9/15

Tattoo... CAP8

**WS All-Around Z35**

*Purebred*

**SVS Blue Moon APM8**

WS Beef King W107  
CDI Ms High Roller 39W  
RC Club King 040R  
SVS Party Time PMK8

Adj BW **85**  
Adj WW **769**  
Adj YW **1263**

CE	BW	WW	YW	ADG	MCE	Milk	MWW	Stay	CW	YG	Marb	BF	REA	Shr	API	TI
12	1.5	76	105	0.18	14	19	57	23	34	-0.21	0.28	-0.035	0.67	-0.29	142	80
% 25		10	20		5		25	25	25		20				15	5

Vigilante is homozygous black and has super EPDs, with 10 in the top 25% of the breed. He's a widespread EPD bull combining calving ease with tremendous growth. His first calf heifer dam did a great job with him. He's moderate, deep, thick and free-moving with eye-appeal. Use this multi-purpose bull to put your herd on the map.



SVS Vigilante CAP8



SVS High Gear CRK8

# 48

## SVS High Gear CRK8

ASA#... 3137077

BD... 11/11/15

Tattoo... CRK8

**SVS Sharp Shooter XPL7**

*Purebred*

**SVS Raven RKD8**

SVS Keep Dreamin RNB1

SVS Pansy PLF7

BF K065 Talladega

SVS Karoline

Adj BW **76**

Adj WW **727**

Adj YW **1342**

CE	BW	WW	YW	ADG	MCE	Milk	MWW	Stay	CW	YG	Marb	BF	REA	Shr	API	TI
7	2.6	68	103	0.21	12	23	57	24.4	34.7	-0.32	-0.1	-0.072	0.74	-0.27	116	65
%		30	25	25	20	35	25	15	25			20				

Here's a high growth, high maternal Sharp Shooter son with balanced EPDs. He's the natural calf of our donor, Raven. High Gear has ratios of 106 at birth and 108 at yearling. He's deep and moderate with an extremely wide top. He's wrapped in a very soft, stylish package from nose to tail. Kick your herd's genetic progress into high gear right here.



SVS Advantage BTM8

# 49

## SVS Advantage BTM8

ASA#... 3000080

BD... 11/22/14

Tattoo... BTM8

**SVS Keep Dreamin RNB1**

*Purebred*

**SVS Twilight TMK8**

CNS Dream On L186

SVS Dolls Joker NB10

KenCo/MF Powerline 204L

SVS Jokers Darlin MKD8

Adj BW **81**

Adj WW **755**

Adj YW **1341**

CE	BW	WW	YW	ADG	MCE	Milk	MWW	Stay	CW	YG	Marb	BF	REA	Shr	API	TI
4	2.7	64	93	0.18	11	17	49	26.8	28.9	-0.36	-0.07	-0.046	0.99	-0.34	116	62
%					30			3					20			

Advantage is an easy-keeping, long-sided, high capacity, thick, smooth-patterned bull with a puppy dog disposition and stayability in the top 3% of the breed. His sire, Keep Dreamin', was still in use at nine years of age. That's the kind of longevity to build a herd around. Use him to your advantage on mature purebred or commercial cows to put dollars in your pocket and to produce females with exceptional longevity. This genetics are packed with performance.

## Tisha Family



SVS Snake Eyes CXTJ

# 50

## SVS Snake Eyes CXTJ

ASA#... 3137043

BD... 11/18/15

Tattoo... CXTJ

**SVS Sharp Shooter XPL7**

*Purebred*

**SVS Pumpkin XT1J**

SVS Keep Dreamin RNB1

SVS Pansy PLF7

SRS Right-On 22R

SVS Tara T12J

Adj BW **77**

Adj WW **739**

Adj YW **1127**

CE	BW	WW	YW	ADG	MCE	Milk	MWW	Stay	CW	YG	Marb	BF	REA	Shr	API	TI
9	2.5	62	78	0.1	9	20	51	25	19	-0.36	0.01	-0.06	0.77	-0.28	120	63
%								10								

Snake Eyes is a balanced EPD bull with exceptional stayability. He's a smaller frame bull with extreme capacity, ample thickness and muscle. Use him on purebred or commercial cows to sire calves that out-perform the rest.



# 51

## SVS Powder Keg CR1J

ASA#... 3137082

BD... 9/21/15

Tattoo... CR1J

CLRS After Shock 604 A

Purebred

SVS Renee R12J

Hook's Yellowstone 97Y

Hooks Sarita 4S

BF K065 Talladega

SCC Lets Tango 124J

Adj BW 88

Adj WW 809

Adj YW 1295

CE	BW	WW	YW	ADG	MCE	Milk	MWW	Stay	CW	YG	Marb	BF	REA	Shr	API	TI
8	3.2	73	107	0.21	10	23	60		37.7	-0.31	0.14	-0.064	0.82	-0.31	119	73
% 15		15	25				15		15							30

Here's one of only two Aftershock sons being offered and he's outstanding! Powder Keg is an explosive growth bull out of a beautiful Talladega cow who only produces winners. He's a complete package, with extreme depth and width, style and performance. Use this balanced EPD bull on mature cows to produce top end calves that excel in any arena.



SVS Power Keg CR1J

# 52

## SVS Voyager CZXJ

ASA#... 3137029

BD... 11/11/15

Tattoo... CZXJ

SVS Bell Ringer ANL3

Purebred

SVS Kachina ZXTJ

Mr NLC Upgrade U8676

SVS Norrice NLJ3

SVF Star Player T801

SVS Pumpkin XT1J

Adj BW 78

Adj WW 736

Adj YW 1264

CE	BW	WW	YW	ADG	MCE	Milk	MWW	Stay	CW	YG	Marb	BF	REA	Shr	API	TI
7	2.6	69	102	0.2	8	24	59	22.6	34	-0.4	0.13	-0.073	0.98	-0.42	126	72
% 25		25	30			30	20	30	25	20		20	20	25		

Voyager is the only Bell Ringer son being offered and the first of these new genetics to sell. This homozygous black, blaze-face high growth, high maternal bull has 11 EPDs in the top 30% of the breed. He's long, smooth and clean with ample muscle, capacity and style. If you want to sire high performance calves that don't get lost in a sea of black at the market, Voyager is the bull for you.



SVS Voyager CZXJ

# 53

## SVS Lost River BT1J

ASA#... 3000099

BD... 12/24/14

Tattoo... BT1J

SVS Keep Dreamin RNB1

Purebred

SVS Tara T12J

CNS Dream On L186

SVS Dolls Joker NB10

BF K065 Talladega

SCC Lets Tango 124J

Adj BW 82

Adj WW 766

Adj YW 1269

CE	BW	WW	YW	ADG	MCE	Milk	MWW	Stay	CW	YG	Marb	BF	REA	Shr	API	TI
7	2.9	75	102	0.17	11	12	49	23.1	34.2	-0.32	-0.04	-0.072	0.73	-0.33	117	69
% 10		25			25			25	25			20				

This Keep Dreamin' son has an exceptional phenotype and excels in growth. He's easy-fleshing, wide-topped, square-hipped and very deep in a moderate package with tons of muscle expression. He's always been a top performer with ratios of 101 at birth, 104 at weaning, and 107 as a yearling. Use Lost River on mature commercial cows to reduce frame and sire flashy calves that will push the scales on sale day.



SVS Lost River BT1J

# Right As Rain Family



SVS Detonator Casa CASA

SVS Right As Rain ASOA- ref dam



## 54

## SVS Detonator CASA

ASA#... 3137011

BD... 9/26/15

Tattoo... CASA

Dikemans Sure Bet

Purebred

SVS Right As Rain ASOA

TJ 57J The Gambler

Megan 9M

Mr NLC Upgrade U8676

SVS Sandy S019

Adj BW 77

Adj WW 759

Adj YW 1180

CE	BW	WW	YW	ADG	MCE	Milk	MWW	Stay	CW	YG	Marb	BF	REA	Shr	API	TI
10	0.7	66	87	0.13	8	17	50	18.7	21.8	-0.5	0.34	-0.071	1.15	-0.55	134	77
%	30									2	15	20	4	4	30	15

Detonator is the first natural calf out of our exciting new donor, Right as Rain. This low birth weight Sure Bet son excels in carcass merit. He's extremely soggy, wide-topped and thick quartered, and has a quiet disposition. Use Detonator to reduce frame and to add first-class cow family genetics to your herd. This homozygous black bull is genetically and phenotypically designed to be a top performer.

# Molasses Family



SVS Patriot CXT7

SVS Molasses XTP7- reference dam



## 55

## SVS Patriot CXT7

ASA#... 3137045

BD... 9/20/15

Tattoo... CXT7

Mr NLC Upgrade U8676

Purebred

SVS Molasses XTP7

Ellingson Legacy M229

Ms NLC Mojo S6119 B

SVS Humdinger TR21

SVS Tina TP87

Adj BW 79

Adj WW 841

Adj YW 1349

CE	BW	WW	YW	ADG	MCE	Milk	MWW	Stay	CW	YG	Marb	BF	REA	Shr	API	TI
7	2.1	79	127.3	0.3	6	24	64	22.3	48.9	-0.46	0.17	-0.084	1.25	-0.22	134	80
%		4	1	1		30	4		2	5		10	1		25	5

Awesomely unique! In 40 years of raising Simmentals, Patriot stands head and shoulders above the rest. He's a "man's bull" with unequalled appeal and a flawless phenotype. He's the total package combining impeccable performance and EPDs, with amazing style from nose to tail. With ratios of 106 at birth, 114 at weaning, and 108 at yearling, and 10 EPDs in the top 30%, this homozygous black, homozygous polled bull is one for the records. His maternal grandsire, Humdinger, definitely left his mark on Patriot. And his dam, Molasses, is a rising star in our donor program. Bulls like Patriot are as rare. Here's the opportunity of a life time.

# Fall Bulls



SVS Prairie Dew CRLG

## 56

## SVS Prairie Dew CRLG

ASA#... 3137076

BD... 9/14/15

Tattoo... CRLG

Mr NLC Upgrade U8676

Purebred

SVS Roxanne RLG2

Ellingson Legacy M229

Ms NLC Mojo S6119 B

BF K065 Talladega

SVS Cats Meow LGC2

Adj BW 88

Adj WW 654

Adj YW 1219

CE	BW	WW	YW	ADG	MCE	Milk	MWW	Stay	CW	YG	Marb	BF	REA	Shr	API	TI
6	3.5	63	94	0.2	6	26	57	16.4	31.2	-0.51	0.16	-0.103	1.04	-0.15	110	68
%				30		15	25		35	2		1	10			

Here's the soggiest bull in this offering and a favorite of many. With impressive growth, depth and style, and balanced EPDs this bull has worlds of potential. Use this powerful, homozygous black, homozygous polled Upgrade son on mature cows to produce calves that grow like weeds and perform exceptionally well on the rail. Don't miss this opportunity to put Talladega genetics in your herd.



# 57

## SVS Bingo CY52

ASA#... 3137040

BD... 9/21/15

Tattoo... CY52

**B P F Special Focus 504**

*SimAngus*

**SVS Buttons N Bows YR52**

Mytty In Focus

B P F Black Cash 341

SRS Right-On 22R

SVS Big Town RH52

Adj BW **75**

Adj WW **710**

Adj YW **1133**

CE	BW	WW	YW	ADG	MCE	Milk	MWW	Stay	CW	YG	Marb	BF	REA	Shr	API	TI
16	0.4	56	87	0.2	11	30	58		22.7	-0.08	0.54	0.007	0.46	-0.22	151	72
% 10					15	4	20				20				15	

Bingo is the highest API bull in this offering and the only one sired by Special Focus. He's a calving ease, high maternal SimAngus™ bull who should appeal to many. This homozygous black bull displays muscle, volume and style in a smaller package. With a calving ease ratio of 107, he ranked first out of 46 calves for birth weight. Hit the jackpot with Bingo.



SVS Bingo CY52

# 58

## SVS Laramie CAR2

ASA#... 3137015

BD... 9/24/15

Tattoo... CAR2

**WS All-Around Z35**

*Purebred*

**SVS Spellbound ARK2**

WS Beef King W107

CDI Ms High Roller 39W

SRS Right-On 22R

SVS Rosanne RKC2

Adj BW **83**

Adj WW **701**

Adj YW **1251**

CE	BW	WW	YW	ADG	MCE	Milk	MWW	Stay	CW	YG	Marb	BF	REA	Shr	API	TI
13	1.1	66	95	0.18	11	25	57	22.1	28	-0.23	0.3	-0.042	0.6	-0.32	142	76
% 15	35				25	25	25				20				15	15

This All-Around son out of a first calf heifer is flashy in the pasture and on paper. With an API of 142 and 8 EPDs in the top 25% of the breed, Laramie is one to consider. He's a beautiful profiling bull with a moderate frame, high volume and tons of muscle. Laramie is a calving ease, high maternal bull that has an extremely bright future.



SVS Laramie CAR2

# 59

## SVS Power House CXRD

ASA#... 3137048

BD... 9/24/15

Tattoo... CXRD

**SRS Right-On 22R**

*Purebred*

**SVS Sapphire XRLD**

SRS J914 Preferred Beef

SRS G720 Gillian

SVS Gold Finger SLF2

SVS Roxie RLD3

Adj BW **79**

Adj WW **663**

Adj YW **1168**

CE	BW	WW	YW	ADG	MCE	Milk	MWW	Stay	CW	YG	Marb	BF	REA	Shr	API	TI
9	1.8	53	78	0.16	9	28	54	18.6	19	-0.31	0.17	-0.064	0.57	-0.26	117	64
%						10										

Power House is homozygous black and homozygous stout. He's a high milk bull out of a beautiful Gold Finger daughter. He's masculine, soggy, moderate and strong-topped. Use him to sire daughters that excel whether in purebred or commercial herds and to add growth to any set of calves.



SVS Power House CXRD



SVS Captain CAS1

**60**

## SVS Captain CAS1

ASA#... 3137012

BD... 9/30/15

Tattoo... CAS1

**Ellingson Legacy M229**

*Purebred*

**SVS Jolene AS10**

Nichols Legacy G151

Ellingson Ms Pstock K58

RC Club King 040R

SVS Senorita SF10

Adj BW **91**

Adj WW **732**

Adj YW **1298**

CE	BW	WW	YW	ADG	MCE	Milk	MWW	Stay	CW	YG	Marb	BF	REA	Shr	API	TI
12	2.4	67	105	0.24	11	22	55	17.8	36.2	-0.41	0.16	-0.09	0.89	-0.24	125	73
% 20		30	20	10	30				20	15		2				30

Here's a stout Olie son out of a first calf heifer. He's a performance bull with 9 EPDs in the top 30% of the breed. Captain is homozygous black, strong-topped, has extreme depth of quarter and rib, a flashy profile and moves with ease. There's a lot of meat and performance in this package!



SVS High Voltage CX33

**61**

## SVS High Voltage CX33

ASA#... 3137051

BD... 10/1/15

Tattoo... CX33

**SRS Right-On 22R**

*Purebred*

**SVS Solitude XN33**

SRS J914 Preferred Beef

SRS G720 Gillian

SVS Keep Dreamin RNB1

SVS Black Snap-Crackle-P

Adj BW **81**

Adj WW **787**

Adj YW **1266**

CE	BW	WW	YW	ADG	MCE	Milk	MWW	Stay	CW	YG	Marb	BF	REA	Shr	API	TI
9	3.1	67	96	0.18	10	19	52	21	31.1	-0.23	0.18	-0.05	0.58	-0.33	124	70
%																

High Voltage is a homozygous polled, high performance sire with style. With balanced EPDs, this ultra-masculine, wide-topped meat wagon has amazing performance. Use High Voltage on mature cows to produce calves that outperform the competition. He's definitely a front pasture bull.



SVS Wide Load CR13

**62**

## SVS Wide Load CR13

ASA#... 3137067

BD... 10/16/15

Tattoo... CR13

**SVS Stinger XSPZ**

*Purebred P/S*

**SVS Mama RH13**

SRS Right-On 22R

SVS Sabrina SPKZ

PVF-BF BF26 Black Joker

SVS Black Fantasia

Adj BW **76**

Adj WW **785**

Adj YW **1246**

CE	BW	WW	YW	ADG	MCE	Milk	MWW	Stay	CW	YG	Marb	BF	REA	Shr	API	TI
7	2.5	66	96	0.19	7	24	57	24.5	30.8	-0.3	0.03	-0.054	0.76	-0.26	121	67
%							30	25	15							

Powerfully impressive, Wide Load is a homozygous black son of our tremendously-muscled herdsire, Stinger, who we lost last fall. Wide Load is a no holes EPD bull who excels in maternal ability. He's very complete with a moderate frame, heavy muscle, high capacity and abundant style. His Joker dam has only produced the right kind. Use Wide Load on mature cows to sire calves that should really push the scales.



# 63 SVS Smooth Operator CYSZ

ASA#... 3137037

BD... 10/18/15

Tattoo... CYSZ

**SVS Seldom Seen AP8H**

*Purebred*

**SVS Monarch YSPZ**

SVS Snap Shot UN33

SVS Patty P87H

SVS Gold Finger SLF2

SVS Sabrina SPKZ

Adj BW **80**

Adj WW **756**

Adj YW **1295**

CE	BW	WW	YW	ADG	MCE	Milk	MWW	Stay	CW	YG	Marb	BF	REA	Shr	API	TI
7	2.9	69	106	0.24	11	26	60	20.6	37.6	-0.3	-0.05	-0.071	0.73	-0.26	111	67
%		25	20	10	30	20	15		15			20				

Smooth Operator is a high maternal, high growth Seldom Seen son, one of only two being offered. This homozygous black bull is as long as they come, strong-topped, heavy quartered and moves with ease. He's as smooth as silk and yet has "bull" written all over him. Use him on mature cows to produce calves that just plain grow. He's gonna be a good one!



SVS Smooth Operator CYSZ

# 64 SVS Twelve Gauge CAP7

ASA#... 3137014

BD... 10/23/15

Tattoo... CAP7

**SVS Shenandoah ZWNA**

*Purebred*

**SVS Bellflower APD7**

Ellingson Legacy M229

SVS Lady Bug WNBA

SRS Right-On 22R

SVS Paulette PDY7

Adj BW **83**

Adj WW **726**

Adj YW **1280**

CE	BW	WW	YW	ADG	MCE	Milk	MWW	Stay	CW	YG	Marb	BF	REA	Shr	API	TI
11	1.4	60	87	0.17	10	23	53	22.6	23.3	-0.37	0.11	-0.072	0.76	-0.28	128	68
%	30							30		30		20				

Here's another bull out of a first calf heifer. Twelve Gauge is a homozygous black, calving ease Shenandoah son with balanced EPDs. He possesses extreme volume for his moderate frame and combines heavy muscle with good looks. This is a bull neighbors will talk about.



SVS Twelve Gauge CAP7

# 65 SVS McDowell CLG2

ASA#... 3137089

BD... 10/27/15

Tattoo... CLG2

**SVS Stinger XSPZ**

*Purebred*

**SVS Cats Meow LGC2**

SRS Right-On 22R

SVS Sabrina SPKZ

TSS-BOZ Bold Cat

SVS Beauty

Adj BW **72**

Adj WW **712**

Adj YW **1148**

CE	BW	WW	YW	ADG	MCE	Milk	MWW	Stay	CW	YG	Marb	BF	REA	Shr	API	TI
7	3.4	65	95	0.19	9	33	65	16.5	31.6	-0.29	0.01	-0.067	0.64	-0.13	102	65
%						1	3									

Here's a little different pedigree with outcross genetics you won't find anywhere else. McDowell is a high maternal bull, who's in the top 1% for milk and the top 3% for maternal weaning weight. Use him on mature purebred or commercial cows to sire exceptional replacements and feeder calves that crunch the scale on sale day.



SVS McDowell CLG2



SVS Wild N Wooly CZXF

## 66 SVS Wild N Wooly CZXF

ASA#... 3137027

BD... 10/28/15

Tattoo... CZXF

**WS All-Around Z35**

*Purebred*

**SVS Milky Way ZXFA**

WS Beef King W107

CDI Ms High Roller 39W

SVS Sharp Shooter XPL7

SVS Maybelline XFWA

Adj BW **84**

Adj WW **806**

Adj YW **1255**

CE	BW	WW	YW	ADG	MCE	Milk	MWW	Stay	CW	YG	Marb	BF	REA	Shr	API	TI
13	1.1	74	100	0.17	14	24	61	23.9	30.3	-0.24	0.18	-0.034	0.74	-0.35	140	77
% 15		15	30		10	30	10	20							15	15

This widespread EPD bull has exceptional calving ease, explosive growth and high maternal ability, with 9 EPDs in the top 30%. He's an eye-catcher, being deep, long and strong-topped and moves with ease. Wild and Wooly, backed by Guts and Butt genetics on the dam's side, is designed for profit.



SVS Smash Hit CSPZ

## 67 SVS Smash Hit CSPZ

ASA#... 3137070

BD... 11/19/15

Tattoo... CSPZ

**SVS Sharp Shooter XPL7**

*Purebred*

**SVS Sabrina SPKZ**

SVS Keep Dreamin RNB1

SVS Pansy PLF7

SVS Jokers Gold PM10

SVS Paula PKCZ

Adj BW **77**

Adj WW **723**

Adj YW **1203**

CE	BW	WW	YW	ADG	MCE	Milk	MWW	Stay	CW	YG	Marb	BF	REA	Shr	API	TI
8	2.4	64	85	0.13	10	25	57	26.9	23.7	-0.38	-0.1	-0.063	0.86	-0.3	119	63
%						25	25	2		25		35				

Smash Hit is a homozygous black bull exhibiting length with ample muscle in a free-moving package. With balanced EPDs, this high maternal bull has off-the-charts stayability. Use him on purebred or commercial cows to produce the right kind of replacement females.

## 2015 Bulls



SVS Optimizer CPLD

## 68 SVS Optimizer CPLD

ASA#... 2994666

BD... 2/3/15

Tattoo... CPLD

**SVS Snap Shot UN33**

*Purebred*

**SVS Princess PLD3**

SRS Right-On 22R

SVS Black Snap-Crackle-P

PVF-BF BF26 Black Joker

SVS Lindy

Adj BW **84**

Adj WW **683**

Adj YW **1183**

CE	BW	WW	YW	ADG	MCE	Milk	MWW	Stay	CW	YG	Marb	BF	REA	Shr	API	TI
7	2.9	51	82	0.19	7	28	53	21.1	23.4	-0.28	0.03	-0.05	0.66	-0.31	109	58
%							10									

Optimizer is a homozygous black bull with loads of length, a smooth pattern and a touch of frame. His sire, Snap Shot, was tremendously soggy and stout and Optimizer is the only Snap Shot son to be offered. With solid EPDs, use him on mature commercial or purebred cows to sire calves that ring the bell on sale day.



69

## SVS Checkmate CZSL

ASA#... 3088324

BD... 3/10/15

Tattoo... CZSL

SVS Victory ZL7E

Purebred

SVS Mountain Beauty ZSNL

SRS Right-On 22R

SVS Black Ruby LB7B

SVS Humdinger TR21

SVS Sugar-N-Spice SNL2

Adj BW 82

Adj WW 847

Adj YW 1268

CE	BW	WW	YW	ADG	MCE	Milk	MWW	Stay	CW	YG	Marb	BF	REA	Shr	API	TI
11	0.8	63	93	0.18	10	26	58	21.9	26	-0.31	0.1	-0.063	0.67	-0.26	127	70
%	30					15	20									

Here's a calving ease sire with ample growth, balanced EPDs and loads of maternal ability. Checkmate is a smaller frame, deep bull with an excellent disposition. This versatile bull should sire exceptional females and calves that grow like weeds. His dam is a maternal sibling to the Accelerated Genetics sire SVS Badlands BSNL, who was purchased in our last sale for \$10,750. Checkmate's genetics are packed with profit.



SVS Checkmate CZSL

70

## SVS Hero CTM2

ASA#... 3088351

BD... 3/16/15

Tattoo... CTM2

SVS Shenandoah ZWNA

Purebred

SVS Timeless TMF2

Ellingson Legacy M229

SVS Lady Bug WNBA

PVF-BF BF26 Black Joker

SVS My Lady Love MFC2

Adj BW 80

Adj WW 816

Adj YW 1252

CE	BW	WW	YW	ADG	MCE	Milk	MWW	Stay	CW	YG	Marb	BF	REA	Shr	API	TI
9	0.8	50	70	0.12	9	25	50	26.9	12.8	-0.46	-0.05	-0.064	0.95	-0.27	121	58
%	30					20		2		5			25			

Hero is an eye-catcher. This homozygous black, blaze-faced bull is stylish to the max. He's deep, long, smooth, clean and soft. This low birth weight bull is in the top 2% of the breed for stayability. It simply doesn't get much better than that. Hero should sire calves that perform and females that belong in the front pasture. He should be an asset to any herd.



SVS Hero CTM2

71

## SVS Switchback BZNL

ASA#... 3000043

BD... 10/21/14

Tattoo... BZNL

SVS Shenandoah ZWNA

Purebred

SVS Sadie ZNL3

Ellingson Legacy M229

SVS Lady Bug WNBA

SVS Reload WPF7

SVS Norrice NLJ3

Adj BW 83

Adj WW 696

Adj YW 1138

CE	BW	WW	YW	ADG	MCE	Milk	MWW	Stay	CW	YG	Marb	BF	REA	Shr	API	TI
11	1.2	62	91	0.18	11	23	54	24.6	25.7	-0.38	0.02	-0.066	0.85	-0.33	129	67
%	30				30			15		25						

Here's a really thick, moderate, easy-fleshing bull with a wide top and great disposition. This balanced EPD, calving-ease bull has plenty of performance, maternal ability and style to boot. Use Switchback to sire fancy females like his sire, Shenandoah. Simply put, he's the right kind.



Although living here by 1735, Peter Cotner/Gartner was granted legal possession of this farm in 1750. At night livestock were brought inside the cabin for protection from Indians and predators.

**SVS Sharp Shooter XPL7**

*Purebred*

**SVS Celest YW19**

SVS Keep Dreamin RNB1

SVS Pansy PLF7

SVS Reload WPF7

Adj BW **85**

SVS Cats Meow WS19

Adj WW **667**



SVS Maiden's Blush BYW9

CE	BW	WW	YW	ADG	MCE	Milk	MWW	Stay	CW	YG	Marb	BF	REA	Shr	API	TI
9	2.9	71	101	0.18	13	23	58	26.7	33.8	-0.29	0.03	-0.053	0.79	-0.34	129	70
% 20		25			10		20	3	25							

Maiden's Blush is a powerful, deep, high performance yet feminine female. She's in the top 3% of the breed for stayability, so she should be productive for many years. She's sired by our stylish Sharp Shooter and is out of an impressive Reload dam. This mating to Badlands, a SimAngus™ bull purchased by Accelerated Genetics in our last sale for \$10,750, or Sniper, should produce a winner. Seldom have we offered females from the Kelby cow family. Genetics of this magnitude are few and far between.

Ald to SVS Badlands BSNL, ASA#2947416 on 5/10/16

CE	BW	WW	YW	ADG	MCE	Milk	MWW	Stay	CW	YG	Marb	BF	REA	Shr	API	TI
8	1.8	68	98	0.19	10	22	57		30.8	-0.25	0.10	-0.04	0.70	-0.32	119	70

PE to SVS Sniper BM10, ASA#2947400 from 5/25/16 to 9/15/16.

CE	BW	WW	YW	ADG	MCE	Milk	MWW	Stay	CW	YG	Marb	BF	REA	Shr	API	TI
9	1.9	65	94	0.19	12	23	55	27	29	-0.36	-0.02	-0.05	0.92	-0.35	126	66

**SVS Keep Dreamin RNB1**

*Purebred*

**SVS Tiffany TJ35**

CNS Dream On L186

SVS Dolls Joker NB10

BF K065 Talladega

Adj BW **83**

SVS Cardinal

Adj WW **716**



SVS Hot To Trot BT35

CE	BW	WW	YW	ADG	MCE	Milk	MWW	Stay	CW	YG	Marb	BF	REA	Shr	API	TI
7	2.8	64	86	0.14	11	17	49	23.4	24.6	-0.35	-0.01	-0.073	0.71	-0.39	115	64
% 25								25				20		30		

This front pasture beauty is the kind neighbors talk about. Hot to Trot is a spectacularly feminine, long-sided, clean-lined female with loads of style. And those who follow our genetics are no stranger to her sire, Keep Dreamin'. He's proven time and time again to sire females with pizzazz and performance. And Talladega, her maternal grandsire, who was leased by Accelerated Genetics, needs no introduction. Her calf by After Shock or Sniper, should be an exceptional "keeper".

Ald to CLRS After Shock 604A, ASA#2735656 on 5/10/16

CE	BW	WW	YW	ADG	MCE	Milk	MWW	Stay	CW	YG	Marb	BF	REA	Shr	API	TI
10	1.7	66	98	0.20	11	22	55		30.5	-0.33	0.18	-0.05	0.89	-0.42	129	71

PE to SVS Sniper BM10, ASA#2947400 from 5/25/16 to 9/15/16.

CE	BW	WW	YW	ADG	MCE	Milk	MWW	Stay	CW	YG	Marb	BF	REA	Shr	API	TI
8	1.9	61	87	0.17	11	20	51	25	24.1	-0.39	-0.04	-0.06	0.88	-0.37	119	63



The Confederates had heavy casualties during the Civil War. Rural homes were often used as makeshift hospitals. Artificial limbs were made from black willows since the wood is soft, light and easy to whittle. All black willows on this farm were harvested for limbs and after the war cuttings were collected from a neighboring farm and replanted. They still grow along our stream, and always will.



74

## SVS Ponytail BYND

ASA#... 2999998

BD... 11/4/14

Tattoo... BYND

SVS Sharp Shooter XPL7

Purebred

SVS Holly YNBD

SVS Keep Dreamin RNB1

SVS Pansy PLF7

SVS Guts &amp; Butt RM10

Adj BW 82

SVS Doll Power NB1D

Adj WW 679

CE	BW	WW	YW	ADG	MCE	Milk	MWW	Stay	CW	YG	Marb	BF	REA	Shr	API	TI
8	1.8	60	83	0.14	12	21	52	26.1	21.9	-0.38	-0.07	-0.054	0.9	-0.34	120	62
%					20			4		25			30			

Ponytail has through-the-roof stayability and solid EPDs. This long, smooth, high volume female is out of a tremendous Guts and Butt daughter. Guts and Butt was known for his stamina, power and mass. Ponytail is well on her way to continuing the Doll family tradition. She's the kind of female who can put your program on the map and her calf by Badlands or Sniper should be one to write home about. Expect nothing but great performance from them.

Ald to SVS Badlands BSNL, ASA#2947416 on 5/10/16

CE	BW	WW	YW	ADG	MCE	Milk	MWW	Stay	CW	YG	Marb	BF	REA	Shr	API	TI
8	1.3	63	90	0.17	10	22	53		24.9	-0.30	0.05	-0.04	0.76	-0.32	114	66

PE to SVS Sniper BM10, ASA#2947400 from 5/25/16 to 9/15/16.

CE	BW	WW	YW	ADG	MCE	Milk	MWW	Stay	CW	YG	Marb	BF	REA	Shr	API	TI
8	1.4	59	86	0.17	12	22	52	26.3	22.8	-0.40	-0.07	-0.05	0.98	-0.35	121	62



SVS Ponytail BYND

75

## SVS Minnie Pearl BYNF

ASA#... 3000028

BD... 12/5/14

Tattoo... BYNF

SVS Sharp Shooter XPL7

Purebred

SVS Hope YNF2

SVS Keep Dreamin RNB1

SVS Pansy PLF7

SRS Right-On 22R

Adj BW 79

SVS Nichole NFC2

Adj WW 731

CE	BW	WW	YW	ADG	MCE	Milk	MWW	Stay	CW	YG	Marb	BF	REA	Shr	API	TI
8	2	65	93.1	0.17	9	28	60	25.3	28.1	-0.31	-0.02	-0.046	0.81	-0.31	122	66
%						10	10	10								

Here's a pearl indeed! She's as pretty as they come. This blaze-faced, ultra-feminine, broody beauty has been a standout since birth. This high maternal, versatile female has no-holes EPDs and should produce winners in the showing or pasture. Either mating to Badlands or Sniper, our fancy Shenandoah son, should produce a highly productive calf with tons of potential and flare.

Ald to SVS Badlands BSNL, ASA#2947416 on 5/10/16

CE	BW	WW	YW	ADG	MCE	Milk	MWW	Stay	CW	YG	Marb	BF	REA	Shr	API	TI
8	1.4	65	95	0.18	8	25	58		27.9	-0.26	0.07	-0.04	0.71	-0.31	114	68

PE to SVS Sniper BM10, ASA#2947400 from 5/25/16 to 9/15/16.

CE	BW	WW	YW	ADG	MCE	Milk	MWW	Stay	CW	YG	Marb	BF	REA	Shr	API	TI
8	1.5	62	90	0.18	10	25	56	25.9	25.9	-0.37	-0.05	-0.05	0.93	-0.33	123	64



SVS Minnie Pearl BYNE



What is this? It was dried by Native Americans and baked in bread, makes a delicious jam, and is loved by wildlife. First it's green, then turns orange, but don't taste it until it turns deep red/purple after a heavy frost. If you do it will make your mouth pucker. The persimmon!



SVS Windhaven BRBD

# 76

## SVS Windhaven BRBD

ASA#... 3000021

BD... 12/22/14

Tattoo... BRBD

**SVS Snap Shot UN33**

Purebred

**SVS Rosa RB1D**

SRS Right-On 22R

SVS Black Snap-Crackle-P

BF K065 Talladega

Adj BW **80**

PVF-BF BG10 Doll BE22

Adj WW **710**

CE	BW	WW	YW	ADG	MCE	Milk	MWW	Stay	CW	YG	Marb	BF	REA	Shr	API	TI
9	2.5	72	110	0.24	8	23	59	18.6	38.7	-0.26	0.07	-0.073	0.58	-0.41	117	72
% 15		15	10				15	15			20			25		

Here's another female from the ageless Doll cow family. These genetics keep producing sale toppers. This high performance female is packed with outcross genetics. Her sire, Snap Shot, is ultra-soggy and stout, and her maternal grandsire, Talladega, left an indelible mark on this herd. The femininely powerful Windhaven has unlimited potential. These genetics are predictable, proven and profitable and her calf, sired by Badlands or Sniper, should follow suit.

Ald to SVS Badlands BSNL, ASA#2947416 on 5/10/16

CE	BW	WW	YW	ADG	MCE	Milk	MWW	Stay	CW	YG	Marb	BF	REA	Shr	API	TI
8	1.6	68	103	0.22	8	23	57		33.3	-0.24	0.12	-0.05	0.60	-0.36	116	71
PE to SVS Sniper BM10, ASA#2947400 from 5/25/16 to 9/15/16.																
CE	BW	WW	YW	ADG	MCE	Milk	MWW	Stay	CW	YG	Marb	BF	REA	Shr	API	TI
8	1.8	65	99	0.22	9	23	55		31.2	-0.34	0.00	-0.06	0.82	-0.38	120	67

## Reference Sires

### R1

#### SVS Badlands BSNL

3/4 Blood Bull ASA#... 2947416

TJ Sharper Image 809U x SVS Sugar n Spice SNL2

### R2

#### SVS Rawhide BXPZ

Purebred Bull ASA#... 3000007

Mr NLC Upgrade U8676 x SVS Song Bird XPFZ

### R3

#### SVS King Pin YU09

Purebred Bull ASA#... 2650864

SRS Right-On 22R x SVS Sickerdoodle US09

### R4

#### SVS Sniper BM10

Purebred Bull ASA#... 2947400

SVS Shenandoah ZWNA x SVS What A Doll MB10

### R5

#### SVS Sharp Shooter XPL7

Purebred Bull ASA#... 2591387

SVS Keep Dreamin RNB1 x SVS Pansy PLF7

### R6

#### SVS Keep Dreamin RNB1

Purebred Bull ASA#... 2371472

CNS Dream On L186 x SVS Dolls Joker NB10

### R7

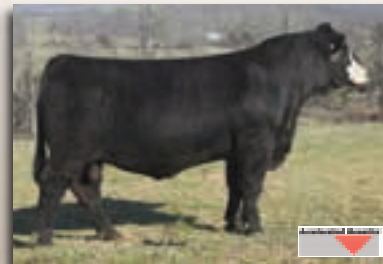
#### SVS Bell Ringer ANL3

Purebred Bull ASA#... 2875231

Mr NLC Upgrade U8676 x SVS Norrice NLJ3



SVS Badlands BSNL - ref. sire



SVS Rawhide BXPZ- ref. sire



SVS King Pin YU09- ref. sire



SVS Sharp Shooter XPL7 - ref. sire



SVS Bell Ringer ANL3 - ref. sire








## *Come and Visit the historical Shenandoah Valley!*

Fall is one of the most wonderful times of year in the Shenandoah Valley. The leaves have turned and the fall harvest is bountiful. Make it a weekend getaway and take in some of the many historical offerings in the Shenandoah Valley.

- New Market Battlefield Military Museum - 9500 Collins Pkwy - New, Market, VA
- Shenandoah Valley Travel Association - <http://www.visitshenandoah.org/Home.aspx>
- Andrew Zirkle Mill - <http://www.historiczirklemill.org/azirkle.shtml>
- Showalter's Orchard and Greenhouse - <http://showaltersorchard.com/>
- Virginia Museum of the Civil War: New Market State Historical Park - <http://www2.vmi.edu/museum/nm/index.html>

## Smith Creek Heritage Farm

*Exhibits of farm related collectibles  
and vintage equipment*

*Owners Tommy and Georgie Wright share  
their knowledge and love of antique  
agricultural machinery with visitors.*

**I-81 exit 269 • 179 Grace Lane  
New Market, VA 22844**

**540-333-3955**

**April 1-November 15  
Thursday, Friday, & Saturday ~ 1-5pm  
Other times by appointment**

## A visit to the Smith Creek Heritage Farm

is a journey into  
farming life of old.

Established in a 100-year-old barn along Smith Creek, south of Mt. Jackson, the Heritage Farm's collection of tools and equipment once used by father, grandfather, perhaps great-grandfather is an "I remember..." experience.

The exhibit includes rakes, hay balers, carriages, saws, axes and milking equipment of generations past. There are saddles dating back 150 years. Into old-time transportation? Check out the covered wagon, a well-used sleigh and a doctor's buggy that logged plenty of miles once upon a time.

Co-owner Tommy Wright is ready to eagerly explain a small display of tools used in butchering and sheep shearing. A small kitchen welcomes those interested in checking out cooking utensils, many of which those old farmers' wives and mothers put to good use.

Plan to stay for a while at Smith Creek Heritage Farm. You're in for more than just a tour of antique equipment: Tommy Wright and his wife Georgie have plenty of tales to weave.

The Wrights take their visitors to familiar places of another time, and the memories can be endless.







Doug & Debbie Parke • 859.421.6100  
153 Bourbon Hills • Paris KY 40361  
859.987.5758 • office@dpsalesllc.com  
www.dpsalesllc.com

PRESORTED  
FIRST-CLASS MAIL  
U.S. POSTAGE PAID  
LivestockDirect.net  
PERMIT NO. 29

**First Class**

**Time Dated Material**

