



Shenandoah's Shining Stars



FALL SALE

October 19, 2019 at 1:00 pm in Quicksburg, VA

*Specializing in unique, practical
and powerful Simmental genetics since 1976.*



Welcome to the sale...

Please join us in the beautiful Shenandoah Valley Saturday, October 19th at 1:00 pm for our 14th production sale. Since 1976 we've been breeding Simmentals in the mountains of rural Virginia. Our focus has been raising cattle with breed-leading performance and longevity, outstanding phenotype, consistency and style. While we raise SimAngus™, our specialty is elite, outcross, purebred Simmental genetics.

We're SUPER excited about this offering and are proud to present this wide genetic selection from high-powered popular sires of today, to rock solid genetics from yesteryear, to highlights from our own outcross genetics. It's the best offering yet!

These cattle are bred to efficiently convert grass to meat, thrive on fescue, travel rough country, and withstand wide weather extremes experienced in these mountains. Cattle pay our bills and these cattle flat out perform and as an added bonus, they're pleasing to the eye!

This herd is our pride and joy, I interact with them daily and know them inside and out. They are treated with respect, well-cared for, and always eat before we do. Our motto is "Home of the Keepin' Kind" and the cattle in this offering are definitely that!

The bulls are stout and knee-deep in quality. They're athletes, developed in Virginia range conditions, not in a dry lot. These bulls are the right kind, and remember, the bull provides at least half of the genetic merit of your herd. He's an investment in genetic progress.

And look at the beautiful Ladies of the Valley! The quality of these females speaks for itself. They're outstanding producers from time-tested cow families, with some eye-popping potential donors to boot. They're high maternal, high performance, "pasture pretty" females. These are one-of-a-kind genetics you won't find anywhere else.

Having spring and fall calving herds gives us flexibility to keep our calving season tight. If a heifer needs a little more grow time before breeding, we breed her early the next season. This little extra time develops her into a much nicer cow.

It's been a challenging time, from record levels of rain last year and early this spring, to an extreme drought the last three months. We're already feeding hay, which will make for a very long winter, but we're still smiling! Farmers and ranchers are eternal optimists. We always look forward to a brighter day. This way of life is in our blood. This is simply what we were born to do.

Cattle folks, near and far, are the same breed of people. We all endure similar trials and tribulations, witness the most amazing miracles, have a deep-seated love of the land, and know the true meaning of friendship. Our good-hearted, dedicated and talented friends help make this sale possible, and a special thanks to Barry Armstrong for his help year-round.

Please visit our website and view our new video, SVS Honor Roll, which highlights cattle we're very proud to have raised. Also view the on-line catalog and videos and contact me with any questions.

When you purchase cattle here, you're not just buying cows, you're investing in a program that's been here for the long haul. We're committed to sharing our top genetics and you can buy with confidence. We're here to help your program prosper and to enjoy the cattle along the trail.

Sale time is an extended family reunion where friends gather to talk cow and enjoy southern hospitality. It continually amazes us how many long-term friendships develop from the simple purchase of a cow.

Our video auction is held in a 1860s barn on our historic Century Farm settled in 1735 and for this sale we've added something special. Please join us Friday, October 18th, after 3 pm to preview the cattle, listen to bluegrass music and a guest speaker, Marty Ropp with Allied Genetic Resources, talk about commercial cattle production, and enjoy a country cookout.

Hope to see you soon!

Shenandoah Valley Simmentals



Online Video Salebook
LiveAuctions.TV • ShenandoahValleySimmentals.com



SHENANDOAH VALLEY SIMMENTALS
Lisa Zirkle 540-335-1885
www.shenandoahvalleysimmentals.com

Shenandoah's Shining Stars

FALL SALE

October 19, 2019 at 1:00 pm in Quicksburg, VA

SALE LOCATION

3691 S Middle Rd., Quicksburg, VA 22847
See page 4 for map and directions.

SALE DAY PHONES

Lisa Zirkle	540.335.1885
Barry Armstrong	540.975.1474
Corey Wilkins	256.590.2487
Marty Ropp	406.581.7835
Sale Facility Line 1	540.740.2530
Sale Facility Line 2	540.740.2527

AUCTIONEER

Tracy Herl	402.469.3852
------------	--------------

RING STAFF

Scott Weller	540.294.0555
Jeff Marsh	540.229.0754

SALE CONSULTANT

Jeremy Ruble	406.581.7940
Martin Macqueen	540.839.9494 or 540.965.2199

INSURANCE

Insurance will be available on sale day or by asking any of the team members. We strongly recommend Jame Kreiger 812.208.0956

TRUCKING

Mark Howard	865.300.3636
Lowell Caplinger	540.560.9293

HERD VETERINARIAN

Dr. Justin Hill	540.879.2581
-----------------	--------------

VIDEOS

Videos of all the lots will be available prior to the sale at LiveAuctions.TV and ShenandoahValleySimmentals.com

ACCOMMODATIONS

Quality Inn Shenandoah Valley – New Market	540.740.3141
Holiday Inn Express – Woodstock	540.459.5000
Courtyard by Marriott – Harrisonburg	540.432.3031

LIVE BROADCAST

Bid live online at www.LiveAuctions.TV	
Brooklyn Graham	812.530.0748

ANNOUNCEMENTS

Announcements made sale day take precedence over printed material in the catalog or other printed material associated with the sale. Anyone attending the sale does so at his/her own risk. Shenandoah Valley Simmentals will not be responsible for personal injury or loss while attending the sale.

SALE REGISTRATION AND PAYMENT

Buyer numbers will be issued with a valid ID, and payment is due the day of the sale, unless prior arrangements have been made. Timely payment of purchases is much appreciated.

TERMS AND CONDITIONS

All Animals will be sold in accordance with suggested guidelines of the American Simmental Association.

REGISTRATION AND UPDATED EPDS

All cattle will be registered with the American Simmental Association. Please note EPDs may change from the time the sale book is printed until the registration papers are transferred. EPDs printed in the catalog were pulled from IGS on September 25, 2019. Shenandoah Valley Simmentals will transfer cattle to the buyer at the seller's expense after full payment is received. Buyers must provide the sale clerk with complete information for transferring registration certificates.

HERD HEALTH

All females will sell with proper health certificates for immediate interstate shipment. The bred females have been pregnancy examined and are confirmed safe, unless otherwise posted or announced. For cattle leaving Virginia, a Certificate of Veterinary Inspection will be available for immediate shipment. Cattle that require additional tests will be conducted within one week of the sale at the buyer's expense. Each animal will be at the purchaser's risk immediately following the auction.

BULL GUARANTEE

All bulls have passed a complete breeding soundness examination performed by a veterinarian. All bulls are guaranteed for breeding soundness and injury for the first breeding season, defined as 90 days from the first turnout, barring abuse, neglect and poor management practices. If a replacement bull is needed, one of equal value will be provided. If a replacement bull is not available, a sale credit will be provided to use at the next SVS sale minus the documented salvage value of the previous purchase.

SEMEN INTEREST

Shenandoah Valley Simmentals will be selling full possession and 70% semen interest of all bulls and retaining 30% semen interest. The buyer has full control, full possession, 100% of the salvage value and 70% semen interest. Any bulls that Shenandoah Valley Simmentals wishes to collect for in-herd use semen will be done at the buyer's convenience and Shenandoah Valley Simmental's expense. This will affect very few bulls.

HOUSING YOUR PURCHASE

Bulls and females will be fed and cared for free of charge for one week following the sale and will be housed at a rate of \$3.50 per day thereafter until you are ready to pick up your purchase. All animals must be picked up by December 1, 2019 to allow SVS space to develop new cattle.

sale management

Marty Ropp 406-581-7835

Corey Wilkins 256-590-2487

www.alliedgeneticresources.com



DATA GENIE

LiveAuctions TV



Welcome to Shenandoah's Shining Stars Fall production sale. The opportunity to work with Lisa has been nothing short of a privilege, and the offering truly speaks for itself. Shenandoah Valley Simmentals is no newcomer to the seedstock business; additionally, it is one of the oldest, most productive herds across the country. Lisa has worked tirelessly in delivering functional cattle that will meet the demands of her commercial customers while maintaining the eye appeal and outcross genetics that generate interest from seedstock producers.



This year's offering is highlighted by an ultra-high-quality set of females who will have the brightest of futures. Study the pedigrees closely and you will find many proven producers that have worked for Shenandoah Valley Simmentals for years, provided in an outcross genetic package. If you are searching for that one cornerstone breeding piece or looking for several elite replacement females, I am confident there is something in the offering that will fit your needs. Likewise, the bull offering is as deep a set as you will find along the east coast. The bulls are developed slowly, consequently offering longevity for many breeding seasons to come while contributing proven, profit-oriented genetics.

If you have not had a chance to go through Shenandoah Valley Simmentals in a while, the trip will be well worth your time. We encourage you to travel over to Quicksburg and join us for a weekend of fun. If you cannot be with us on sale day, feel free to contact us for honest and reliable service.

Sincerely,

Marty Ropp and Corey Wilkins
Allied Genetic Resources

Reaching the World's LARGEST Buyer Base.

IF YOU ARE A RANCHER with uniform load lots and purchase genetics from reputable providers such as New Day, **Contact the Allied/Superior team** to get the most out of your next load of feeder cattle.



CLINT BERRY
417-844-1009
Gainesville, MO
Marketing high quality cattle,
coast to coast, to a national buyer
base.



ROCKY FORSETH
406-590-7984
Helena, MT
Serving customers
nation wide.

Market Your Cattle The Superior Way!

www.superiorlivestock.com

www.alliedgeneticresources.com



Schedule of Events

FRIDAY, OCTOBER 18

3:00 PM

Sale Cattle Available for viewing

5:00 PM

Lisa would like to invite everyone for a country cookout with old-fashioned bluegrass music

6:00 PM

Genetics Built for the Future. Featuring Marty Ropp.

SATURDAY, OCTOBER 19

All Day

Sale Cattle Available for Viewing

11:30 AM

Lunch Provided by Shenandoah Valley Simmentals

1:00 PM

Shenandoah's Shining Stars Sale Begins

Join us Friday evening for a night of fun and an outlook on the Beef Industry.

Visit the historic Shenandoah Valley

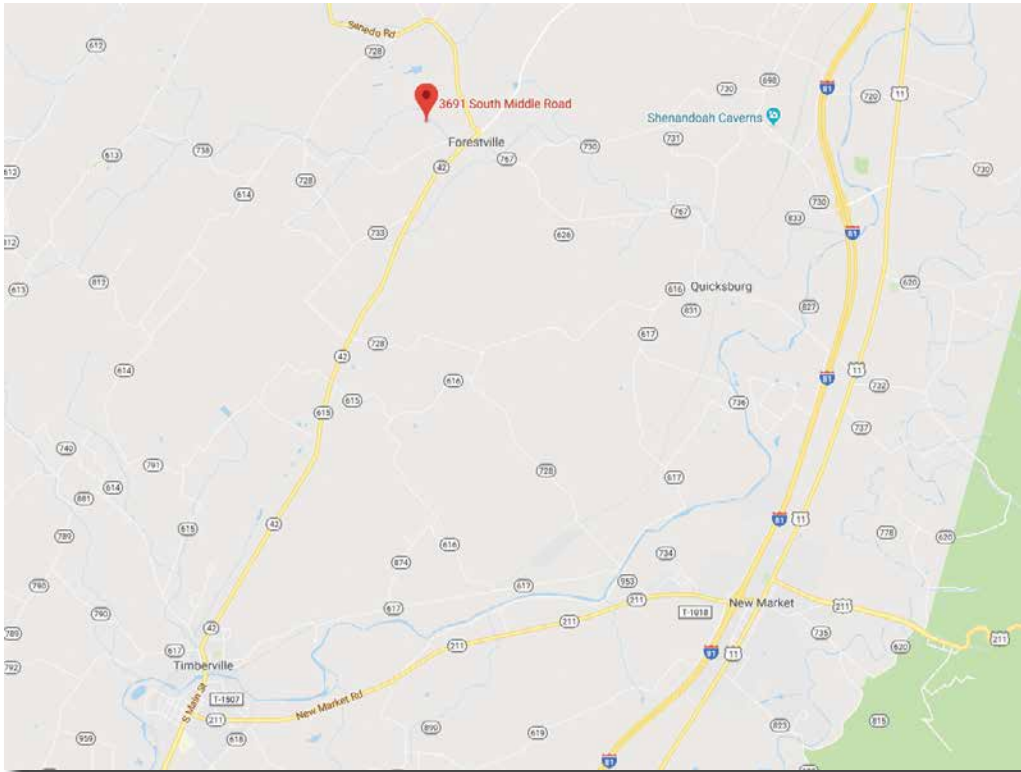
Fall is a wonderful time to visit the valley. Make it a weekend and take in some of the historic sites nearby.

- Virginia Museum of Civil War: New Market State Historical Park
- Shenandoah Valley Travel Association, New Market
- Andrew Zirkle Mill, Forestville
- Showalter's Orchard, Timberville
- Shenandoah Caverns, Quicksburg



DIRECTIONS TO THE SALE FACILITY

3691 S. Middle Rd., Quicksburg, VA 22847



From the North:

From I-81 take Mt. Jackson Exit# 273. Turn RIGHT off the ramp. Turn LEFT on S. Middle RD. Proceed through the next stop sign to a 4-way stop at Forestville. Go straight through the intersection onto RT. 42 South (Senedo RD.) Go approximately 0.3 and turn right on S. Middle RD. Farm is second lane on the RIGHT. (6 miles from interstate).

From the South:

From I-81 N take New Market Exit# 264. Turn LEFT off the ramp onto RT. 211 West. Turn Right at the stoplight at Timberville onto RT. 42 North (Senedo RD.) Turn LEFT on S. Middle RD. Farm is second lane on the RIGHT. (9 miles from interstate).

Do not follow GPS when coming from the South. It is incorrect.

A little bit of history...

The Myers house, an early Brethren meeting house, was built of locally harvested yellow pine logs in 1750 and was added onto in 1803. Log homes were dark inside since the light was only provided by sunlight and oil lamps. To lighten up the home, brightly colored wall paper was often used. In the oldest section of the house, seven layers of wall paper were applied, and in some rooms upstairs the wall coverings included cloth and feed sacks as well. Samples have been preserved of each layer as shown in these photos.





SVS ROSES R RED CALH sells as Lot 2.

Lot 1

Top 25% CE - Top 35% WW - Top 35% YW
Top 10 % MCE - Top 3% Stay - Top 15%
REA - Top 10% \$API - Top 20% \$TI
One of the very best red star-faced females you will find. Ravishing Ruby is certainly one that is hard to part with and will have the brightest of futures. Physically she is powerful, bold-bodied, and is always one that quickly catches your attention. She combines her massive build with an outstanding EPD profile. Her Cowboy Cut son, Cripple Creek, sells as Lot 69. The proof is in the pudding. We are confident this Prime Beef daughter will be a cornerstone breeding piece at her new home.

Cow Family: Joker's Darlin'



SVS RAVISHING RUBY CZTM sells as Lot 1.

1 SVS RAVISHING RUBY CZTM

Red Polled PB SM
Cow ASA 3136954 CZTM BD: 9/18/2015

WS BEEF KING W107
WS PRIME BEEF Z8
HSF MISS SKY 87U

SVS KEEP DREAMIN RNB1
SVS FIREFLY ZTM8
SVS TWILIGHT TMK8

CE	BW	WW	YW	MCE	MILK	MWW	STAY	Adj. BW
12.5	0.5	72.1	106.6	8.2	17.9	53.9	21.4	80
DOC	CW	YG	MARB	REA	API	TI	Adj. WW	
3.4	23.8	-0.53	0.08	1.01	144.7	75.2	745	

Lot 1A: 9-29-19 heifer, 80 lbs, SVS Sensation GCZM, sire SVS Maverick CXPZ

2 SVS ROSES R RED CALH

Red Polled PB SM
Cow ASA 3088366 CALH BD: 3/9/2015

WS BEEF KING W107
WS ALL-AROUND Z35
CDI MS HIGH ROLLER 39W

SVS RAM ROD UPF7
SVS MIMOSA ALH8
SVS GAMBLERS GAL LHD8

CE	BW	WW	YW	MCE	MILK	MWW	STAY	Adj. BW
10.4	1.6	80.8	122.3	6.5	21.3	61.6	18.3	85
DOC	CW	YG	MARB	REA	API	TI	Adj. WW	
11.4	43.9	-0.50	0.00	1.00	132.9	77.1	768	

AI bred 1-12-19 to CCR COWBOY CUT 5048Z (2703910). Pasture bred 1-30-19 to 3-30-19 to SVS REVEILLE BU09 (2947434).

Selling choice of the red females.

Cornerstone Cows

3 SVS CHOCOLATE CHIP CN8H

Homo Black Polled PB SM
Cow ASA 3088380 CN8H BD: 8/20/2015

ELLINGSON LEGACY M229 BF K065 TALLADEGA
SVS SHENANDOAH ZWNA SVS NINA N87H
SVS LADY BUG WNBA COTT RED SILK 887H

CE	BW	WW	YW	MCE	MILK	MWW	STAY	Adj. BW
8.7	2.5	57.1	79.9	3.2	20.3	48.8	19.8	84
DOC	CW	YG	MARB	REA	API	TI	Adj. WW	
10.9	20.1	-0.55	-0.16	0.73	112.5	56.9	-	

Pasture bred 1-9-19 to 3-15-19 to SVS HORNET'S NEST DZ13 (3275112).

Top 3% Stay

An elite, homozygous black daughter of Shenandoah that goes back to the Red Silk family on the bottom side, who was the most influential red donor we have had. Chocolate Chip, with her clean lines and pretty udder, has raised two females that have both been retained in the herd. Buy with confidence. This female has a strong track record of success and will into the future.

Cow Family: Red Silk



SVS CHICKADEE DYND sells as Lot 5.

4 SVS MELODY CZSZ

Black Polled PB SM
Cow ASA 3088338 CZSZ BD: 6/2/2015

SVS HUMDINGER TR21 SVS GOLD FINGER SLF2
SVS FULL MOON ZSJ2 SVS DOGWOOD ZSPZ
SVS SALLY SJ22 SVS SABRINA SPKZ

CE	BW	WW	YW	MCE	MILK	MWW	STAY	Adj. BW
8.5	2.2	68.9	98.1	4.0	29.5	63.8	16.7	87
DOC	CW	YG	MARB	REA	API	TI	Adj. WW	
10.3	26.2	-0.48	-0.08	0.75	115.7	67.2	805	

Lot 4A: SVS Giselle GCZZ, heifer calf born on 9-8-19, 76 lbs., sired by Elevate

Top 10% Milk

Melody, a young Full Moon daughter, has already raised a high caliber replacement female and a featured bull, Perfect Storm, Lot 92. Her first two progeny had an average WW ratio of 106. Her maternal sib, Veronica, sells as Lot 22. Melody, so typical of Humdinger genetics, is long and deep, with a beautiful profile and an exceptional disposition. Females like her are hard to part with and her heifer calf at side is no different. These outcross genetics can be used in many ways to produce fancy offspring that have a very bright future just like this proven female.

Cow Family: Paula

5 SVS CHICKADEE DYND

Homo Black Homo Polled PB SM
Cow ASA 3274993 DYND BD: 12/14/2016

SRS RIGHT-ON 22R SVS GUTS & BUTT RM10
SVS STINGER XSPZ SVS HOLLY YNBD
SVS SABRINA SPKZ SVS DOLL POWER NB1D

CE	BW	WW	YW	MCE	MILK	MWW	STAY	Adj. BW
8.2	2.7	66.1	96.0	4.9	21.4	54.3	16.4	79
DOC	CW	YG	MARB	REA	API	TI	Adj. WW	
10.7	29.4	-0.50	-0.19	0.76	107.0	61.4	581	

AI bred 12-17-18 to TJ HIGH PLAINS 986E (3288842). Pasture bred 1-5-19 to 3-30-19 to SVS CLEAR WATER DBZ9 (3275096).

A gorgeous, homozygous black, fall-bred cow that has all the right pieces to make a tremendous impact in your herd. She is bold-bodied, stout-hipped, and is as nice-balanced kind of female as you can make. She offers an immense amount of visual performance and will be the kind to raise elite breeding stock for years to come. This little gal is just getting started, and being backed by Doll family genetics, expect only great offspring from Chickadee.

Cow Family: Doll

6 SVS OPAL DBM6

Homo Black Homo Polled PB SM
Cow ASA 3275041 DBM6 BD: 9/4/2016

HOOK'S YELLOWSTONE 97Y W/C WIDE TRACK 694Y
CLRS AFTER SHOCK 604 A SVS BUSY BEE BM6C
HOOKS SARITA 4S SVS MONIQUE M65C

CE	BW	WW	YW	MCE	MILK	MWW	STAY	Adj. BW
9.6	1.5	69.5	103.8	1.2	17.2	51.9	18.0	81
DOC	CW	YG	MARB	REA	API	TI	Adj. WW	
12.5	33.3	-0.39	-0.03	0.71	124.0	68.4	600	

Pasture bred 1-5-19 to 3-30-19 to SVS CLEAR WATER DBZ9 (3275096).

Top 25% Doc

Proven AI sires are on both sides of this young standout's pedigree. This Aftershock female offers an immense amount of length and power. Opal is homozygous black and homozygous polled. We showed her maternal great granddam, Jana, quite competitively at the Denver National Stock Show and what a grand time we had! Purebred females with this much quality are hard to find and would be a great addition to any herd.



CLRS AFTER SHOCK 604 A sire of Lot 6.

7 SVS PIXIE DAOB

Homo Black Polled PB SM
Cow ASA 3275028 DAOB BD: 10/14/2016

HOOK'S YELLOWSTONE 97Y MR NLC UPGRADE U8676
CLRS AFTER SHOCK 604 A SVS RIGHT AS RAIN ASOA
HOOKS SARITA 4S SVS SANDY S019

CE	BW	WW	YW	MCE	MILK	MWW	STAY	Adj. BW
11.0	1.4	75.8	111.5	5.2	19.4	57.3	19.6	78
DOC	CW	YG	MARB	REA	API	TI	Adj. WW	
10.7	36.0	-0.43	0.01	0.80	134.0	73.9	660	

Lot 7A: 9-19-19, bull, 77 lbs, SVS Rain Maker GDOB, sired by Authority.

Top 20% WW - Top 25% YW - Top 20% Stay - Top 25% \$API - Top 25% \$TI
Pixie has an exciting pedigree that brings to the table an elite genetic profile that ranks in the top 25% of the breed for \$API and has impressive EPDs across the board. Pixie is a direct daughter of our beautiful Right as Rain donor and her first bull calf certainly did not disappoint. This homozygous black female is clean-made, high volume and is just right. Her black, star-faced Authority bull calf should develop into a herd sire to write home about. Buy with confidence since these genetics never fail.

Cow Family: Right as Rain



SVS RIGHT AS RAIN Lot 7 cow family.

8 SVS MOUNTAIN MADE DANB

Homo Black Homo Polled PB SM
Cow ASA 3275098 DANB BD: 11/17/2016

SRS RIGHT-ON 22R SVS STINGER XSPZ
SVS REVEILLE BU09 SVS ENCHANTRESS AN9B
SVS SNICKERDOODLE US09 SVS KELBYS BLAZE N19B

CE	BW	WW	YW	MCE	MILK	MWW	STAY	Adj. BW
8.3	2.6	70.8	100.3	5.5	22.7	58.0	19.5	82
DOC	CW	YG	MARB	REA	API	TI	Adj. WW	
11.9	22.3	-0.47	-0.15	0.69	117.3	65.3	582	

Lot 8A: 9-27-19, bull, 84 lbs, SVS Profit Maker GDNB, sired by Yellowstone.

Top 20% Stay

Mountain Made is a coming four-year old daughter of Reveille. Her True Justice heifer calf is one of the highlights in our replacement pen. This female comes from the great Kelby cow family that is known for perfect feet, udders and longevity. This homozygous black and homozygous polled female is put together in a deep, eye-appealing package. Females like her should be staying in our herd. Just look at her calf at side!

Cow Family: Kelby



SVS KELBY Lot 7 and 8 cow family.



9 SVS SOFIE DUP7

Homo Black Hetero Polled PB SM
Cow ASA 3275060 DUP7 BD: 11/4/2016

ELLINGSON LEGACY M229 DS BLACK ZINGER 141B
SVS SHENANDOAH ZWNA SVS HONEY BEE UPL7
SVS LADY BUG WNBA SVS PANSY PLF7

CE	BW	WW	YW	MCE	MILK	MWW	STAY	Adj. BW
9.6	1.6	61.5	98.1	5.9	26.1	56.8	18.5	80
DOC	CW	YG	MARB	REA	API	TI	Adj. WW	
9.6	29.4	-0.54	-0.21	0.95	114.2	61.1	621	

AI bred 12-16-18 to CCR COWBOY CUT 5048Z (2703910). Pasture bred 1-5-19 to 3-30-19 to SVS CLEAR WATER DBZ9 (3275096).

Top 25% REA

Like all Shenandoah daughters, Sofie is a beautiful profiling female. She has a gorgeous udder and exceptional feet and legs. Her first bull calf, Common Sense, sells as Lot 85. This versatile, homozygous black female from the tremendously productive Black Ruby cow family, can be mated many ways to produce more of the keepin' kind.

Cow Family: Pansy/Black Ruby



SVS WHAT A DOLL MB10 maternal grandam of Lot 10.

10 SVS MISTLETOE DXM1

Black
Cow ASA 3275107

Polled
DXM1

PB SM
BD: 11/17/2016

SVS KEEP DREAMIN RNB1
SVS SHARP SHOOTER XPL7
SVS PANSY PLF7

SVS HUMDINGER TR21
SVS COVER GIRL XM10
SVS WHAT A DOLL MB10

CE	BW	WW	YW	MCE	MILK	MWW	STAY	Adj. BW
9.5	2.0	62.6	92.8	7.5	26.1	57.3	17.7	82
DOC	CW	YG	MARB	REA	API	TI	Adj. WW	
11.1	25.1	-0.53	-0.31	0.90	104.9	58.0	607	

AI bred 12-16-18 to OVAL F ALL TIME A322 (2749844). Pasture bred 1-5-19 to 3-30-19 to SVS CLEAR WATER DBZ9 (3275096).

Top 15% MCE - Top 15% Milk

Here is a direct daughter of our Sharp Shooter herd sire, an ultra-fancy Keep Dreamin' son, who has given us a tremendous set of females. Mistletoe, a Humdinger grand-daughter, is loaded with volume. Use these unique SVS genetics to produce offspring that anyone should be proud to own.

Cow Family: What a Doll

A little bit of history...

Over 100 years ago there was an apple orchard on the farm. Due to wind damage and age, trees were being lost at an alarming rate. To save these heirloom varieties, scion wood was collected from every tree and grafted onto root stock. The entire orchard, 55 trees, was reset in its original field. Now, they are beginning to bear. Next fall varieties will be identified. Many are cider apples since cider helped folks through the long, cold winter. Next fall an apple butter boiling and cider pressing are on the radar! Oh what fun!!!



11 SVS REMINISCING EYSZ

Homo Black Polled 1/2 SM 1/2 AN
Cow ASA 3427513 EYSZ BD: 10/19/2017

BASIN FRANCHISE P142 SVS GOLD FINGER SLF2
EF COMPLEMENT 8088 SVS MONARCH YSPZ
EF EVERELDA ENTENSE 6117 SVS SABRINA SPKZ

CE	BW	WW	YW	MCE	MILK	MWW	STAY	Adj. BW
12.8	0.0	67.5	105.2	9.4	28.5	62.2	12.4	68
DOC	CW	YG	MARB	REA	API	TI	Adj. WW	
12.3	30.9	-0.13	0.27	0.42	124.4	72.8	563	

AI bred 1-4-19 to HOOK'S YELLOWSTONE 97Y (2612546). Pasture bred 1-22-19 to 4-15-19 to SVS STOCKADE DZS9 (3275097).

Top 10 % MCE - Top 10% Milk - Top 15% MWW
Reminiscing is a big, broody EF Complement daughter packed with visual performance. She is out of the same cow family as Melody, who is offered as Lot 4. Don't miss out on this stout, homozygous black, half-blood SimAngus™ female with solid EPDs. She is bound to put dollars in your pocket.

Cow Family: Paula



SVS REMINISCING EYSZ sells as Lot 11.

12 SVS POPCORN EXT8

Hetero Black Polled 1/2 SM 1/2 AN
Cow ASA 3427549 EXT8 BD: 10/3/2017

O C C PAXTON 730P ELLINGSON LEGACY M229
COLEMAN CHARLO 0256 SVS SUNNY DAY XTM8
BOHI ABIGALE 6014 SVS TWILIGHT TMK8

CE	BW	WW	YW	MCE	MILK	MWW	STAY	Adj. BW
12.5	0.4	51.5	85.0	0.4	29.4	55.1	16.7	76
DOC	CW	YG	MARB	REA	API	TI	Adj. WW	
12.2	14.6	-0.25	0.25	0.60	125.7	62.9	429	

AI bred 1-4-19 to LRS ELEVATE 213B (2842534). Pasture bred 1-22-19 to 4-15-19 to SVS STOCKADE DZS9 (3275097).

Top 5% Milk

Popcorn is a real eye-catcher and is a great first generation SimAngus™ daughter out of a purebred Olie dam. This beauty has an elegant, feminine look with a gorgeous head and neck, while maintaining tons of rib shape and capacity. This sharp female is going to be a heavy milker with a nice udder. She has it all...on paper and in the front pasture! Take advantage of this opportunity to own this young female with proven genetics. The Jokers' Darlin' cow family hit another home run with Popcorn.

Cow Family: Jokers' Darlin



SVS POPCORN EXT8 sells as Lot 12.

13 SVS LEMONADE ERF2

Hetero Black Polled 1/2 SM 1/2 AN
Cow ASA 3427487 ERF2 BD: 10/15/2017

O C C PAXTON 730P BF K065 TALLADEGA
COLEMAN CHARLO 0256 SVS SERENITY RF22
BOHI ABIGALE 6014 SVS BETTINA

CE	BW	WW	YW	MCE	MILK	MWW	STAY	Adj. BW
12.0	0.2	59.6	90.1	0.1	24.7	54.5	12.7	73
DOC	CW	YG	MARB	REA	API	TI	Adj. WW	
10.9	20.9	-0.20	0.24	0.50	118.9	66.7	505	

AI bred 1-4-19 to HOOK'S YELLOWSTONE 97Y (2612546). Pasture bred 1-22-19 to 4-15-19 to SVS STOCKADE DZS9 (3275097).

Top 25% Milk

We are offering some of our best SimAngus™ daughters and this Coleman Charlo daughter is as good as any. This female is moderate-framed, bold-bodied, and easy fleshing, and has loads of eye appeal. She is dropping a beautiful udder and has a feminine look. Lemonade's maternal sib, Cash Flow, sells as Lot 93. Their dam, an ultra-feminine, highly productive Talladega daughter, always raises the right kind and Lemonade is carrying on the family tradition.

Cow Family: Bettina



SVS LEMONADE ERF2 sells as Lot 13.

Fall Bred Heifers



PVF-BG DOLL Lot 14 cow family.

14 SVS MY KIND O PARTY EUR1

Black Polled 1/2 SM 1/2 AN
Cow ASA 3427557 EUR1 BD: 10/5/2017

SUMMITCREST COMPLETE 1P55
KM BROKEN BOW 002
SUMMITCREST PRINCESS 0P12

PVF-BF BF26 BLACK JOKER
SVS SAVANNAH URB1
SVS REGINA RBG1

CE	BW	WW	YW	MCE	MILK	MWW	STAY	Adj. BW
11.9	-0.1	75.7	115.4	10.2	21.6	59.4	16.7	74
DOC	CW	YG	MARB	REA	API	TI	Adj. WW	
11.9	38.1	-0.24	0.26	0.75	135.4	77.3	643	

AI bred 1-4-19 to HOOK'S YELLOWSTONE 97Y (2612546). Pasture bred 1-22-19 to 4-15-19 to SVS STOCKADE DZS9 (3275097).

Top 15% WW - Top 15% YW - Top 5 % MCE - Top 25% MWW - Top 25% API

Broken Bow females have made quite the stir in the Angus world for their quality. My Kind O Party is one of the first half-blood daughters to enter into the Simmental breed. She is backed by one of our most influential cow family's, Doll. Look at her EPDs and look at her pedigree. She should become a big-time producer!

Cow Family: Doll

15 SVS SASSAFRAS ECU1

Hetero Black Polled PB SM
Cow ASA 3427459 ECU1 BD: 10/17/2017

WS BEEF KING W107
WS ALL-AROUND Z35
CDI MS HIGH ROLLER 39W

SRS RIGHT-ON 22R
SVS PEPPERMINT CUM1
SVS IRISH CREAM UMB1

CE	BW	WW	YW	MCE	MILK	MWW	STAY	Adj. BW
11.3	1.6	74.9	116.7	6.7	24.3	61.7	19.8	80
DOC	CW	YG	MARB	REA	API	TI	Adj. WW	
12.7	38.6	-0.40	0.01	0.76	135.4	74.0	688	

Lot 15A: 9-29-19 heifer, 74 lbs, SVS Sweet Pea GECU, sire LRS Elevate

Top 20% WW - Top 15% YW - Top 25 % MCE - Top 20% MWW - Top 15% STAY
- Top 20% \$API - Top 25% \$TI

Study the EPDs and study the female. All-Around daughters have made a positive impact on our cowherd and Sassafra is a prime example. She is moderate in frame, deep-bodied, has a beautiful profile and comes with elite figures. She is certain to serve as a cornerstone breeding piece for years to come. Sassafra is the real deal!

Cow Family: What A Doll

16 SVS ALL SHINED UP EAW9

Homo Black Polled PB SM
Cow ASA 3427450 EAW9 BD: 10/23/2017

TRIPLE C SINGLETARY S3H
CCR COWBOY CUT 5048Z
CCR MS 4045 TIME 7322T

SVS GOLD FINGER SLF2
SVS AMAZING GRACE AW09
SVS MISS FRISKY WS09

CE	BW	WW	YW	MCE	MILK	MWW	STAY	Adj. BW
9.0	3.3	81.9	115.0	6.3	24.3	65.2	20.1	85
DOC	CW	YG	MARB	REA	API	TI	Adj. WW	
13.5	33.0	-0.46	0.09	0.85	134.9	77.2	660	

AI bred 1-4-19 to JC ENGINEER 102C (2976529). Pasture bred 1-22-19 to 4-15-19 to SVS STOCKADE DZS9 (3275097).

Top 10% WW - Top 20% YW - Top 30% Milk - Top 10% MWW - Top 15% Doc - Top 25% \$API - Top 15% \$TI

This beautiful, homozygous black Cowboy Cut daughter is hard to part with. She studies with an elite EPD profile and reads with even more quality on foot. We are confident her mating with Engineer will result in premier breeding stock. If you are looking for an elite replacement with genetics from generations of breed greats, look no further than All Shined Up.

Cow Family: Sandy/Kelby



WS ALL-AROUND Z35 sire of Lot 15.



JC ENGINEER 102C service sire of Lot 16.

17 SVS WINDY KNOLL ECAL

Hetero Black Polled PB SM
Cow ASA 3427446 ECAL BD: 10/11/2017

SVS SHENANDOAH ZWNA WS ALL-AROUND Z35
SVS SNIPER BM10 SVS ROSES R RED CALH
SVS WHAT A DOLL MB10 SVS MIMOSA ALH8

CE	BW	WW	YW	MCE	MILK	MWW	STAY	Adj. BW
9.5	2.0	68.6	105.8	6.0	22.3	56.5	19.0	81
DOC	CW	YG	MARB	REA	API	TI	Adj. WW	
13.1	34.9	-0.51	-0.04	0.95	125.9	68.4	617	

AI bred 1-4-19 to LRS ELEVATE 213B (2842534). Pasture bred 1-22-19 to 4-15-19 to SVS STOCKADE DZS9 (3275097).

Top 30% Stay - Top 20% Doc

Windy Knoll is a daughter of Roses R Red, who is featured as Lot 2 in this offering. Sniper genetics are packed with performance while All-Around adds the look. This fall-bred female will make a nice breeding piece for any operation. Take her home and see what these proven, predictable and profitable genetics will do for you.

Cow Family: Roses R Red



SVS ROSES R RED CALH dam of Lot 17.

18 SVS MISS PRISS EZS9

Black Polled PB SM
Cow ASA 3427537 EZS9 BD: 10/8/2017

TJ SHARPER IMAGE 809U KAPPES TRAILBLAZER S516
SVS BADLANDS BSNL SVS COW BELLE ZS09
SVS SUGAR-N-SPICE SNL2 SVS SANDY S019

CE	BW	WW	YW	MCE	MILK	MWW	STAY	Adj. BW
8.3	1.5	67.4	101.6	6.3	24.3	58.0	17.9	76
DOC	CW	YG	MARB	REA	API	TI	Adj. WW	
7.8	29.0	-0.37	-0.13	0.60	116.4	65.3	628	

AI bred 1-4-19 to WLE LAST CALL Y716 (2594235). Pasture bred 1-22-19 to 4-15-19 to SVS STOCKADE DZS9 (3275097).

We love our Badlands-sired cattle and Miss Priss is the only Badlands daughter being offered. Badlands consistently sires cattle that excel in functionality with sound feet and great udders. Miss Priss embodies these traits to the highest degree. Add to that her performance from the Sandy/Kelby cow family, and she should be a highly productive female for years to come.

Cow Family: Sandy/Kelby



SVS SANDY Lot 18 cow family.

19 SVS DAY DREAMER EBZL

Homo Black Polled PB SM
Cow ASA 3427539 EBZL BD: 10/15/2017

MR NLC UPGRADE U8676 DIKEMANS SURE BET
SVS PATRIOT CXT7 SVS NAOMI BZUL
SVS MOLASSES XTP7 SVS MAGNOLIA ZURL

CE	BW	WW	YW	MCE	MILK	MWW	STAY	Adj. BW
10.5	2.1	78.9	114.6	5.3	21.0	60.4	17.0	79
DOC	CW	YG	MARB	REA	API	TI	Adj. WW	
14.0	35.6	-0.57	-0.07	1.07	124.5	73.7	634	

AI bred 1-4-19 to WLE LAST CALL Y716 (2594235). Pasture bred 1-22-19 to 4-15-19 to SVS STOCKADE DZS9 (3275097).

Top 15% WW - Top 20% YW - Top25% MWW - Top 15% Doc

Day Dreamer is a powerful daughter of Patriot, and granddaughter of Humdinger and is the only Patriot daughter to be offered. Performance is built into her pedigree and she should raise a top end calf year in and year out. Longevity runs deep in her genetics. Be sure to circle this striking bred heifer.

Cow Family: Cats Meow



SVS PATRIOT CXT7 sire of Lot 19.

Fall Bred Heifers

20 SVS BLUE MOON ECZ2

Black Polled PB SM
Cow ASA 3427565 ECZ2 BD: 9/29/2017

GW LUCKY ACE 076TS SVS FULL MOON ZSJ2
WLE LAST CALL Y716 SVS CONSTANCE CZS2
WLE TALLULAH N716 SVS VALLEY GIRL ZSP2

CE	BW	WW	YW	MCE	MILK	MWW	STAY	Adj. BW
11.5	2.1	70.9	104.5	6.7	21.8	57.2	16.9	82
DOC	CW	YG	MARB	REA	API	TI	Adj. WW	
9.7	30.1	-0.45	0.00	0.81	126.0	70.4	705	

AI bred 1-4-19 to KOCH BIG TIMBER 685D (3133113). Pasture bred 1-22-19 to 4-15-19 to SVS STOCKADE DZS9 (3275097).

Top 25% MCE

Here's a pedigree with a little different twist. Blue Moon is a Last Call daughter going back to Full Moon and Humdinger on the top side. Need I say more? She is a big, broody female that is the cattleman's kind, with phenomenal performance to boot. She should be a valuable replacement in any herd.

21 SVS WILLOW BREEZE EZSL

Black Polled PB SM
Cow ASA 3380278 EZSL BD: 5/19/2017

ELLINGSON LEGACY M229 SVS HUMDINGER TR21
SVS SHENANDOAH ZWNA SVS MOUNTAIN BEAUTY ZSNL
SVS LADY BUG WNBA SVS SUGAR-N-SPICE SNL2

CE	BW	WW	YW	MCE	MILK	MWW	STAY	Adj. BW
11.2	0.6	54.5	81.8	5.7	26.0	53.1	17.7	81
DOC	CW	YG	MARB	REA	API	TI	Adj. WW	
9.4	21.4	-0.56	-0.18	0.81	114.7	58.8	689	

AI bred 1-4-19 to JC ENGINEER 102C (2976529). Pasture bred 1-22-19 to 4-15-19 to SVS STOCKADE DZS9 (3275097).

Top 15% Milk

Willow Breeze should be staying right here. This blaze-faced beauty puts it all together with style and performance. Some of our most productive sires are packed into the genetics behind this female - Shenandoah and Humdinger, as well as the cow family that produced Badlands. These genetics have been the base of our cowherd for years and will be certain to add value to your herd.

Cow Family: Sugar-N-Spice

22 SVS VERONICA EZSZ

Black Polled PB SM
Cow ASA 3263920 EZSZ BD: 4/16/2017

ELLINGSON LEGACY M229 SVS GOLD FINGER SLP2
SVS SHENANDOAH ZWNA SVS DOGWOOD ZSPZ
SVS LADY BUG WNBA SVS SABRINA SPKZ

CE	BW	WW	YW	MCE	MILK	MWW	STAY	Adj. BW
10.1	1.4	56.1	81.8	5.7	24.2	52.1	17.7	77
DOC	CW	YG	MARB	REA	API	TI	Adj. WW	
10.0	16.0	-0.53	-0.10	0.72	115.9	60.1	570	

AI bred 1-4-19 to LRS ELEVATE 213B (2842534). Pasture bred 1-22-19 to 4-15-19 to SVS STOCKADE DZS9 (3275097).

Top 15% Milk

Veronica is definitely a front pasture queen and will certainly impress on sale day. Shenandoah-sired females are simply highly feminine, maternal, milking mamas! Veronica is moderate-framed, deep-bodied and gentle as a kitten. Her maternal sib, Melody, is being offered as Lot 4. Wouldn't you like to have a whole herd of females like Veronica?

Cow Family: Paula

A little bit of history...

We are proud of our heritage and love the old things that surround us, including these heirloom flowers. These irises, peonies, (pineys as Grandma called them), and roses are very, very old and are still amazingly beautiful!



Lot 23

Top 4% WW - Top 10% YW - Top 10 %
Milk - Top 2% MWW - Top 25% Stay
- Top 5% Doc - Top 15% \$API - Top
10% \$TI

Pretty as a picture! This homozygous black, blaze-faced beauty is one of our very best spring-bred females. Ebony & Ivory has it all. She is good looking and posts an impressive EPD profile. There is plenty of flash, flare and genetic merit in this loose-structured, forage efficient package.

Cow Family: Leader's Red Rose



SVS EBONY & IVORY FAP7 sells as Lot 23.

23 SVS EBONY & IVORY FAP7

Homo Black
Cow ASA 3546139

Polled
FAP7

PB SM
BD: 3/17/2018

TRIPLE C SINGLETARY S3H
CCR COWBOY CUT 5048Z
CCR MS 4045 TIME 7322T

SRS RIGHT-ON 22R
SVS BELLFLOWER APD7
SVS PAULETTE PDY7

CE	BW	WW	YW	MCE	MILK	MWW	STAY	Adj. BW
9.6	3.1	84.0	121.4	5.2	27.8	69.8	19.3	82
DOC	CW	YG	MARB	REA	API	TI		Adj. WW
15.2	42.7	-0.41	0.13	0.91	138.1	80.2		729

AI bred 6-10-19 to TJ JACKPOT 525D (3148740). Pasture bred 6-28-19 to 8-15-19 to SVS STOCKADE DZS9 (3275097).



*A program built by family,
powered by strong cow families...*



My mom, Maxine, and aunt, Madeline, (the Wolfe twins), enjoying a fall sale!

Spring Bred Heifers



COTT RED SILK Lot 24 and 25 cow family.

24 SVS PEACEFUL NIGHT FS8A

Homo Black Polled PB SM
Cow ASA 3546162 FS8A BD: 3/29/2018

SRS RIGHT-ON 22R PVF-BF BF26 BLACK JOKER
SVS REVEILLE BU09 SVS SEA WIND S87A
SVS SNICKERDOODLE US09 COTT RED SILK 887H

CE	BW	WW	YW	MCE	MILK	MWW	STAY	Adj. BW
7.7	2.7	68.8	98.6	3.7	24.5	58.9	21.0	82
DOC	CW	YG	MARB	REA	API	TI	Adj. WW	
10.2	24.7	-0.49	-0.24	0.79	113.5	61.9	693	

AI bred 6-10-19 to TJ JACKPOT 525D (3148740). Pasture bred 6-28-19 to 8-15-19 to SVS STOCKADE DZS9 (3275097).

Top 5% Stay

This broody, homozygous black, blaze-faced Reveille daughter has the phenotypic make up that will make her an excellent replacement. She is moderate, big-bodied and has an incredible profile. Combining Snickerdoodle genetics from the sire's side with Red Silk's longevity on the dam's side has produced Peaceful Night, a rock solid genetic package that should stay in your herd for years to come.

Cow Family: Red Silk

25 SVS POLKA PARTY FAS8

Hetero Black Polled PB SM
Cow ASA 3546100 FAS8 BD: 3/3/2018

MR NLC UPGRADE U8676 SVS KEEP DREAMIN RNB1
SVF ALLEGIANCE Y802 SVS GRETCHEN AS8A
DOUBLE R MISS 29G T18 SVS SEA WIND S87A

CE	BW	WW	YW	MCE	MILK	MWW	STAY	Adj. BW
9.0	3.2	83.1	120.8	5.1	18.3	59.8	14.1	84
DOC	CW	YG	MARB	REA	API	TI	Adj. WW	
12.7	38.0	-0.48	-0.14	0.91	111.8	72.0	687	

AI bred 6-10-19 to TJ JACKPOT 525D (3148740). Pasture bred 6-28-19 to 8-15-19 to SVS STOCKADE DZS9 (3275097).

Top 4% WW - Top 10% YW

Polka Party is a drop dead gorgeous blaze-faced Allegiance daughter that should be staying right here. Her dam, a beautiful Keep Dreamin' female, is a looker too. Polka Party is long and deep, exceptionally correct, and is bred for performance. She is the total package of outstanding genetics, performance and eye-appeal. This is the kind of female to build a herd around.

Cow Family: Red Silk

26 SVS DIXIE LAND FANC

Homo Black Polled 1/2 SM 1/2 AN
Cow ASA 3546095 FANC BD: 3/1/2018

S A V FINAL ANSWER 0035 SVS STINGER XSPZ
S A V PIONEER 7301 SVS PRAIRIE WIND AN9C
S A V BLACKBIRD 5297 SVS KELBYS FIRE N19C

CE	BW	WW	YW	MCE	MILK	MWW	STAY	Adj. BW
9.1	1.9	68.0	104.5	6.0	25.1	59.1	16.2	67
DOC	CW	YG	MARB	REA	API	TI	Adj. WW	
10.9	28.0	-0.19	0.17	0.55	118.7	67.5	602	

AI bred 6-10-19 to LRS ELEVATE 213B (2842534). Pasture bred 6-28-19 to 8-15-19 to SVS STOCKADE DZS9 (3275097).

Top 25% Milk - Top 25% MWW

Here is a stout, half-blood, homozygous black SimAngus™ heifer that is sired by one of the most proven, performance-oriented sires in the Angus breed, SAV Pioneer. She comes from our Kelby cow family that hands down, is one of our very best. Dixie Land brings to the table growth, performance, and multi-generations of proven genetics. Buy these genetics with confidence.

Cow Family: Kelby



27 SVS BELLS & WHISTLES FZXJ

Black Polled 1/2 SM 1/2 AN
Cow ASA 3546094 FZXJ BD: 3/3/2018

S A V FINAL ANSWER 0035
S A V PIONEER 7301
S A V BLACKBIRD 5297

SVF STAR PLAYER T801
SVS KACHINA ZXTJ
SVS PUMPKIN XT1J

CE	BW	WW	YW	MCE	MILK	MWW	STAY	Adj. BW
9.1	1.8	65.8	103.8	5.0	24.8	57.6	15.5	79
DOC	CW	YG	MARB	REA	API	TI	Adj. WW	
11.8	24.2	-0.19	0.19	0.53	118.0	66.9	597	

AI bred 6-10-19 to LRS ELEVATE 213B (2842534). Pasture bred 6-28-19 to 8-15-19 to SVS STOCKADE DZS9 (3275097).

Bells & Whistles is another impressive SimAngus™ half-blood heifer sired by SAV Pioneer. She is great in terms of fleshing ability and body shape, all wrapped up in a moderate package. She will be the kind you can count on year in and year out to raise quality offspring.

Cow Family: Let's Tango



LRS ELEVATE 213B service sire of Lot 27.

28 SVS CHERRY COKE EZXF

Red Polled PB SM
Cow ASA 3427452 EZXF BD: 12/8/2017

WS PRIME BEEF Z8
SVS SUNDANCE CWSA
SVS BROWN SUGAR WS8A

SVS SHARP SHOOTER XPL7
SVS MILKY WAY ZXFA
SVS MAYBELLINE XFWA

CE	BW	WW	YW	MCE	MILK	MWW	STAY	Adj. BW
8.2	2.1	73.4	104.4	4.7	20.2	56.9	18.8	83
DOC	CW	YG	MARB	REA	API	TI	Adj. WW	
6.9	30.0	-0.49	-0.10	0.89	120.2	68.4	703	

AI bred 6-10-19 to ELLINGSON LEGACY M229 (2171761). Pasture bred 6-28-19 to 8-15-19 to SVS STOCKADE DZS9 (3275097).

Cherry Coke is the only red spring-bred female being offered. Her sire, Sundance, has sired spectacular calves and this female is no exception. Sundance was a past high seller in our bull sale and is co-owned with Duck Creek Simmentals in North Dakota. We certainly didn't want to part with this elite female but did so to showcase his progeny. If you are looking for a solid red, top end replacement, Cherry Coke is for you.

29 SVS FOREVER YOUNG EBM8

Homo Black Polled PB SM
Cow ASA 3427511 EBM8 BD: 10/7/2017

HOOK'S YELLOWSTONE 97Y
CLRS AFTER SHOCK 604 A
HOOKS SARITA 4S

W/C WIDE TRACK 694Y
SVS BARE FOOTIN' BMK8
SVS JOKERS DARLIN MKD8

CE	BW	WW	YW	MCE	MILK	MWW	STAY	Adj. BW
9.2	2.5	75.3	113.4	3.6	19.3	56.9	19.3	78
DOC	CW	YG	MARB	REA	API	TI	Adj. WW	
13.0	37.4	-0.40	-0.06	0.81	125.6	70.3	654	

AI bred 6-10-19 to ELLINGSON LEGACY M229 (2171761). Pasture bred 6-28-19 to 8-15-19 to SVS STOCKADE DZS9 (3275097).

Top 20% WW - Top 20% YW

This homozygous black baldy Aftershock daughter has added growth and dimension. Forever Young is phenotypically beautiful with a clean front, exceptional profile and is loaded with flash and flare. We have used Aftershock extensively in our AI program resulting in top quality bulls and females alike. This powerful bred is a prime example of the quality consistently stemming from the Joker's Darlin' cow family. She has a great future ahead of her!

Cow Family: Joker's Darlin

30 SVS ENDLESS LOVE ERM8

Black Polled PB SM
Cow ASA 3427485 ERM8 BD: 10/20/2017

HOOKS TAURUS 24T
HOOK'S YELLOWSTONE 97Y
HOOKS SHEYENNE 77S

BF K065 TALLADEGA
SVS RAMONA RMK8
SVS JOKERS DARLIN MKD8

CE	BW	WW	YW	MCE	MILK	MWW	STAY	Adj. BW
10.9	0.4	67.9	98.3	6.5	22.9	56.7	18.1	68
DOC	CW	YG	MARB	REA	API	TI	Adj. WW	
12.8	31.4	-0.47	-0.12	0.82	122.4	67.4	576	

AI bred 6-10-19 to BBS TRUE JUSTICE B10 (2878160). Pasture bred 6-28-19 to 8-15-19 to SVS STOCKADE DZS9 (3275097).

Top 20% BW

This female is a striking baldy daughter of Yellowstone that posts a modest BW EPD. With chrome wheels and trim, she is a pretty gal! Endless Love comes from the highly productive Joker's Darlin' cow family. These genetics are timed-tested and will add value to your operation.

Cow Family: Joker's Darlin



BBS TRUE JUSTICE B10 service sire of Lot 30.



SVS HEADLINER FZWB sells as Lot 50.

Lot 51

Top 5% WW - Top 10% YW - Top 10% MCE - Top 20% Milk - Top 4% Stay - Top 10% Doc - Top 10% API - Top 10% \$TI

A massive, phenotypically correct Cowboy Cut son that is certain to elevate your program in a positive direction. The What a Doll Cow family is represented extremely strongly in our bull offering. Shiftin' Gears brings to the table an outstanding genetic profile that ranks in the top 10% of the breed for \$API. He's homozygous black and is backed by a cow family that can't be beat.

Cow Family: What A Doll/Doll



SVS SHIFTIN' GEARS FYUD sells as Lot 51.

50 SVS HEADLINER FZWB

Homo Black Polled 1/2 SM 1/2 AN
Bull ASA 3578643 FZWB BD: 10/11/2018

S A V BISMARCK 5682
S A V BRUISER 9164
S A V MISS BOBBIE 7463

SVS RELOAD WPF7
SVS HIGH HEELS ZWMB
SVS DELILAH WMBB

CE	BW	WW	YW	MCE	MILK	MWW	STAY	Adj. BW
12.0	0.6	70.0	113.0	7.9	23.6	58.6	15.9	79
DOC	CW	YG	MARB	REA	API	TI	Adj. WW	
12.1	34.1	-0.21	0.18	0.60	126.9	71.4	545	

51 SVS SHIFTIN' GEARS FYUD

Homo Black Polled PB SM
Bull ASA 3578640 FYUD BD: 9/27/2018

TRIPLE C SINGLETARY S3H
CCR COWBOY CUT 5048Z
CCR MS 4045 TIME 7322T

SRS RIGHT-ON 22R
SVS SUN DOWN YUMD
SVS HONEY COMB UMBD

CE	BW	WW	YW	MCE	MILK	MWW	STAY	Adj. BW
11.4	2.2	82.3	121.0	8.1	25.3	66.4	21.2	79
DOC	CW	YG	MARB	REA	API	TI	Adj. WW	
14.9	41.4	-0.42	0.10	0.96	144.1	79.8	755	

52 SVS WOODEN NICKEL FCU1

Homo Black Polled PB SM
Bull ASA 3578546 FCU1 BD: 10/2/2018

MCM TOP GRADE 018X SRS RIGHT-ON 22R
OVAL F ALL TIME A322 SVS PEPPERMINT CUM1
OVAL F YIN Y26 SVS IRISH CREAM UMB1

CE	BW	WW	YW	MCE	MILK	MWW	STAY	Adj. BW
10.1	1.7	70.5	109.0	6.7	30.4	65.6	19.0	80
DOC	CW	YG	MARB	REA	API	TI	Adj. WW	
8.5	33.6	-0.45	0.07	0.82	133.6	73.2	821	

Top 10% MWW - Top 3% Milk

Wooden Nickel is a purebred son out of Oval F All Time that checks all the boxes. He is long-bodied, powerful in his build, and has that herd sire look. He is backed by a young Right On daughter that is certain to have the brightest of futures in our herd. We came very close to keeping Wooden Nickel for our own use, but decided to let him go since we've always been committed to offering our very best genetics. This homozygous black sire out of the What A Doll family is one to get excited about.

Cow Family: What A Doll/Doll



SVS WOODEN NICKEL FCU1 sells as Lot 52.

53 SVS APPLE JACK FDZB

Homo Black Polled PB SM
Bull ASA 3578577 FDZB BD: 9/26/2018

RCR AUGUSTUS R54 SVS SELDOM SEEN AP8H
ASR AUGUSTUS Z2165 SVS CORAL BELL DZWB
ASR MS JORDAN W916 SVS HIGH HEELS ZWMB

CE	BW	WW	YW	MCE	MILK	MWW	STAY	Adj. BW
13.3	1.5	67.4	101.0	7.4	20.6	54.3	17.8	86
DOC	CW	YG	MARB	REA	API	TI	Adj. WW	
13.3	25.9	-0.59	-0.10	0.94	125.0	67.2	650	

Top 15% CE - Top 3% WW - Top 15% Doc - Top 10% TI

Here's a homozygous black Augustus son that will be an outstanding candidate to utilize on heifers. He ranks in the top 15% of the breed for calving ease and backs its up with ample growth. On foot he has an incredibly stylish look and balance and has a quiet demeanor. Apple Jack's dam, a first calf heifer, did a super job here!

Cow Family: What A Doll/Doll



OVAL F ALL TIME A322 sire of Lot 52.



ASR AUGUSTUS Z2165 sire of Lot 53.





SVS LIGHTNIN' STRIKE FBZJ sells as Lot 54.

Lot 55

Top 25% MWW - Top 20% Doc - Top 20% REA

This herd sire prospect is a striking, homozygous black, blazed-faced son of our powerhouse herd sire, Patriot. New Frontier offers tremendous length, volume and growth in a moderate package. His dam, a Lets Tango daughter, hits a home run every time. New Frontier should sire white-faced offspring that always bring a premium on sale day.

Cow Family: Let's Tango



SVS NEW FRONTIER FR1J sells as Lot 55.

54 SVS LIGHTNIN' STRIKE FBZJ

Homo Black Polled PB SM
Bull ASA 3578638 FBZJ BD: 9/14/2018

TRIPLE C SINGLETARY S3H
CCR COWBOY CUT 5048Z
CCR MS 4045 TIME 7322T

SVS VICTORY ZL7E
SVS BRIGITTE BZUJ
SVS HARMONY ZU1J

CE	BW	WW	YW	MCE	MILK	MWW	STAY	Adj. BW
11.1	2.2	73.3	106.1	7.6	27.0	63.6	18.0	79
DOC	CW	YG	MARB	REA	API	TI	Adj. WW	
13.5	34.6	-0.43	0.14	0.88	135.2	75.2	680	

55 SVS NEW FRONTIER FR1J

Homo Black Polled PB SM
Bull ASA 3578603 FR1J BD: 11/9/2018

MR NLC UPGRADE U8676
SVS PATRIOT CXT7
SVS MOLASSES XTP7

BF K065 TALLADEGA
SVS RENEE R12J
SCC LETS TANGO 124J

CE	BW	WW	YW	MCE	MILK	MWW	STAY	Adj. BW
9.5	2.5	72.2	102.7	5.3	24.2	60.3	14.9	84
DOC	CW	YG	MARB	REA	API	TI	Adj. WW	
13.1	35.4	-0.59	-0.18	0.99	109.4	66.5	589	

56 SVS HIGH TIDE FDN2

Homo Black Polled PB SM
Bull ASA 3578581 FDN2 BD: 9/23/2018

HOOK'S YELLOWSTONE 97Y SVS RELOAD WPF7
LRS ELEVATE 213B SVS COOL BREEZE DNH2
LRS MS DUAL FOCUS 213Z SVS IRISH TALLADEGA NHE2

CE	BW	WW	YW	MCE	MILK	MWW	STAY	Adj. BW
10.7	1.8	72.7	109.8	6.1	23.8	60.0	16.8	86
DOC	CW	YG	MARB	REA	API	TI		Adj. WW
7.3	27.9	-0.47	-0.02	0.89	125.3	71.5		729

Top 30% WW - Top 30% YW - Top 25% MWW - Top 35% REA

High Tide is a big, stout son of LRS Elevate with lots of pizzazz. This purebred will be destined to add growth, muscle and profitability to his calf crop. He backs up elite growth figures with an immense amount of power and stoutness. This blaze-faced, homozygous black herd sire is one to seriously consider. His first calf heifer dam sure did an outstanding job here!



LRS ELEVATE 213B sire of Lot 56.

57 SVS HIGH COUNTRY FA35

Hetero Black Polled PB SM
Bull ASA 3578533 FA35 BD: 9/25/2018

HOOKS TAURUS 24T SVS RELOAD WPF7
HOOK'S YELLOWSTONE 97Y SVS JOSEPHINE AT35
HOOKS SHEYENNE 77S SVS TIFFANY TJ35

CE	BW	WW	YW	MCE	MILK	MWW	STAY	Adj. BW
9.6	2.2	81.2	120.8	5.8	29.3	69.8	18.3	85
DOC	CW	YG	MARB	REA	API	TI	Adj. WW	
11.5	39.2	-0.46	-0.03	0.89	129.0	76.3	800	

Top 10% WW - Top 10% YW - Top 2% MWW - Top 4% Milk

High Country is a powerful Hook's Yellowstone son that will be a tremendous breeding piece for any operation. He is another purebred bull in our offering that offers lots of growth, power and maternal ability. His dam is a beautiful Reload daughter whose maternal granddam, Cardinal, was an outstanding donor. These genetics are designed for profit.



SVS HIGH COUNTRY FA35 sells as Lot 57.



*Specializing in
unique, practical
and powerful
Simmental genetics
since 1976.*



58 SVS LONE PINE FBT7

Hetero Black
Bull ASA 3578586

Polled
FBT7

PB SM
BD: 9/24/2018

TJ SHARPER IMAGE 809U
SVS BADLANDS BSNL
SVS SUGAR-N-SPICE SNL2

WS PRIME BEEF Z8
SVS BUCKLE BUNNY BTN7
SVS THERESA TNF7

CE	BW	WW	YW	MCE	MILK	MWW	STAY	Adj. BW
8.8	1.5	61.5	93.7	5.5	25.0	55.7	17.5	84
DOC	CW	YG	MARB	REA	API	TI	Adj. WW	
7.3	21.2	-0.40	0.04	0.67	123.2	66.1	671	

Top 25% Milk

Lone Pine is the only son bring offered of our very popular sire, SVS Badlands, a Sharper Image son. Badlands has made an incredible mark on our breeding program, and Lot 58 is a great representation of the quality he consistently produces. With balanced EPDs, structural correctness and eye-appeal, Lone Pine should find many friends on sale day.

SVS LONE PINE FBT7 sells as Lot 58.



59 SVS STRAIGHT TALK FS8C

Hetero Black
Bull ASA 3578573

Polled
FS8C

PB SM
BD: 9/15/2018

TRIPLE C SINGLETARY S3H
CCR COWBOY CUT 5048Z
CCR MS 4045 TIME 7322T

PVF-BF BF26 BLACK JOKER
SVS SAMANTHA S87C
COTT RED SILK 887H

CE	BW	WW	YW	MCE	MILK	MWW	STAY	Adj. BW
9.8	2.1	73.9	102.7	5.4	26.3	63.2	21.7	81
DOC	CW	YG	MARB	REA	API	TI	Adj. WW	
13.1	31.6	-0.46	0.01	0.92	133.5	72.1	687	

Top 15% Milk - Top 15% MWW - Top 3% Stay - Top 25 \$API

Cowboy Cut gave us an incredible set of bulls this year and Straight Talk is no exception. With amazing growth and through-the-roof Stayability, as well as his incredible depth, volume and muscle, this herd sire is unique. His dam, a proven Black Joker daughter, has consistently produced sale highlights in the past and has given us numerous daughters that we have retained in our herd. His maternal granddam, Red Silk, remained in our herd 19 years, raising a natural calf each year and was also a prolific donor. It was a sad day to see her go. Buy these genetics with absolute confidence!

Cow Family: Red Silk

SVS STRAIGHT TALK FS8C sells as Lot 59.



COTT RED SILK 887H maternal grandam of Lot 59.



60 SVS HANG`EM HIGH FZPD

Homo Black Polled PB SM
Bull ASA 3578652 FZPD BD: 10/5/2018

HOOKS TAURUS 24T SVS HUMDINGER TR21
HOOK'S YELLOWSTONE 97Y SVS RHINESTONE ZPLD
HOOKS SHEYENNE 77S SVS PRINCESS PLD3

CE	BW	WW	YW	MCE	MILK	MWW	STAY	Adj. BW
10.5	1.7	83.7	122.7	6.1	26.3	68.1	17.9	84
DOC	CW	YG	MARB	REA	API	TI	Adj. WW	
9.6	40.5	-0.48	-0.12	1.02	125.9	75.9	877	

Top 4% WW - Top 15% Milk - Top 3% MWW - Top 15% REA

Hang 'em High is a striking baldie packed with muscle mass and dimension. He is destined to make a positive economic impact on his progeny by adding ample growth and maternal ability. He is backed by a beautiful Humdinger daughter who is a proven donor and producer of elite stock. This homozygous black Yellowstone son is a fine example of the offspring Rhinestone consistently produces.

Cow Family: Rhinestone



SVS HANG`EM HIGH FZPD sells as Lot 60.



SVS SANDY S019 maternal grandam of Lot 61.



SVS RHINESTONE ZPLD dam of Lot 60.

61 SVS FLAGSTAFF FY09

Homo Black Polled PB SM
Bull ASA 3578562 FY09 BD: 9/15/2018

TRIPLE C SINGLETARY S3H SVS GOLD FINGER SLF2
CCR COWBOY CUT 5048Z SVS LEATHER N LACE YS09
CCR MS 4045 TIME 7322T SVS SANDY S019

CE	BW	WW	YW	MCE	MILK	MWW	STAY	Adj. BW
10.0	2.5	75.9	106.5	7.1	23.0	60.9	21.0	82
DOC	CW	YG	MARB	REA	API	TI	Adj. WW	
12.7	29.3	-0.45	0.12	0.77	138.8	75.3	668	

Top 20% WW - Top 35% YW - Top 20% MWW - Top 15% \$API - Top 20% \$TI

Here's another truly impressive CCR Cowboy Cut son. Study Flagstaff in terms of his genetic profile and he will be a source for genetic advancement in terms of his figures. He is out of a proven Gold Finger daughter that traces back to our highly productive Kelby cow family. This cow family has produced outstanding donors such as Sandy, Lily, Snickerdoodle, and Right As Rain. Flagstaff is homozygous black and is designed to sire the kind of offspring that move your herd to the next level.

Cow Family: Sandy/Kelby

62 SVS TIDAL WAVE FZ09

Homo Black Polled PB SM
Bull ASA 3578629 FZ09 BD: 9/13/2018

GW-WBF SUBSTANCE 820Y KAPPES TRAILBLAZER S516
GIBBS 3009A ELEMENT SVS COW BELLE ZS09
GIBBS 9128W MABELLE N341 SVS SANDY S019

CE	BW	WW	YW	MCE	MILK	MWW	STAY	Adj. BW
10.0	1.1	71.2	109.1	7.7	24.7	60.2	16.5	80
DOC	CW	YG	MARB	REA	API	TI	Adj. WW	
8.9	37.0	-0.52	-0.02	0.95	125.1	71.9	649	

Top 35% WW - Top 35% YW - Top 15% MCE - Top 25% MWW - Top 25% REA

The Element sons will undoubtedly be highlights in this offering. This homozygous black herd sire stems from the Sandy/Kelby cow family, which only produces the right kind of cattle for today's market. Tidal Wave will add growth and muscle to his progeny, ultimately equating to more dollars returned to his new owner.

Cow Family: Sandy/Kelby



SVS SNICKERDOODLE US09 dam of Lots 63, 64.

63 SVS DEADWOOD FU9A

Homo Black Polled PB SM
Bull ASA 3578572 FU9A BD: 9/11/2018

LRS PREFERRED STOCK 370C
SVS J914 PREFERRED BEEF
SRS G733 GLIMMER

SVS KEEP DREAMIN RNB1
SVS SNICKERDOODLE US09
SVS SANDY S019

CE	BW	WW	YW	MCE	MILK	MWW	STAY	Adj. BW
10.5	1.7	68.4	98.9	7.7	21.6	55.8	21.9	76
DOC	CW	YG	MARB	REA	API	TI	Adj. WW	
9.8	21.6	-0.45	-0.14	0.62	126.3	65.5	736	

Top 2% Stay - Top 15% MCE

Here's a flash back. Once in a while we dip back to produce oldies, but goodies. Deadwood is an ET son of our tremendous Snickerdoodle donor and Preferred Beef. This homozygous black, blaze-faced herd sire, combined with his proven pedigree and solid EPDs, will be sure to take your program in a positive direction. Snickerdoodle progeny are highly sought after and continue to over-perform. Use Deadwood to sire replacement females that anyone should be proud to own.

Cow Family: Snickerdoodle/Sandy/Kelby

64 SVS REST EASY FU09

Homo Black Polled PB SM
Bull ASA 3578636 FU09 BD: 9/29/2018

HOOKS TAURUS 24T
HOOK'S YELLOWSTONE 97Y
HOOKS SHEYENNE 77S

SVS KEEP DREAMIN RNB1
SVS SNICKERDOODLE US09
SVS SANDY S019

CE	BW	WW	YW	MCE	MILK	MWW	STAY	Adj. BW
11.7	0.4	72.3	104.0	8.3	24.4	60.4	19.7	55
DOC	CW	YG	MARB	REA	API	TI	Adj. WW	
12.4	30.1	-0.46	-0.09	0.83	129.7	70.9	625	

Top 20% BW - Top 10% MCE - Top 25% Milk - Top 15% MCE - Top 25% MWW - Top 20% Stay - Top 25% Doc

Rest Easy is unique. He is a stout, homozygous black, blazed-face bull that will be certain to be a sale highlight. He is perfect from the side, has all the rib shape and power you can ask for, is moderate in frame, soft-made, and is extremely calm. Not to mention, he is incredible in terms of maternal traits and is backed by a first-class cow family, Snickerdoodle. Combining her genetics with Yellowstone certainly produced a winner!

Cow Family: Snickerdoodle/Sandy/Kelby



SVS REST EASY FU09 sells as Lot 64.

65 SVS CYCLONE FSNL

Homo Black Homo Polled PB SM
Bull ASA 3578606 FSNL BD: 9/13/2018

TRIPLE C SINGLETARY S3H
CCR COWBOY CUT 5048Z
CCR MS 4045 TIME 7322T

SS GOLDMINE L42
SVS SUGAR-N-SPICE SNL2
SVS NORLENE NLF2

CE	BW	WW	YW	MCE	MILK	MWW	STAY	Adj. BW
8.6	2.1	64.6	88.7	5.3	27.7	59.9	18.5	85
DOC	CW	YG	MARB	REA	API	TI	Adj. WW	
13.4	24.4	-0.46	0.11	0.77	127.6	68.9	614	

Top 25% MWW - Top 15% Doc

Cyclone is a soggy, long-bodied, homozygous black Cowboy Cut son who is a direct son of Sugar-N-Spice. She is 13 years old and we can still count on her to produce top tier breeding stock year in and year out. Cyclone is a maternal sib to Badlands, who was purchased by Accelerated Genetics in a prior sale. Quality, productivity and longevity runs strong in his genetics.

Cow Family: Sugar N Spice



SVS BADLANDS maternal brother to Lot 65.

66 SVS LONE RANGER FZSL

Homo Black Polled PB SM
Bull ASA 3578627 FZSL BD: 9/30/2018

HOOKS TAURUS 24T SVS HUMDINGER TR21
HOOK'S YELLOWSTONE 97Y SVS MOUNTAIN BEAUTY ZSNL
HOOKS SHEYENNE 77S SVS SUGAR-N-SPICE SNL2

CE	BW	WW	YW	MCE	MILK	MWW	STAY	Adj. BW
11.1	0.7	68.7	101.4	6.3	28.0	62.3	17.1	72
DOC	CW	YG	MARB	REA	API	TI	Adj. WW	
10.3	29.8	-0.48	-0.07	0.84	123.8	69.7	699	

Top 25% BW - Top 10% Milk - Top 15% MWW

This homozygous black Yellowstone son is truly picture perfect. He displays a striking profile, has tons of body capacity, and is flawless in terms of structural soundness. Physically he is one of the most impressive bulls in the entire offering. Add to that Lone Ranger's calving ease, ample growth and milking ability, and this bull is one to seriously consider to move your herd to the next level.

Cow Family: Sugar N Spice



SVS LONE RANGER FZSL sells as Lot 66.

67 SVS ROUGH N READY FASC

Homo Black Polled PB SM
Bull ASA 3578623 FASC BD: 9/12/2018

TRIPLE C SINGLETARY S3H MR NLC UPGRADE U8676
CCR COWBOY CUT 5048Z SVS VIRGINIA BELLE ASHA
CCR MS 4045 TIME 7322T SVS SCARLETT SH2A

CE	BW	WW	YW	MCE	MILK	MWW	STAY	Adj. BW
10.1	1.9	75.4	108.4	6.2	27.2	64.8	18.9	77
DOC	CW	YG	MARB	REA	API	TI	Adj. WW	
14.5	37.8	-0.49	0.11	1.05	135.7	76.2	658	

Top 20% WW - Top 30% YW - Top 10% MWW - Top 20% \$API - Top 10% \$TI

Rough N Ready has proven genetics that will certainly add profit to your operation. This outstanding homozygous black ET son of CCR Cowboy Cut is out of our ultra-feminine Upgrade donor, Virginia Belle, who is co-owned with Sandy Acres Simmentals in Nebraska. Both Upgrade & Cowboy Cut have been leading sources of profit-oriented genetics for several years in the Simmental breed. Here's an opportunity to put some mainstay genetics in your herd.

Cow Family: Virginia Belle/Black Vanessa



CCR COWBOY CUT 5048Z sire of Lot 67.





SVS PEG LEG FRM8 sells as Lot 68.

68 SVS PEG LEG FRM8

Homo Black Polled 1/2 SM 1/2 AN
Bull ASA 3578646 FRM8 BD: 9/25/2018

S A V BRILLIANCE 8077
PVF INSIGHT 0129
PVF MISSIE 790

BF K065 TALLADEGA
SVS RAMONA RMK8
SVS JOKERS DARLIN MKD8

CE	BW	WW	YW	MCE	MILK	MWW	STAY	Adj. BW
10.1	0.7	67.1	101.5	5.2	20.1	53.6	12.4	78
DOC	CW	YG	MARB	REA	API	TI	Adj. WW	
13.8	49.1	-0.31	-0.07	1.09	101.5	62.7	628	

Top 20% Doc

Here is a half-blood SimAngus™ bull out of the very popular PVF Insight. He possesses an immense amount of body shape and an elite look from the side. His 14-year-old dam still has perfect feet and legs, and a solid udder. Peg Leg is homozygous black and stems from the rock solid cow family, Joker's Darlin', the same family that produced Lot 1, Ravishing Ruby. These genetics never let you down.

Cow Family: Jokers Darlin



PVF INSIGHT 0129 sire of Lot 68.

69 SVS CRIPPLE CREEK FCZM

Hetero Black Polled PB SM
Bull ASA 3578542 FCZM BD: 9/30/2018

TRIPLE C SINGLETARY S3H
CCR COWBOY CUT 5048Z
CCR MS 4045 TIME 7322T

WS PRIME BEEF Z8
SVS RAVISHING RUBY CZTM
SVS FIREFLY ZTM8

CE	BW	WW	YW	MCE	MILK	MWW	STAY	Adj. BW
12.3	1.8	81.7	117.5	8.1	24.1	64.9	21.2	84
DOC	CW	YG	MARB	REA	API	TI	Adj. WW	
11.4	34.4	-0.46	0.19	1.02	150.3	82.2	700	

Top 10% WW - Top 15% YW - Top 10% MWW - Top 10% MCE - Top 4% Stay - Top 15% Marb - Top 4% \$API - Top 3% \$TI

Here's a strong, balanced genetic profile that should offer advancement in multiple areas of your operation. Cripple Creek is out of the Lot 1 female that is certain to make a large impact as a donor for her new owner. Buy this smooth-patterned, deep-bodied sire with confidence. Cripple Creek will be popular on sale day.

Cow Family: Jokers Darlin



SVS RAVISHING RUBY CZTM dam of Lot 69.

70 SVS REV IT UP FCAR

Hetero Black Polled PB SM
Bull ASA 3578530 FCAR BD: 10/21/2018

WS PRIME BEEF Z8 MR ISHEE CATALYST
SVS SUNDANCE CWSA SVS PASTURE QUEEN CAR8
SVS BROWN SUGAR WS8A SVS CHARDONNAY ARM8

CE	BW	WW	YW	MCE	MILK	MWW	STAY	Adj. BW
8.0	2.4	80.2	117.3	3.6	21.5	61.5	19.1	88
DOC	CW	YG	MARB	REA	API	TI	Adj. WW	
7.8	35.2	-0.50	0.01	0.97	129.7	75.4	718	

Top 10% WW - Top 15% YW - Top 25% Stay

A blaze-faced Sundance son that has the look, power, and muscle mass that has made his sire very popular, and he is the only Sundance son being offered. Rev It Up is certain to add weight and ultimately dollars to his calves while having a quality look that will be valued in female retention. This cow family has been consistently producing the right kind of offspring in our herd for many years, and Rev It Up should do the same in yours.

Cow Family: Jokers Darlin



SVS SUNDANCE CWSA sire of Lot 70.



SVS BROWN SUGAR Lot 72 cow family.

71 SVS FOGGY MOUNTAIN FYP8

Homo Black Polled PB SM
Bull ASA 3546128 FYP8 BD: 5/27/2018

ELLINGSON LEGACY M229 SRS RIGHT-ON 22R
SVS SHENANDOAH ZWNA SVS BLING YPM8
SVS LADY BUG WNBA SVS PARTY TIME PMK8

CE	BW	WW	YW	MCE	MILK	MWW	STAY	Adj. BW
10.4	0.6	45.8	69.1	6.5	28.0	50.9	19.3	75
DOC	CW	YG	MARB	REA	API	TI	Adj. WW	
15.6	13.3	-0.51	-0.10	0.66	116.9	55.2	600	

Top 25% BW - Top 10% Milk - Top 4% Doc

If you are looking for an age-advantage bull, Foggy Mountain is the bull for you. This homozygous black, 17-month-old Shenandoah son is moderate-framed, big-bodied and ready to go to work. Like his sire, this calving-ease bull is smooth and should be an excellent female producer. Females out of his maternal cow family, Joker's Darlin', are hard to beat. Just look at Lot 1...Ravishing Ruby!

Cow Family: Jokers Darlin

72 SVS FULL BORE FCAW

Hetero Black Polled PB SM
Bull ASA 3546082 FCAW BD: 4/8/2018

SVS SHENANDOAH ZWNA SVS VICTORY ZL7E
SVS SNIPER BM10 SVS HONEYSUCKLE CAWS
SVS WHAT A DOLL MB10 SVS WHISTLIN' DIXIE AWSA

CE	BW	WW	YW	MCE	MILK	MWW	STAY	Adj. BW
9.3	3.1	64.6	99.5	5.4	23.1	55.4	17.8	88
DOC	CW	YG	MARB	REA	API	TI	Adj. WW	
17.5	29.2	-0.52	-0.09	0.89	116.8	63.5	684	

Top 1% Doc

Full Bore is a powerfully stout 18-month-old bull out of our SVS Sniper herdsire. The Sniper cattle are outstanding physically and when combined with the female power from the time-tested Brown Sugar and Silk cow families, he's bound to produce the right type of cattle in demand in today's market.

Cow Family: Brown Sugar/Red Silk

73 SVS BANK ROLL FCSH

Homo Black Polled PB SM
Bull ASA 3578559 FCSH BD: 10/3/2018

NICHOLS LEGACY G151 WS ALL-AROUND Z35
ELLINGSON LEGACY M229 SVS FOXY ROXY CSHA
ELLINGSON MS PSTOCK K58 SVS SCARLETT SH2A

CE	BW	WW	YW	MCE	MILK	MWW	STAY	Adj. BW
11.6	1.1	74.1	113.1	5.9	24.8	61.8	18.9	84
DOC	CW	YG	MARB	REA	API	TI	Adj. WW	
12.6	39.3	-0.56	-0.08	1.05	129.7	72.4	719	

Top 25% WW - Top 20% YW - Top 25% Milk - Top 15% MWW - Top 25% Doc

Bank Roll is a homozygous black Olie son whose dam is a beautifully-uddered, highly feminine WS All-Around daughter. This bull offers a tremendous amount of growth and stoutness while ranking high in his maternal figures. The Black Vanessa cow family has produced winner after winner, and this bull should be the same.

Cow Family: Black Vanessa



SVS REVEILLE BU09 sire of Lot 74.

74 SVS ROLLIN' HILLS FBLG

Homo Black Polled PB SM
Bull ASA 3578653 FBLG BD: 11/1/2018

SRS RIGHT-ON 22R MR NLC UPGRADE U8676
SVS REVEILLE BU09 SVS BUTTERFLY BLG2
SVS SNICKERDOODLE US09 SVS CATS MEOW LGC2

CE	BW	WW	YW	MCE	MILK	MWW	STAY	Adj. BW
9.8	1.9	70.6	103.5	6.2	24.2	59.5	15.5	78
DOC	CW	YG	MARB	REA	API	TI	Adj. WW	
11.9	29.4	-0.52	-0.12	0.85	114.8	67.7	704	

Top 30% Milk - Top 30% MWW - Top 30% Doc

Rollin' Hills is a homozygous black Reveille son. He is one of the younger bulls in the offering and is destined to have a bright future. He has a striking look from the side and is powerful in his build. With ample growth and style stemming from his paternal granddam, Snickerdoodle, he should be a real female producer. He is the sleeper in the offering and by sale day we suspect he will have several friends.

Cow Family: Cats Meow

75 SVS LOST RIVER FURL

Homo Black Polled PB SM
Bull ASA 3578626 FURL BD: 9/13/2018

HOOK'S YELLOWSTONE 97Y PVF-BF BF26 BLACK JOKER
KOCH BIG TIMBER 685D SVS NEW DAY URL2
KOCH MS HOOKS BOY SVS ROXANNE RLG2

CE	BW	WW	YW	MCE	MILK	MWW	STAY	Adj. BW
10.7	0.5	63.1	93.9	7.1	28.3	59.8	19.5	84
DOC	CW	YG	MARB	REA	API	TI	Adj. WW	
11.5	27.1	-0.40	-0.04	0.77	127.3	66.8	626	

Top 25% BW - Top 10% Milk - Top 20% MCE - Top 25% MWW - Top 20% Stay

Here is an outstanding, homozygous black heifer bull candidate. The Big Timber offspring have caused quite the stir last spring and Lost River embodies the strengths of his sire, low birth weight cattle with ample growth and tremendous power. Here's an opportunity to put cow family genetics in your herd that have been producing the right kind for us for over 18 years.

Cow Family: Cats Meow

76 SVS RIVER BEND FYRG

Homo Black Polled PB SM
Bull ASA 3578556 FYRG BD: 10/19/2018

SVS SHENANDOAH ZWNA SVS HUMDINGER TR21
SVS SNIPER BM10 SVS CANDLE LIGHT YRLG
SVS WHAT A DOLL MB10 SVS ROXANNE RLG2

CE	BW	WW	YW	MCE	MILK	MWW	STAY	Adj. BW
7.7	3.5	68.3	101.9	4.6	25.7	59.8	16.9	90
DOC	CW	YG	MARB	REA	API	TI	Adj. WW	
13.1	31.6	-0.52	-0.19	0.91	107.7	62.5	726	

Top 20% Milk - Top 25% MWW - Top 20% Doc

River Bend is Shenandoah Valley bred through and through. This homozygous black, blaze-faced Sniper son is out of a beautiful, deep-bodied, highly productive Humdinger female. She traces back to our Cats Meow cow who has made a huge impact on our cowherd for many, many years. He should add growth and maternal ability to any herd.

Cow Family: Cats Meow

77 SVS DOMINO FUP1

Homo Black Polled PB SM
Bull ASA 3578560 FUP1 BD: 10/28/2018

MR NLC UPGRADE U8676 SVS GUTS & BUTT RM10
SVS BELL RINGER ANL3 SVS MYSTIQUE UP1D
SVS NORRICE NLJ3 SVS PERFECTION PB1D

CE	BW	WW	YW	MCE	MILK	MWW	STAY	Adj. BW
9.9	2.1	65.3	94.8	6.4	18.4	51.0	17.6	84
DOC	CW	YG	MARB	REA	API	TI	Adj. WW	
8.9	29.8	-0.50	-0.20	0.82	111.8	61.4	525	

Top 30% MCE

Domino is a blaze-faced, homozygous black Bell Ringer son that will flat out make incredible females. Here is a direct son that will be certain to sire high quality replacements that will keep you in business for years to come. Only two Bell Ringer sons are being offered since we lost him at a young age. It's true...only the good die young. Add to his genetics the Doll cow family and you've got a keeper here.

Cow Family: Doll



SVS BELL RINGER ANL3 sire of Lot 77.

78 SVS DEAD AIM FXN1

Hetero Black Polled PB SM
Bull ASA 3578600 FXN1 BD: 10/2/2018

SRS J914 PREFERRED BEEF SVS GOLD FINGER SLF2
SRS RIGHT-ON 22R SVS SNICKERS XN10
SRS G720 GILLIAN SVS DOLLS JOKER NB10

CE	BW	WW	YW	MCE	MILK	MWW	STAY	Adj. BW
9.1	2.5	67.3	101.6	4.4	24.2	57.8	19.7	82
DOC	CW	YG	MARB	REA	API	TI	Adj. WW	
12.0	24.3	-0.47	-0.12	0.68	119.8	64.6	699	

Top 20% Stay

Dead Aim is a long-sided herd sire with balanced EPDs, who also possesses a time-tested pedigree that has made a large, positive impact on our cowherd. He's a Right On son out of a Goldfinger daughter that traces back to our Doll cow family. Longevity, fertility and predictability run strong in these genetics.

Cow Family: Doll's Joker/Doll



SVS FAIR SHAKE FDN1 sells as Lot 79.



SVS BACK COUNTRY FWP7 sells as Lot 80.

79 SVS FAIR SHAKE FDN1

Homo Black Polled PB SM
Bull ASA 3578631 FDN1 BD: 10/21/2018

LRS ELEVATE 213B SVS MILESTONE ZSP7
SVS CLEAR WATER DBZ9 SVS FROSTY HOLLOW DN10
SVS BLACK GYPSY BZ09 SVS DOLLS JOKER NB10

CE	BW	WW	YW	MCE	MILK	MWW	STAY	Adj. BW
11.3	0.2	67.9	102.1	6.6	23.8	57.7	19.3	76
DOC	CW	YG	MARB	REA	API	TI	Adj. WW	
7.2	28.7	-0.47	-0.16	0.85	124.5	67.2	723	

Top 20 % BW - Top 25% Stay

Fair Shake is a massive Clear Water son that is long-bodied, big-footed, and as impressive as any in terms of muscle shape. This blaze-faced, homozygous black herd sire excels in calving ease, has ample growth and maternal ability, and is as quiet as a kitten. If you are looking for power and muscle look no further. His first calf heifer mama from the Doll family hit it out of the park!

Cow Family: Doll's Joker/Doll

80 SVS BACK COUNTRY FWP7

Hetero Black Polled PB SM
Bull ASA 3578552 FWP7 BD: 9/1/2018

GW-WBF SUBSTANCE 820Y SRS RIGHT-ON 22R
GIBBS 3009A ELEMENT SVS MAID O THE MIST WPD7
GIBBS 9128W MABELLE N341 SVS PAULETTE PDY7

CE	BW	WW	YW	MCE	MILK	MWW	STAY	Adj. BW
9.3	2.0	75.0	116.4	5.4	29.9	67.4	16.1	80
DOC	CW	YG	MARB	REA	API	TI	Adj. WW	
13.6	40.4	-0.50	0.07	0.97	128.3	75.7	749	

Top 25% WW - Top 15% YW - Top 3% MWW - Top 3% Milk - Top 20% REA - Top 20% \$TI

Here is a Gibbs Element son that is a true outlier in terms of muscle and raw power. Back Country offers a tremendous amount of growth and length, and will be destined to add real value to his progeny. If you are in search of a six-frame bull with an immense amount of terminal merit and milking ability, take a strong look at this herd sire candidate.

Cow Family: Leader's Red Rose

81 SVS RANCHERO FPD7

Hetero Black Polled PB SM
Bull ASA 3578544 FPD7 BD: 9/15/2018

HOOK'S YELLOWSTONE 97Y BF K065 TALLADEGA
KOCH BIG TIMBER 685D SVS PAULETTE PDY7
KOCH MS HOOKS BOY SVS LEADERS RED ROSE

CE	BW	WW	YW	MCE	MILK	MWW	STAY	Adj. BW
11.9	-0.7	61.3	90.0	7.3	30.3	60.8	18.6	76
DOC	CW	YG	MARB	REA	API	TI	Adj. WW	
11.6	28.1	-0.38	0.08	0.63	134.7	70.2	611	

Top 25% CE - Top 10% BW - Top 20% MCE - Top 3% Milk - Top 15% MWW - Top 25% \$API

The Big Timber sire group will not disappoint on sale day. Ranchero is an excellent choice to utilize on heifers without sacrificing terminal merit and is one of the highest milk EPD bulls in this offering. The Leader's Red Rose cow family consistently outperforms and this blaze-faced herd sire is no exception. Need outstanding replacement females? Look no further.

Cow Family: Leader's Red Rose

82 SVS BUCKAROO FDZ7

Hetero Black Polled PB SM
Bull ASA 3578539 FDZ7 BD: 11/6/2018

LRS ELEVATE 213B SVS SHENANDOAH ZWNA
SVS CLEAR WATER DBZ9 SVS MOUNTAIN AIR DZP7
SVS BLACK GYPSY BZ09 SVS SHIMMY N SHAKE ZPD7

CE	BW	WW	YW	MCE	MILK	MWW	STAY	Adj. BW
9.8	1.4	69.5	105.2	4.8	23.5	58.1	18.8	84
DOC	CW	YG	MARB	REA	API	TI	Adj. WW	
8.5	28.4	-0.49	-0.03	0.87	127.1	69.8	697	

Buckaroo is another solid son of our junior herd sire, SVS Clear Water. This potential herd sire is big-bodied, long, and rugged in his design. He has balanced EPDs across the board with ample growth and maternal traits. The Leader's Red Rose cow family always produces the right kind and Buckaroo is no exception.

Cow Family: Leader's Red Rose

83 SVS PINE KNOT FCR7

Hetero Black Polled PB SM
Bull ASA 3546108 FCR7 BD: 4/8/2018

SVS SHENANDOAH ZWNA SVS SHARP SHOOTER XPL7
SVS SNIPER BM10 SVS GINGERBREAD CRD7
SVS WHAT A DOLL MB10 SVS RITZY RDY7

CE	BW	WW	YW	MCE	MILK	MWW	STAY	Adj. BW
8.1	3.0	65.5	96.0	5.9	22.6	55.2	18.1	85
DOC	CW	YG	MARB	REA	API	TI		Adj. WW
17.3	27.7	-0.52	-0.15	0.86	112.1	62.0		723

Top 1% Doc

Pine Knot is a powerful, rugged Sniper son that comes in an age-advantage package. Backed by cow family genetics from one of our very first donors, Leaders Red Rose, he's designed to last. Turn him out and watch him go to work for you. He is certain to hold and up and be ready to go to work for you.

Cow Family: Leader's Red Rose



SVS LILY XS19 maternal grandam of Lot 84.

84 SVS EXPEDITION FZ19

Hetero Black Polled PB SM
Bull ASA 3578628 FZ19 BD: 9/21/2018

GW-WBF SUBSTANCE 820Y SAND RANCH HAND
GIBBS 3009A ELEMENT SVS DAY LILY ZX19
GIBBS 9128W MABELLE N341 SVS LILY XS19

CE	BW	WW	YW	MCE	MILK	MWW	STAY	Adj. BW
10.5	1.8	68.6	105.3	7.6	24.9	59.2	15.3	84
DOC	CW	YG	MARB	REA	API	TI	Adj. WW	
11.6	34.7	-0.58	0.04	1.07	124.5	71.2	627	

Top 15% MCE - Top 25% Milk - Top 20% MWW

The Lily cow family matched up perfectly with Gibbs Element here. An impressive genetic profile is represented in Expedition that is equally impressive on foot. He's stout and powerful, deep and thick, with a blaze face. He's excels in growth and maternal ability. Use this versatile bull to produce calves that push the scales or to sire replacement females that you'll be proud to own.

Cow Family: Lily/Kelby

85 SVS COMMON SENSE FDUP

Homo Black Polled PB SM
Bull ASA 3578523 FDUP BD: 11/6/2018

LRS ELEVATE 213B SVS SHENANDOAH ZWNA
SVS CLEAR WATER DBZ9 SVS SÖFIE DUP7
SVS BLACK GYPSY BZ09 SVS HONEY BEE UPL7

CE	BW	WW	YW	MCE	MILK	MWW	STAY	Adj. BW
10.7	0.4	70.2	108.1	6.1	23.9	58.9	18.7	77
DOC	CW	YG	MARB	REA	API	TI	Adj. WW	
7.7	30.5	-0.50	-0.08	0.96	128.2	70.6	730	

Top 25% - Top 20% REA

A big-topped, square-hipped son of Clear Water. He is out of a first calf daughter of Shenandoah, Sofie, who will continue to have a very bright future and is offered as Lot 9. With balanced EPDs this calving ease, homozygous black herd sire should produce calves that excel in today's market. Combining the Kelby, Doll, and Pansy cow families produced a winner with Common Sense.

Cow Family: Pansy/Black Ruby

86 SVS PEACE KEEPER FSP7

Homo Black Polled PB SM
Bull ASA 3578596 FSP7 BD: 10/15/2018

HOOKE'S YELLOWSTONE 97Y SRS J914 PREFERRED BEEF
CLRS AFTER SHOCK 604 A SVS SWEETIE SPL7
HOOKS SARITA 4S SVS PANSY PLF7

CE	BW	WW	YW	MCE	MILK	MWW	STAY	Adj. BW
11.3	1.6	73.0	109.3	6.1	24.1	60.5	21.8	83
DOC	CW	YG	MARB	REA	API	TI	Adj. WW	
11.2	37.3	-0.39	-0.08	0.76	132.5	70.1	681	

Top 25% MWW - Top 2% Stay

This homozygous black After Shock son offers a balanced EPD profile with off-the-charts Stability and traces back to the highly productive Black Ruby Cow family. If you are searching for power and maternal strength, Peace Keeper is a prime candidate. This cow family is tried and true, and always produces highly productive, front pasture cattle.

Cow Family: Pansy/Black Ruby

87 SVS CHISEL FYS7

Homo Black Polled PB SM
Bull ASA 3578620 FYS7 BD: 9/20/2018

HOOKS TAURUS 24T SVS HUMDINGER TR21
HOOK'S YELLOWSTONE 97Y SVS BEACH BABY YSP7
HOOKS SHEYENNE 77S SVS SWEETIE SPL7

CE	BW	WW	YW	MCE	MILK	MWW	STAY	Adj. BW
11.7	1.3	76.7	113.9	6.9	25.9	64.2	18.7	85
DOC	CW	YG	MARB	REA	API	TI	Adj. WW	
8.1	36.7	-0.46	-0.09	0.91	128.9	73.1	733	

Top 25% MCE - Top 15% Milk - Top 10% MWW

Chisel is a Yellowstone son that ranks off-the-charts in terms of maternal traits. He is a prime herd sire to utilize for female production while not sacrificing terminal merit. This homozygous black, blaze-faced Humdinger grandson is a prime example of what these genetics produce.

Cow Family: Pansy/Black Ruby



HOOK'S YELLOWSTONE 97Y sire of Lot 87.



GIBBS 3009A ELEMENT sire of Lot 89.

88 SVS TOP RUNG FZUP

Homo Black Polled PB SM
Bull ASA 3578644 FZUP BD: 10/19/2018

TRIPLE C SINGLETARY S3H SVS RELOAD WP7
CCR COWBOY CUT 5048Z SVS DOE EYES ZUP7
CCR MS 4045 TIME 7322T SVS HONEY BEE UPL7

CE	BW	WW	YW	MCE	MILK	MWW	STAY	Adj. BW
9.7	3.0	83.9	123.8	6.8	29.0	70.8	19.4	85
DOC	CW	YG	MARB	REA	API	TI	Adj. WW	
14.6	42.2	-0.43	0.08	1.00	136.6	79.5	786	

Top 4% WW - Top 10% YW - Top 25% MCE - Top 1% MWW - Top 20% Stay - Top 20% \$API - Top 10% API

Good bulls are scattered throughout the catalog and Top Rung is one of the best. This Cowboy Cut son is incredible in terms of his figures and backs up his EPD profile with a first-class look. This homozygous black bull stems from a never-fail cow family, Pansy and Black Ruby. They just keep producing the keepin' kind.

Cow Family: Pansy/Black Ruby

89 SVS RAMBLER FUS7

Homo Black Polled PB SM
Bull ASA 3578648 FUS7 BD: 9/14/2018

GW-WBF SUBSTANCE 820Y SVS KEEP DREAMIN RNB1
GIBBS 3009A ELEMENT SVS LULLABY USP7
GIBBS 9128W MABELLE N341 SVS SWEETIE SPL7

CE	BW	WW	YW	MCE	MILK	MWW	STAY	Adj. BW
10.8	1.1	69.7	104.5	8.0	24.8	59.6	17.0	79
DOC	CW	YG	MARB	REA	API	TI	Adj. WW	
11.7	35.1	-0.52	0.01	0.99	127.8	71.8	697	

Top 15% MCE - Top 20% Milk - Top 25% MWW

Rambler is a homozygous black, elite purebred son out of Gibbs Element that comes from the rock solid Black Ruby cow family. These Element sons are STOUT! They will be certain to have a lot of friends on sale day. And Rambler, with his balanced EPDs, is no exception!

Cow Family: Pansy/Black Ruby

90 SVS TOP DOLLAR FBZ7

Homo Black Polled PB SM
Bull ASA 3578589 FBZ7 BD: 9/30/2018

MR NLC UPGRADE U8676 SVS SHENANDOAH ZWNA
SVS BELL RINGER ANL3 SVS MOUNTAIN LAUREL BZU7
SVS NORRICE NLJ3 SVS REFLECTIONS ZUR7

CE	BW	WW	YW	MCE	MILK	MWW	STAY	Adj. BW
10.6	2.0	74.0	111.8	6.8	26.1	63.1	17.6	84
DOC	CW	YG	MARB	REA	API	TI	Adj. WW	
9.9	37.3	-0.52	-0.15	0.97	120.1	69.3	710	

Top 25% WW - Top 25% YW - Top 25% MCE - Top 15% Milk - Top 15% MWW

Top Dollar is a no-holes kind of bull sired by Bell Ringer and is one of only two Bell Ringer sons to be offered. Top Dollar is backed by a beautiful Shenandoah female who will continue to make a large impact on our cowherd for years to come. This homozygous black herd sire prospect, with solid, balanced EPDs across the board, is sure to be an asset to any herd, purebred or commercial.



SVS SNIPER BM10 sire of Lot 91.

91 SVS DOUBLE SHOT FYN2

Homo Black Polled PB SM
Bull ASA 3578529 FYN2 BD: 10/23/2018

SVS SHENANDOAH ZWNA SRS RIGHT-ON 22R
SVS SNIPER BM10 SVS HOPE YNF2
SVS WHAT A DOLL MB10 SVS NICHOLE NFC2

CE	BW	WW	YW	MCE	MILK	MWW	STAY	Adj. BW
7.5	3.1	66.3	101.6	4.2	28.9	61.9	19.7	84
DOC	CW	YG	MARB	REA	API	TI		Adj. WW
12.9	29.1	-0.50	-0.13	0.86	116.7	63.7		660

Top 5% Milk - Top 15% MWW - Top 20% Stay - Top 20% Doc

The Sniper sons will be sure to impress on sale day. Double Shot backs his strong maternal predictors with tons of visual performance and stoutness. Use this homozygous black, blaze-faced herd sire on purebred or commercial cows to help keep your calves from getting lost in a sea of black on sale day.



CLRS AFTER SHOCK 604 A sire of Lot 92.

92 SVS PERFECT STORM FCZZ

Homo Black Polled PB SM
Bull ASA 3578601 FCZZ BD: 10/10/2018

HOOK'S YELLOWSTONE 97Y SVS FULL MOON ZSJ2
CLRS AFTER SHOCK 604 A SVS MELODY CZSZ
HOOKS SARITA 4S SVS DOGWOOD ZSPZ

CE	BW	WW	YW	MCE	MILK	MWW	STAY	Adj. BW
10.2	1.8	77.0	111.3	4.3	22.8	61.2	18.7	85
DOC	CW	YG	MARB	REA	API	TI	Adj. WW	
12.7	35.0	-0.40	-0.02	0.75	128.8	73.3	694	

Top 15% WW

Perfect Storm is the right kind of herd sire. He's homozygous black and homozygous good! Reluctantly, we're offering his dam, Melody, a Humdinger granddaughter, as Lot 4. Those of you who follow our program know the positive impact Humdinger genetics have had on our herd. If you are looking for a herd sire to add growth take a strong look at this After Shock son. Performance and power run deep in his genetics.



SVS SHENANDOAH ZWNA sire of Lot 93.

93 SVS CASH FLOW FRF2

Homo Black Polled PB SM
Bull ASA 3578614 FRF2 BD: 11/17/2018

ELLINGSON LEGACY M229 BF K065 TALLADEGA
SVS SHENANDOAH ZWNA SVS SERENITY RFZ2
SVS LADY BUG WNBA SVS BETTINA

CE	BW	WW	YW	MCE	MILK	MWW	STAY	Adj. BW
10.1	1.1	58.3	85.0	5.2	22.4	51.5	15.8	77
DOC	CW	YG	MARB	REA	API	TI	Adj. WW	
10.1	25.5	-0.55	-0.16	0.79	110.2	60.1	661	

Cash Flow is one of the younger herd sire candidates in the offering but by sale day he will make his presence known. This homozygous black Shenandoah son is deep and soft-made, is awesome in terms of feet and leg structure, and has all the pieces to make an outstanding herd bull. His dam, a beautiful Talladega daughter, ties this package together. This is the last offering of Shenandoah offspring since we lost him to wild cherry last year. Cash Flow is a maternal sib to Lot 13. Don't miss out on Shenandoah genetics. They'll be a welcome addition to any herd.

Allied Opportunities

Delivering the very best genetics and customer service.

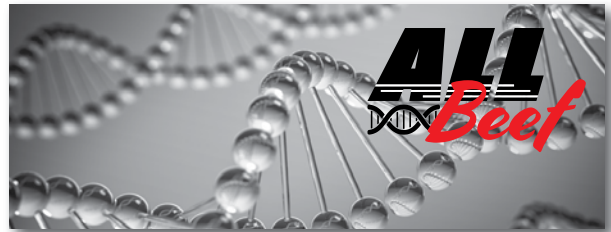
ALLIED SEMEN AND GENETICS

Dominate value and unequaled selection.
Contact us about options for 2019.



ALL BEEF, LLC

A revolutionary new plan for the beef genetics business.
Become a part of this growing team!



ALLIED FEEDING PARTNERS, LLC

Seedstock providers doing what is right for their
customers, their industry and their future.



FEEDER CATTLE MARKETING

Reach out to Clint Berry and his team for experienced and
professional value-added options.



PROFESSIONAL DATA SERVICES

Is your business getting the most value from your data?
We can help.



FUTURE-FOCUSED GENETIC AUDITS

Genetics are a 10-20 year investment.
Advance to the next level with an Allied genetic audit.



Allied opportunities are focused on the future of genetic improvement and service - Join our team!



WWW.ALLIEDGENETICRESOURCES.COM

MARTY ROPP
406-581-7835

CLINT BERRY
417-844-1009

ROCKY FORSETH
406-590-7984

COREY WILKINS
256-590-2487

LEOMA WELLS
559-696-4941

Shenandoah Valley Semen and Embryos Available Private Treaty



SVS BADLANDS ASA 2947416



SVS SUNDANCE ASA 3137055



SVS RAW HIDE ASA 3000007



SVS KING PIN ASA 2650864



SVS SNICKERDOODLE ASA 2494168



SVS BROWN SUGAR ASA 2562863



Thank you for coming to the sale.



ALLIED
GENETIC RESOURCES
PO Box 6, Huntley, MT 59037

Presorted
First Class
US Postage
PAID
SlateGroup

Shenandoah's Shining Stars



FALL SALE

October 19, 2019 at 1:00 pm in Quicksburg, VA