



LOT 58



LOT 75



LOT 1

SHENANDOAH'S
SHINING STARS
Spring Sale

SATURDAY, APRIL 24, 2021
AT THE FARM | QUICKSBURG, VA | 1:00 PM EST

90+ Simmental & SimAngus Cattle
SPRING COW-CALF PAIRS, SPRING & FALL BRED FEMALES, READY-TO-BREED HEIFERS,
MATURE HERD SIRE, LONG YEARLING & YEARLING BULLS



Visit the historic Shenandoah Valley and take in the beautiful colors of the season and enjoy the nearby historic sites. Close area attractions include, Virginia Museum of Civil War: New Market State Historical Park / Shenandoah Valley Travel Association [New Market] / Andrew Zirkle Mill [Forestville] / Showalter's Orchard [Timberville] / Shenandoah Caverns [Quicksburg]

Directions to the Sale

From the North:

From I-81 take Mt. Jackson Exit# 273. Turn **RIGHT** off the ramp. Turn **LEFT** on S. Middle RD. Proceed through the next stop sign to a 4-way stop at Forestville. Go straight through the intersection onto RT. 42 South (Senedo RD.) Go approximately 0.3 and turn right on S. Middle RD. Farm is second lane on the **RIGHT**. (6 miles from interstate).

From the South:

From I-81 N take New Market Exit# 264. Turn **LEFT** off the ramp onto RT. 211 West. Turn **Right** at the stoplight at Timberville onto RT. 42 North (Senedo RD.) Turn **LEFT** on S. Middle RD. Farm is second lane on the **RIGHT**. (9 miles from interstate).

DO NOT FOLLOW GPS WHEN COMING FROM THE SOUTH. IT IS INCORRECT.



Sale Managed by, Ruble Cattle Services

Jeremie Ruble, 406-581-7940 / rublecattleservices@gmail.com
1525 140th Street Corydon, IA 50060 / www.facebook.com/RubleCattleServices

www.rublecattleservices.com

SHENANDOAH'S SHINING STARS *Spring Sale*

SATURDAY, APRIL 24, 2021
AT THE FARM | QUICKSBURG, VA | 1:00 PM EST

WELCOME FELLOW CATTLEMEN AND CATTLEWOMEN!

It's sale time and we're SUPER excited about this offering. It's the best yet, top to bottom. Please join us Saturday, April 24th at 1:00 pm at the farm.

Spring in the Shenandoah Valley is spectacular. The Valley is teeming with new life...green leaves, magnificent flowers, and newborn critters!

We've been breeding Simmentals for 44 years in the mountains of rural Virginia. This herd is our pride and joy. I interact with the cattle daily and know them inside and out.

They're treated with respect, well-cared for, and always eat before we do. Our motto is "Home of the Keepin' Kind" and the cattle in this offering are definitely keepers! We're committed to sharing our top genetics and you can buy with confidence.

Many fads have come and gone in this industry, but we've continued to breed proven, practical, predictable cattle that thrive in many environments. We use dynamite new sires as well as mainstay sires who've stood the test of time. You'll see many generations of superior old cow families in the pedigrees. Genetics and EPDs change quickly, but one thing is certain, regardless of the numbers on paper, these cattle are outstanding in the pasture. Cattle pay our bills and these cattle flat out perform...and as an added bonus, they're pleasing to the eye. We appreciate our customers who believe not just in our cattle, but the program behind them.

These beauty-gorgeous Ladies of the Valley are high maternal, performance females from rock-solid cow families. They're "pasture pretty" and should excel as unique donors and highly productive brood cows. If you want through the roof numbers, breed them to hot new sires and watch their genetic potential explode. Having spring and fall



Lisa Zirkle, Owner

calving herds gives us flexibility to keep our calving season tight. If a heifer needs a little more grow time before breeding, we hold her over to breed early the next season.

The bulls are athletes, developed in Virginia range conditions, not in a dry lot. They're designed to efficiently convert grass to meat, thrive on fescue, travel rough country, and withstand the wide weather extremes experienced in these mountains.

We also have unique embryos from powerful donors and semen from outstanding sires. We'll be having an on-line genetics sale a bit later this spring. Watch our website for details. These are one-of-a-kind genetics you won't find anywhere else.

Please visit our website for the on-line catalog and videos and contact me with any questions. Our video auction is held in a 1860s barn. Sale time is an extended family reunion where friends gather to talk cow. It continually amazes us how many long-term friendships develop from the simple purchase of a cow.

A sincere thanks to those good-hearted, dedicated friends who help make this sale possible, with special thanks to Barry Armstrong for his help year-round.


Cattle will be available for viewing after 3 pm Friday, April 23. Precautions will be taken to promote the well-being of our customers on sale day. Stay safe, healthy and happy my friends. Hope to hear from you sale day!

Hope to see you soon! - Lisa Zirkle



**SHENANDOAH VALLEY
SIMMENTALS**

Lisa Zirkle, Owner | 540-335-1885 (cell)
3691 S Middle Road Quicksburg, VA 22847
Fax: 540-740-3014 | Email: lisaz1@shentel.net
Barry Armstrong, 540-975-1474

 Shenandoah Valley Simmentals, Boers, and Tunis
www.shenandoahvalleysimmentals.com

WELCOME

On behalf of Ruble Cattle Services and Shenandoah Valley Simmentals, we would like to welcome you to this year's spring sale. We have the great pleasure of working with Miss Lisa Zirkle as a sales management team. I have always admired this great program in the past both as a sales consultant and a former Eastern Field Representative for the American Simmental Association. It is truly remarkable to work with such a storied program who has been breeding Simmental cattle in the mountains of rural Virginia since 1976. Their motto "Home of the Keepin' Kind" could not be more accurate. The bulls are perfectly developed out in the open range and because of this they are athletic and ready to breed cows as soon as you take them home. Both the bulls and females are from top of the line cow families proven to work on fescue and in range conditions. The entire offering is a great blend of maternal and performance with forage converting efficiency bred in and time tested! When you purchase cattle from Shenandoah Valley Simmentals you are making an investment in a program that has been here in the past and will be here long into the future. This sale offering will be one of the best in the country for late season bulls and top end females in all stages of production. It is hard to find this many front-end pairs anywhere in the country. Miss Lisa has done a masterful job of breeding and developing the lots in this year's productions sale. We are also excited about the handpicked guest consigners and their cattle. Please feel free to contact any of our sale management team with regards to any questions you may have. We are here to serve you in any capacity.

- Jeremie Ruble, Ruble Cattle Services



406-581-7940 (cell)
515-850-8741
rubicattleservices@gmail.com
www.rubicattleservices.com



SALE CONSULTANTS & STAFF

Jeremie Ruble, Ruble Cattle Services, cell 406-581-7940
Jeremie Ruble, Ruble Cattle Services, alt. number 515-850-8741
Lisa Zirkle, Shenandoah Valley Simmentals 540-335-1885
Craig Kaisand, RCS Sale Consultant 641-891-9666
Martin Macqueen, Consultant 540-839-9494
Martin Macqueen, alt. number 540-965-2199
Dalton Lundy, Consultant 502-727-6898
Jeff Stansberry, Auctioneer 615-479-1852
Phil Richardson, Ringman 865-250-1375
Brody Stansberry, Ringman 615-772-6520
Jeff Marsh, Ringman 540-229-0754

Sale Day Phone 540-740-2530
Sale Day Phone 540-740-2527

Lowell Caplinger, Trucking 540-560-9293
Dr. Justin Hill, Herd Veterinarian 540-879-2581

SALE LOCATION

Shenandoah Valley Simmentals
3691 S. Middle Road
Quicksburg, VA 22847

Directions and sale map available on the inside front cover.

VIDEOS

Videos of all the lots will be available prior to the sale at
www.dvauction.com and ShenandoahValleySimmentals.com



SALE MANAGER

Ruble Cattle Services
Jeremie Ruble, Cell 406-581-7940
Jeremie Ruble, alt. number 515-850-8741
1525 140th Street Corydon, IA 50060
rubicattleservices@gmail.com
www.facebook.com/RubleCattleServices
www.rubicattleservices.com

TERMS AND CONDITIONS

All Animals will be sold in accordance with suggested guidelines of the American Simmental Association.

ANNOUNCEMENTS

Announcements made sale day take precedence over printed material in the catalog or other printed material associated with the sale.

SALE REGISTRATION AND PAYMENT

Buyer numbers will be issued with a valid ID, and payment is due the day of the sale, unless prior arrangements have been made. Timely payment of purchases is much appreciated.

HOUSING YOUR PURCHASE

Bulls and females will be fed and cared for free of charge for one week following the sale and will be housed at a rate of \$4.00 per day thereafter until you pick up your purchase. All animals must be picked up by May 15, 2021 to allow SVS space to develop new cattle.

INSURANCE

Insurance will be available sale day or by asking any of the team members. We strongly recommend Jame Kreiger 812-208-0956



We are proud of our heritage and our farm's history. We strive to preserve the past to honor those before us.

LIABILITY

All persons attending the sale do so at their own risk. Shenandoah Valley Simmentals assumes no responsibility, legal or otherwise, for personal injury or loss while attending the sale, or for damages, illnesses, accidents or theft. All cattle are at the purchaser's risk as soon as sold. Assistance will be given in loading and shipping of cattle, but no risk is assumed by anyone associated with the sale.

ACCOMMODATIONS

Quality Inn Shenandoah Valley..... 540-740-3141
 162 W Old Cross Rd, New Market, VA 22844
 Holiday Inn Express Woodstock..... 540-459-5000
 1130 Motel Dr, Woodstock, VA 22664
 Courtyard by Marriott 540-432-3031
 1890 Evelyn Byrd Ave, Harrisonburg, VA 22801

REGISTRATION AND UPDATED EPDS

All cattle will be registered with the American Simmental Association. Please note EPDs may change from the time the sale book is printed until the registration papers are transferred. EPDs printed in the catalog were pulled from IGS on April 14, 2021. Shenandoah Valley Simmentals will transfer cattle to the buyer at the seller's expense after full payment is received. Buyers must provide the sale clerk with complete information for transferring registration certificates.

HERD HEALTH

All females will sell with proper health certificates for immediate interstate shipment. The bred females have been pregnancy examined and are confirmed safe, unless otherwise posted or announced. For cattle leaving Virginia, a Certificate of Veterinary Inspection will be available for immediate shipment. Cattle that require additional tests will be conducted within one week of the sale at the buyer's expense. Each animal will be at the purchaser's risk immediately following the auction.

LIVE BROADCAST

Dustin Hedrick, *DVAuction* 662-574-9433
 Bid live online at www.dvauction.com

Bid Online **DVAuction**

BULL GUARANTEE

All bulls have passed a complete breeding soundness examination performed by a veterinarian. All bulls are guaranteed for breeding soundness and injury for the first breeding season, defined as 90 days from the first turnout, barring abuse, neglect and poor management practices. If a replacement bull is needed, one of equal value will be provided. If a replacement bull is not available, a sale credit will be provided to use at the next SVS sale minus the documented salvage value of the previous purchase.

SEMEN INTEREST

Shenandoah Valley Simmentals will be selling full possession and 70% semen interest of all bulls and retaining 30% semen interest. The buyer has full control, full possession, 100% of the salvage value and 70% semen interest. Any bulls that Shenandoah Valley Simmentals wishes to collect for in-herd use semen will be done at the buyer's convenience and Shenandoah Valley Simmental's expense. This will affect very few bulls.

GUEST CONSIGNORS

Heishman Cattle Company
 Allen Heishman, 540-335-1174
 7781 Orkney Grade
 MT. Jackson, VA 22842
alheish@gmail.com

Hunigan Farm
 Bill Hunigan, 865-712-0851
 766 Shipley Ferry Rd.
 Blountville, TN 37617
bill.hunigan@mcgillengineers.com

Duck Creek Simmentals

Dustin Buckman, 701-290-5069
 11804 34th St. SW
 Dickinson, ND 58601

FEATURE COW FAMILIES



SVS SNICKERDOODLE US09
PB SM / ASA# 2494168
SVS KEEP DREAMIN RNB1 X SVS SANDY S019



SVS WHAT A DOLL MB10
PB SM / ASA# 2161707
PVF-BF BF26 BLACK JOKER X PVF-BF BG10 DOLL BE22



SVS RIGHT AS RAIN ASOA
PB SM / ASA# 2947439
MR NLC UPGRADE U8676 X SVS SANDY S019



SVS SANDY S019
PB SM / ASA# 2371234
BLACK IRISH KANSAS X COTT KELBY 019K



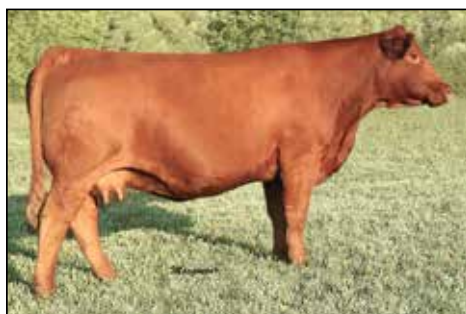
SVS LILY XS19
PB SM / ASA# 2591380
SVS HUMDINGER TR21 X SVS SARAH S19K



COTT KELBY 019K
PB SM / ASA# 2064474
MR BEEF E141 X COTTONWOOD ENHANCED 809D



SVS LADY BUG WNBA
PB SM / ASA# 2536068
CNS DREAM ON L186 X SVS DOLLS JOKER NB10



SVS BROWN SUGAR WS8A
PB SM / ASA# 2542863
GWS EBONYS TRADEMARK 6N X SVS SEA WIND S87A



COTT RED SILK 887H
PB SM / ASA# 1975403
BBS ZIMA D55 X NICHOLS BEAT 85U



SVS NATALIE NDW7
PB SM / ASA# 2202896
BF K030 RED SNAPPER X SVS LEADERS RED LADY

FEATURE SIRES



SVS BADLANDS BSNL
3/4 SM 1/4 AN / ASA# 2947416
TJ SHARPER IMAGE 809U X SVS SUGAR-N-SPICE SNL2



SVS RAWHIDE BXPZ
PB SM / ASA# 3000007
MR NLC UPGRADE U8676 X SVS SONG BIRD XPFZ



SVS HUMDINGER TR21
PB SM / ASA# 2452973
CNS DREAM ON L186 X SVS REBEKAH RM21



SVS BELL RINGER ANL3
PB SM / ASA# 2875231
MR NLC UPGRADE U8676 X SVS NORRICE NLJ3



SVS SHENANDOAH ZWNA
PB SM / ASA# 2652950
ELLINGSON LEGACY M229 X SVS LADY BUG WNBA



SVS RELOAD WPF7
PB SM / ASA# 2542822
SRS RIGHT-ON 22R X SVS RUBY BLACK PF7A



**SHENANDOAH VALLEY
SIMMENTALS**

Lisa Zirkle, Owner | 540-335-1885 (cell)
www.shenandoahvalleysimmentals.com

**Shenandoah Valley Semen and Embryos
Available Private Treaty**

SPRING COW-CALF PAIRS



LOT 1

Open, ready to flush!

Unique, eye-catching, Red Star, powerful, wide-hipped! Red baldies have been in high demand all over the country. Here is a dark red, star-faced donor who features breed legends in her pedigree. You can use any of the popular red bulls on the market and make highly sought after red and red baldie bulls and heifers. This is truly a sale feature. She sells open and ready to flush to the bull of your choice!

1

PB SM

POLLED

Tattoo

CZTM

ASA#

3136954

DOB

9/18/15

svs **RAVISHING RUBY** CZTM

WS BEEF KING W107

WS PRIME BEEF Z8

HSF MISS SKY 87U

SVS KEEP DREAMIN RNB1

SVS FIREFLY ZTM8

SVS TWILIGHT TMK8

WS BEEF MAKER R13

WS MISS DREAMBOAT T17

ER BIG SKY 545B

HSF FORTUNATAS QUO 59S

CNS DREAM ON L186

SVS DOLLS JOKER NB10

KENCO/MF POWERLINE 204L

SVS JOKERS DARLIN MKD8

Adj. BW	Adj. WW	CE	BW	WW	YW	ADG	MCE	Milk	MWW	EPDs %
80	745	11.6	1.8	87.3	134.9	0.30	7.9	21.5	65.1	
		40		15	15	15	15		35	
Stay	Doc	CW	YG	Marb	BF	REA	Shr	API	TI	EPDs %
19.1	4.0	18.7	-0.52	0.06	-0.084	1.08	-0.33	137.8	82.3	
15			10			15		30	25	

SPRING COW-CALF PAIRS

2

SVS SECRET PASSION AFW7

PB SM

POLLED

Tattoo

AFW7

ASA#

2828031

DOB

3/23/13

SAND RANCH HAND

SVS RAM ROD UPF7

SVS RUBY BLACK PF7A

CH CAUFITIME 8C

SVS RED PASSION

SVS MADAME W107

WHEATLAND BULL 131L

SAND LUCKY CHARMER

BLACK IRISH KANSAS

SVS RUBY RED

DS CAUFITIME T41 72X

CH PEACHES N CREAM W45

ALPINE POLLED PROTO

HCF LADY S107

Adj. BW	Adj. WW	CE	BW	WW	YW	ADG	MCE	Milk	MWW	EPDs %
76	796	8.0	3.5	69.2	105.6	0.23	5.1	28.3	62.9	
								20	45	
Stay	Doc	CW	YG	Marb	BF	REA	Shr	API	TI	EPDs %
13.9	7.4	28.7	-0.53	0.03	-0.130	0.89	-0.14	110.5	68.6	
			10		2					

2A: Bull Calf / ASA# 3876192 / DOB: 3/28/21 / Tattoo: JAF7

Adj. BW: 82# / Sired by SVS HIGH FLYER FASB (ASA# 3578599)

CE 9.5 | BW 2.8 | WW 79.3 | YW 118.0 | API 130.5 | TI 77.5

Black Blaze, Hetero Black. Secret Passion is a beautiful, wide-hipped, high maternal, black blaze cow with a proven old school pedigree of cattle that perform in the real world. She's a daughter of a highly productive donor, Red Passion. She sells with a black blaze-face bull calf sired by our Homozygous Black Cowboy Cut Son.

3

SVS COTTON CANDY BRD7

1/2 SM

1/2 AN

POLLED

Tattoo

BRD7

ASA#

3000063

DOB

10/7/14

S A V FINAL ANSWER 0035

S A V PIONEER 7301

S A V BLACKBIRD 5297

BF K065 TALLADEGA

SVS RITZY RDY7

SVS LEADERS RED ROSE

SITZ TRAVELER 8180

S A V EMULOUS 8145

BOYD NEW DAY 8005

S A V BLACKBIRD 1082

WHF DESPERADO 212G

TJ 23H

BOLD LEADER

SVS MISS EYE APPEAL

Adj. BW	Adj. WW	CE	BW	WW	YW	ADG	MCE	Milk	MWW	EPDs %
82	676	8.1	2.6	76.3	114.7	0.24	4.4	27.5	65.6	
				45				15	25	
Stay	Doc	CW	YG	Marb	BF	REA	Shr	API	TI	EPDs %
15.3	11.6	33.8	-0.15	0.15	-0.034	0.52	-0.27	112.4	70.8	

3A: Heifer Calf / ASA# 3876191 / DOB: 3/23/21 / Tattoo: JBR7

Adj. BW: 83# / Sired by CCR COWBOY CUT 5048Z (ASA# 2703910)

CE 9.8 | BW 2.9 | WW 88.0 | YW 127.8 | API 133.7 | TI 80.9

Solid Black, Homo Black, Half-blood. While we strive to produce the best purebreds, we do also make a few Sim Angus. Cotton Candy is a solid black, long sided, high maternal female with a beautiful heifer calf sired by Cowboy Cut. These are highly sought after genetics as Cowboy Cut is no longer on the open market and semen in breeders tanks goes up in price every day!

4

SVS HONEYSUCKLE CAWS

PB SM

POLLED

Tattoo

CAWS

ASA#

3136941

DOB

11/1/15

SRS RIGHT-ON 22R

SVS VICTORY ZL7E

SVS BLACK RUBY LB7B

ELLINGSON LEGACY M229

SVS WHISTLIN` DIXIE AWSA

SVS BROWN SUGAR WS8A

SRS J914 PREFERRED BEEF

SRS G720 GILLIAN

BLACK IRISH KANSAS

SVS RUBY RED

NICHOLS LEGACY G151

ELLINGSON MS PSTOCK K58

GWS EBONYS TRADEMARK 6N

SVS SEA WIND S87A

Adj. BW	Adj. WW	CE	BW	WW	YW	ADG	MCE	Milk	MWW	EPDs %
81	663	10.6	2.1	73.1	109.7	0.23	5.2	28.7	65.2	
								15	35	
Stay	Doc	CW	YG	Marb	BF	REA	Shr	API	TI	EPDs %
17.6	14.3	28.4	-0.49	-0.02	-0.114	0.88	-0.27	121.8	71.5	
			20		10					

4A: Heifer Calf / ASA# 3876213 / DOB: 2/28/21 / Tattoo: JCAW

Adj. BW: 73# / Sired by CCR COWBOY CUT 5048Z (ASA# 2703910)

CE 12.4 | BW 1.4 | WW 83.0 | YW 120.2 | API 147.5 | TI 83.6

Solid Red. Wow! Here is a true sale feature. A young red cow coming to you in the prime of her life backed by tremendous female makers like Right On, Black Irish Kansas and Ellingson Legacy. Combining these maternal legends with the Brown Sugar cow family is a recipe for success. She sells with a black heifer calf sired by Cowboy Cut, who is no longer on the open market and only available to those fortunate enough to have some left in their tanks. Her son, Westward Ho, sells as Lot 55!



SVS BROWN SUGAR WS8A - GRANDDAM OF LOT 4

5

SVS RISE N SHINE DPFZ

PB SM

POLLED

Tattoo

DPFZ

ASA#

3125079

DOB

3/18/16

RCR AUGUSTUS R54

ASR AUGUSTUS Z2165

ASR MS JORDAN W916

PVF-BF BF26 BLACK JOKER

SVS PERFECTION PFZ2

SVS BETTINA

ESNK31

RCR NICOLE N32

HOOKS SHEAR FORCE 38K

ASR MS JORDAN T734

HARTS BLACK CASINO B408

PVF-BF MABELLE C131

CH CAUFITIME 8C

SVS DUCHESS

Adj. BW	Adj. WW	CE	BW	WW	YW	ADG	MCE	Milk	MWW	EPDs %
76	649	11.2	1.9	64.7	95.8	0.19	6.6	21.6	53.9	
								35		
Stay	Doc	CW	YG	Marb	BF	REA	Shr	API	TI	EPDs %
18.0	11.0	18.6	-0.61	-0.18	-0.126	1.03	-0.26	112.2	62.6	
			1		2			20		

5A: Heifer Calf / ASA# 3876214 / DOB: 3/5/21 / Tattoo: JDPZ

Adj. BW: 83# / Sired by CCR COWBOY CUT 5048Z (ASA# 2703910)

CE 11.3 | BW 2.7 | WW 82.4 | YW 118.8 | API 139.8 | TI 79.4

Solid Black. Rise N Shine is from the same cow family that produced our tremendously powerful SVS Rawhide BXPZ who was leased by Accelerated Genetics. This cow family is packed with rock solid performers. This heifer calf by the limited availability Cowboy Cut, will be special. What a great opportunity and blend of genetics in this pair. A son, Valley Pike, sells as Lot 51!



ASR AUGUSTUS Z2165 - SIRE OF LOT 5

SPRING COW-CALF PAIRS



CCR COWBOY CUT 5048Z - SIRE OF LOT 6A

6

SVS STAR BURST DBYC

PB SM	SVS SHENANDOAH ZWNA	ELLINGSON LEGACY M229
POLLED	SVS SNIPER BM10	SVS LADY BUG WNBA
Tattoo	SVS WHAT A DOLL MB10	PVF-BF BF26 BLACK JOKER
DBYC	SVS SHARP SHOOTER XPL7	PVF-BF BG10 DOLL BE22
ASA#	SVS REBA BYNC	SVS KEEP DREAMIN RNB1
3274976	SVS EVERGREEN YNBC	SVS PANSY PLF7
DOB		SVS SNAP SHOT UN33
10/6/16		SVS DOLLS POWER HOUSE N

Adj. BW	Adj. WW	CE	BW	WW	YW	ADG	MCE	Milk	MWW	EPDs %
79	730	10.2	2.1	69.9	104.8	0.22	7.7	26.6	61.6	
							20	25		
Stay	Doc	CW	YG	Marb	BF	REA	Shr	API	TI	
14.8	13.8	25.1	-0.47	0.06	-0.097	0.92	-0.38	118.5	71.1	
	20		30		40	40	30			

6A: Bull Calf / ASA# 3876209 / DOB: 3/5/21 / Tattoo: JDBC

Adj. BW: 85# / Sired by CCR COWBOY CUT 5048Z (ASA# 2703910)

CE 10.8 | BW 2.8 | WW 85.0 | YW 123.3 | API 143.1 | TI 83.7

Solid Black. This solid black female is doing a super job putting pounds on her Cowboy Cut son. Look at his width, depth and performance. This bull calf is backed by one of the best, no holes and proven cow families, "Doll." The Doll cow family is nationally known and a bull calf sired by Cowboy Cut is money in the bank.

7

SVS SUMMER FUN DXRD

PB SM	SVS KEEP DREAMIN RNB1	CNS DREAM ON L186
POLLED	SVS SHARP SHOOTER XPL7	SVS DOLLS JOKER NB10
Tattoo	SVS PANSY PLF7	PVF-BF BF26 BLACK JOKER
DXRD	SVS GOLD FINGER SLF2	SVS BLACK RUBY LB7B
ASA#	SVS SAPPHIRE XRLD	SS GOLDMINE L42
3274995	SVS ROXIE RLD3	SVS LUCINDA
DOB		BF K065 TALLADEGA
11/9/16		SVS LINDY

Adj. BW	Adj. WW	CE	BW	WW	YW	ADG	MCE	Milk	MWW	EPDs %
84	640	9.4	1.2	64.0	86.9	0.14	7.1	25.8	57.8	
			40				25	30		
Stay	Doc	CW	YG	Marb	BF	REA	Shr	API	TI	
16.6	13.1	16.7	-0.50	-0.12	-0.111	0.78	-0.31	109.2	63.6	
45	25		15		10					

7A: Heifer Calf / ASA# 3876208 / DOB: 4/1/21 / Tattoo: JDXX

Adj. BW: 78# / Sired by SVS EVERCLEAR FAR2 (ASA# 3546110)

CE 11.5 | BW 1.3 | WW 74.2 | YW 105.6 | API 128.2 | TI 72.9

Summer fun is a solid black, high volume super maternal female with the quality you have come to expect from SVS. The calf is sired by SVS EVERCLEAR FAR2 who is a great numbered herd sire backed by WS ALL-AROUND Z35. These two will be in your herd for years to come.

8

SVS LU LU DTP7

PB SM	SVS HUMDINGER TR21	CNS DREAM ON L186
POLLED	SVS MILESTONE ZSP7	SVS REBEKAH RM21
Tattoo	SVS SWEETIE SPL7	SRS J914 PREFERRED BEEF
DTP7	PVF-BF BF26 BLACK JOKER	SVS PANSY PLF7
ASA#	SVS TINA TP87	HARTS BLACK CASINO B408
3275130	SVS PATTY P87H	PVF-BF MABELLE C131
DOB		BLACK MICK
12/3/16		COTT RED SILK 887H

Adj. BW	Adj. WW	CE	BW	WW	YW	ADG	MCE	Milk	MWW	EPDs %
82	640	10.1	2.4	61.2	89.5	0.18	5.6	28.3	58.9	
								20		
Stay	Doc	CW	YG	Marb	BF	REA	Shr	API	TI	
18.6	7.3	23.6	-0.51	-0.21	-0.114	0.90	-0.32	107.2	59.1	
20			15		10	45				

8A: Bull Calf / ASA# 3876190 / DOB: 4/13/21 / Tattoo: JDTP

Adj. BW: 77# / Sired by SVS REVEILLE BU09 (ASA# 2947434)

CE 11.8 | BW 1.6 | WW 64.3 | YW 92.8 | API 120.8 | TI 63.8

Solid Black. Here is a solid black pair with a nice bull calf sired by SVS REVEILLE BU09 who is SRS RIGHT-ON 22R going back to SVS SANDY S019. Lu Lu is a maternal great granddaughter of our highly productive donor, Red Silk, who was in our herd for 19 years. The pedigrees of both the cow and calf have proven to work exceptionally well in this part of the country.



SVS HUMDINGER TR21 - GRANDSIRE OF LOT 8

SPRING COW-CALF PAIRS

9

SVS MOCKINGBIRD ECXB

PB SM

POLLED

Tattoo

ECXB

ASA#

3263850

DOB

2/13/17

WS BEEF KING W107
WS ALL-AROUND Z35
CDI MS HIGH ROLLER 39W
MR NLC UPGRADE U8676
SVS TWINKLE TOES CX9B
SVS LILY XS19

WS BEEF MAKER R13
WS MISS DREAMBOAT T17
HSF HIGH ROLLER 12T
CDI MS CROCKET 88T
ELLINGSON LEGACY M229
MS NLC MOJO S6119 B
SVS HUMDINGER TR21
SVS SARAH S19K

Adj. BW	Adj. WW	CE	BW	WW	YW	ADG	MCE	Milk	MWW	EPDs %
72	614	11.4	0.9	87.7	132.0	0.28	5.5	18.9	62.7	
		40	35	15	15	20			45	
Stay	Doc	CW	YG	Marb	BF	REA	Shr	API	TI	EPDs %
17.7	11.0	37.9	-0.47	0.11	-0.110	0.98	-0.35	138.2	84.1	
30		20	30		20	30	45	25	20	

9A: Bull Calf / ASA# 3876212 / DOB: 3/21/21 / Tattoo: JECB

Adj. BW: 84# / Sired by SVS BADLANDS BSNL (ASA# 2947416)

CE 9.1 | BW 1.8 | WW 77.6 | YW 115.7 | API 128.2 | TI 76.0

Solid Black. Seldom have we offered females from the Lily cow family. Here is a black pair backed up with a phenomenal granddam, SVS Lily XS19, co-owned with Sandy Acres Simmentals of Nebraska. You have a great coupon at side with this SVS Badlands BSNL heifer. Breed Mockingbird to any of today's popular baldie bulls and make your own spread baldie bull or female with the top cow families at SVS. This pair should be staying here.



SVS LILY XS19 - GRANDDAM OF LOT 9

10

SVS RED BUD ECZR

PB SM

POLLED

Tattoo

ECZR

ASA#

3263869

DOB

2/23/17

TJ SHARPER IMAGE 809U
SVS BADLANDS BSNL
SVS SUGAR-N-SPICE SNL2
WS ALL-AROUND Z35
SVS SWISS MISS CZR7
SVS GINGHAM ZRF7

DIKEMANS SURE BET
T J MISS BANDO S27
SS GOLDMINE L42
SVS NORLENE NLF2
WS BEEF KING W107
CDI MS HIGH ROLLER 39W
SVS HUMDINGER TR21
SVS RUBALINA RFB7

Adj. BW	Adj. WW	CE	BW	WW	YW	ADG	MCE	Milk	MWW	EPDs %
78	669	9.5	1.7	78.6	117.7	0.24	4.2	20.5	59.8	
				40	40					
Stay	Doc	CW	YG	Marb	BF	REA	Shr	API	TI	EPDs %
18.5	11.3	32.5	-0.33	0.09	-0.079	0.72	-0.34	130.3	76.4	
25		40						45		

10A: Heifer Calf / ASA# 3876211 / DOB: 3/21/21 / Tattoo: JECR

Adj. BW: 65# / Sired by SVS EVERCLEAR FAR2 (ASA# 3546110)

CE 13.0 | BW 0.1 | WW 77.9 | YW 115.6 | API 141.6 | TI 79.0

Solid Red with Fancy Solid Red Heifer Calf. These are outcrossed red genetics that will blend with any of the popular red Simmental bulls of today and you get two females for the price of one plus you get Red Bud in time to breed her to the bull of your choice. Good luck finding a better opportunity to add red genetics to your herd this spring!



SVS BADLANDS BSNL - SIRE OF LOT 10

11

SVS GOOD VIBRATIONS EZPG

PB SM

POLLED

Tattoo

EZPG

ASA#

3263921

DOB

3/21/17

ELLINGSON LEGACY M229
SVS SHENANDOAH ZWNA
SVS LADY BUG WNBA
KAPPES TRAILBLAZER S516
SVS MOON DANCER ZPLG
SVS PANSY PLF7

NICHOLS LEGACY G151
ELLINGSON MS PSTOCK K58
CNS DREAM ON L186
SVS DOLLS JOKER NB10
CNS DREAM ON L186
KAPPES SADIE M166
PVF-BF BF26 BLACK JOKER
SVS BLACK RUBY LB7B

Adj. BW	Adj. WW	CE	BW	WW	YW	ADG	MCE	Milk	MWW	EPDs %
81	587	10.9	1.2	62.8	95.3	0.20	7.7	19.6	50.9	
				40				20		
Stay	Doc	CW	YG	Marb	BF	REA	Shr	API	TI	EPDs %
18.3	7.7	25.7	-0.52	-0.15	-0.118	0.93	-0.34	114.4	62.5	
25			10		10	40				

11A: Bull Calf / ASA# 3876210 / DOB: 3/11/21 / Tattoo: JEZG

Adj. BW: 75# / Sired by KBHR HIGH ROAD E283 (ASA# 3312276)

CE 13.1 | BW -0.3 | WW 80.6 | YW 122.6 | API 149.0 | TI 85.2

Solid Black. Good Vibrations is backed by the Doll and Pansy cow families and is solid black. She sells with a High Road bull calf at side. High Road calves have been in high demand. A son of High Road was the feature bull selling at the Keller Broken Heart Ranch, which is quickly becoming the place to acquire the next big time purebred Simmental genetics. This calf will pay for the cow or be a future herd sire that will add value to your herd for years to come.



SVS PANSY PLF7 - SIRE OF LOT 11

SPRING COW-CALF PAIRS



SVS GINGER ZJ22 - DAM OF LOT 12

12

SVS RAINBOW RIDER EZJ2

PB SM

POLLED

Tattoo

EZJ2

ASA#

3263893

DOB

3/29/17

ELLINGSON LEGACY M229

SVS SHENANDOAH ZWNA

SVS LADY BUG WNBA

SVS KEEP DREAMIN RNB1

SVS GINGER ZJ22

SVS RED SUNSET

NICHOLS LEGACY G151

ELLINGSON MS PSTOCK K58

CNS DREAM ON L186

SVS DOLLS JOKER NB10

CNS DREAM ON L186

SVS DOLLS JOKER NB10

BOZ REDCAT D162

SVS DUCHESS

Adj. BW	Adj. WW	CE	BW	WW	YW	ADG	MCE	Milk	MWW	EPDs %
77	756	12.2	0.4	59.6	89.4	0.19	10.8	23.9	53.6	
		30	25				1	45		
Stay	Doc	CW	YG	Marb	BF	REA	Shr	API	TI	EPDs %
18.8	10.0	22.5	-0.50	-0.07	-0.114	0.84	-0.29	121.6	64.1	
20		15			10					

12A: Bull Calf / ASA# 3876194 / DOB: 4/5/21 / Tattoo: JEZJ

Adj. BW: 78# / Sired by SVS FREEDOM FOR ALL GUM1 (ASA# 3686994)

CE 11.9 | BW 1.1 | WW 69.9 | YW 105.1 | API 133.8 | TI 71.8

Solid Black, Hetero Black. Rainbow Rider is a feminine, nicely-uddered, solid black female that carries the red gene. Use her to make reds or blacks. Her dam, Ginger, is an ultra-feminine donor co-owned with Duck Creek Simmentals in North Dakota. She sells with a coupon at side by SVS FREEDOM FOR ALL GUM1, our high growth Cowboy Cut son.



CLRS AFTER SHOCK 604 A - SIRE OF LOT 13

13

SVS DANCIN' QUEEN ECZZ

PB SM

POLLED

Tattoo

ECZZ

ASA#

3427560

DOB

9/19/17

HOOK'S YELLOWSTONE 97Y

CLRS AFTER SHOCK 604 A

HOOKS SARITA 4S

SVS FULL MOON ZSJ2

SVS MELODY CZSZ

SVS DOGWOOD ZSPZ

HOOKS TAURUS 24T

HOOKS SHEYENNE 77S

HOOKS SHEAR FORCE 38K

HOOKS PEARL 22-P

SVS HUMDINGER TR21

SVS SALLY SJ22

SVS GOLD FINGER SLF2

SVS SABRINA SPKZ

Adj. BW	Adj. WW	CE	BW	WW	YW	ADG	MCE	Milk	MWW	EPDs %
73	696	11.6	1.1	81.1	116.1	0.22	5.0	24.4	65.0	
		40	40	35	45			40	35	
Stay	Doc	CW	YG	Marb	BF	REA	Shr	API	TI	EPDs %
15.1	13.0	37.7	-0.36	0.11	-0.087	0.82	-0.35	128.5	79.6	
		25	20				45		35	

13A: Heifer Calf / ASA# 3876205 / DOB: 4/1/21 / Tattoo: JECZ

Adj. BW: 77# / Sired by SVS EVERCLEAR FAR2 (ASA# 3546110)

CE 12.8 | BW 1.1 | WW 82.4 | YW 119.7 | API 138.2 | TI 80.9

Solid Black. Dancing Queen is a great spread female with loads of capacity and a super quiet disposition. She sells with a heifer calf by SVS EVERCLEAR FAR2, who is our calving-ease spread bull.



LOT 14

14

SVS LEMONADE ERF2

1/2 SM

1/2 AN

POLLED

Tattoo

ERF2

ASA#

3427487

DOB

10/15/17

O C C PAXTON 730P

COLEMAN CHARLO 0256

BOHI ABIGALE 6014

BF KO65 TALLADEGA

SVS SERENITY RF22

SVS BETTINA

O C C FOCUS 813F

O C C BLACKBIRD 736K

SITZ TRAVELER 8180

S A V ABIGALE 6062

WHF DESPERADO 212G

TJ 23H

CH CAUFITIME 8C

SVS DUCHESS

Adj. BW	Adj. WW	CE	BW	WW	YW	ADG	MCE	Milk	MWW	EPDs %
73	505	11.2	0.4	62.9	95.6	0.20	0.7	20.9	52.3	
Stay	Doc	CW	YG	Marb	BF	REA	Shr	API	TI	EPDs %
12.5	10.8	22.2	-0.16	0.17	-0.031	0.43	-0.21	110.7	65.8	

14A: Heifer Calf / ASA# 3876193 / DOB: 4/10/21 / Tattoo: JER2

Adj. BW: 77# / Sired by SVS FREEDOM FOR ALL GUM1 (ASA# 3686994)

CE 11.3 | BW 1.2 | WW 71.8 | YW 108.6 | API 121.9 | TI 70.2

Solid Black, Feminine, Half-blood. Lemonade is one of our feature Sim Angus Females. She is sired by Coleman Charlo 0256, who is vastly popular in the Angus breed for adding much needed type and kind. This female is super feminine and huge bellied. This is an exceptional heifer calf pair and is a must-see female out of our highly fertile SVS Bettina cow family.

SPRING COW-CALF PAIRS

15

SVS DIAMOND DUST EC5L

PB SM

POLLED

Tattoo

EC5L

ASA#

3427559

DOB

10/19/17

SVS SHENANDOAH ZWNA

SVS SNIPER BM10

SVS WHAT A DOLL MB10

MR NLC UPGRADE U8676

SVS MOONBEAM CSNL

SVS SUGAR-N-SPICE SNL2

ELLINGSON LEGACY M229

SVS LADY BUG WNBA

PVF-BF BF26 BLACK JOKER

PVF-BF BG10 DOLL BE22

ELLINGSON LEGACY M229

MS NLC MOJO S6119 B

SS GOLDMINE L42

SVS NORLENE NLF2

Adj. BW	Adj. WW	CE	BW	WW	YW	ADG	MCE	Milk	MWW
81	629	9.4	3.0	72.4	106.3	0.21	5.6	22.5	58.7
Stay	Doc	CW	YG	Marb	BF	REA	Shr	API	TI
15.6	11.8	26.4	-0.54	0.07	-0.113	1.01	-0.34	119.3	71.6
45	5	10	25						

15A: Heifer Calf / ASA# 3876206 / DOB: 3/20/21 / Tattoo: JECL

Adj. BW: 88# / Sired by TJ JACKPOT 525D (ASA# 3148740)

CE 9.8 | BW 3.0 | WW 72.4 | YW 111.5 | API 130.2 | TI 72.8

Solid Black. Diamond Dust is a solid black double bred Ellingson Legacy with a shot of Goldmine on the bottom side. She's from the same cow family that produced SVS Badlands BSNL, who was purchased by Accelerated Genetics and who consistently sires the right kind. You can't find better maternal pedigrees than this one. She sells with a TJ JACKPOT 525D heifer baby at side. We used him to blend the famous TJ MS 7W into our herd. You can't miss with this pair.

16

SVS MADISON EAUM

PB SM

POLLED

Tattoo

EAUM

ASA#

3427482

DOB

10/28/17

ELLINGSON LEGACY M229

SVS SHENANDOAH ZWNA

SVS LADY BUG WNBA

SRS RIGHT-ON 22R

SVS DAISY MAE AUM1

SVS IRISH CREAM UMB1

NICHOLS LEGACY G151

ELLINGSON MS PSTOCK K58

CNS DREAM ON L186

SVS DOLLS JOKER NB10

SRS J914 PREFERRED BEEF

SRS G720 GILLIAN

BLACK IRISH KANSAS

SVS WHAT A DOLL MB10

Adj. BW	Adj. WW	CE	BW	WW	YW	ADG	MCE	Milk	MWW
80	700	10.6	3.1	69.5	108.6	0.24	8.2	22.3	57.0
Stay	Doc	CW	YG	Marb	BF	REA	Shr	API	TI
19.0	11.1	25.2	-0.50	-0.03	-0.111	0.89	-0.37	122.1	67.7
20	15	10	35						

16A: Bull Calf / ASA# 3876207 / DOB: 3/22/21 / Tattoo: JEAU

Adj. BW: 85# / Sired by SVS BADLANDS BSNL (ASA# 2947416)

CE 8.9 | BW 2.8 | WW 68.1 | YW 103.4 | API 120.3 | TI 67.7

Solid Black. Madison is a solid black, moderate frame female with a super disposition. She has the Doll cow family on the top and bottom side of her pedigree. She sells with a bull calf by SVS BADLANDS BSNL, a super correct TJ SHARPER IMAGE 809U son.

17

SVS MEADOW DAISY ET35

PB SM

POLLED

Tattoo

ET35

ASA#

3427563

DOB

12/11/17

ELLINGSON LEGACY M229

SVS SHENANDOAH ZWNA

SVS LADY BUG WNBA

BF K065 TALLADEGA

SVS TIFFANY TJ35

SVS CARDINAL

NICHOLS LEGACY G151

ELLINGSON MS PSTOCK K58

CNS DREAM ON L186

SVS DOLLS JOKER NB10

WHF DESPERADO 212G

TJ 23H

LLL BLK X FILES

SVS LADY FLECK

Adj. BW	Adj. WW	CE	BW	WW	YW	ADG	MCE	Milk	MWW
83	697	10.9	1.7	61.6	90.2	0.18	8.6	22.5	53.3
Stay	Doc	CW	YG	Marb	BF	REA	Shr	API	TI
19.0	9.4	24.4	-0.51	-0.07	-0.121	0.85	-0.33	118.3	63.3
20	15	2							

17A: Bull Calf / ASA# 3876183 / DOB: 3/30/21 / Tattoo: JET5

Adj. BW: 81# / Sired by SVS EVERCLEAR FAR2 (ASA# 3546110)

CE 12.2 | BW 1.6 | WW 73.2 | YW 107.7 | API 132.6 | TI 72.7

Black Blaze. Meadow Daisy is a black blaze face cow from one of our oldest and most productive donor cow families, SVS Cardinal. She's long-sided, has a touch of frame and has her whole life ahead of her. These young Shenandoah daughters are highly productive and are hard to beat. She sells with a bull calf at side.



SVS SHENANDOAH ZWNA - SIRE OF LOT 17

18

SVS WIND A BLOWIN' FPM8

PB SM

POLLED

Tattoo

FPM8

ASA#

3546093

DOB

4/14/18

SRS RIGHT-ON 22R

SVS REVEILLE BU09

SVS SNICKERDOODLE US09

HART BACK FIRE J283

SVS PARTY TIME PMK8

SVS JOKERS DARLIN MKD8

SRS J914 PREFERRED BEEF

SRS G720 GILLIAN

SVS KEEP DREAMIN RNB1

SVS SANDY S019

HART SUBZERO G322

HART MISS KATIE CH D466

PVF-BF BF26 BLACK JOKER

SVS KAROLINE

Adj. BW	Adj. WW	CE	BW	WW	YW	ADG	MCE	Milk	MWW
80	650	8.5	3.0	68.3	98.2	0.19	10.0	20.1	54.2
Stay	Doc	CW	YG	Marb	BF	REA	Shr	API	TI
20.7	13.3	17.7	-0.44	-0.07	-0.099	0.72	-0.22	117.7	64.4
5	25	45	40						

18A: Heifer Calf / ASA# 3876186 / DOB: 4/1/21 / Tattoo: JFP8

Adj. BW: 77# / Sired by SVS EVERCLEAR FAR2 (ASA# 3546110)

CE 11.5 | BW 1.8 | WW 75.3 | YW 109.8 | API 133.5 | TI 73.4

Solid Black. Wind a Blowin is a solid black female with a beautiful head and neck, and is loaded with femininity and style. The Joker's Darlin' cow family is knee-deep in quality. This nice heifer calf at side by Everclear should definitely be a keeper too. This female should remain in your herd a very long time.



SVS REVEILLE BU09 - SIRE OF LOT 18

SPRING COW-CALF PAIRS



SVS SHENANDOAH ZWNA - SIRE OF LOT 19

19

svs MY KIND OF PRETTY FYND

PB SM

POLLED

Tattoo

FYND

ASA#

3546142

DOB

4/17/18

ELLINGSON LEGACY M229

SVS SHENANDOAH ZWNA

SVS LADY BUG WNBA

SVS GUTS & BUTT RM10

SVS HOLLY YNBD

SVS DOLL POWER NB1D

NICHOLS LEGACY G151

ELLINGSON MS PSTOCK K58

CNS DREAM ON L186

SVS DOLLS JOKER NB10

BF K065 TALLADEGA

SVS WHAT A DOLL MB10

WLE POWER STROKE

PVF-BF BG10 DOLL BE22

Adj. BW	Adj. WW	CE	BW	WW	YW	ADG	MCE	Milk	MWW	EPDs %
75	470	12.0	0.9	50.5	75.2	0.15	8.6	18.3	43.5	
		35	35				10			
Stay	Doc	CW	YG	Marb	BF	REA	Shr	API	TI	
19.0	10.6	17.2	-0.51	-0.08	-0.118	0.78	-0.37	116.3	57.0	
20			15		10		35			

19A: Bull Calf / ASA# 3876202 / DOB: 4/1/21 / Tattoo: JFYD

Adj. BW: 76# / Sired by SVS COMMON SENSE GASH (ASA# 3686935)

CE 12.9 | BW 0.1 | WW 64.8 | YW 99.6 | API 129.1 | TI 69.4

Black Blaze. My Kind of Pretty comes by her name honestly. This black blaze face female is a double bred Doll with a bull calf sired by SVS COMMON SENSE GASH, a calving ease spread son of the proven LRS ELEVATE 213B and our fancy donor, SVS Virginia Belle, who is co-owned with Sandy Acres Simmentals in Nebraska. This is a front pasture pair.



HOOK'S YELLOWSTONE 97Y - SIRE OF LOT 20A

20

svs MOON GLOW FDUJ

PB SM

POLLED

Tattoo

FDUJ

ASA#

3546075

DOB

4/22/18

SVS SHENANDOAH ZWNA

SVS SNIPER BM10

SVS WHAT A DOLL MB10

SVS SHENANDOAH ZWNA

SVS MOUNTAIN MINT DU1J

SVS IMPRESSION U12J

ELLINGSON LEGACY M229

SVS LADY BUG WNBA

PVF-BF BF26 BLACK JOKER

PVF-BF BG10 DOLL BE22

ELLINGSON LEGACY M229

SVS LADY BUG WNBA

SVS GUTS & BUTT RM10

SCC LETS TANGO 124J

Adj. BW	Adj. WW	CE	BW	WW	YW	ADG	MCE	Milk	MWW	EPDs %
82	578	9.6	2.5	63.2	94.7	0.20	7.8	20.8	52.3	
							20			
Stay	Doc	CW	YG	Marb	BF	REA	Shr	API	TI	
17.9	11.4	23.8	-0.52	-0.02	-0.110	0.94	-0.34	117.1	64.4	
30			10		20	35				

20A: Bull Calf / ASA# 3876204 / DOB: 3/12/21 / Tattoo: JFDJ

Adj. BW: 80# / Sired by HOOK'S YELLOWSTONE 97Y (ASA# 2612546)

CE 11.2 | BW 1.5 | WW 75.0 | YW 112.5 | API 133.3 | TI 76.0

Solid Black. Moon Glow is a solid black, long-sided, feminine female from our rock solid Let's Tango cow family. She sells with a bull calf by the ever-popular Hook's Yellowstone. This is a nice young pair with a fancy bull calf at side.



LOT 21

21

svs COUNT YOUR BLESSINGS FZUR

PB SM

POLLED

Tattoo

FZUR

ASA#

3546081

DOB

5/1/18

MR NLC UPGRADE U8676

SVS BELL RINGER ANL3

SVS NORRICE NLJ3

SVF STAR PLAYER T801

SVS SQUARE DANCE ZUR2

SVS FAT AND SASSY URH2

ELLINGSON LEGACY M229

MS NLC MOJO S6119 B

PVF-BF BF26 BLACK JOKER

SVS LOTTIE

GW LUCKY MAN 644N

SVF SHEZA STAR N902

SVS KEEP DREAMIN RNB1

SVS BIG TIME RH2B

Adj. BW	Adj. WW	CE	BW	WW	YW	ADG	MCE	Milk	MWW	EPDs %
77	600	10.7	1.7	77.3	115.2	0.24	7.7	20.3	58.9	
							20			
Stay	Doc	CW	YG	Marb	BF	REA	Shr	API	TI	
15.6	11.5	30.2	-0.49	-0.05	-0.105	0.97	-0.43	118.8	73.0	
			20		20	30	10			

21A: Bull Calf / ASA# 3876203 / DOB: 3/23/21 / Tattoo: JFZR

Adj. BW: 80# / Sired by SVS EVERCLEAR FAR2 (ASA# 3546110)

CE 12.2 | BW 1.5 | WW 80.7 | YW 119.6 | API 133.1 | TI 77.6

Black Blaze, Count Your Blessings is full blaze-face, beautifully constructed, ultra-feminine female. Being just a 2018 model she has her whole life ahead of her. She sells with a bull calf. This pair is the real deal. Take her home and make some more highly sought after baldies

SPRING COW-CALF PAIRS

22

SVS IVORY & LACE FDR8

PB SM

POLLED

Tattoo

FDR8

ASA#

3546077

DOB

5/7/18

SVS SHENANDOAH ZWNA

SVS SNIPER BM10

SVS WHAT A DOLL MB10

WS PRIME BEEF Z8

SVS RED VELVET DR8C

SVS BLACK BEAUTY R87C

ELLINGSON LEGACY M229

SVS LADY BUG WNBA

PVF-BF BF26 BLACK JOKER

PVF-BF BG10 DOLL BE22

WS BEEF KING W107

HSF MISS SKY 87U

PVF-BF BF26 BLACK JOKER

COTT RED SILK 887H

Adj. BW	Adj. WW	CE	BW	WW	YW	ADG	MCE	Milk	MWW	EPDs	%
80	610	10.2	1.8	70.4	104.9	0.22	6.5	22.3	57.4		
							35				
Stay	Doc	CW	YG	Marb	BF	REA	Shr	API	TI	EPDs	%
16.6	7.4	22.9	-0.52	0.08	-0.099	1.01	-0.33	124.7	72.3		
45			10		40	25					

22A: Heifer Calf / ASA# 3876187 / DOB: 3/16/21 / Tattoo: JFD8

Adj. BW: 80# / Sired by ELLINGSON DOMINATOR W905 (ASA# 2510801)

CE 12.0 | BW 1.7 | WW 74.5 | YW 110.8 | API 126.9 | TI 72.6

Solid Black, Hetero Black. Ivory and Lace is a powerfully made, deep-bodied, hetero black female. You can make red or blacks with her. Her heifer calf by Ellingson Dominator will pack on the pounds. These make a true performance pair with lots of mating flexibility, backed by the time-tested Red Silk and Doll cow family genetics.



ELLINGSON DOMINATOR W905 - SIRE OF LOT 22A

23

SVS BLUE MOON FWT7

PB SM

POLLED

Tattoo

FWT7

ASA#

3578524

DOB

9/17/18

GW-WBF SUBSTANCE 820Y

GIBBS 3009A ELEMENT

GIBBS 9128W MABELLE N341

CNS DREAM ON L186

SVS DREAM AWAY WTN7

SVS THERESA TNF7

GW PREMIUM BEEF 021TS

GW MISS MATERNAL 558P

RCR STETSON T17

BF N341 BSD MABELLE BG32

NICHOLS LEGACY G151

CNS SHEEZA DREAM K107W

KENCO/MF POWERLINE 204L

SVS NATASHIA NFW7

Adj. BW	Adj. WW	CE	BW	WW	YW	ADG	MCE	Milk	MWW	EPDs	%
79	525	9.8	2.0	79.0	118.2	0.25	6.1	20.2	59.6		
				40	40		45				
Stay	Doc	CW	YG	Marb	BF	REA	Shr	API	TI	EPDs	%
16.5	12.0	31.9	-0.48	0.18	-0.098	1.02	-0.49	131.9	79.1		
40		40	25	35	40	20		40	40		

23A: Heifer Calf / ASA# 3876189 / DOB: 3/19/21 / Tattoo: JFW7

Adj. BW: 77# / Sired by KOCH BIG TIMBER 685D (ASA# 3133113)

CE 12.5 | BW -0.6 | WW 79.0 | YW 117.5 | API 149.3 | TI 84.8

Blue Moon is a solid black female with a great feminine design. Her heifer calf by Big Timber will be even nicer. You will be able to do great things with this young fancy pair of cattle.



LOT 23

24

SVS MARY POPPINS FYSZ

PB SM

POLLED

Tattoo

FYSZ

ASA#

3578632

DOB

10/11/18

ELLINGSON LEGACY M229

SVS SHENANDOAH ZWNA

SVS LADY BUG WNBA

SVS GOLD FINGER SLF2

SVS MONARCH YSPZ

SVS SABRINA SPKZ

NICHOLS LEGACY G151

ELLINGSON MS PSTOCK K58

CNS DREAM ON L186

SVS DOLLS JOKER NB10

SS GOLDMINE L42

SVS LUCINDA

SVS JOKERS GOLD PM10

SVS PAULA PKCZ

Adj. BW	Adj. WW	CE	BW	WW	YW	ADG	MCE	Milk	MWW	EPDs	%
76	642	11.2	2.1	66.6	96.0	0.18	8.2	23.5	56.8		
		45					15				
Stay	Doc	CW	YG	Marb	BF	REA	Shr	API	TI	EPDs	%
16.4	10.3	22.2	-0.56	-0.07	-0.127	0.91	-0.33	114.8	66.1		
			3		2	45					

24A: Bull Calf / ASA# 3876197 / DOB: 4/9/21 / Tattoo: JFYZ

Adj. BW: 79# / Sired by SVS TIMBERLINE FB09 (ASA# 3578613)

CE 11.6 | BW 1.0 | WW 77.7 | YW 114.9 | API 132.6 | TI 77.2

Solid Black. Mary Poppins is a solid black, beautiful profiling, complete female with solid EPDs across the board. These Shenandoah females are super brood cows and since we lost him, very few will be offered in the future. Her bull calf by Timberline will certainly make a great addition to your herd.



LOT 24

SPRING COW-CALF PAIRS



SVS BELL RINGER ANL3 - SIRE OF LOT 25

25

SVS WANDERLUST FANB

PB SM

POLLED

Tattoo

FANB

ASA#

3578534

DOB

10/15/18

MR NLC UPGRADE U8676

SVS BELL RINGER ANL3

SVS NORRICE NLJ3

SVS STINGER XSPZ

SVS ENCHANTRESS AN9B

SVS KELBYS BLAZE N19B

ELLINGSON LEGACY M229

MS NLC MOJO S6119 B

PVF-BF BF26 BLACK JOKER

SVS LOTTIE

SRS RIGHT-ON 22R

SVS SABRINA SPKZ

HART BACK FIRE J283

COTT KELBY 019K

Adj. BW	Adj. WW	CE	BW	WW	YW	ADG	MCE	Milk	MWW	EPDs %
82	570	7.7	2.5	81.3	118.0	0.23	4.0	23.9	64.6	
				30	40			45	35	
Stay	Doc	CW	YG	Marb	BF	REA	Shr	API	TI	EPDs %
17.3	10.1	32.8	-0.50	-0.08	-0.108	1.03	-0.32	116.2	73.3	
35		35	15		20	20				

25A: Heifer Calf / ASA# 3876201 / DOB: 3/12/21 / Tattoo: JFAB

Adj. BW: 75# / Sired by MILL BAR HICKOK 7242 (ASA# 3219932)

CE 12.7 | BW 0.0 | WW 82.5 | YW 126.5 | API 135.6 | TI 81.1

Solid Black. Wanderlust is a solid black, moderate frame, sweetheart female who traces back to our Kelby cow family. Anytime you see Kelby in the pedigree, BUY HER!!! You will be happy you did. This fancy heifer calf is out of the new bull MILL BAR HICKOK 7242. We made this one to add some diversity to our customers herds.



TJ JACKPOT 525D - SIRE OF LOT 26A

26

SVS YELLOW ROSE FCSL

PB SM

HOMO

POLLED

Tattoo

FCSL

ASA#

3578618

DOB

10/17/18

HOOKS TAURUS 24T

HOOK'S YELLOWSTONE 97Y

HOOKS SHEYENNE 77S

MR NLC UPGRADE U8676

SVS MOONBEAM CSNL

SVS SUGAR-N-SPICE SNL2

HOOKS SHEAR FORCE 38K

HOOKS PEACHES 48-P

SRS J914 PREFERRED BEEF

TRIPLE C TEARS P02C

ELLINGSON LEGACY M229

MS NLC MOJO S6119 B

SS GOLDMINE L42

SVS NORLENE NLF2

Adj. BW	Adj. WW	CE	BW	WW	YW	ADG	MCE	Milk	MWW	EPDs %
92	744	8.4	4.0	94.0	137.3	0.27	3.5	25.5	72.5	
				4	10	25		35	10	
Stay	Doc	CW	YG	Marb	BF	REA	Shr	API	TI	EPDs %
15.5	11.3	41.6	-0.48	0.15	-0.110	1.05	-0.35	128.4	85.1	
		15	25	40	20	20	45		20	

26A: Heifer Calf / ASA# 3876199 / DOB: 3/20/21 / Tattoo: JFCL

Adj. BW: 81# / Sired by TJ JACKPOT 525D (ASA# 3148740)

CE 10.4 | BW 2.4 | WW 80.3 | YW 122.6 | API 136.9 | TI 79.4

Solid Black. From the cow family that produced SVS Badlands comes Yellow Rose. This solid black daughter of Yellowstone goes back to Ellingson Legacy and Goldmine on the bottom side. Her heifer calf by TJ Jackpot will have lots of maternal proven cow families behind her. This high performance pair is special.



SVS MAVERICK CXPZ - SIRE OF LOT 27

27

SVS SHENANDOAH SUNRISE FZXF

PB SM

POLLED

Tattoo

FZXF

ASA#

3578634

DOB

10/17/18

SVS BELL RINGER ANL3

SVS MAVERICK CXPZ

SVS SONG BIRD XPFZ

SVS SHARP SHOOTER XPL7

SVS MILKY WAY ZXFA

SVS MAYBELLINE XFWA

MR NLC UPGRADE U8676

SVS NORRICE NLJ3

SVS HUMDINGER TR21

SVS PERFECTION PFZ2

SVS KEEP DREAMIN RNB1

SVS PANSY PLF7

SVS GUTS & BUTT RM10

SVS RED PASSION

Adj. BW	Adj. WW	CE	BW	WW	YW	ADG	MCE	Milk	MWW	EPDs %
73	490	10.2	1.4	72.4	100.0	0.17	6.7	27.8	64.0	
			45				35	20	40	
Stay	Doc	CW	YG	Marb	BF	REA	Shr	API	TI	EPDs %
16.8	10.2	28.5	-0.50	-0.20	-0.104	0.98	-0.33	109.2	66.7	
45			15		20	30				

27A: Bull Calf / ASA# 3876196 / DOB: 3/20/21 / Tattoo: JFZF

Adj. BW: 78# / Sired by TJ PLATTE RIVER 370D (ASA# 3148171)

CE 13.4 | BW 0.5 | WW 81.0 | YW 115.1 | API 142.3 | TI 80.5

Solid Black. Shenandoah Sunrise is a solid black, high maternal female going back to our Red Passion donor. Her sire, SVS Maverick, is a maternal sib to SVS Rawhide BXPZ who was with Accelerated Genetics. She sells with a bull calf by TJ Platte River who was a high selling bull at Triangle J and is now the feature sire a Drake Simmentals in IA. These calves are great and in high demand. This bull calf will be phenomenal when he is fully developed.

SPRING COW-CALF PAIRS

28 SVS LADY OF THE VALLEY FCXD

PB SM	WS PRIME BEEF Z8	WS BEEF KING W107
POLLED	SVS SUNDANCE CWSA	HSF MISS SKY 87U
Tattoo	SVS BROWN SUGAR WS8A	GWS EBONY'S TRADEMARK 6N
FCXD	MR NLC UPGRADE U8676	SVS SEA WIND S87A
ASA#		ELLINGSON LEGACY M229
3578625	SVS TIGER LILY CX9D	MS NLC MOJO S6119 B
DOB	SVS LILY XS19	SVS HUMDINGER TR21
10/21/18		SVS SARAH S19K



LOT 28

Adj. BW	Adj. WW	CE	BW	WW	YW	ADG	MCE	Milk	MWW	EPDs
83	697	8.5	3.0	89.1	130.5	0.26	3.1	22.3	66.8	%
				10	20	35			25	%
Stay	Doc	CW	YG	Marb	BF	REA	Shr	API	TI	EPDs
14.2	7.0	36.4	-0.49	0.04	-0.104	1.07	-0.27	119.6	80.3	%
		25	20		20	15			35	%

28A: Heifer Calf / ASA# 3876198 / DOB: 4/13/21 / Tattoo: JFCD

Adj. BW: 79# / Sired by SVS COMMON SENSE GASH (ASA# 3686935)

CE 10.7 | BW 1.5 | WW 85.0 | YW 128.7 | API 130.1 | TI 81.2

Solid Black, Hetero Black. Future Donor Alert!!! Lady of the Valley is an amazing female with tremendous depth, width, power and growth generated by combining SVS Sundance with the Lily cow family. She's hetero black and would be perfect to make out-cross red genetics. As a bonus she has a heifer calf at side. These two have the quality you have come to expect from SVS.

29 SVS POCKET'S FULL O POSIES FAUJ

PB SM	ELLINGSON LEGACY M229	NICHOLS LEGACY G151
POLLED	SVS SHENANDOAH ZWNA	ELLINGSON MS PSTOCK K58
Tattoo	SVS LADY BUG WNBA	CNS DREAM ON L186
FAUJ	SVS RAM ROD UPF7	SVS DOLLS JOKER NB10
ASA#		SAND RANCH HAND
3578592	SVS SNOW PEA AU1J	SVS RUBY BLACK PF7A
DOB	SVS IMPRESSION U12J	SVS GUTS & BUTT RM10
10/28/18		SCC LETS TANGO 124J



SVS SHENANDOAH ZWNA - SIRE OF LOT 29

Adj. BW	Adj. WW	CE	BW	WW	YW	ADG	MCE	Milk	MWW	EPDs
76	701	11.5	1.4	63.8	96.6	0.20	8.7	25.0	56.9	%
		40	45				10	35		%
Stay	Doc	CW	YG	Marb	BF	REA	Shr	API	TI	EPDs
17.8	9.6	25.3	-0.55	-0.04	-0.124	0.95	-0.30	120.3	66.4	%
		30	4		2	35				%

29A: Bull Calf / ASA# 3876200 / DOB: 3/8/21 / Tattoo: JFAJ

Adj. BW: 80# / Sired by MILL BAR HICKOK 7242 (ASA# 3219932)

CE 14.0 | BW 0.1 | WW 75.3 | YW 118.1 | API 136.6 | TI 77.7

Solid Black. Pocket Full O Posies is a solid black, feminine, long-sided female from the Let's Tango cow family. With balanced EPDs, this pair represents the best of Simmental and Angus genetics in a functional package.

30 SVS MISTY RAIN FBM8

PB SM	MR NLC UPGRADE U8676	ELLINGSON LEGACY M229
POLLED	SVS PATRIOT CXT7	MS NLC MOJO S6119 B
Tattoo	SVS MOLASSES XTP7	SVS HUMDINGER TR21
FBM8	W/C WIDE TRACK 694Y	SVS TINA TP87
ASA#		3C W/C RIGHT TRACK W9462
3578604	SVS BARE FOOTIN` BMK8	MISS WERNING 694S
DOB	SVS JOKERS DARLIN MKD8	PVF-BF BF26 BLACK JOKER
11/12/18		SVS KAROLINE



MILL BAR HICKOK 7242 - SIRE OF LOT 30A

Adj. BW	Adj. WW	CE	BW	WW	YW	ADG	MCE	Milk	MWW	EPDs
83	550	8.3	4.3	77.3	116.4	0.24	3.0	27.0	65.6	%
					45			25	30	%
Stay	Doc	CW	YG	Marb	BF	REA	Shr	API	TI	EPDs
15.7	11.9	30.8	-0.55	-0.01	-0.116	1.09	-0.27	113.6	71.4	%
		40	45	4		10	15			%

30A: Bull Calf / ASA# 3876184 / DOB: 3/7/21 / Tattoo: JFB8

Adj. BW: 79# / Sired by MILL BAR HICKOK 7242 (ASA# 3219932)

CE 12.9 | BW 1.0 | WW 80.6 | YW 125.9 | API 134.4 | TI 80.2

Solid Black. Misty Rain is a solid black Patriot daughter who displays his volume and correctness in a very pretty package, along with Wide Track and Joker who make big powerful females that last for years. Her SimAngus bull calf will put it all together to command top dollar.

SPRING COW-CALF PAIRS



SVS SUNDANCE CWSA - SIRE OF LOT 31

31

svs SUNSHINE SUSIE FCN8

PB SM

WS PRIME BEEF Z8

WS BEEF KING W107

POLLED

SVS SUNDANCE CWSA

HSF MISS SKY 87U

Tattoo

SVS BROWN SUGAR WS8A

GWS EBONYS TRADEMARK 6N

FCN8

SVS SHENANDOAH ZWNA

SVS SEA WIND S87A

ASA#

SVS CHOCOLATE CHIP CN8H

ELLINGSON LEGACY M229

3578576

SVS NINA N87H

SVS LADY BUG WNBA

DOB

12/3/18

BF K065 TALLADEGA

COTT RED SILK 887H

Adj. BW	Adj. WW	CE	BW	WW	YW	ADG	MCE	Milk	MWW	EPDs %
87	638	7.9	4.4	82.6	118.4	0.22	3.2	21.0	62.2	
				30	40				45	
Stay	Doc	CW	YG	Marb	BF	REA	Shr	API	TI	EPDs %
15.8	7.5	31.0	-0.45	0.02	-0.099	0.91	-0.26	115.2	73.7	
		45	40		40	45				

31A: Bull Calf / ASA# 3876185 / DOB: 4/11/21 / Tattoo: JFC8

Adj. BW: 80# / Sired by SVS TIMBERLINE FB09 (ASA# 3578613)

CE 10.2 | BW 1.9 | WW 85.2 | YW 125.4 | API 133.4 | TI 81.0

Solid Black, Hetero Black. Sunshine Susie, a SVS Sundance daughter, is super feminine, super flashy and super good! These proven genetics from SVS Brown Sugar and Red Silk never fail. She puts tons of power in a very attractive package. She sells with a fancy bull calf at side.



SVS TIMBERLINE FB09 - SIRE OF LOT 32A

32

svs GINGHAM N DENIM GAXF

PB SM

LRS ELEVATE 213B

HOOK'S YELLOWSTONE 97Y

POLLED

SVS CLEAR WATER DBZ9

LRS MS DUAL FOCUS 213Z

Tattoo

SVS BLACK GYPSY BZ09

DIKEMANS SURE BET

GAXF

SVS KEEP DREAMIN RNB1

SVS COW BELLE ZS09

ASA#

SVS MISS KITTY AXF7

CNS DREAM ON L186

3686999

SVS GREY MIST XFW7

SVS DOLLS JOKER NB10

DOB

3/20/19

SVS GUTS & BUTT RM10

SVS RED PASSION

Adj. BW	Adj. WW	CE	BW	WW	YW	ADG	MCE	Milk	MWW	EPDs %
80	638	9.0	2.0	76.2	110.9	0.22	6.1	25.5	63.6	
							45	35	40	
Stay	Doc	CW	YG	Marb	BF	REA	Shr	API	TI	EPDs %
16.9	9.2	24.5	-0.47	0.03	-0.100	0.89	-0.38	121.7	73.8	
40			30		40		30			

32A: Heifer Calf / ASA# 3876195 / DOB: 4/7/21 / Tattoo: JGAF

Adj. BW: 76# / Sired by SVS TIMBERLINE FB09 (ASA# 3578613)

CE 10.7 | BW 0.8 | WW 82.1 | YW 121.8 | API 136.6 | TI 81.1

Solid Black. Gingham N Denim is a solid black first calf heifer and she's doing a great job with her heifer calf by Timberline. She combines the maternal power of three of our mainstay cow families, Doll, Red Passion and Sandy. This is a super solid pair of females with their whole lives ahead of them!

33

svs FRESH MOUNTAIN AIR GCZ7

PB SM

LRS ELEVATE 213B

HOOK'S YELLOWSTONE 97Y

POLLED

SVS CLEAR WATER DBZ9

LRS MS DUAL FOCUS 213Z

Tattoo

SVS BLACK GYPSY BZ09

DIKEMANS SURE BET

GCZ7

WS ALL-AROUND Z35

SVS COW BELLE ZS09

ASA#

SVS SWISS MISS CZR7

WS BEEF KING W107

3686947

SVS GINGHAM ZRF7

CDI MS HIGH ROLLER 39W

DOB

3/26/19

SVS HUMDINGER TR21

SVS RUBALINA RFB7

Adj. BW	Adj. WW	CE	BW	WW	YW	ADG	MCE	Milk	MWW	EPDs %
85	700	10.2	1.0	87.2	131.9	0.28	5.4	24.7	68.2	
			35	15	15	20		40	20	
Stay	Doc	CW	YG	Marb	BF	REA	Shr	API	TI	EPDs %
17.8	9.3	34.4	-0.45	0.10	-0.099	0.96	-0.38	136.0	83.8	
30		30	40		40	30	30	30	20	

33A: Heifer Calf / ASA# 3876188 / DOB: 3/19/21 / Tattoo: JGC7

Adj. BW: 84# / Sired by WLE LAST CALL Y716 (ASA# 2594235)

CE 10.8 | BW 2.1 | WW 77.6 | YW 116.2 | API 130.4 | TI 75.8

Solid Black. At SVS, we love history, and Fresh Mountain Air is a part of the history of our herd. Her maternal great granddam, SVS Rubalina, was our very first donor. And this first calf heifer offers a fresh pedigree with a big spread and yet goes back to the origin of this herd. She's also a maternal sib to Lot 57, SVS Bad to the Bone HCZ7, our feature Proclamation son in this offering. Not only is this female doing a great job, but her genetic roots run as deep as they come and are still relevant today. This heifer calf by Last Call will be super fancy and is great numbered to boot.

Our farm is fortunate to own cattle purchased from Shenandoah Valley Simmentals, Home of the Keepin' Kind. Thank you, Lisa, for researching the breed's genetics and selecting for strong maternal traits, quiet disposition, and correct feet and legs. Lisa sells the best so your herd can be the best.

- Tom Burgess, D.V.M. and Gloria Burgess
Colonial Fields Farm, Bridgewater, VA

SPRING CALVING FEMALES



Macqueen

LOT 34

34

SVS RISING SUN CA9B

PB SM

WS BEEF KING W107

WS BEEF MAKER R13

POLLED

WS ALL-AROUND Z35

WS MISS DREAMBOAT T17

Tattoo

CDI MS HIGH ROLLER 39W

HSF HIGH ROLLER 12T

CA9B

SVS KEEP DREAMIN RNB1

CDI MS CROCKET 88T

ASA#

SVS PATIENCE A9BB

CNS DREAM ON L186

3136949

SVS KELBYS BLAZE N19B

SVS DOLLS JOKER NB10

DOB

10/6/15

HART BACK FIRE J283

COTT KELBY 019K

Adj. BW	Adj. WW	CE	BW	WW	YW	ADG	MCE	Milk	MWW	EPDs %
85	703	9.3	2.2	90.3	131.9	0.26	6.6	24.5	69.6	
				10	15		35	40	15	
Stay	Doc	CW	YG	Marb	BF	REA	Shr	API	TI	EPDs %
21.0	11.7	33.2	-0.41	0.07	-0.096	0.86	-0.34	137.3	82.8	
4	45	35			40			30	25	

PE 6/18/20 to 8/28/20 to SVS BUSTIN' LOOSE EYR7 (ASA# 3427571)

Solid Red. SVS Rising Sun is a solid red, broody, powerfully-constructed female who is co-owned with Duck Creek Simmentals in ND. She's backed by the Kelby and Doll cow families...time-tested, predictable and profitable genetics. A female like this can put you on the map. With the demand for red and red baldies growing around the country please do yourself a favor and buy this cow. She will be an ATM.

35

SVS RAINBOW DANCER CNL2

PB SM

SVS KEEP DREAMIN RNB1

CNS DREAM ON L186

POLLED

SVS SHARP SHOOTER XPL7

SVS DOLLS JOKER NB10

Tattoo

SVS PANSY PLF7

PVF-BF BF26 BLACK JOKER

CNL2

PVF-BF BF26 BLACK JOKER

SVS BLACK RUBY LB7B

ASA#

SVS NORLENE NLF2

HARTS BLACK CASINO B408

3137005

SVS LUCINDA

PVF-BF MABELLE C131

DOB

11/15/15

RAINSBLACK BOLDSTOCK142F

SVS BETTINA

Adj. BW	Adj. WW	CE	BW	WW	YW	ADG	MCE	Milk	MWW	EPDs %
80	609	6.2	3.9	71.0	101.0	0.19	4.8	29.3	64.7	
								15	35	
Stay	Doc	CW	YG	Marb	BF	REA	Shr	API	TI	EPDs %
19.3	9.0	24.2	-0.48	-0.13	-0.105	0.88	-0.31	108.6	64.3	
15		25		20						

35A: Bull Calf / ASA# Pending / DOB: 4/16/21 / Tattoo: JCN2

Adj. BW: 76# / Sired by SVS BUSTIN' LOOSE EYR7 (ASA# 3427571)

Projected EPDs CE 9.2 | BW 3.1 | WW 77.7 | YW 112.9 | API 124.8 | TI 73.0

Solid Black. Rainbow Dancer is a solid black, high volume female with loads of maternal ability stemming from our Bettina donor cow family. She features sires in her pedigree that have been the foundation we have built cow families on. This cow has real world performance built into her.



SVS KEEP DREAMIN RNB1 - GRANDSIRE OF LOT 35

SPRING CALVING FEMALES



SVS RELOAD WPF7 - SIRE OF LOT 36

36

SVS MAY APPLE CXS7

PB SM	SRS RIGHT-ON 22R	SRS J914 PREFERRED BEEF
POLLED	SVS RELOAD WPF7	SRS G720 GILLIAN
Tattoo	SVS RUBY BLACK PF7A	BLACK IRISH KANSAS
CXS7	CNS DREAM ON L186	SVS RUBY RED
ASA#	SVS SILK N SATIN XSP7	NICHOLS LEGACY G151
3136973	SVS SWEETIE SPL7	CNS SHEEZA DREAM K107W
DOB		SRS J914 PREFERRED BEEF
11/20/15		SVS PANSY PLF7

Adj. BW	Adj. WW	CE	BW	WW	YW	ADG	MCE	Milk	MWW	EPDs %
78	655	9.6	3.6	83.2	124.8	0.26	6.4	32.6	74.1	
				25	25	35	40	4	10	
Stay	Doc	CW	YG	Marb	BF	REA	Shr	API	TI	EPDs %
17.4	12.9	30.6	-0.46	0.03	-0.105	0.88	-0.37	124.1	77.2	
35	30	45	35		20		35			

PE 6/18/20 to 8/18/20 to SVS HIGH FLYER FASB (ASA# 3578599)

Solid Black. May Apple is a solid black, powerful female who is a double bred Preferred Beef daughter out of our proven SVS Pansy donor cow family. She's as quiet as a kitten and should calve by sale date to SVS High Flyer, a fancy Cowboy Cut son.

37

SVS PRETTY AS A PIC EA10

PB SM	SVS SHENANDOAH ZWNA	ELLINGSON LEGACY M229
POLLED	SVS SNIPER BM10	SVS LADY BUG WNBA
Tattoo	SVS WHAT A DOLL MB10	PVF-BF BF26 BLACK JOKER
EA10		PVF-BF BG10 DOLL BE22
ASA#	SRS RIGHT-ON 22R	SRS J914 PREFERRED BEEF
3263848	SVS WHISPERIN' HOPE AX10	SRS G720 GILLIAN
DOB	SVS SNICKERS XN10	SVS GOLD FINGER SLF2
5/13/17		SVS DOLLS JOKER NB10

Adj. BW	Adj. WW	CE	BW	WW	YW	ADG	MCE	Milk	MWW	EPDs %
80	762	9.4	3.0	72.9	109.9	0.23	6.4	27.2	63.6	
							40	25	40	
Stay	Doc	CW	YG	Marb	BF	REA	Shr	API	TI	EPDs %
17.8	12.9	25.2	-0.47	0.02	-0.102	0.88	-0.39	121.4	70.9	
30	30		30		20		25			

PE 6/18/20 to 8/27/20 to SVS FREEDOM FOR ALL GUM1 (ASA# 3686994)

Solid Black. Pretty As A Pic is a long-sided, deep-bodied, free-moving, solid black female. This high performance, high maternal female from the Doll cow family has many, many years of production ahead of her.

38

SVS DIXIE'S DAME EYRG

PB SM	ELLINGSON LEGACY M229	NICHOLS LEGACY G151
POLLED	SVS SHENANDOAH ZWNA	ELLINGSON MS PSTOCK K58
Tattoo	SVS LADY BUG WNBA	CNS DREAM ON L186
EYRG		SVS DOLLS JOKER NB10
ASA#	SVS HUMDINGER TR21	CNS DREAM ON L186
3427569	SVS CANDLE LIGHT YRLG	SVS REBEKAH RM21
DOB	SVS ROXANNE RLG2	BF K065 TALLADEGA
10/28/17		SVS CATS MEOW LGC2

Adj. BW	Adj. WW	CE	BW	WW	YW	ADG	MCE	Milk	MWW	EPDs %
81	720	10.1	2.9	72.8	105.4	0.20	6.4	26.7	63.1	
							40	25	45	
Stay	Doc	CW	YG	Marb	BF	REA	Shr	API	TI	EPDs %
16.1	10.6	29.9	-0.53	-0.12	-0.121	0.98	-0.34	111.0	67.7	
			10		2	30				

38A: Bull Calf / ASA# Pending / DOB: 4/16/21 / Tattoo: JEY

Adj. BW: 82# / Sired by SVS EVERCLEAR FAR2 (ASA# 3546110)

Projected EPDs CE 11.9 | BW 2.1 | WW 78.6 | YW 114.9 | API 129.1 | TI 74.9

Baldy. Dixie's Dame is a long-sided baldie second calf heifer with loads of capacity, length and a touch of frame. She's a milking machine packed with Humdinger genetics. She's super stout and super good!

39

SVS HONEY SWEET EZUP

PB SM	ELLINGSON LEGACY M229	NICHOLS LEGACY G151
POLLED	SVS SHENANDOAH ZWNA	ELLINGSON MS PSTOCK K58
Tattoo	SVS LADY BUG WNBA	CNS DREAM ON L186
EZUP		SVS DOLLS JOKER NB10
ASA#	SVS RELOAD WPF7	SRS RIGHT-ON 22R
3427444	SVS DOE EYES ZUP7	SVS RUBY BLACK PF7A
DOB	SVS HONEY BEE UPL7	DS BLACK ZINGER 141B
11/14/17		SVS PANSY PLF7

Adj. BW	Adj. WW	CE	BW	WW	YW	ADG	MCE	Milk	MWW	EPDs %
82	793	10.2	3.1	76.2	116.7	0.25	7.3	25.1	63.2	
					45	40	25	35	40	
Stay	Doc	CW	YG	Marb	BF	REA	Shr	API	TI	EPDs %
17.3	12.0	30.6	-0.51	-0.05	-0.110	1.00	-0.27	119.2	71.4	
35	40	45	15		20	25				

PE 6/18/20 to 8/27/20 to SVS FREEDOM FOR ALL GUM1 (ASA# 3686994)

Solid Black. Honey Sweet is a solid black female out of our Shenandoah bull and Pansy on the bottom side. She's deep, pretty and is a rock-solid female.

40

SVS SHE'S A KEEPER FUM1

PB SM	HOOK'S YELLOWSTONE 97Y	HOOKS TAURUS 24T
POLLED	CLRS AFTER SHOCK 604 A	HOOKS SHEYENNE 77S
Tattoo	HOOKS SARITA 4S	HOOKS SHEAR FORCE 38K
FUM1		HOOKS PEARL 22-P
ASA#	BLACK IRISH KANSAS	IRISH BLACK KNIGHT
3546131	SVS IRISH CREAM UMB1	KANSAS BLACK LASS 215X
DOB	SVS WHAT A DOLL MB10	PVF-BF BF26 BLACK JOKER
3/7/18		PVF-BF BG10 DOLL BE22

Adj. BW	Adj. WW	CE	BW	WW	YW	ADG	MCE	Milk	MWW	EPDs %
77	589	11.1	1.5	72.3	112.0	0.25	7.2	16.6	52.7	
			45	45		40	25			
Stay	Doc	CW	YG	Marb	BF	REA	Shr	API	TI	EPDs %
17.0	11.5	33.6	-0.38	0.00	-0.094	0.75	-0.35	123.4	70.9	
40		35			40		45			

PE 6/10/20 to 8/27/20 to SVS EVERCLEAR FAR2 (ASA# 3546110)

Solid Black. She's A Keeper is solid black and traces back to one of the best cows in the history of our program, What A Doll. She's smooth, clean-fronted and high capacity. You will really like this female.

SPRING CALVING FEMALES

41

SVS STAR SHINE FCZ7

PB SM

HOOK'S YELLOWSTONE 97Y

HOOKS TAURUS 24T

POLLED

CLRS AFTER SHOCK 604 A

HOOKS SHEYENNE 77S

Tattoo

HOOKS SARITA 4S

HOOKS SHEAR FORCE 38K

FCZ7

DIKEMANS SURE BET

TJ 57J THE GAMBLER

ASA#

SVS SPARKLES CZL7

MEGAN 9M

3546123

SVS DIXIE DELITE ZLB7

SVS HUMDINGER TR21

DOB

3/11/18

SVS BLACK RUBY LB7B

Adj. BW	Adj. WW	CE	BW	WW	YW	ADG	MCE	Milk	MWW	EPDs %
78	627	12.3	0.4	77.8	113.5	0.22	4.9	20.9	59.8	
		30	25	45						
Stay	Doc	CW	YG	Marb	BF	REA	Shr	API	TI	EPDs %
17.2	15.3	32.9	-0.39	0.14	-0.093	0.78	-0.43	135.8	79.2	
40	10	35		45	40		10	30	40	

PE 6/10/20 to 8/27/20 to SVS EVERCLEAR FAR2 (ASA# 3546110)

Solid Black. SVS Star Shine is a solid black female with balanced EPDs and high indexes. With Humdinger and Black Ruby genetics behind her, she's going to be a keeper!

42

SVS CLARA FXP8

PB SM

SRS RIGHT-ON 22R

SRS J914 PREFERRED BEEF

POLLED

SVS REVEILLE BU09

SRS G720 GILLIAN

Tattoo

SVS SNICKERDOODLE US09

SVS KEEP DREAMIN RNB1

FXP8

ANKONIAN RED CAESAR

BOZ REDCOAT

ASA#

SVS RIBBONS N BOWS XPM8

GFI CANDACE G51

3546080

SVS PARTY TIME PMK8

HART BACK FIRE J283

DOB

3/25/18

SVS JOKERS DARLIN MKD8

Adj. BW	Adj. WW	CE	BW	WW	YW	ADG	MCE	Milk	MWW	EPDs %
76	627	8.4	3.3	72.5	105.5	0.21	9.8	26.3	62.5	
							3	30	45	
Stay	Doc	CW	YG	Marb	BF	REA	Shr	API	TI	EPDs %
20.3	9.9	21.5	-0.45	-0.09	-0.102	0.76	-0.24	117.4	67.0	
10			40		20					

PE 6/10/20 to 8/27/20 to SVS EVERCLEAR FAR2 (ASA# 3546110)

Solid Black. Clara is a solid black, long-sided female with a touch of frame. She combines Sandy, Red Caesar and Joker bloodlines in a unique package. This Joker's Darlin' cow family just keeps producing the right kind.

43

SVS INGRID FYU7

PB SM

MR NLC UPGRADE U8676

ELLINGSON LEGACY M229

POLLED

SVS PATRIOT CXT7

MS NLC MOJO S6119 B

Tattoo

SVS MOLASSES XTP7

SVS HUMDINGER TR21

FYU7

SRS RIGHT-ON 22R

SRS J914 PREFERRED BEEF

ASA#

SVS MOUNTAIN MUSIC YUS7

SRS G720 GILLIAN

3546106

SVS LULLABY USP7

SVS KEEP DREAMIN RNB1

DOB

3/26/18

SVS SWEETIE SPL7

Adj. BW	Adj. WW	CE	BW	WW	YW	ADG	MCE	Milk	MWW	EPDs %
77	635	8.6	3.1	74.1	110.5	0.23	-1.4	29.7	66.7	
								10	25	
Stay	Doc	CW	YG	Marb	BF	REA	Shr	API	TI	EPDs %
18.1	12.5	27.3	-0.52	0.03	-0.113	0.97	-0.36	121.7	72.1	
30	35		10		10	30	40			

PE 6/10/20 to 9/18/20 to SVS EVERCLEAR FAR2 (ASA# 3546110)

Solid Black. Ingrid is a deep-middled, solid black Patriot daughter with plenty of growth and milk in her EPDs. This pretty-made female has years of production ahead of her.



SVS PATRIOT CXT7 - SIRE OF LOT 43

44

SVS WOODLAND PRINCESS FU1J

PB SM

ELLINGSON LEGACY M229

NICHOLS LEGACY G151

POLLED

SVS SHENANDOAH ZWNA

ELLINGSON MS PSTOCK K58

Tattoo

SVS LADY BUG WNBA

CNS DREAM ON L186

FU1J

SVS GUTS & BUTT RM10

SVS DOLLS JOKER NB10

ASA#

SVS IMPRESSION U12J

BF K065 TALLADEGA

3546088

SCC LETS TANGO 124J

SVS WHAT A DOLL MB10

DOB

6/20/18

HOOKS ANCHOR 67D

SCC TANGO 203G

Adj. BW	Adj. WW	CE	BW	WW	YW	ADG	MCE	Milk	MWW	EPDs %
77	612	10.4	2.3	62.0	90.5	0.18	8.3	21.2	52.1	
							15			
Stay	Doc	CW	YG	Marb	BF	REA	Shr	API	TI	EPDs %
18.3	9.9	24.4	-0.54	-0.08	-0.122	0.92	-0.28	114.6	62.3	
25			5		2	40				

PE 6/25/20 to 8/26/20 to SVS COMMON SENSE GASH (ASA# 3686935)

Solid Black. This female, Woodland Princess, is hard to part with. This solid black heifer from the Let's Tango cow family is deep, long and powerful. She combines the Doll cow family with the Hooks program, and is bound to be a brood cow extraordinaire.



SVS SHENANDOAH ZWNA - SIRE OF LOT 44

OPEN HEIFERS



SVS WHAT A DOLL MB10 - GRANDDAM OF LOT 45



LOT 46

47

SVS WATER LILY HCXA

PB SM

HOOK'S BEACON 56B

HOOKS SHEAR FORCE 38K

POLLED

KBHR HIGH ROAD E283

HOOKS ZAFIRAH 41Z

Tattoo

WS MISS SUGAR C4

CLRS GRADE-A 875 A

HCXA

SAS DEEP ROCK 12U

JF GENERAL 516R

ASA#

SVS FASCINATION CX9A

SAS 787M

3793782

SVS LILY XS19

SVS HUMDINGER TR21

DOB

3/13/20

SVS SARAH S19K

Adj. BW	Adj. WW	CE	BW	WW	YW	ADG	MCE	Milk	MWW	EPDs %
74	618	11.7	0.5	82.4	120.6	0.24	7.6	25.6	66.7	
		40	25	30	35		20	35	25	
Stay	Doc	CW	YG	Marb	BF	REA	Shr	API	TI	EPDs %
18.9	11.6	32.9	-0.47	0.32	-0.083	1.14	-0.33	150.6	87.2	
20	45	35	30	15		10		10	15	

Water Lily is out of High Road who has soared in popularity as the best proven Beacon son in the country. This female is bred to make cattle for the most discerning breeders.



KBHR HIGH ROAD E283 - SIRE OF LOT 49

45

SVS RUNNIN' FREE HUMD

PB SM

WS ALL-AROUND Z35

WS BEEF KING W107

POLLED

SVS ROCKY TOP CX9C

CDI MS HIGH ROLLER 39W

Tattoo

SVS LILY XS19

SVS HUMDINGER TR21

HUMD

BLACK IRISH KANSAS

IRISH BLACK KNIGHT

ASA#

SVS HONEY COMB UMBD

KANSAS BLACK LASS 215X

3793722

SVS WHAT A DOLL MB10

PVF-BF BF26 BLACK JOKER

DOB

3/10/20

PVF-BF BG10 DOLL BE22

Adj. BW	Adj. WW	CE	BW	WW	YW	ADG	MCE	Milk	MWW	EPDs %
73	722	10.5	0.8	79.8	122.1	0.26	8.8	24.1	64.0	
			30	40	30		35	10	45	
Stay	Doc	CW	YG	Marb	BF	REA	Shr	API	TI	EPDs %
19.1	10.8	38.6	-0.49	-0.14	-0.116	0.99	-0.35	123.6	73.8	
15		20	20		10	25	45			

Solid Black. Here is a solid black What A Doll granddaughter and the only SVS Rocky Top daughter in this offering. Here's a no miss cow.

46

SVS IMAGINATION HCN2

PB SM

CCR COWBOY CUT 5048Z

TRIPLE C SINGLETARY S3H

POLLED

TJ HIGH PLAINS 986E

CCR MS 4045 TIME 7322T

Tattoo

TJ MS 38W

DIKEMANS SURE BET

HCN2

SVS SHARP SHOOTER XPL7

SVS KEEP DREAMIN RNB1

ASA#

SVS RAINBOW DANCER CNL2

SVS PANSY PLF7

3793734

SVS NORLENE NLF2

PVF-BF BF26 BLACK JOKER

DOB

3/10/20

SVS LUCINDA

Adj. BW	Adj. WW	CE	BW	WW	YW	ADG	MCE	Milk	MWW	EPDs %
78	640	10.3	2.0	79.3	115.3	0.22	5.9	32.4	72.1	
				40	45			4	10	
Stay	Doc	CW	YG	Marb	BF	REA	Shr	API	TI	EPDs %
19.0	9.4	33.3	-0.37	0.11	-0.080	0.85	-0.39	132.6	78.1	
20		35					25	40	45	

Solid Black. Imagination is a picture-perfect daughter of TJ High Plains with staples like Keep Dreamin' and Joker in her pedigree. Past customers know she is a lock to be a big-time producer, just look at her dam, Lot 35, who also sells!

48

SVS WINTERBERRY HY09

PB SM

BH TRACKER 998J

LRS PREFERRED STOCK 370C

POLLED

THSF FREEDOM 300N

699F

Tattoo

SAFN MISS ZING 02H

SAC JET TOP 2D

HY09

SVS GOLD FINGER SLF2

SAC MISS ZING 88E

ASA#

SVS LEATHER N LACE YS09

SS GOLDMINE L42

3793785

SVS SANDY S019

SVS LUCINDA

DOB

3/15/20

BLACK IRISH KANSAS

Adj. BW	Adj. WW	CE	BW	WW	YW	ADG	MCE	Milk	MWW	EPDs %
80	636	7.5	2.0	78.0	116.7	0.24	7.1	21.9	60.8	
				45	45			25		
Stay	Doc	CW	YG	Marb	BF	REA	Shr	API	TI	EPDs %
20.5	12.0	31.6	-0.52	-0.12	-0.123	0.93	-0.41	120.4	71.0	
10	40	40	10		2	40	15			

Solid Red. Attention, Red Alert!!! Winterberry is a solid red female out of the super female maker Freedom and by the Sandy cow family who cannot be beat. She is in the top 10% on stay. She has all the makings to be a great red herd starter for you!

49

SVS EARLY MORNIN' RAIN HXM1

PB SM

HOOK'S BEACON 56B

HOOKS SHEAR FORCE 38K

POLLED

KBHR HIGH ROAD E283

HOOKS ZAFIRAH 41Z

Tattoo

WS MISS SUGAR C4

CLRS GRADE-A 875 A

HXM1

SVS HUMDINGER TR21

WS ANISE A71

ASA#

SVS COVER GIRL XM10

CNS DREAM ON L186

3793789

SVS WHAT A DOLL MB10

SVS REBEKAH RM21

DOB

3/20/20

PVF-BF BF26 BLACK JOKER

Adj. BW	Adj. WW	CE	BW	WW	YW	ADG	MCE	Milk	MWW	EPDs %
72	597	12.9	0.0	79.3	119.5	0.25	8.7	29.3	68.9	
		25	20	40	40		40	10	15	
Stay	Doc	CW	YG	Marb	BF	REA	Shr	API	TI	EPDs %
17.2	12.5	37.1	-0.47	0.18	-0.081	1.19	-0.39	141.2	83.1	
40	35	25	30	35		5	25	25	25	

Early Mornin Rain is a solid black High Road daughter out of a daughter of one of our feature donors What A Doll. We should not be selling her! This one has all the bells and whistles and has a great cow family behind her.

AGE ADVANTAGE BULLS



LOT 50

50

svs STOCKADE DZS9

PB SM

POLLED

Tattoo

DZS9

ASA#

3275097

DOB

10/18/16

ELLINGSON LEGACY M229

ELLINGSON DOMINATOR W905

ELLINGSON HUMMER T713

KAPPES TRAILBLAZER S516

SVS COW BELLE ZS09

SVS SANDY S019

NICHOLS LEGACY G151

ELLINGSON MS PSTOCK K58

HC HUMMER 12M

ELLINGSON MS 600U J941

CNS DREAM ON L186

KAPPES SADIE M166

BLACK IRISH KANSAS

COTT KELBY 019K

Adj. BW	Adj. WW	Adj. YW	CE	BW	WW	YW	ADG	MCE	Milk	MWW	EPDs % EPDs %
76	731	1138	6.2	2.8	86.4	129.5	0.27	3.6	18.4	61.6	
					15	20	25				
Stay	Doc	CW	YG	Marb	BF	REA	Shr	API	TI		
17.0	-1.3	31.3	-0.46	-0.17	-0.113	0.84	-0.30	111.0	73.2		
40		45	35		10						

51

svs VALLEY PIKE GDPZ

PB SM

POLLED

Tattoo

GDPZ

ASA#

3686962

DOB

3/7/19

TRIPLE C SINGLETARY S3H

CCR COWBOY CUT 5048Z

CCR MS 4045 TIME 7322T

ASR AUGUSTUS Z2165

SVS RISE N SHINE DPFZ

SVS PERFECTION PFZ2

HOOKS SHEAR FORCE 38K

LUCAS JOSIE 19K

HTP SVF IN DEW TIME

CCR MS PRETTY 4045P

RCR AUGUSTUS R54

ASR MS JORDAN W916

PVF-BF BF26 BLACK JOKER

SVS BETTINA

Adj. BW	Adj. WW	Adj. YW	CE	BW	WW	YW	ADG	MCE	Milk	MWW	EPDs % EPDs %
80	710	1018	11.9	2.3	82.4	119.2	0.23	7.2	23.7	64.9	
			35		30	40		25		35	
Stay	Doc	CW	YG	Marb	BF	REA	Shr	API	TI		
19.8	14.4	28.0	-0.49	0.12	-0.096	1.02	-0.41	138.1	79.8		
10	15		20		40	20	15	30	35		

Solid Black, Homo Black. Valley Pike is a good-looking, high volume, square-hipped Cowboy cut son who offers a unique blend of calving ease and performance. He is solid black and Homo Black too. He's from the Bettina donor cow family that produced SVS Rawhide BXPZ and his dam sells as Lot 5.



CCR COWBOY CUT 5048Z - SIRE OF LOT 51

AGE ADVANTAGE & YEARLING BULLS



LOT 52

52

SVS SALUTE GXUF

1/2 SM
1/2 AN
HOMO
POLLED
Tattoo
GXUF
ASA#
3748849
DOB
9/5/19

KESSLERS FRONTMAN R001
CONNEALY FRONT & CENTER
JAIS OF CONANGA 9585
SVS RAM ROD UPF7
SVS DIAMOND GAL XUMF
SVS DAY BREAK UMF2

CONNEALY FRONT PAGE 0228
KESSLERS BELL 0024
CONNEALY RIGHT ANSWER 746
JASE OF CONANGA 4660
SAND RANCH HAND
SVS RUBY BLACK PF7A
SVS GUTS & BUTT RM10
SVS MY LADY LOVE MFC2

Adj. BW	Adj. WW	Adj. YW	CE	BW	WW	YW	ADG	MCE	Milk	MWW	EPDs
81	658	971	12.1	0.1	71.1	108.0	0.23	6.7	19.7	55.2	
				45							
Stay	Doc	CW	YG	Marb	BF	REA	Shr	API	TI		
14.1	11.8	31.1	-0.21	0.21	-0.035	0.68	-0.25	121.5	72.4		
						45					

Solid Black, Homo Black, Homo Polled, Salute is a long-yearling, half-blood SimAngus bull with balanced EPDs across the board. He displays length in a smooth package. He is heifer safe.

53

SVS SABER GZT8

PB SM
POLLED
Tattoo
GZT8
ASA#
3748884
DOB
12/15/19

SRS RIGHT-ON 22R
SVS REVEILLE BU09
SVS SNICKERDOODLE US09
SVS KEEP DREAMIN RNB1
SVS FIREFLY ZTM8
SVS TWILIGHT TMK8

SRS J914 PREFERRED BEEF
SRS G720 GILLIAN
SVS KEEP DREAMIN RNB1
SVS SANDY S019
CNS DREAM ON L186
SVS DOLLS JOKER NB10
KENCO/MF POWERLINE 204L
SVS JOKERS DARLIN MKD8

Adj. BW	Adj. WW	Adj. YW	CE	BW	WW	YW	ADG	MCE	Milk	MWW	EPDs
83	663	1024	10.2	2.3	66.1	99.6	0.21	8.3	26.2	59.2	
								15	30		
Stay	Doc	CW	YG	Marb	BF	REA	Shr	API	TI		
20.8	13.7	13.5	-0.45	-0.09	-0.094	0.72	-0.35	120.8	64.9		
4	20		40		40		45				

Black Blaze, Hetero Black, Homo Polled. Saber is a black blaze-face, hetero black, homo polled Reveille son. Reveille is a full sib to SVS Kingpin BU09, who was purchased by Accelerated Genetics. Backed by the Snickerdoodle/Sandy/Kelby cow families, Saber will be a supreme baldy female maker who should be around for years to come.

54

SVS VIRGINIA PROUD HZUL

1/2 SM
1/2 AN
POLLED
Tattoo
HZUL
ASA#
3793714
DOB
3/6/20

S A V BISMARCK 5682
S A V BRUISER 9164
S A V MISS BOBBIE 7463
SVS KEEP DREAMIN RNB1
SVS MAGNOLIA ZURL
SVS NEW DAY URL2

G A R GRID MAKER
S A V ABIGALE 0451
S A V 004 PREDOMINANT 4438
S A V MISS BOBBIE 4177
CNS DREAM ON L186
SVS DOLLS JOKER NB10
PVF-BF BF26 BLACK JOKER
SVS ROXANNE RLG2

Adj. BW	Adj. WW	Adj. YW	CE	BW	WW	YW	ADG	MCE	Milk	MWW	EPDs
80	673	1118	12.2	0.5	79.3	122.7	0.27	9.0	19.1	58.7	
					35	35	40	20			
Stay	Doc	CW	YG	Marb	BF	REA	Shr	API	TI		
14.8	11.2	35.4	-0.20	0.12	-0.036	0.68	-0.28	121.0	74.7		
		40				45					

Virginia Proud is a solid black, homo black and homo polled half blood. He offers calving ease with top 35% growth. Customers really like the Bruiser cattle. He is stout and big bodied.

55

SVS COWBOY CODE HUM1

PB SM
POLLED
Tattoo
HUM1
ASA#
3793729
DOB
3/9/20

TRIPLE C SINGLETARY S3H
CCR COWBOY CUT 5048Z
CCR MS 4045 TIME 7322T
BLACK IRISH KANSAS
SVS IRISH CREAM UMB1
SVS WHAT A DOLL MB10

HOOKS SHEAR FORCE 38K
LUCAS JOSIE 19K
HTP SVF IN DEW TIME
CCR MS PRETTY 4045P
IRISH BLACK KNIGHT
KANSAS BLACK LASS 215X
PVF-BF BF26 BLACK JOKER
PVF-BF BG10 DOLL BE22

Adj. BW	Adj. WW	Adj. YW	CE	BW	WW	YW	ADG	MCE	Milk	MWW	EPDs
81	623	1004	10.8	2.3	76.9	115.9	0.24	9.0	23.0	61.4	
						45		10			
Stay	Doc	CW	YG	Marb	BF	REA	Shr	API	TI		
20.2	12.9	28.5	-0.42	0.13	-0.089	0.88	-0.42	136.3	76.5		
10	30			45			15	30			

Solid Black, Homo Black, Homo Polled. Cowboy Code is a solid black, homo black, homo polled son of the hard-to-get Cowboy Cut. His rock-solid maternal pedigree with Black Irish Kansas and What A Doll creates a pedigree that will be hard to replicate!



SVS REVEILLE BU09 - SIRE OF LOT 53



LOT 54

55

SVS WESTWARD HO HCAW

PB SM
POLLED
Tattoo
HCAW
ASA#
3793705
DOB
3/7/20

HOOK`S YELLOWSTONE 97Y
CLRS AFTER SHOCK 604 A
HOOKS SARITA 4S
SVS VICTORY ZL7E
SVS HONEYSUCKLE CAWS
SVS WHISTLIN` DIXIE AWSA

HOOKS TAURUS 24T
HOOKS SHEYENNE 77S
HOOKS SHEAR FORCE 38K
HOOKS PEARL 22-P
SRS RIGHT-ON 22R
SVS BLACK RUBY LB7B
ELLINGSON LEGACY M229
SVS BROWN SUGAR WS8A

Adj. BW	Adj. WW	Adj. YW	CE	BW	WW	YW	ADG	MCE	Milk	MWW	EPDs
85	660	1067	11.4	1.1	76.1	113.1	0.23	4.4	20.8	58.8	
			40	40							
Stay	Doc	CW	YG	Marb	BF	REA	Shr	API	TI		
16.5	14.3	34.3	-0.38	0.07	-0.095	0.77	-0.34	128.0	75.6		
	15	30			40						

Solid Black, Hetero Black, Homo Polled. Westward Ho is solid black, Hetero Black and Homo Polled. He is a big spread bull and goes back to the Brown Sugar cow. His dam, Honeysuckle, sells as Lot 4!

YEARLING BULLS

S7

SVS BAD TO THE BONE HCZ7

PB SM

POLLED

Tattoo

HCZ7

ASA#

3793756

DOB

3/10/20

CCR COWBOY CUT 5048Z

WS PROCLAMATION E202

WS MISS SUGAR C4

WS ALL-AROUND Z35

SVS SWISS MISS CZR7

SVS GINGHAM ZRF7

TRIPLE C SINGLETARY S3H

CCR MS 4045 TIME 7322T

CLRS GRADE-A 875 A

WS ANISE A71

WS BEEF KING W107

CDI MS HIGH ROLLER 39W

SVS HUMDINGER TR21

SVS RUBALINA RFB7



LOT 57

Adj. BW	Adj. WW	Adj. YW	CE	BW	WW	YW	ADG	MCE	Milk	MWW	EPDs % EPDs %
87	751	1299	11.6	1.1	97.5	144.8	0.30	7.0	27.2	75.9	
			40	40	2	4	15	30	25	4	
Stay	Doc	CW	YG	Marb	BF	REA	Shr	API	TI		
17.8	14.9	48.6	-0.35	0.31	-0.083	0.95	-0.38	152.5	95.1		
30	10	4		15		35	30	10	2		

Solid Black, Homo Black, Homo Polled. Bad To The Bone is a solid, homo black and homo polled son of the most used son of the great Sugar cow, Proclamation. His semen is limited so take advantage of this bull ready for service. Not only is he great looking but he is in the top % for API and TI. He'll add a bit of stretch and a touch of frame. All the work is done, just turn him out with your cows. Bad To The Bone should be staying at SVS.



LOT 58

S8

SVS HAMMER DOWN HBPZ

PB SM

POLLED

Tattoo

HBPZ

ASA#

3793709

DOB

3/11/20

HOOKS TAURUS 24T

HOOK'S YELLOWSTONE 97Y

HOOKS SHEYENNE 77S

SVS SHENANDOAH ZWNA

SVS GENEVA BPFZ

SVS PERFECTION PFZ2

HOOKS SHEAR FORCE 38K

HOOKS PEACHES 48-P

SRS J914 PREFERRED BEEF

TRIPLE C TEARS P02C

ELLINGSON LEGACY M229

SVS LADY BUG WNBA

PVF-BF BF26 BLACK JOKER

SVS BETTINA

Black Blaze, Homo Black, Homo Polled. Hammer Down is a black blaze-face, homo black, homo polled, ultra-fancy, purebred bull that is as good as we have raised. He is sharp-fronted and great structured. Backed by the Bettina cow family that produced SVS Rawhide, Hammer Down is a looker too! He has it all and should be on everyone's list.

Adj. BW	Adj. WW	Adj. YW	CE	BW	WW	YW	ADG	MCE	Milk	MWW	EPDs % EPDs %
74	723	1090	12.3	2.1	77.1	115.2	0.24	7.5	26.2	64.8	
			30					20	30	35	
Stay	Doc	CW	YG	Marb	BF	REA	Shr	API	TI		
16.3	10.6	33.1	-0.46	0.03	-0.104	0.93	-0.36	125.8	75.1		
		35	35		20	40	40				

YEARLING BULLS



LOT 59

59

SVS COWBOY LIFE HYRG

PB SM

TRIPLE C SINGLETARY S3H

HOOKS SHEAR FORCE 38K

POLLED

CCR COWBOY CUT 5048Z

LUCAS JOSIE 19K

Tattoo

CCR MS 4045 TIME 7322T

HTP SVF IN DEW TIME

HYRG

SVS HUMDINGER TR21

CCR MS PRETTY 4045P

ASA#

SVS CANDLE LIGHT YRLG

CNS DREAM ON L186

3793720

SVS ROXANNE RLG2

SVS REBEKAH RM21

DOB

SVS ROXANNE RLG2

BF K065 TALLADEGA

3/12/20

SVS CATS MEOW LGC2

Adj. BW	Adj. WW	Adj. YW	CE	BW	WW	YW	ADG	MCE	Milk	MWW	EPDs %
84	751	1130	10.0	3.4	88.7	124.0	0.22	5.6	29.4	73.7	
					15	30			15	10	
Stay	Doc	CW	YG	Marb	BF	REA	Shr	API	TI		EPDs %
17.9	14.4	34.2	-0.44	0.10	-0.094	0.96	-0.44	130.4	81.6		
30	15	30	45		40	30	10	45	30		

Black Star, Homo Black, Homo Polled. Cowboy Life has white on his face, is homo black and homo polled. He is an exceptional son of the hard-to-get Cowboy Cut and traces back to an amazing Talladega cow. He will sire powerful, fast-growing, white-faced calves who are in high demand. His maternal sibling, Dixie's Dame, sells as Lot 38. Lots of maternal ability and growth in this bull!



LOT 60

60

SVS FIRE ON THE MOUNTAIN HXRB

PB SM

WS BEEF MAKER R13

HOOKS SHEAR FORCE 38K

POLLED

WS BEEF KING W107

DCR MS RIBEYE N72

Tattoo

WS MISS DREAMBOAT T17

CNS DREAM ON L186

HXRB

SVS GOLD FINGER SLF2

WS MISS FULL LOAD P176

ASA#

SVS RASPBERRY XR8B

SS GOLDMINE L42

3793773

SVS RHINESTONE R87B

SVS LUCINDA

DOB

SVS RHINESTONE R87B

PVF-BF BF26 BLACK JOKER

3/12/20

COTT RED SILK 887H

Adj. BW	Adj. WW	Adj. YW	CE	BW	WW	YW	ADG	MCE	Milk	MWW	EPDs %
77	778	1141	10.6	2.3	83.6	116.6	0.21	6.2	24.1	65.8	
					25	45		45	45	30	
Stay	Doc	CW	YG	Marb	BF	REA	Shr	API	TI		EPDs %
17.6	7.9	28.0	-0.58	0.08	-0.124	1.09	-0.31	129.9	79.4		
35			2		2	15		45	35		%

Solid Red, Homo Polled. Fire On The Mountain is a solid Red, Homo Polled bull with a mostly black pedigree. He is long-bodied, deep and stout, and ranks well across the board. With Red Silk in his pedigree, and his super fancy red blaze-face dam, Raspberry, his females should be tremendous.



LOT 61

61

SVS RING OF FIRE HZL7

PB SM

WS PRIME BEEF Z8

WS BEEF KING W107

POLLED

SVS SUNDANCE CWSA

HSF MISS SKY 87U

Tattoo

SVS BROWN SUGAR WS8A

GWS EBONYS TRADEMARK 6N

HZL7

SVS HUMDINGER TR21

SVS SEA WIND S87A

ASA#

SVS DIXIE DELITE ZLB7

CNS DREAM ON L186

3793762

SVS BLACK RUBY LB7B

SVS REBEKAH RM21

DOB

SVS BLACK RUBY LB7B

BLACK IRISH KANSAS

3/13/20

SVS RUBY RED

Adj. BW	Adj. WW	Adj. YW	CE	BW	WW	YW	ADG	MCE	Milk	MWW	EPDs %
78	850	1177	11.1	2.9	89.4	129.6	0.25	6.1	28.9	73.6	
			45		10	20	40	45	15	10	
Stay	Doc	CW	YG	Marb	BF	REA	Shr	API	TI		EPDs %
14.9	7.2	36.5	-0.44	-0.02	-0.097	0.96	-0.24	121.2	80.0		
		25	45		40	30			35		

Red Blaze, Hetero Polled. Ring of Fire is a highly sought-after red blaze-face who is hetero polled. He offers exceptional growth and maternal ability in a stout, powerful package. Sundance and Humdinger add the power, Black Ruby adds the style.

YEARLING BULLS



C. Lytle
SVS WHAT A DOLL MB10 - DAM OF LOTS 62 & 63

62											
SVS DIESEL SMOKE HM1A											
PB SM	CNS DREAM ON L186					NICHOLS LEGACY G151					
POLLED	KAPPES TRAILBLAZER S516					CNS SHEEZA DREAM K107W					
Tattoo	KAPPES SADIE M166					PVF PREFERRED EDGE 717G					
HM1A	PVF-BF BF26 BLACK JOKER					KAPPES STOP LIGHT J35					
ASA#	SVS WHAT A DOLL MB10					HARTS BLACK CASINO B408					
3793770	PVF-BF BG10 DOLL BE22					PVF-BF MABELLE C131					
DOB						LRS PREFERRED STOCK 370C					
3/13/20						PVF-BF BE22 DAKOTA DOLL					
Adj. BW	Adj. WW	Adj. YW	CE	BW	WW	YW	ADG	MCE	Milk	MWW	EPDs %
82	715	1087	8.6	2.9	77.9	114.4	0.23	6.9	20.1	59.0	
				45			30				
Stay	Doc	CW	YG	Marb	BF	REA	Shr	API	TI		EPDs %
16.3	5.2	36.2	-0.51	-0.31	-0.118	1.00	-0.39	101.1	65.0		
		25	15		10	25	25				

Black Blaze, Homo Black, Homo Polled. Here is an absolute sale feature. Not every day do you get a chance to add black-blaze face, homo black and homo polled, direct sons of the great What A Doll. These flush-mates are very similar in type, long-sided with solid EPDs. We lost What a Doll last year at 18 years of age, so we doubt that any more of her offspring will ever be offered. As a calf at side on her dam, a potential Canadian customer begged us to sell her. We didn't, and that was definitely the right decision. She was an amazingly productive female who left an extremely positive impact on our herd. She will be missed. This is a unique opportunity to own her genetics.

63											
SVS COUNTRY LIFE HM1B											
PB SM	CNS DREAM ON L186					NICHOLS LEGACY G151					
POLLED	KAPPES TRAILBLAZER S516					CNS SHEEZA DREAM K107W					
Tattoo	KAPPES SADIE M166					PVF PREFERRED EDGE 717G					
HM1B	PVF-BF BF26 BLACK JOKER					KAPPES STOP LIGHT J35					
ASA#	SVS WHAT A DOLL MB10					HARTS BLACK CASINO B408					
3793769	PVF-BF BG10 DOLL BE22					PVF-BF MABELLE C131					
DOB						LRS PREFERRED STOCK 370C					
3/15/20						PVF-BF BE22 DAKOTA DOLL					
Adj. BW	Adj. WW	Adj. YW	CE	BW	WW	YW	ADG	MCE	Milk	MWW	EPDs %
80	672	986	8.6	3.1	79.6	116.9	0.23	6.9	20.1	59.8	
				40	45		30				
Stay	Doc	CW	YG	Marb	BF	REA	Shr	API	TI		EPDs %
16.3	5.2	35.7	-0.51	-0.31	-0.118	0.99	-0.39	101.4	65.9		
		25	15		10	25	25				

64											
SVS VIRGINIA SPIRIT HAM1											
PB SM	WS PRIME BEEF Z8					WS BEEF KING W107					
POLLED	SVS SUNDANCE CWSA					HSF MISS SKY 87U					
Tattoo	SVS BROWN SUGAR WS8A					GWS EBONYS TRADEMARK 6N					
HAM1	SVS RAM ROD UPF7					SVS SEA WIND S87A					
ASA#	SVS WILD CHILD AM10					SAND RANCH HAND					
3793788	SVS WHAT A DOLL MB10					SVS RUBY BLACK PF7A					
DOB						PVF-BF BF26 BLACK JOKER					
3/15/20						PVF-BF BG10 DOLL BE22					
Adj. BW	Adj. WW	Adj. YW	CE	BW	WW	YW	ADG	MCE	Milk	MWW	EPDs %
82	663	1122	9.7	2.3	73.0	110.5	0.23	5.4	23.1	59.6	
Stay	Doc	CW	YG	Marb	BF	REA	Shr	API	TI		EPDs %
14.1	6.4	27.8	-0.46	-0.01	-0.098	0.89	-0.27	114.0	70.7		
		35			40						

Solid Black, Hetero Black, Homo Polled. Virginia Spirit is a solid black, hetero black and homo polled bull who combines some of our best cow makers, including Doll. This Sundance son puts it all together with style, depth, power and performance in a moderate frame.

I live about 30 minutes from Lisa and Shenandoah Valley Simmentals. I take the opportunity three to four times a year to walk through the cattle and see what's evolving in Lisa's breeding program. Over the years I have purchased many females and bulls. The bulls have been for myself as well as producers I purchased for in the Midwest. The females have been super productive. The heifers out of these cows are eye-appealing keepers that carry the productivity of their mothers. The cattle are calm, easy to work with and productive.

- Bob Threewitts, Twin Oaks Farm
Keezletown, VA

YEARLING BULLS



65

SVS THUNDER ROLLS HDUM

PB SM

TJ MAIN EVENT 503B

MR NLC UPGRADE U8676

POLLED

TJ TEARDROP 783F

TJ MISS NEW DAY U14

Tattoo

TJ MS 38W

DIKEMANS SURE BET

HDUM

SRS RIGHT-ON 22R

SRS J914 PREFERRED BEEF

ASA#

SVS BONNIE BLUE DUM1

SRS G720 GILLIAN

3793725

SVS IRISH CREAM UMB1

BLACK IRISH KANSAS

DOB

3/16/20

Adj. BW	Adj. WW	Adj. YW	CE	BW	WW	YW	ADG	MCE	Milk	MWW	EPDs % EPDs %
81	687	1147	12.5	1.1	79.0	121.9	0.27	6.6	32.4	71.8	
			30	40	40	30	25	35	4	10	
Stay	Doc	CW	YG	Marb	BF	REA	Shr	API	TI		
18.7	12.2	35.8	-0.35	0.01	-0.085	0.77	-0.33	132.4	77.4		
20	40	25						40	45		

Solid Black, Homo Black, Homo Polled. Wake Up Here! Thunder Rolls is as solid black, homo black and homo polled Teardrop son. Teardrop is no longer on the market and the semen bring upwards of \$200 a unit. This is a great looking bull out of nearly impossible genetics to get a hold of, backed by our What A Doll cow family. Thunder Rolls should be staying here, but we continually offer our best genetics.

66

SVS JUST IN TIME HEY9

PB SM

HOOKS TAURUS 24T

HOOKS SHEAR FORCE 38K

POLLED

HOOK `S YELLOWSTONE 97Y

HOOKS PEACHES 48-P

Tattoo

HOOKS SHEYENNE 77S

SRS J914 PREFERRED BEEF

HEY9

SVS SHENANDOAH ZWNA

TRIPLE C TEARS P02C

ASA#

SVS SWEET TALKIN ` EYW9

ELLINGSON LEGACY M229

3793778

SVS CELEST YW19

SVS LADY BUG WNBA

DOB

3/16/20

Adj. BW	Adj. WW	Adj. YW	CE	BW	WW	YW	ADG	MCE	Milk	MWW	EPDs %
86	657	1037	12.4	1.5	79.1	118.3	0.25	8.2	26.0	65.4	
			30	45	40	40	40	15	30	30	
Stay	Doc	CW	YG	Marb	BF	REA	Shr	API	TI		EPDs %
17.4	11.4	32.8	-0.44	0.10	-0.102	0.88	-0.40	133.8	78.7		EPDs %
35		35	45		20		20	35	40		EPDs %

Solid Black, Homo Black. Just In Time is a solid black, homo black bull who is heifer safe and has top growth as an added bonus. He's smooth and clean-lined and is backed by Kelby genetics. You can't go wrong here.

67

SVS 2ND AMENDMENT HE09

PB SM

HOOKS TAURUS 24T

HOOKS SHEAR FORCE 38K

POLLED

HOOK `S YELLOWSTONE 97Y

HOOKS PEACHES 48-P

Tattoo

HOOKS SHEYENNE 77S

SRS J914 PREFERRED BEEF

HE09

WS ALL-AROUND Z35

TRIPLE C TEARS P02C

ASA#

SVS CUT A RUG EY09

WS BEEF KING W107

3793777

SVS LEATHER N LACE YS09

CDI MS HIGH ROLLER 39W

DOB

3/18/20

Adj. BW	Adj. WW	Adj. YW	CE	BW	WW	YW	ADG	MCE	Milk	MWW	EPDs %
83	686	1086	12.9	1.2	88.7	131.5	0.27	8.2	24.4	68.7	
			25	40	15	15	25	15	40	20	
Stay	Doc	CW	YG	Marb	BF	REA	Shr	API	TI	EPDs %	
18.3	11.2	38.4	-0.39	0.15	-0.099	0.82	-0.37	143.1	85.8		
25		20		40	40		35	20	15		

Solid Black, Homo Black, Homo Polled. 2nd Amendment is a solid black, homo black and homo polled bull. He is heifer safe, high growth and is derived from our Sandy cow family. With sound EPDs and rock solid genetics, here's a bull to take your herd to the next level.

68

SVS STANDING TALL HERK

PB SM

GW LUCKY ACE 076TS

GW LUCKY ONE 686K

POLLED

WLE LAST CALL Y716

GW MISS 1407 866P

Tattoo

WLE TALLULAH N716

WLE POWER STROKE

HERK

LRS ELEVATE 213B

YC MISS NBD D26-4

ASA#

SVS SECRET LOVE ERK8

HOOK `S YELLOWSTONE 97Y

3793767

SVS RAVEN RKD8

LRS MS DUAL FOCUS 213Z

DOB

3/19/20

Adj. BW	Adj. WW	Adj. YW	CE	BW	WW	YW	ADG	MCE	Milk	MWW	EPDs %
85	637	1003	12.9	1.6	70.2	104.6	0.21	8.8	22.9	57.9	
			25					10			EPDs %
Stay	Doc	CW	YG	Marb	BF	REA	Shr	API	TI		
14.8	7.9	23.6	-0.42	0.03	-0.092	0.79	-0.34	121.6	71.2		
					40						

Solid Black, Homo Black, Hetero Polled. Standing Tall is solid black, homo black and hetero polled. He is heifer safe and offers a fresh pedigree for our long-time customers. His maternal granddam, Raven, was a fancy donor in our program too.

69

SVS EAGLE IN FLIGHT HCZL

PB SM

HOOK `S YELLOWSTONE 97Y

HOOKS TAURUS 24T

POLLED

SVS BUSTIN ` LOOSE EYR7

HOOKS SHEYENNE 77S

Tattoo

SVS SHINING STAR YRL7

SRS RIGHT-ON 22R

HCZL

DIKEMANS SURE BET

SVS ROSEBUD RLB7

ASA#

SVS SPARKLES CZL7

TJ 57J THE GAMBLER

3793757

SVS DIXIE DELITE ZLB7

MEGAN 9M

DOB

3/31/20

Adj. BW	Adj. WW	Adj. YW	CE	BW	WW	YW	ADG	MCE	Milk	MWW	EPDs %
76	714	1089	12.5	1.9	80.2	117.5	0.23	6.8	30.3	70.3	
			30		35	40		30	10	15	
Stay	Doc	CW	YG	Marb	BF	REA	Shr	API	TI	EPDs %	EPDs %
18.8	13.4	30.1	-0.45	0.11	-0.103	0.85	-0.42	136.5	79.5		
20	25		40		20		15	30	35		

Solid Black, Homo Black, Homo Polled. Eagle In Flight is a solid black, homo black and homo polled, heifer safe bull with a big spread and outstanding indexes. His maternal granddam is the fanciest Humdinger daughter we have. This bull is special.

YEARLING BULLS

70

SVS HILLBILLY PROUD HBW9

PB SM

TJ SHARPER IMAGE 809U

DIKEMANS SURE BET

POLLED

SVS BADLANDS BSNL

T J MISS BANDO S27

Tattoo

SVS SUGAR-N-SPICE SNL2

SS GOLDMINE L42

HBW9

SRS RIGHT-ON 22R

SVS NORLENE NLF2

ASA#

SVS DIXIE DREAM BW09

SRS J914 PREFERRED BEEF

3793783

SVS MISS FRISKY WS09

SRS G720 GILLIAN

DOB

SVS SLEDGE HAMMER TM10

3/31/20

SVS SANDY S019

Adj. BW	Adj. WW	Adj. YW	CE	BW	WW	YW	ADG	MCE	Milk	MWW	Side Fat
77	635	1010	9.3	2.0	66.9	100.6	0.21	4.3	21.8	55.2	
											Side Fat
Stay	Doc	CW	YG	Marb	BF	REA	Shr	API	TI		
16.9	11.6	21.0	-0.33	0.05	-0.081	0.56	-0.36	119.6	68.0		Side Fat
40	45						40				

Solid Black, Homo Black, Homo Polled. Hillbilly Proud is solid black, homo black and homo polled. He is STOUT and has the strut. This Badlands son of the Sandy cow family, will add pounds, flash and flare to your next calf crop.



LOT 70

72

SVS LIBERTY FOR ALL HZWB

PB SM

MR NLC UPGRADE U8676

ELLINGSON LEGACY M229

POLLED

SVS PATRIOT CXT7

MS NLC MOJO S6119 B

Tattoo

SVS MOLASSES XTP7

SVS HUMDINGER TR21

HZWB

SVS RELOAD WPF7

SVS TINA TP87

ASA#

SVS HIGH HEELS ZWMB

SRS RIGHT-ON 22R

3793716

SVS DELILAH WMBB

SVS RUBY BLACK PF7A

DOB

CIRCLE S LEACHMAN 600U

4/3/20

SVS WHAT A DOLL MB10

Adj. BW	Adj. WW	Adj. YW	CE	BW	WW	YW	ADG	MCE	Milk	MWW	EPDs %
85	689	1011	9.5	3.6	78.8	118.3	0.25	4.5	28.5	67.9	
					40	40	40		15	20	
Stay	Doc	CW	YG	Marb	BF	REA	Shr	API	TI	EPDs %	
15.8	12.8	33.3	-0.54	0.01	-0.120	1.05	-0.33	118.3	73.9		
	30	35	5		10	20					

Black Blaze, Homo Black, Homo Polled. Liberty for All is a black blaze-face, homo black and homo polled bull who will add growth, length and muscle to his calves, and being from the What A Doll cow family, should sire front-pasture replacement females.

73

SVS BOJANGLES HECA

PB SM

WS ALL-AROUND Z35

WS BEEF KING W107

POLLED

SVS EVERCLEAR FAR2

CDI MS HIGH ROLLER 39W

Tattoo

SVS SPELLBOUND ARK2

SRS RIGHT-ON 22R

HECA

CLRS AFTER SHOCK 604 A

SVS ROSANNE RKC2

ASA#

SVS MOUNTAIN LASS ECXA

HOOK'S YELLOWSTONE 97Y

3793703

SVS FASCINATION CX9A

HOOKS SARITA 4S

DOB

SVS DEEP ROCK 12U

4/6/20

SVS LILY XS19

Adj. BW	Adj. WW	Adj. YW	CE	BW	WW	YW	ADG	MCE	Milk	MWW	EPDs %
79	686	1128	12.4	2.0	84.1	122.1	0.24	5.8	20.5	62.6	
			30		25	30				45	
Stay	Doc	CW	YG	Marb	BF	REA	Shr		API	TI	EPDs %
18.6	11.7	31.8	-0.40	0.11	-0.098	0.77	-0.35		136.4	80.2	
20	45	40			40		45		30	35	

Solid Black, Homo Black, Homo Polled. Bojangles is a solid black, homo black and homo polled bull with tons of depth, style and growth. He is heifer safe and offers the unique genetic combination of the Lily cow family and Sandy Acres Simmental's Deep Rock 12U. This bull is a looker.



SVS EVERCLEAR FAR2 - SIRE OF LOT 74

74

SVS NO NONSENSE HEZ7

PB SM

WS ALL-AROUND Z35

WS BEEF KING W107

POLLED

SVS EVERCLEAR FAR2

CDI MS HIGH ROLLER 39W

Tattoo

SVS SPELLBOUND ARK2

SRS RIGHT-ON 22R

HEZ7

CCR COWBOY CUT 5048Z

SVS ROSANNE RKC2

ASA#

SVS BLACK IVORY EZL7

TRIPLE C SINGLETARY S3H

3793753

SVS DIXIE DELITE ZLB7

CCR MS 4045 TIME 7322T

DOB

SVS HUMDINGER TR21

4/6/20

SVS BLACK RUBY LB7B

Adj. BW	Adj. WW	Adj. YW	CE	BW	WW	YW	ADG	MCE	Milk	MWW	EPDs %
74	674	1043	12.8	1.8	85.4	123.8	0.24	7.4	29.2	71.8	
			25		20	30		25	15	10	
Stay	Doc	CW	YG	Marb	BF	REA	Shr	API	TI	EPDs %	
19.4	13.3	32.0	-0.41	0.13	-0.095	0.83	-0.38	140.6	82.7		
15	25	40		45	40		30	25	25		

Solid Black, Hetero Black, Homo Polled. No Nonsense is a solid black, hetero black and homo polled bull who is heifer safe and is high carcass and exceptional on growth. His fancy first calf heifer dam did a great job here!

YEARLING BULLS



Macqueen

LOT 75

Solid Red, Homo Polled. Comin' In Hot is a fancy papa!!! He's a perfectly-made, solid red, homo polled bull. He is a high maternal, high growth bull with heavy muscle and loads of pizzazz. He's sure to be a crowd pleaser on sale day!

75

SVS COMIN' IN HOT HET8

PB SM

WS ALL-AROUND Z35

WS BEEF KING W107

POLLED

SVS EVERCLEAR FAR2

CDI MS HIGH ROLLER 39W

Tattoo

SVS SPELLBOUND ARK2

SRS RIGHT-ON 22R

HET8

SVS SHARP SHOOTER XPL7

SVS ROSANNE RKC2

ASA#

SVS LIL RED WAGON ETM8

SVS KEEP DREAMIN RNB1

3793768

DOB

4/29/20

SVS TWILIGHT TMK8

KENCO/MF POWERLINE 204L

SVS JOKERS DARLIN MKD8

Adj. BW	Adj. WW	Adj. YW	CE	BW	WW	YW	ADG	MCE	Milk	MWW	EPDs %
81	760	1120	11.2	3.1	86.5	127.6	0.26	7.4	27.2	70.4	
			45		15	20	35	25	25	15	
Stay	Doc	CW	YG	Marb	BF	REA	Shr	API	TI		EPDs %
19.1	12.3	31.6	-0.45	-0.04	-0.095	0.94	-0.31	127.7	77.6		
15	35	40	40		40	35			45		

76

SVS PATRIOT SON HA33

PB SM

MR NLC UPGRADE U8676

ELLINGSON LEGACY M229

POLLED

SVS PATRIOT CXT7

MS NLC MOJO S6119 B

Tattoo

SVS MOLASSES XTP7

SVS HUMDINGER TR21

HA33

SVS GOLD FINGER SLF2

SVS TINA TP87

ASA#

SVS WILDFIRE AN33

SS GOLDMINE L42

3793794

DOB

5/4/20

SVS BLACK SNAP-CRACKLE-P

SVS LUCINDA

BF K030 RED SNAPPER

PVF-BF BH33 HH 101 BD12

Adj. BW	Adj. WW	Adj. YW	CE	BW	WW	YW	ADG	MCE	Milk	MWW	EPDs %
84	717	1180	10.0	4.3	83.2	118.8	0.22	4.3	30.7	72.3	
					25	40			10	10	
Stay	Doc	CW	YG	Marb	BF	REA	Shr	API	TI		EPDs %
17.1	11.5	31.3	-0.53	0.05	-0.112	1.05	-0.31	123.0	76.7		
40		45	10		10	20					

Solid Black, Hetero Black, Homo Polled. Patriot Son is solid black, hetero black and homo polled. Use him on mature cows to add pounds, muscle and stretch. His daughters should be exceptional producers.

77

SVS GRAND SLAM HXP7

PB SM

MR NLC UPGRADE U8676

ELLINGSON LEGACY M229

POLLED

SVS PATRIOT CXT7

MS NLC MOJO S6119 B

Tattoo

SVS MOLASSES XTP7

SVS HUMDINGER TR21

HXP7

SVS KEEP DREAMIN RNB1

SVS TINA TP87

ASA#

SVS BUTTERNUT XPD7

CNS DREAM ON L186

3793763

DOB

5/8/20

SVS PAULETTE PDY7

SVS DOLLS JOKER NB10

BF K065 TALLADEGA

SVS LEADERS RED ROSE

Adj. BW	Adj. WW	Adj. YW	CE	BW	WW	YW	ADG	MCE	Milk	MWW	EPDs %
84	665	1090	9.8	3.2	76.8	110.5	0.21	4.9	27.0	65.3	
									25	30	
Stay	Doc	CW	YG	Marb	BF	REA	Shr	API	TI		EPDs %
17.0	12.3	30.7	-0.52	0.04	-0.115	1.01	-0.33	121.9	73.5		
40	35	45	10		10	25					

Solid Black, Hetero Black, Homo Polled. Grand Slam is a young solid black, hetero black and homo polled bull for use on mature cows. Backed by the Leader's Red Rose donor cow family, he'll add style, depth and performance to any set of calves. His daughters should be super replacement females too.

SPRING COW-CALF PAIRS



GIBBS 5063C HOME RUN - SIRE OF LOT 80

80

HST G14 HOME RUN

3/4 SM
1/4 AN
HOMO
POLLED

Tattoo
G14

ASA#
3685429

DOB
3/1/19

CONSIGNOR: HUNIGAN FARM

J BAR J NIGHTRIDE 225Z

GIBBS 5063C HOME RUN

GIBBS 3291A DAISY 0609X

ASR AUGUSTUS Z2165

HST D20 AUGUSTUS

GIBBS 4377B JUDI Y531

GW PREMIUM BEEF 021TS

J BAR J MISS ND 793X

S D S GRADUATE 006X

GIBBS 0609X DAISY 8152U

RCR AUGUSTUS R54

ASR MS JORDAN W916

RCR STETSON T17

SSF BLK JUDI Y531

Adj. BW	Adj. WW	CE	BW	WW	YW	ADG	MCE	Milk	MWW	EPDs %
70		16.1	-2.6	66.3	99.5	0.21	8.0	12.8	45.9	
		15	10				30			
Stay	Doc	CW	YG	Marb	BF	REA	Shr	API	TI	EPDs %
18.6	15.5	28.4	-0.31	0.18	-0.063	0.74	-0.54	137.2	72.2	
10	10		25		25	35	1	35		

80A: Bull Calf / ASA# 3876444 / DOB: 3/12/21 / Tattoo: J91

Adj. BW: 77# / Sired by TJ STONE COLD 336G (ASA# 3611790)

CE 16.6 | BW -3.2 | WW 80.1 | YW 119.7 | API 151.4 | TI 83.4

G14 is also from the heart of our replacements. We used Gibbs Home Run extensively for a few years and he made tremendous females that have been very productive. G14 is already doing an awesome job with her TJ Stone Cold bull calf. There is tremendous value and potential with this pair.



TJ STONE COLD 336G - SIRE OF LOT 81A

81

HST G09 AJAX

3/4 SM
3/16 AN
1/16 CS
POLLED

Tattoo
G09

ASA#
3685425

DOB
3/16/19

CONSIGNOR: HUNIGAN FARM

GIBBS 2905Z MR CLEAN

BGIBBS 5381C AJAX

PVF-S 3A11 DAISY 0X13

RCR STETSON T17

C02 STETSON HFS

A08 GM HFS

KAPPES CROSSOVER W42

GIBBS 0628X DIXIE 8135U

RCR STETSON T17

PVF-S 0X13 HY DAISY 8U06

HOOKS SHEAR FORCE 38K

RCR SADIE R29

SS EBONYS GRANDMASTER

Y02 01L HFS

Adj. BW	Adj. WW	CE	BW	WW	YW	ADG	MCE	Milk	MWW	EPDs %
73		10.4	1.0	67.0	98.2	0.19	4.6	25.8	59.3	
								25		
Stay	Doc	CW	YG	Marb	BF	REA	Shr	API	TI	EPDs %
17.1	13.9	27.2	-0.34	0.43	-0.070	0.73	-0.39	133.7	74.9	
25	25		20	30	25	35	25	40		

81A: Bull Calf / ASA# 3876443 / DOB: 3/14/21 / Tattoo: J90

Adj. BW: 72# / Sired by TJ STONE COLD 336G (ASA# 3611790)

CE 14.9 | BW -2.6 | WW 77.4 | YW 114.4 | API 152.2 | TI 84.6

These two Ajax daughters are the pick of our replacement females that calved this spring. Their structure and perfect udders are sure to make them productive cows for years to come. Take a look at their calves to see that they are proving their worth. G09 has a stout baldie bull out of TJ Stone Cold. G22 has a stud bull too out of WS Proclamation.



BGIBBS 5381C AJAX - SIRE OF LOTS 81-82

82

HST G22 AJAX

5/8 SM
3/8 AN
HOMO
POLLED

Tattoo
G22

ASA#
3685437

DOB
3/17/19

CONSIGNOR: HUNIGAN FARM

GIBBS 2905Z MR CLEAN

BGIBBS 5381C AJAX

PVF-S 3A11 DAISY 0X13

SS EBONYS GRANDMASTER

PRATT'S BLACKBIRD 10X2

ECHO RIDGE RITA B0116

KAPPES CROSSOVER W42

GIBBS 0628X DIXIE 8135U

RCR STETSON T17

PVF-S 0X13 HY DAISY 8U06

PVF-BF BF26 BLACK JOKER

SOSF EBONYS JOY L-123

G A R PREDESTINED

G A R PRIME TIME B011

Adj. BW	Adj. WW	CE	BW	WW	YW	ADG	MCE	Milk	MWW	EPDs %
75		8.4	1.8	69.7	107.1	0.23	3.3	23.5	58.3	
								45		
Stay	Doc	CW	YG	Marb	BF	REA	Shr	API	TI	EPDs %
16.5	13.1	38.6	-0.16	0.54	-0.032	0.62	-0.33	135.7	77.3	
30	35	30		15				35		

82A: Bull Calf / ASA# 3876445 / DOB: 3/16/21 / Tattoo: J92

Adj. BW: 75# / Sired by WS PROCLAMATION E202 (ASA# 3254156)

CE 12.1 | BW -0.2 | WW 81.9 | YW 121.9 | API 161.6 | TI 92.5

These two Ajax daughters are the pick of our replacement females that calved this spring. Their structure and perfect udders are sure to make them productive cows for years to come. Take a look at their calves to see that they are proving their worth. G09 has a stout baldie bull out of TJ Stone Cold. G22 has a stud bull too out of WS Proclamation.

SPRING COW-CALF PAIRS

83

AH2 MS MILEY G935

CONSIGNOR: HEISHMAN CATTLE COMPANY

POLLED

Tattoo

G935

ASA#

PENDING

DOB

4/15/19

Adj. BW	Adj. WW	CE	BW	WW	YW	ADG	MCE	Milk	MWW	EPDs	%	EPDs	%
Stay	Doc	CW	YG	Marb	BF	REA	Shr	API	TI				

83A: Heifer Calf / ASA# Pending / Additional information available sale day
Information pending on this female with the American Simmental Association, details available sale day.

Bid Online
DVAuction

84

AH2 MS ERICA G932

CONSIGNOR: HEISHMAN CATTLE COMPANY

3/4 SM

1/4 AN

POLLED

Tattoo

G932

ASA#

3875871

DOB

4/17/19

MR NLC UPGRADE U8676
AH2 UPGRADE D609
JF LADY 865U
JF MILESTONE 999W
AH2 MS ERICA D601
SILVERADO R9 ERICA 320

ELLINGSON LEGACY M229
MS NLC MOJO S6119 B
WSJ ENCORE
ESM52
TNT TOP GUN R244
MS MAXIE LOU M112S
S A F 598 BANDO 5175
V T 6807 TRAVELER R9

Adj. BW	Adj. WW	CE	BW	WW	YW	ADG	MCE	Milk	MWW	EPDs	%	EPDs	%
72		8.2	3.8	86.2	129.2	0.27	3.2	21.3	64.3				
				15	20	40			30				
Stay	Doc	CW	YG	Marb	BF	REA	Shr	API	TI				
13.1	10.1	37.5	-0.28	0.14	-0.070	0.72	-0.32	111.3	74.7				
		35	35		25	40							

84A: Bull Calf / ASA# Pending / Additional information available sale day



MR NLC UPGRADE U8676 - GRANDSIRE OF LOT 84

85

HST G27 GRADUATE

CONSIGNOR: HUNIGAN FARM

5/8 SM

1/4 CS 1/8

AN

POLLED

Tattoo

G27

ASA#

3685442

DOB

4/28/19

S D S GRADUATE 006X
HST D99 GRADUATE
GIBBS 4186B PLWGIRL9300W
BRS SWEET SPOT 6S88
Y16 SS HFS
R16

HOOKS SHEAR FORCE 38K
S D S QUEEN 814U
GW ROBUST 605Z
GIBBS 9300W PLOWGIRL2P16
WLE BS BENCHMARK
CLW-PVF BITTER SWEET K88

Adj. BW	Adj. WW	CE	BW	WW	YW	ADG	MCE	Milk	MWW	EPDs	%	EPDs	%
69		13.8	-0.6	66.8	99.9	0.21	7.6	25.5	58.9				
		30	30				40	25					
Stay	Doc	CW	YG	Marb	BF	REA	Shr	API	TI				
14.0	12.0	24.0	-0.41	0.12	-0.078	0.87	-0.37	118.9	70.2				
		10			15	15	35						

85A: Bull Calf / ASA# 3876446 / DOB: 3/15/21 / Tattoo: J93
Adj. BW: 94# / Sired by WS PROCLAMATION E202 (ASA# 3254156)
CE 12.2 | BW 1.2 | WW 87.0 | YW 128.5 | API 147.9 | TI 89.3

Another stout female from our front pasture. SDS Graduate influenced genetics rarely misses the maternal target. G27 is no exception. Check out her WS Proclamation sired bull calf. We have used Proclamation quite a bit and his calves don't miss.



WS PROCLAMATION E202 - SIRE OF LOT 85A

AGE ADVANTAGE BULLS



86

AH2 TWO STEP G954

CONSIGNOR: HEISHMAN CATTLE COMPANY

PB SM

WS A STEP UP X27

SS EBONY'S GRANDMASTER

POLLED

RGRS SRG TWO STEP 20Z ET

WS MS MACHO U38

Tattoo

WLTR LYDIA 39U ET

3C MACHO M450 BZ

G954

SVF/NJC BUILT RIGHT N48

J&J QUEEN 414

ASA#

HPF MS MELODY X309

CNS DREAM ON L186

3875872

HPF MS MELODY M011

NJC EBONY ANTOINETTE

DOB

HPF MS MELODY M011

HC POWER DRIVE 88H

9/17/19

DEEP CREEK MS 600U H807

Adj. BW	Adj. WW	Adj. YW	CE	BW	WW	YW	ADG	MCE	Milk	MWW	EPDs %
85			10.0	2.2	62.6	85.4	0.14	6.3	21.8	52.0	
								40			
Stay	Doc	CW	YG	Marb	BF	REA	Shr	API	TI		EPDs %
16.3	7.2	18.9	-0.30	0.08	-0.066	0.55	-0.30	119.8	65.3		

Heifner

RGRS SRG TWO STEP 20Z ET - SIRE OF LOT 86



87

AH2 ANCHOR G953

CONSIGNOR: HEISHMAN CATTLE COMPANY

PB SM

CCR COWBOY CUT 5048Z

TRIPLE C SINGLETARY S3H

POLLED

CCR ANCHOR 9071B

CCR MS 4045 TIME 7322T

Tattoo

CCR MS BARB 2120Z

CCR TRIBUTE 4078X

G953

R&R CHAMBERLAIN X744

CCRMS10430FPREC1023 7035

ASA#

AH2 MS HONEYDEW D629

MR NLC UPGRADE U8676

3875873

HTP/SVF HONEYDEW T94

R&R MISS TRAVELER T744

DOB

HTP/SVF HONEYDEW T94

CNS DREAM ON L186

10/10/19

HTP SVF HONEYDEW

Adj. BW	Adj. WW	Adj. YW	CE	BW	WW	YW	ADG	MCE	Milk	MWW	EPDs %
53			13.3	0.0	76.2	110.2	0.21	4.9	20.9	60.0	
			20	20							
Stay	Doc	CW	YG	Marb	BF	REA	Shr	API	TI		EPDs %
17.3	14.6	29.6	-0.31	0.37	-0.061	0.77	-0.42	152.3	84.2		
35	15			10			15	10	20		

CCR ANCHOR 9071B - SIRE OF LOT 87



88

AH2 MILESTONE G967

CONSIGNOR: HEISHMAN CATTLE COMPANY

PB SM

TNT TOP GUN R244

TNT GUNNER N208

POLLED

JF MILESTONE 999W

TNT MISS SADIE M68

Tattoo

MS MAXIE LOU M112S

BLACK BEAR

G967

SVF/NJC BUILT RIGHT N48

MADISON M213M

ASA#

HPF MS MELODY X309

CNS DREAM ON L186

3875874

HPF MS MELODY M011

NJC EBONY ANTOINETTE

DOB

HPF MS MELODY M011

HC POWER DRIVE 88H

11/1/19

DEEP CREEK MS 600U H807

Adj. BW	Adj. WW	Adj. YW	CE	BW	WW	YW	ADG	MCE	Milk	MWW	EPDs %
85			8.3	2.8	76.0	111.9	0.22	5.2	22.0	59.9	
Stay	Doc	CW	YG	Marb	BF	REA	Shr	API	TI		EPDs %
16.3	9.5	18.3	-0.40	-0.06	-0.098	0.62	-0.30	116.3	70.0		
					40						

Decker

HPF MS MELODY X309 - DAM OF LOTS 86 & 88

YEARLING BULL

89

DBDC MR H55

PB SM

POLLED

Tattoo H55

ASA# 3798843

DOB 2/3/20

CONSIGNOR: DUCK CREEK SIMMENTAL

R PLUS MOONSHINE 7077T

DCR MR MOON SHINE X102

DCR MS SHEARCROCK U302

ASM WIDELOAD 303B

DCR MS WIDE LOAD F55

DCR MS REDGIE Z72

TWIN-CHIEF PRINCE 203P

MISS R PLUS 5055R

LBR CROCKETT R81

DCR MS RED FORCE S44

R PLUS RELOAD 2006Z

WFL MS RED DOLL 9072W

WFL MR WESTWAY 50X

DCR MS RED FREEDOM W54

Adj. BW	Adj. WW	Adj. YW	CE	BW	WW	YW	ADG	MCE	Milk	MWW	
105	661		7.9	3.5	85.3	126.0	0.25	5.1	21.4	64.0	
					20	25	40			40	
Stay	Doc	CW	YG	Marb	BF	REA	Shr	API	TI		
15.2	12.4	36.6	-0.49	0.15	-0.107	1.05	-0.36	125.0	80.2		
	35	25	20		20	20			35		

EPDs %

EPDs

A supplement sheet will be available sale day to include updated calving information, genetic coat color and horn/poll test results, and for bulls actual weights, scrotal circumferences and hip heights.

QUICK REFERENCE TO ASA EPDS AND \$ INDEXES

Expected Progeny Differences (EPDs): EPDs are the most accurate and effective tool available for comparing genetic levels. In using EPDs, the difference between two sires' EPDs represents the unit difference expected in the performance of their progeny. For example, if sires A and B have EPDs of +10 and -5, a 15-unit difference would be expected in their progeny (moving from -5 to +10 yields 15 units). Key to using EPDs is knowing what units they are expressed in. For example, if the above case referred to weaning weight EPDs, A would be expected to sire 15-pounds more weaning weight than B. If calving ease were the trait, A would be expected to sire 15-percent more unassisted births in first-calf heifers; in other words, if B sired 30 assists in a group of 100 heifers, we'd expect A to require 15 assists. A percentile-ranking chart is required to determine where a bull's EPDs rank him relative to other bulls in the breed. For percentile rankings or more detailed information about EPDs and \$ indexes visit www.simmental.org. Listed below are the units ASA EPDs are expressed in:

All-Purpose Index (API): Dollars per cow exposed under an all-purpose-sire scenario. (See below for more details.)

Back Fat (BF): Inches of backfat.

Birth Weight (BW): Pounds of birth weight.

Calving Ease (CE): Percent of unassisted births when used on heifers.

Carcass Weight (CW): Pounds of carcass weight.

Maternal Calving Ease (MCE): Percent of unassisted births in first-calving daughters.

Milk (MLK): Pounds of weaning weight due to milk.

Marbling (MRB): Marbling score.

Maternal Weaning Weight (MWW): Pounds of weaning weight due to milk and growth.

Ribeye Area (REA): Square inches of ribeye.

Warner-Bratzler Shear Force (WBSF): Pounds of force required to shear a steak.

Stayability (STAY): Percent of daughters remaining in the cowherd at 6 years of age.

Terminal Index (TI): Dollars per cow exposed under a terminal-sire scenario. (See below for more details.)

Weaning Weight (WW): Pounds of weaning weight.

Yearling Weight (YW): Pounds of yearling weight.

Yield Grade (YG): Yield grade score.

\$ Indexes: Though EPDs allow for the comparison of genetic levels for many economically important traits, they only provide a piece of the economic puzzle. That's where \$ indexes come in. Through well-conceived, rigorous mathematical computation, \$ indexes blend EPDs and economics to estimate an animal's overall impact on your bottom line. The same technology that led to the dramatic progress in swine, poultry and dairy genetics over the last several decades was used to develop the following \$ indexes:

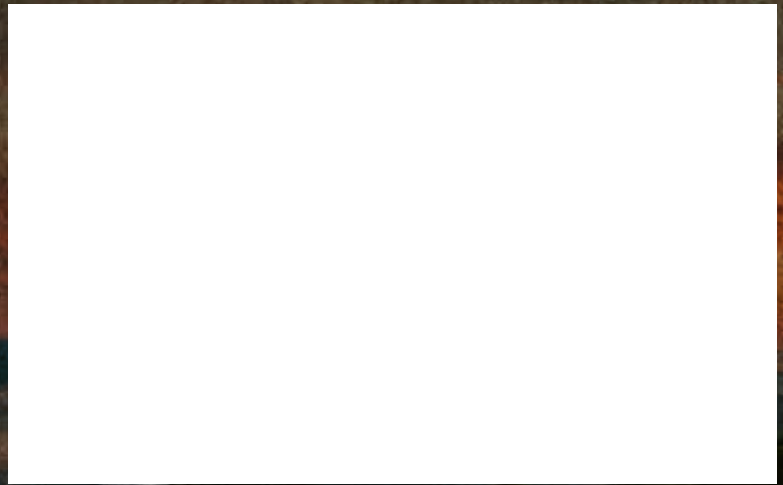
All-Purpose Index (API): Evaluates sires for use on the entire cow herd (bred to both Angus first-calf heifers and mature cows) with the portion of their daughters required to maintain herd size retained and the remaining heifers and steers put on feed and sold grade and yield.

Terminal Index (TI): Evaluates sire for use on mature Angus cows with all offspring put on feed and sold grade and yield.

Using API and TI: First, determine which index to use; if you're keeping replacements use API, if not, TI. Then, just as with EPDs, zero in on the unit difference between bulls. (As described above, index units are in dollars per cow exposed.) The difference can be used to determine how much a bull is worth compared to another. Or, put another way, how much you can pay for one bull compared to another. For example, when buying an all-purpose-type sire, you can quickly figure a bull scoring +100 for API is worth an extra \$6,000 over a +50 bull if both are exposed to 30 cows over 4 years (\$50 diff. x 30 hd. x 4 yr. = \$6,000). A percentile-ranking chart is required to determine where a bull's index value ranks him relative to other bulls in the breed. For percentile rankings or more detailed information about EPDs and \$ indexes visit www.simmental.org.



Ruble Cattle Services
1525 140th Street
Corydon, IA 50060



LOT 34



LOT 50



LOT 28



LOT 21



LOT 46

For updated sale information and videos visit
www.rublecattleservices.com or www.shenandoahvalleysimmentals.com

Catalog designed by
 **Generation 6**
marketing
www.generation6.co