

SHENANDOAH'S SHINING STARS

SATURDAY, NOVEMBER 26, 2022
AT THE FARM | QUICKSBURG, VA | 1:00 PM EST

Simmental & SimAngus Genetics

38 Age-Advantage and Yearling Bulls & 40 Pairs, Bred Females and Ready to Breed Heifers





Visit the historic Shenandoah Valley and take in the beautiful colors of the season and enjoy the nearby historic sites. Close area attractions include, Virginia Museum of Civil War: New Market State Historical Park / Shenandoah Valley Travel Association [New Market] / Andrew Zirkle Mill [Forestville] / Showalter's Orchard [Timberville] / Shenandoah Caverns [Quicksburg]

Directions to the Sale

From the North:

From I-81 take Mt. Jackson Exit# 273. Turn **RIGHT** off the ramp. Turn **LEFT** on S. Middle RD. Proceed through the next stop sign to a 4-way stop at Forestville. Go straight through the intersection onto RT. 42 South (Senedo RD.) Go approximately 0.3 and turn right on S. Middle RD. Farm is second lane on the **RIGHT**. (6 miles from interstate).

From the South:

From I-81 N take New Market Exit# 264. Turn **LEFT** off the ramp onto RT. 211 West. Turn **Right** at the stoplight at Timberville onto RT. 42 North (Senedo RD.) Turn **LEFT** on S. Middle RD. Farm is second lane on the **RIGHT**. (9 miles from interstate).

DO NOT FOLLOW GPS WHEN COMING FROM THE SOUTH. IT IS INCORRECT.



Sale Managed by Ruble Cattle Services

Jeremie Ruble, 406-581-7940 / rublecattleservices@gmail.com
1525 140th Street Corydon, IA 50060 / www.facebook.com/RubleCattleServices

www.rublecattleservices.com

SHENANDOAH'S SHINING STARS

SATURDAY, NOVEMBER 26, 2022
AT THE FARM | QUICKSBURG, VA | 1:00 PM EST

WELCOME FELLOW CATTLEMEN AND CATTLEWOMEN!

Hello Everyone!

It's sale time and we're SUPER excited about this offering. It truly is the best yet! Please join us Saturday, November 26th at 1:00 pm in the beautiful Shenandoah Valley of Virginia.

We've been breeding Simmentals for 46 years in the mountains of rural Virginia. This herd is our pride and joy. The cattle are treated with respect, well-cared for, and always eat before we do. Our motto is "Home of the Keepin' Kind" and the cattle in this offering are definitely keepers! We're committed to sharing our top genetics and you can buy with confidence.

Many fads have come and gone, but we've continued to breed proven, practical, predictable cattle that thrive in many environments. We focus on maintaining original cow family genetics that got us where we are today. We don't just focus on numbers. Look at these beauties! Oldies are still goodies!!! Cattle pay our bills and these cattle flat out perform.

These beauty-gorgeous ladies are high maternal, performance females. They're "pasture pretty" and should excel as unique donors and highly productive brood cows. For through the roof numbers, breed them to hot new sires and watch their genetic potential explode. Having spring and fall calving herds gives us flexibility to keep our calving season tight. If a heifer needs a little more grow time before breeding, we breed her early the next season. We believe that "slow growing" females results in a much more productive cow.



Lisa Zirkle, Owner

Please note that in Spring 2023 no females will be offered.

Our sales event will be bulls only. So, if you're looking for front pasture females, now is your chance!

The bulls are athletes, developed in Virginia range conditions, not in a dry lot. They're designed to efficiently convert grass to meat, thrive on fescue, travel rough country, and withstand the wide weather extremes experienced in these mountains.

We also have unique embryos from powerful donors and semen from outstanding sires available private treaty. These are one-of-a-kind, outcross genetics you won't find anywhere else.

Please visit our website for the on-line catalog and videos and contact me with any questions. Sale time is an extended family reunion where friends gather to talk cow. It continually amazes us how many long-term friendships develop from the simple purchase of a cow. We appreciate our customers who believe not just in our cattle, but the program behind them.

A sincere thanks to those good-hearted, dedicated friends who help make this sale possible, with special thanks to Barry Armstrong for his help year-round.

Cattle will be available for viewing after 2 pm Friday, November 25. Stay safe, healthy and happy my friends. Hope to see you sale day!

Hope to see you soon! - Lisa Zirkle



**SHENANDOAH VALLEY
SIMMENTALS**

Lisa Zirkle, Owner | 540-335-1885 (cell)
3691 S Middle Road Quicksburg, VA 22847
Fax: 540-740-3014 | Email: lisaz1@shentel.net
Barry Armstrong, 540-975-1474

 Shenandoah Valley Simmentals, Boers, and Tunis
www.shenandoahvalleysimmentals.com

WELCOME

On behalf of Ruble Cattle Services and Shenandoah Valley Simmentals, we would like to welcome you to this year's fall sale. We have the great pleasure of once again working with Miss Lisa Zirkle as a sales management team. It is truly remarkable to work with such a storied program that has been breeding Simmental cattle in the mountains of rural Virginia since 1976. Their motto, "Home of the Keepin' Kind" could not be more accurate. The bulls are perfectly developed out in the open range and because of this, they are athletic and ready to breed cows as soon as you take them home. Both the bulls and females are from top-of-the-line cow families proven to work on fescue and in range conditions. The entire offering is a great blend of maternal and performance with forage-converting efficiency bred in and time-tested! When you purchase cattle from Shenandoah Valley Simmentals you are making an investment in a program that has been here in the past and will be here long into the future. This sale offering will be one of the best in the country for rugged bulls and top-end females in all stages of production. It is hard to find this many front-end females and bulls, especially in a purebred package anywhere in the country. Miss Lisa has done a masterful job of breeding and developing the lots in this year's production sale. This fall I visited all the pastures and development areas with Miss Lisa. I didn't think we could top the quality of last year's sale, but Miss Lisa sure did. Lisa's cattle work for her she doesn't have to work for them. I promise they will go home and work for you! I will be out a few day ahead of the sale diligently taking notes on the entire offering.

Please feel free to contact any of our sale management team with regards to any questions you may have. We are here to serve you in any capacity.

- Jeremie Ruble, Ruble Cattle Services



406-581-7940 (cell)
515-850-8741
rublecattleservices@gmail.com
www.rublecattleservices.com



SALE CONSULTANTS & STAFF

Jeremie Ruble, Ruble Cattle Services	406-581-7940
Jeremie Ruble, Ruble Cattle Services, alt. number	515-850-8741
Lisa Zirkle, Shenandoah Valley Simmentals	540-335-1885
Martin Macqueen, Consultant	540-839-9494
Martin Macqueen, alt. number	540-965-2199
Dalton Lundy, Consultant	502-727-6898
Jeff Stansberry, Auctioneer	615-479-1852
Charlie Strickler, Ring Service	540-718-7793
Phil Richardson, Ring Service	865-250-1375
Miles Eddy, Ring Service	507-841-1787

TRUCKING

Lowell Caplinger, Trucking	540-560-9293
Dick Coleman, Trucking	765-461-0954
Craig Kaisand, Trucking	641-891-9666
Menno Bontrager, Trucking	641-247-1469
Brian Wyatt, Trucking	423-240-5533
Tyson Berg, Trucking	304-257-3419
Duane Whiting, Trucking	304-377-9179

VETERINARIAN

Dr. Justin Hill, Herd Veterinarian	540-879-2581
------------------------------------	--------------

SALE LOCATION

Shenandoah Valley Simmentals
3691 S. Middle Road
Quicksburg, VA 22847

Directions and sale map available on the inside front cover.

VIDEOS

Videos of all the lots will be available prior to the sale at
www.dvauction.com and ShenandoahValleySimmentals.com

SALE MANAGER

Ruble Cattle Services
Jeremie Ruble, cell. 406-581-7940
Jeremie Ruble, alt. number. 515-850-8741
1525 140th Street Corydon, IA 50060
rublecattleservices@gmail.com
www.facebook.com/RubleCattleServices
www.rublecattleservices.com

TERMS AND CONDITIONS

All Animals will be sold in accordance with suggested guidelines of the American Simmental Association.

ANNOUNCEMENTS

Announcements made sale day take precedence over printed material in the catalog or other printed material associated with the sale.

SALE REGISTRATION AND PAYMENT

Buyer numbers will be issued with a valid ID, and payment is due the day of the sale, unless prior arrangements have been made. Timely payment of purchases is much appreciated.

HOUSING YOUR PURCHASE

Bulls and females will be fed and cared for free of charge for one week following the sale and will be housed at a rate of \$5.00 per day thereafter until you pick up your purchase. All animals must be picked up by December 10, 2022 to allow SVS space to develop new cattle.

INSURANCE

Insurance will be available sale day or by asking any of the team members. We strongly recommend Jame Kreiger 812-208-0956



We are proud of our heritage and our farm's history. We strive to preserve the past to honor those before us.

LIABILITY

All persons attending the sale do so at their own risk. Shenandoah Valley Simmentals assumes no responsibility, legal or otherwise, for personal injury or loss while attending the sale, or for damages, illnesses, accidents or theft. All cattle are at the purchaser's risk as soon as sold. Assistance will be given in loading and shipping of cattle, but no risk is assumed by anyone associated with the sale.

ACCOMMODATIONS

Quality Inn Shenandoah Valley..... 540-740-3141
 162 W Old Cross Rd, New Market, VA 22844
 Holiday Inn Express Woodstock..... 540-459-5000
 1130 Motel Dr, Woodstock, VA 22664
 Courtyard by Marriott 540-432-3031
 1890 Evelyn Byrd Ave, Harrisonburg, VA 22801

REGISTRATION AND UPDATED EPDS

All cattle will be registered with the American Simmental Association. Please note EPDs may change from the time the sale book is printed until the registration papers are transferred. EPDs printed in the catalog were pulled from IGS on November 12, 2022. Shenandoah Valley Simmentals will transfer cattle to the buyer at the seller's expense after full payment is received. Buyers must provide the sale clerk with complete information for transferring registration certificates.

HERD HEALTH

All females will sell with proper health certificates for immediate interstate shipment. The bred females have been pregnancy examined and are confirmed safe, unless otherwise posted or announced. For cattle leaving Virginia, a Certificate of Veterinary Inspection will be available for immediate shipment. Cattle that require additional tests will be conducted within one week of the sale at the buyer's expense. Each animal will be at the purchaser's risk immediately following the auction.

LIVE BROADCAST

DVAuction Tech Support 402-316-5460
 Bid live online at www.dvauction.com

Bid Online

DVAuction

BULL GUARANTEE

All bulls have passed a complete breeding soundness examination performed by a veterinarian. All bulls are guaranteed for breeding soundness and injury for the first breeding season, defined as 90 days from the first turnout, barring abuse, neglect and poor management practices. If a replacement bull is needed, one of equal value will be provided. If a replacement bull is not available, a sale credit will be provided to use at the next SVS sale minus the documented salvage value of the previous purchase.

SEMEN INTEREST

Shenandoah Valley Simmentals will be selling full possession and 70% semen interest of all bulls and retaining 30% semen interest. The buyer has full control, full possession, 100% of the salvage value and 70% semen interest. Any bulls that Shenandoah Valley Simmentals wishes to collect for in-herd use semen will be done at the buyer's convenience and Shenandoah Valley Simmental's expense. This will affect very few bulls.

FEATURE COW FAMILIES



SVS SNICKERDOODLE US09
PB SM / ASA# 2494168
SVS KEEP DREAMIN RNB1 X SVS SANDY S019



SVS WHAT A DOLL MB10
PB SM / ASA# 2161707
PVF-BF BF26 BLACK JOKER X PVF-BF BG10 DOLL BE22



SVS RIGHT AS RAIN ASOA
PB SM / ASA# 2947439
MR NLC UPGRADE U8676 X SVS SANDY S019



SVS SANDY S019
PB SM / ASA# 2371234
BLACK IRISH KANSAS X COTT KELBY 019K



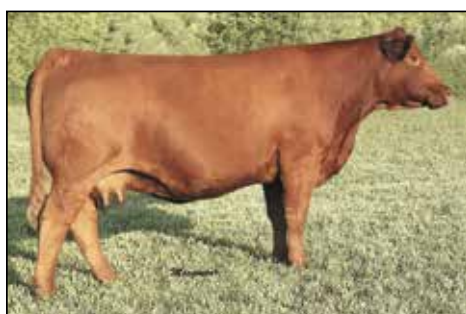
SVS LILY XS19
PB SM / ASA# 2591380
SVS HUMDINGER TR21 X SVS SARAH S19K



COTT KELBY 019K
PB SM / ASA# 2064474
MR BEEF E141 X COTTONWOOD ENHANCED 809D



SVS LADY BUG WNBA
PB SM / ASA# 2536068
CNS DREAM ON L186 X SVS DOLLS JOKER NB10



SVS BROWN SUGAR WS8A
PB SM / ASA# 2542863
GWS EBONYS TRADEMARK 6N X SVS SEA WIND S87A



COTT RED SILK 887H
PB SM / ASA# 1975403
BBS ZIMA D55 X NICHOLS BEAT 85U



SVS NATALIE NDW7
PB SM / ASA# 2202896
BF K030 RED SNAPPER X SVS LEADERS RED LADY

FEATURE SIRES



SVS BADLANDS BSNL
3/4 SM 1/4 AN / ASA# 2947416
TJ SHARPER IMAGE 809U X SVS SUGAR-N-SPICE SNL2



SVS RAWHIDE BXPZ
PB SM / ASA# 3000007
MR NLC UPGRADE U8676 X SVS SONG BIRD XPFZ



SVS HUMDINGER TR21
PB SM / ASA# 2452973
CNS DREAM ON L186 X SVS REBEKAH RM21



SVS BELL RINGER ANL3
PB SM / ASA# 2875231
MR NLC UPGRADE U8676 X SVS NORRICE NLJ3



SVS SHENANDOAH ZWNA
PB SM / ASA# 2652950
ELLINGSON LEGACY M229 X SVS LADY BUG WNBA



SVS RELOAD WPF7
PB SM / ASA# 2542822
SRS RIGHT-ON 22R X SVS RUBY BLACK PF7A



**SHENANDOAH VALLEY
SIMMENTALS**

Lisa Zirkle, Owner | 540-335-1885 (cell)
www.shenandoahvalleysimmentals.com

**Shenandoah Valley Semen and Embryos
Available Private Treaty**

FALL COW-CALF PAIRS



Selling Choice

Introducing SVS PENNY LANE HDA7, a tremendously powerful, amazingly feminine S A V BRUISER 9164 daughter backed by SVS SNICKERDOODLE US09 genetics on the dam's side. Her bull calf is an impressive star-faced TJ CHIEF 460G son with tons of genetic potential. You'll look far and wide to find this level of performance in such an eye-appealing package with a tremendous SimAngus herdsire at side. SELLING CHOICE OF LOT 1 or 2.

1										
SVS PENNY LANE HDA7										
1/2 SM	S A V BISMARCK 5682					G A R GRID MAKER				
1/2 AN	S A V BRUISER 9164					S A V ABIGALE 0451				
POLLED	S A V MISS BOBBIE 7463					S A V 004 PREDOMINANT 4438				
BLACK	SVS REVEILLE BU09					S A V MISS BOBBIE 4177				
Tattoo	SVS DREAMIN` TREE DAT7					SRS RIGHT-ON 22R				
HDA7	SVS FORGET-ME-NOT ATN7					SVS SNICKERDOODLE US09				
ASA#						MR NLC UPGRADE U8676				
3795415						SVS THERESA TNF7				
DOB										
9/15/20										
Adj. BW	Adj. WW	CE	BW	WW	YW	ADG	MCE	Milk	MWW	EPDs %
76	727	12.6	1.3	91.2	141.6	0.31	8.3	22.6	68.1	%
				10	10	20	25		20	%
Stay	Doc	CW	YG	Marb	BF	REA	Shr	API	TI	EPDs %
13.2	12.6	39.8	-0.22	0.19	-0.044	0.75	-0.26	124.8	83.1	%
	45	25				35			35	%

1A: Bull Calf, SVS WITCH DOCTOR KHD7 / DOB: 11/01/22 / Tattoo: KHD7

Act. BW: 75# / Sired by TJ CHIEF 460G

Sells open.

FALL COW-CALF PAIRS



Macqueen

LOT 2



TJ CHIEF 460G - SIRE OF LOT 2A

of Lots 1 & 2

SVS FIELDS OF GREEN HECZ is a gorgeous, big-eared, feminine SVS STOCKADE DZS9 daughter. SVS STOCKADE DZS9, out of the SVS SANDY S019 cow family, produces females that never fail. With loads of performance and a beautiful phenotype, she should be staying here. These outcross genetics, with SVS HUMDINGER TR21 on the dam's side, are the foundation of our herd. They've worked for us for years and we're sure they'll take your herd to the next level. Her flashy, blaze-faced SimAngus TJ CHIEF 460G son will surely be special too! TJ CHIEF 460G has surfaced easily as the top TJ FROSTY 318E son in the country. His progeny are highly sought after all across the country and were the cream of the crop at the most recent Triangle J Female Sale. SELLING CHOICE OF LOT 1 or 2.

2

SVS FIELDS OF GREEN HECZ

PB SM

POLLED

BLACK

Tattoo

HECZ

ASA#

3855119

DOB

4/28/20

ELLINGSON DOMINATOR W905

SVS STOCKADE DZS9

SVS COW BELLE ZS09

CLRS AFTER SHOCK 604 A

SVS DANCIN` QUEEN ECZZ

SVS MELODY CZSZ

ELLINGSON LEGACY M229

ELLINGSON HUMMER T713

KAPPES TRAILBLAZER S516

SVS SANDY S019

HOOK`S YELLOWSTONE 97Y

HOOKS SARITA 4S

SVS FULL MOON ZSJ2

SVS DOGWOOD ZSPZ

Adj. BW	Adj. WW	CE	BW	WW	YW	ADG	MCE	Milk	MWW	EPDs %
76	599	9.6	1.7	83.4	122.2	0.24	4.8	20.7	62.3	
Stay	Doc	CW	YG	Marb	BF	REA	Shr	API	TI	EPDs %
13.8	1.2	33.3	-0.43	-0.06	-0.101	0.86	-0.32	115.0	76.0	
		35	45		15					

2A: Bull Calf, SVS OUTLAW KHEZ / DOB: 10/28/22 / Tattoo: KHEZ

Act. BW: 77# / Sired by TJ CHIEF 460G

Sells open.

FALL COW-CALF PAIRS

3

svs RAY OF HOPE GYU7

PB SM

POLLED

BLACK

Tattoo

GYU7

ASA#

3748892

DOB

9/27/19

S D S GRADUATE 006X

CCR GRAVITY 9064A

CCR MS APPLE 9332W

SRS RIGHT-ON 22R

SVS MOUNTAIN MUSIC YUS7

SVS LULLABY USP7

HOOKS SHEAR FORCE 38K

S D S QUEEN 814U

HTP SVF IN DEW TIME

CCR 992F FULLHOUSE 3249N

SRS J914 PREFERRED BEEF

SRS G720 GILLIAN

SVS KEEP DREAMIN RNB1

SVS SWEETIE SPL7

Adj. BW	Adj. WW	CE	BW	WW	YW	ADG	MCE	Milk	MWW	EPDs %
73	641	8.6	2.6	75.5	115.1	0.25	5.3	21.4	59.0	
Stay	Doc	CW	YG	Marb	BF	REA	Shr	API	TI	EPDs %
17.7	14.4	23.5	-0.37	0.05	-0.078	0.73	-0.42	123.3	72.5	
40	15						10			

3A: Bull Calf, SVS ATLAS KGY7 / DOB: 10/29/22 / Tattoo: KGY7

Act. BW: 74# / Sired by MILL BAR HICKOK 7242

Sells open.

Here's a female with a different twist to her pedigree. This fancy CCR GRAVITY 9064A daughter goes back to our prolific cornerstone donors, SVS PANSY PLF7 and SVS BLACK RUBY LB7B. There's performance and maternal ability bred into this feminine female. With loads of style, power and a beautiful head and ears, SVS RAY OF HOPE GYU7 with her MIL BAR HICKOK 7242 SimAngus bull calf are front pasture cattle!

4

svs BELLA GAU7

PB SM

POLLED

BLACK

Tattoo

GAU7

ASA#

3748878

DOB

9/30/19

HOOK'S YELLOWSTONE 97Y

CLRS AFTER SHOCK 604 A

HOOKS SARITA 4S

ELLINGSON LEGACY M229

SVS CALAMITY JANE AUS7

SVS LULLABY USP7

HOOKS TAURUS 24T

HOOKS SHEYENNE 77S

HOOKS SHEAR FORCE 38K

HOOKS PEARL 22-P

NICHOLS LEGACY G151

ELLINGSON MS PSTOCK K58

SVS KEEP DREAMIN RNB1

SVS SWEETIE SPL7

Adj. BW	Adj. WW	CE	BW	WW	YW	ADG	MCE	Milk	MWW	EPDs %
74	598	12.5	0.4	74.2	110.7	0.23	5.1	18.2	55.2	
Stay	Doc	CW	YG	Marb	BF	REA	Shr	API	TI	EPDs %
15.2	13.0	32.6	-0.45	0.03	-0.105	0.87	-0.41	125.5	74.5	
30	35	35			15		15			

4A: Bull Calf, SVS FALCON KGA7 / DOB: 10/28/22 / Tattoo: KGA7

Act. BW: 72# / Sired by TJ FROSTY 318E

Sells open.

Fancy, fancy, fancy! Here's a perfect example of the females from our time-tested donor cow families, SVS PANSY PLF7 and SVS BLACK RUBY LB7B. Just like SVS BELLA GAU7, they're super feminine, have pretty udders and are quiet as kittens. This CLRS AFTER SHOCK 604A daughter has balanced EPDs and is super good. Don't miss this opportunity to own a stout bull calf by TJ FROSTY 318E along with his outstanding dam!

5

svs EMALINE GYN1

PB SM

POLLED

BLACK

Tattoo

GYN1

ASA#

3748799

DOB

10/25/19

SVS BELL RINGER ANL3

SVS MAVERICK CXPZ

SVS SONG BIRD XPFZ

SVS SNAP SHOT UN33

SVS ALPINE PRINCESS YN1B

SVS BABY DOLL NB1B

MR NLC UPGRADE U8676

SVS NORRICE NLJ3

SVS HUMDINGER TR21

SVS PERFECTION PFZ2

SRS RIGHT-ON 22R

SVS BLACK SNAP-CRACKLE-P

BLACK MICK

PVF-BF BG10 DOLL BE22

Adj. BW	Adj. WW	CE	BW	WW	YW	ADG	MCE	Milk	MWW	EPDs %
82	688	9.1	2.3	73.6	108.4	0.22	6.2	29.1	65.9	
Stay	Doc	CW	YG	Marb	BF	REA	Shr	API	TI	EPDs %
14.7	10.2	31.0	-0.48	-0.13	-0.102	0.97	-0.35	107.7	68.5	
40	20				15	30	45			

5A: Heifer Calf, SVS MELANIE KGY1 / DOB: 10/31/22 / Tattoo: KGY1

Act. BW: 72# / Sired by TJ CHIEF 460G

Sells open.

SVS EMALINE GYN1 stems from old-school, outcross genetics combining the powerful, mainstay cow family genetics of PVF-BF BG10 DOLL BE22 with our fancy SVS MAVERICK CXPZ sire, a son of SVS BELL RINGER ANL3, one of the fanciest sires we've raised. She's smooth in her pattern, nice profiling with a beautiful udder, and solid EPDs. Just like her dam, this pretty TJ CHIEF 460G heifer calf should definitely be a keeper!



MILL BAR HICKOK 7242
SIRE OF LOT 3A



CLRS AFTER SHOCK 604 A - SIRE OF LOT 4



SVS MAVERICK CXPZ - SIRE OF LOT 5

FALL COW-CALF PAIRS

6

SVS MOUNTAIN MIST HEBJ

PB SM

POLLED

BLACK

Tattoo

HEBJ

ASA#

3793691

DOB

3/15/20

BDV TRUE GRIT 11X

BBS TRUE JUSTICE B10

BBS MISS JUSTICE Z7

SVS PATRIOT CXT7

SVS RISE ABOVE EBZJ

SVS BRIGITTE BZUJ

RCR STETSON T17

BDV MS LUCKY MAN U1

MLC MR JUSTICE W744

BBS MISS MAX U216

MR NLC UPGRADE U8676

SVS MOLASSES XTP7

SVS VICTORY ZL7E

SVS HARMONY ZU1J

Adj. BW	Adj. WW	CE	BW	WW	YW	ADG	MCE	Milk	MWW
85	758	10.7	3.1	91.9	135.6	0.27	7.8	34.6	80.5
				10	15	30	20	2	2
Stay	Doc	CW	YG	Marb	BF	REA	Shr	API	TI
17.2	15.3	33.0	-0.56	0.11	-0.117	1.12	-0.35	134.5	85.9
		10	35	3	5	10	45	45	20

EPDs % EPDs %

6A: Heifer Calf, SVS BLACK LAUREL KHEB / DOB: 10/31/22 / Tattoo: KHEB

Act. BW: 76# / Sired by TJ CHIEF 460G

Sells open.

SVS MOUNTAIN MIST HEBJ combines high performance with maternal ability. Backed by SCC LETS TANGO 124J cow family genetics and sired by BBS TRUE JUSTICE B10, she displays the phenotype of her maternal grandsire, SVS PATRIOT CXT7. She's moderate, deep, clean-fronted with a wide hip, and is a milking machine. Her TJ CHIEF 460G daughter will surely develop into an awesome female too!

8

SVS HELENA HBR7

3/4 SM

1/4 AN

POLLED

BLACK

Tattoo

HBR7

ASA#

3793758

DOB

4/24/20

SVS MILESTONE ZSP7

SVS HORNET'S NEST DZ13

SVS GREENER PASTURE ZR13

S A V PIONEER 7301

SVS COTTON CANDY BRD7

SVS RITZY RDY7

SVS HUMDINGER TR21

SVS SWEETIE SPL7

TRIPLE C SINGLETARY S3H

SVS MAMA RH13

S A V FINAL ANSWER 0035

S A V BLACKBIRD 5297

BF K065 TALLADEGA

SVS LEADERS RED ROSE

Adj. BW	Adj. WW	CE	BW	WW	YW	ADG	MCE	Milk	MWW
83	711	8.6	3.1	81.0	122.4	0.26	4.5	26.5	67.0
				35	40			20	20
Stay	Doc	CW	YG	Marb	BF	REA	Shr	API	TI
16.6	11.7	34.2	-0.32	0.10	-0.065	0.80	-0.35	113.6	72.2
		40	40	25	25	30			

EPDs % EPDs %

8A: Bull Calf, SVS SHOWBOAT KHB7 / DOB: 10/25/22 / Tattoo: KHB7

Act. BW: 73# / Sired by TJ CHIEF 460G

Sells open.

Here's the only SVS HORNET'S NEST DZ13 female being offered and SVS HELENA HBR7 is a good one! This 3/4 female has impeccable genetics on the dam's side too from our SVS LEADERS RED ROSE donor cow family. She combines growth in a feminine, long frame with a pretty udder. Her TJ CHIEF 460G bull calf is stout and bound to be an outstanding sire!

10

SVS SWEET MAGNOLIA HDZJ

PB SM

HETERO

POLLED

BLACK

Tattoo

HDZJ

ASA#

3795385

DOB

10/27/20

WS ALL-AROUND Z35

SVS EVERCLEAR FAR2

SVS SPELLBOUND ARK2

SVS BELL RINGER ANL3

SVS STILL WATER DZUJ

SVS HARMONY ZU1J

WS BEEF KING W107

CDI MS HIGH ROLLER 39W

SRS RIGHT-ON 22R

SVS ROSANNE RKC2

MR NLC UPGRADE U8676

SVS NORRICE NLJ3

SVS RAM ROD UPF7

SVS IMPRESSION U12J

Adj. BW	Adj. WW	CE	BW	WW	YW	ADG	MCE	Milk	MWW
88	677	10.0	1.8	77.2	113.9	0.23	6.3	26.2	64.8
							40	30	40
Stay	Doc	CW	YG	Marb	BF	REA	Shr	API	TI
15.8	10.6	29.7	-0.43	0.06	-0.094	0.86	-0.33	123.4	75.6
		45	45		30				

EPDs % EPDs %

10A: Bull Calf, SVS TOMBSTONE KHDJ / DOB: 11/07/22 / Tattoo: KHDJ

Act. BW: 78# / Sired by TJ JACKPOT 525D

Sells open.

SVS SWEET MAGNOLIA HDZJ, is a moderate, broody female with a beautiful head, nice udder and balanced EPDs. This SVS EVERCLEAR FAR2 daughter is backed by SCC LETS TANGO 124J cow family genetics as well as SVS BELL RINGER ANL3 on the dam's side. She's the right kind and her TJ JACKPOT 525D son is the right kind too!

7

SVS QUIET TIMES HFAD

PB SM

POLLED

BLACK

Tattoo

HFAD

ASA#

3793775

DOB

3/19/20

HOOKS TAURUS 24T

HOOK'S YELLOWSTONE 97Y

HOOKS SHEYENNE 77S

SVS BADLANDS BSNL

SVS TEA CUP FA9D

SVS TEA ROSE A9BD

HOOKS SHEAR FORCE 38K

HOOKS PEACHES 48-P

SRS J914 PREFERRED BEEF

TRIPLE C TEARS P02C

TJ SHARPER IMAGE 809U

SVS SUGAR-N-SPICE SNL2

SVS KEEP DREAMIN RNB1

SVS KELBYS BLAZE N19B

Adj. BW	Adj. WW	CE	BW	WW	YW	ADG	MCE	Milk	MWW
80	623	10.8	1.4	78.0	113.5	0.22	6.3	24.7	63.6
							40	40	45
Stay	Doc	CW	YG	Marb	BF	REA	Shr	API	TI
15.7	10.8	30.5	-0.37	0.09	-0.085	0.77	-0.38	126.2	76.8
		45					30		

EPDs % EPDs %

7A: Heifer Calf, SVS BETHANY KHFD / DOB: 10/28/22 / Tattoo: KHFD

Act. BW: 74# / Sired by TJ CHIEF 460G

Sells open.

This gorgeous pair should be staying here! Backed by COTT KELBY 019K genetics, this HOOK'S YELLOWSTONE 97Y female has balanced EPDs across the board and a phenotype to die for. Her maternal grandsire, SVS BADLANDS BSNL, stamps his females exactly like SVS QUIET TIMES HFAD. With a moderate, ultra-feminine frame, this big-eared, beautifully uddered female and her fancy heifer calf sired by TJ CHIEF 460G are surely a pair to take home!

9

SVS CHARLOTTE HA19

PB SM

POLLED

BLACK

Tattoo

HA19

ASA#

3853902

DOB

11/26/20

MR NLC UPGRADE U8676

SVS PATRIOT CXT7

SVS MOLASSES XTP7

SVS RAM ROD UPF7

SVS NORTHERN LIGHTS AS19

SVS SARAH S19K

ELLINGSON LEGACY M229

MS NLC MOJO S6119 B

SVS HUMDINGER TR21

SVS TINA TP87

SAND RANCH HAND

SVS RUBY BLACK PF7A

BLACK IRISH KANSAS

COTT KELBY 019K

Adj. BW	Adj. WW	CE	BW	WW	YW	ADG	MCE	Milk	MWW
82	618	9.6	3.7	81.9	121.4	0.25	4.3	29.1	70.0
				35	40	45		15	20
Stay	Doc	CW	YG	Marb	BF	REA	Shr	API	TI
14.9	11.1	34.8	-0.55	0.06	-0.115	1.13	-0.26	120.4	77.0
		30	4		5	10			

EPDs % EPDs %

9A: Bull Calf, SVS GOLD STRIKE KH19 / DOB: 10/24/22 / Tattoo: KH19

Act. BW: 80# / Sired by TJ GOLD 274G

Sells open.

From the COTT KELBY 019K cow family that has produced outstanding donors SVS SNICKERDOODLE US09, SVS LILY XS19, SVS RIGHT AS RAIN AS0A and SVS SANDY S019 comes SVS CHARLOTTE HA19. Her sire, SVS PATRIOT CXT7, produces high volume, extremely correct, growthy females that become exceptional brood cows and this female is no exception. She's clean in her lines and moderate in frame with a nice udder. Coupled with her impressive TJ GOLD 274G son, anyone should be proud to own this genetic package!



LOT 10

SVS EVERCLEAR FAR2 - SIRE

FALL BRED FEMALES



LOT 11



**SVS WHAT A DOLL MB10
MATERNAL GRANDDAM**

11

svs SHINE WITH THE STARS GWMB

PB SM	HOOK'S YELLOWSTONE 97Y	HOOKS TAURUS 24T
POLLED	CLRS AFTER SHOCK 604 A	HOOKS SHEYENNE 77S
BLACK	HOOKS SARITA 4S	HOOKS SHEAR FORCE 38K
<i>Tattoo</i>		HOOKS PEARL 22-P
GWMB	CIRCLE S LEACHMAN 600U	LANDRIDGE JET BLACK
<i>ASA#</i>	SVS DELILAH WMBB	BDV R52 MS BLACK KNIGHT
3748804	SVS WHAT A DOLL MB10	PVF-BF BF26 BLACK JOKER
<i>DOB</i>		PVF-BF BG10 DOLL BE22
9/12/19		

Adj. BW	Adj. WW	CE	BW	WW	YW	ADG	MCE	Milk	MWW	EPDs %
77	679	11.2	1.9	78.9	119.9	0.26	5.5	17.8	57.2	
				45	40	40				
Stay	Doc	CW	YG	Marb	BF	REA	Shr	API	TI	
15.8	12.7	37.2	-0.40	0.02	-0.098	0.84	-0.45	123.8	75.0	
	35	25			30		4			

AI'd to KBHR CIMARRON F151 on 1/20/22. PE to SVS NIGHT SKY HR7B from 2/10/22 to 5/11/22.

Old school genetics here that are still relevant today! SVS SHINE WITH THE STARS GWMB is a CLRS AFTER SHOCK 604 A daughter and a CIRCLE S LEACHMAN 600U granddaughter from our phenomenal SVS WHAT A DOLL MB10 and PVF-BF BG10 DOLL BE22 donor cow families. This star-faced beauty displays a touch of frame and stretch with clean lines, a wide top and power. Her EPDs are balanced and her disposition is exceptional. Here's a female that should be staying here!

12

svs SUNSHINE N WHISKEY GCZW

PB SM	HOOK'S YELLOWSTONE 97Y	HOOKS TAURUS 24T
POLLED	CLRS AFTER SHOCK 604 A	HOOKS SHEYENNE 77S
BLACK	HOOKS SARITA 4S	HOOKS SHEAR FORCE 38K
<i>Tattoo</i>		HOOKS PEARL 22-P
GCZW	SVS FULL MOON ZSJ2	SVS HUMDINGER TR21
<i>ASA#</i>	SVS BLACK MAGIC CZW2	SVS SALLY SJZ2
3748860	SVS NO DRAMA MAMA ZWT2	SVS RELOAD WPF7
<i>DOB</i>		SVS GOLDEN ROD WTN2
9/13/19		

Adj. BW	Adj. WW	CE	BW	WW	YW	ADG	MCE	Milk	MWW	EPDs %
77	662	11.5	1.2	78.9	114.8	0.22	4.1	20.0	59.4	
		45	45	45						
Stay	Doc	CW	YG	Marb	BF	REA	Shr	API	TI	
13.1	13.1	33.4	-0.38	0.07	-0.091	0.79	-0.35	122.1	77.0	
	30	35			30		45			

AI'd to HOOK'S FRONTLINE 40F on 1/20/22. PE to SVS NIGHT SKY HR7B from 2/10/22 to 5/11/22.

NICE describes this heifer perfectly! Here's another CLRS AFTER SHOCK 604 A female that puts it all together. SVS SUNSHINE N WHISKEY GCZW is deep, powerful and feminine. SVS HUMDINGER TR21, her maternal grandsire, left his mark here. Want style, performance and an excellent attitude? Look no further!

13

svs BORN FREE HBZB

PB SM	MR NLC UPGRADE U8676	ELLINGSON LEGACY M229
POLLED	SVS PATRIOT CXT7	MS NLC MOJO S6119 B
BLACK	SVS MOLASSES XTP7	SVS HUMDINGER TR21
<i>Tattoo</i>		SVS TINA TP87
HBZB	SVS VICTORY ZL7E	SRS RIGHT-ON 22R
<i>ASA#</i>	SVS WHIPPOORWILL BZPB	SVS BLACK RUBY LB7B
3793708	SVS SHASTA ZPFB	KAPPES TRAILBLAZER S516
<i>DOB</i>		SVS RUBY BLACK PF7A
4/2/20		

Adj. BW	Adj. WW	CE	BW	WW	YW	ADG	MCE	Milk	MWW	EPDs %
85	624	10.3	3.6	80.1	117.5	0.23	4.8	28.7	68.7	
				40	45			15	25	
Stay	Doc	CW	YG	Marb	BF	REA	Shr	API	TI	
14.3	11.8	34.3	-0.56	-0.03	-0.126	1.07	-0.28	114.7	73.9	
	45	30	3		2	15				

AI'd to HOOK'S FRONTLINE 40F on 1/20/22. PE to SVS NIGHT SKY HR7B from 2/10/22 to 5/11/22.

From the SVS RUBY BLACK PF7A cow family comes SVS BORN FREE HBZB. She's a very correct, moderate, high volume female typical of the females sired by SVS PATRIOT CXT7. This high performance heifer, with SRS RIGHT-ON 22R in her pedigree, is the type of female we strive to produce because they're just plain good!

14

svs MORNING SUNSHINE HZJ2

PB SM	HOOK'S YELLOWSTONE 97Y	HOOKS TAURUS 24T
POLLED	SVS BUSTIN' LOOSE EYR7	HOOKS SHEYENNE 77S
HETERO	SVS SHINING STAR YRL7	SRS RIGHT-ON 22R
BLACK		SVS ROSEBUD RLB7
<i>Tattoo</i>		CNS DREAM ON L186
HZJ2	SVS KEEP DREAMIN RNB1	SVS DOLLS JOKER NB10
<i>ASA#</i>	SVS GINGER ZJZ2	BOZ REDCAT D162
3793738	SVS RED SUNSET	SVS DUCHESS
<i>DOB</i>		
4/5/20		

Adj. BW	Adj. WW	CE	BW	WW	YW	ADG	MCE	Milk	MWW	EPDs %
76	535	11.5	0.5	68.9	101.8	0.21	8.0	25.8	60.3	
		45	30				15	35		
Stay	Doc	CW	YG	Marb	BF	REA	Shr	API	TI	
16.7	12.6	27.7	-0.44	-0.05	-0.107	0.77	-0.30	120.5	69.7	
	35		40		15					

AI'd to TJ JACKPOT 525D on 1/20/22. PE to SVS NIGHT SKY HR7B from 2/10/22 to 5/11/22.

This female has three highly proven donor cow families in her pedigree, SVS GINGER ZJZ2, SVS RED SUNSET and SVS ROSEBUD RLB7. SVS MORNING SUNSHINE HZJ2 is Hetero Black, so if you're looking to breed reds, this female with outcross genetics can be bred many ways to make reds in high demand today. She's feminine with long lines, and her maternal grandsire, SVS KEEP DREAMIN' RNB1, is known for siring drop dead gorgeous females. These genetics can't be found anywhere else. Take her home and see what she'll do for you!



SVS BUSTIN' LOOSE EYR7 - SIRE OF LOT 14

FALL BRED FEMALES

15

SVS MIRANDA HEAU

PB SM

POLLED

BLACK

Tattoo

HEAU

ASA#

3793693

DOB

4/11/20

ELLINGSON DOMINATOR W905

SVS STOCKADE DZS9

SVS COW BELLE ZS09

SVS SHENANDOAH ZWNA

SVS MADISON EAUM

SVS DAISY MAE AUM1

ELLINGSON LEGACY M229

ELLINGSON HUMMER T713

KAPPES TRAILBLAZER S516

SVS SANDY S019

ELLINGSON LEGACY M229

SRS LADY BUG WNBA

SRS RIGHT-ON 22R

SVS IRISH CREAM UMB1

Adj. BW	Adj. WW	CE	BW	WW	YW	ADG	MCE	Milk	MWW	EPDs %
84	564	8.4	3.1	75.3	115.3	0.25	6.0	20.4	58.0	
						45	45			
Stay	Doc	CW	YG	Marb	BF	REA	Shr	API	TI	EPDs %
15.6	-0.5	25.9	-0.49	-0.13	-0.113	0.85	-0.33	108.7	67.9	
			20		5					

AI'd to TJ GOLD 274G on 1/20/22. PE to SVS NIGHT SKY HR7B from 2/10/22 to 5/11/22.

SVS MIRANDA HEAU is another gorgeous SVS STOCKADE DZS9 daughter with beautiful big ears! With balanced EPDs and the rock solid genetics of our cornerstone donors SVS WHAT A DOLL MB10 and PVF-BF BG10 DOLL BE22 behind her, she's definitely a keeper. Her maternal grandsire, SVS SHENANDOAH ZWNA, is known for siring exceptional females like her. She's deep and super good...a brood cow extraordinaire!



LOT 15

16

SVS LIVE FREE HFZC

PB SM

POLLED

BLACK

Tattoo

HFZC

ASA#

3793776

DOB

4/26/20

ELLINGSON DOMINATOR W905

SVS STOCKADE DZS9

SVS COW BELLE ZS09

LRS ELEVATE 213B

SVS MARGUERITA FZ9C

SVS NIGHTSHADE ZX9C

ELLINGSON LEGACY M229

ELLINGSON HUMMER T713

KAPPES TRAILBLAZER S516

SVS SANDY S019

HOOK'S YELLOWSTONE 97Y

LRS MS DUAL FOCUS 213Z

SVS SHARP SHOOTER XPL7

SVS SILKY SMOOTH XN9C

Adj. BW	Adj. WW	CE	BW	WW	YW	ADG	MCE	Milk	MWW	EPDs %
82	628	9.2	2.0	79.8	118.8	0.24	6.2	23.6	63.4	
				45	45		45			
Stay	Doc	CW	YG	Marb	BF	REA	Shr	API	TI	EPDs %
16.7	-1.5	26.2	-0.47	-0.09	-0.101	0.91	-0.32	117.1	73.1	
			25		15	45				

AI'd to KBHR CIMARRON F151 on 1/20/22. PE to SVS NIGHT SKY HR7B from 2/10/22 to 5/11/22.

Don't you just love those big ears????!! SVS LIVE FREE HFZC exhibits length and a touch of frame in a very appealing way. This SVS STOCKADE DZS9 female is from the COTT KELBY 019K cow family. We used SRS ELEVATE 213B, her maternal grandsire, quite a bit and his females are exceptional. She's a versatile, performance female that can be bred many ways to produce outstanding offspring for years to come.



LOT 16

17

SVS HOT STUFF HW8A

PB SM

POLLED

RED

Tattoo

HW8A

ASA#

3795396

DOB

9/14/20

HOOKS SHEAR FORCE 38K

WS BEEF MAKER R13

DCR MS RIBEYE N72

GWS EBONY'S TRADEMARK 6N

SVS BROWN SUGAR WS8A

SVS SEA WIND S87A

NICHOLS LEGACY G151

C&D TRACY

R PLUS RED RIBEYE 1134L

DCR MISS ZINGER

WLE POWER STROKE

NJC EBONY ANTOINETTE

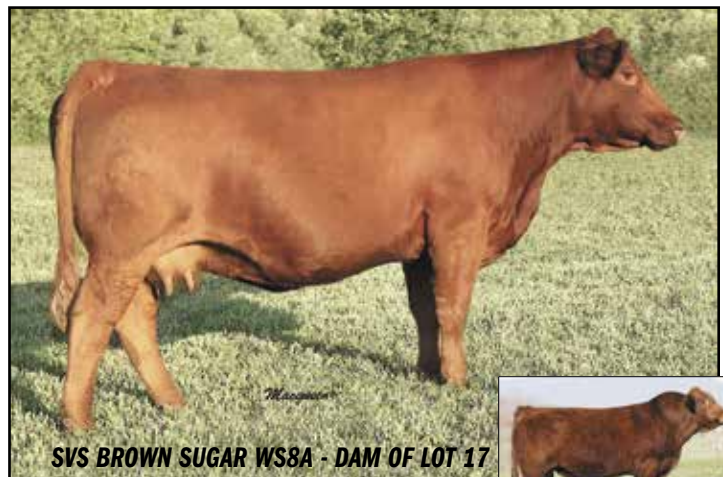
PVF-BF BF26 BLACK JOKER

COTT RED SILK 887H

Adj. BW	Adj. WW	CE	BW	WW	YW	ADG	MCE	Milk	MWW	EPDs %
72	533	9.7	2.5	77.3	109.0	0.20	3.8	23.3	61.9	
Stay	Doc	CW	YG	Marb	BF	REA	Shr	API	TI	EPDs %
16.9	12.4	31.2	-0.51	0.15	-0.098	1.11	-0.27	128.6	76.9	
	40	40	15	45	30	15				

AI'd to TJ GOLD 274G on 1/20/22. PE to SVS NIGHT SKY HR7B from 2/10/22 to 5/11/22.

Here's the only red Fall bred heifer being offered but she's a good one! SVS HOT STUFF HW8A is an embryo calf, sired by WS BEEF MAKER R13 out of our rock solid donor, SVS BROWN SUGAR WS8A, and a great granddaughter of COTT RED SILK 887H. These donor cow genetics are heavily scattered throughout our herd because they keep producing the right kind. This heifer is quiet, moderate in frame and has sound EPDs. She's a maternal sib to our performance sire, SVS SUNDANCE CWSA. Red females backed by proven, time-tested, practical genetics are hard to find. You can't go wrong here!



SVS BROWN SUGAR WS8A - DAM OF LOT 17



**SVS SUNDANCE CWSA
MATERNAL SIB**

FALL & SPRING BRED FEMALES

18 SVS PRETTY AS A PEACH HBXP

PB SM
POLLED
BLACK
Tattoo
HBXP
ASA#
3795388
DOB
9/18/20

TRIPLE C SINGLETARY S3H
CCR COWBOY CUT 5048Z
CCR MS 4045 TIME 7322T
SVS RAM ROD UPF7
SVS STEPPIN' OUT BXTF
SVS MOLASSES XTP7

HOOKS SHEAR FORCE 38K
LUCAS JOSIE 19K
HTP SVF IN DEW TIME
CCR MS PRETTY 4045P
SAND RANCH HAND
SVS RUBY BLACK PF7A
SVS HUMDINGER TR21
SVS TINA TP87

Adj. BW	Adj. WW	CE	BW	WW	YW	ADG	MCE	Milk	MWW	EPDs %
74	583	11.7	1.7	73.2	105.8	0.20	7.0	25.2	61.8	
		40					30	35		
Stay	Doc	CW	YG	Marb	BF	REA	Shr	API	TI	
19.3	13.5	23.6	-0.44	0.16	-0.092	0.85	-0.42	136.7	76.0	
25	25	40	45	30			10	40		

Ai'd to KOCH BIG TIMBER 685D on 1/20/22. PE to SVS NIGHT SKY HR7B from 2/10/22 to 5/11/22.

This CCR COWBOY CUT 5048Z daughter is extremely docile, feminine, and has outstanding EPDs. On the dam's side, she's the product of combining COTT RED SILK 887H, an amazing donor who was in the herd until 19 years of age, with our SVS RUBY BLACK PF7A donor and the extremely impressive SVS HUMDINGER TR21 sire. These genetics are proven, predictable and profitable. Don't miss this chance to put the genetics of SVS PRETTY AS A PEACH HBXP to work in your herd!

19 SVS SAIL AWAY HTPA

PB SM
POLLED
BLACK
Tattoo
HTPA
ASA#
3795410
DOB
9/19/20

ELLINGSON LEGACY M229
MR NLC UPGRADE U8676
MS NLC MOJO S6119 B
CNS DREAM ON L186
SVS TRENDY TPB1
SVS DOLL POWER PBIJ

NICHOLS LEGACY G151
ELLINGSON MS PSTOCK K58
GLS MOJO M38
GFI DARLA M410
NICHOLS LEGACY G151
CNS SHEEZA DREAM K107W
PVF-BF BF26 BLACK JOKER
PVF-BF BG10 DOLL BE22

Adj. BW	Adj. WW	CE	BW	WW	YW	ADG	MCE	Milk	MWW	EPDs %
73	618	9.8	2.8	84.4	123.1	0.24	4.6	19.6	61.8	
				25	35					
Stay	Doc	CW	YG	Marb	BF	REA	Shr	API	TI	
13.7	9.9	26.2	-0.56	0.01	-0.115	1.05	-0.41	118.0	77.4	
			3		5	20	15			

Ai'd to HOOK'S FRONTLINE 40F on 1/20/22. PE to SVS NIGHT SKY HR7B from 2/10/22 to 5/11/22.

This little lady is a performance female backed by breed greats. Sired by MR NLC UPGRADE U8676 and out of our CNS DREAM ON L186 donor, SVS TRENDY TPB1, she should become a tremendous female. SVS SAIL AWAY HTPA is an embryo calf with a sweet disposition in a moderate, feminine frame. She's backed by PVF-BF BG10 DOLL BE22 genetics, so she's bound to be special.

SPRING BRED FEMALES

20 SVS HIGH SPIRITS HEZG

PB SM
POLLED
HOMO
BLACK
Tattoo
HEZG
ASA#
3793698
DOB
3/16/20

HOOK'S YELLOWSTONE 97Y
CLRS AFTER SHOCK 604 A
HOOKS SARITA 4S
SVS SHENANDOAH ZWNA
SVS GOOD VIBRATIONS EZPG
SVS MOON DANCER ZPLG

HOOKS TAURUS 24T
HOOKS SHEYENNE 77S
HOOKS SHEAR FORCE 38K
HOOKS PEARL 22-P
ELLINGSON LEGACY M229
SVS LADY BUG WNBA
KAPPES TRAILBLAZER S516
SVS PANSY PLF7

Adj. BW	Adj. WW	CE	BW	WW	YW	ADG	MCE	Milk	MWW	EPDs %
80	540	11.7	1.0	70.6	105.5	0.22	5.7	15.3	50.5	
		40	40							
Stay	Doc	CW	YG	Marb	BF	REA	Shr	API	TI	
13.0	11.4	29.8	-0.42	-0.03	-0.101	0.79	-0.38	114.2	69.6	
		45			15		30			

PE to SVS NIGHT SKY HR7B from 7/1/22 to 9/16/22.

Here's a smooth, beautiful profiling female, with extreme length and femininity. Being from the SVS PANSY PLF7 and SVS BLACK RUBY LB7B cow families, and with SVS SHENANDOAH ZWNA as her maternal grandsire, here's another female to be proud to own. Her sire, CLRS AFTER SHOCK 604A, has produced highly functional females for us and SVS HIGH SPIRITS HEZG is no exception.

21 SVS SUN-SHINY DAY HEZJ

PB SM
POLLED
RED
Tattoo
HEZJ
ASA#
3793732
DOB
5/20/20

WS ALL-AROUND Z35
SVS EVERCLEAR FAR2
SVS SPELLBOUND ARK2
SVS SHENANDOAH ZWNA
SVS RAINBOW RIDER EZJ2
SVS GINGER ZJ22

WS BEEF KING W107
CDI MS HIGH ROLLER 39W
SRS RIGHT-ON 22R
SVS ROSANNE RKC2
ELLINGSON LEGACY M229
SVS LADY BUG WNBA
SVS KEEP DREAMIN RNB1
SVS RED SUNSET

Adj. BW	Adj. WW	CE	BW	WW	YW	ADG	MCE	Milk	MWW	EPDs %
77	617	12.8	1.0	70.3	104.4	0.21	9.1	22.1	57.2	
		25	40				10			
Stay	Doc	CW	YG	Marb	BF	REA	Shr	API	TI	
15.9	11.3	25.5	-0.44	0.00	-0.103	0.77	-0.32	122.9	71.0	
			40		15					

Ai'd to FFS JNR HARD KNOX H034 on 6/11/22. PE to SVS NIGHT SKY HR7B from 7/1/22 to 8/6/22.

SVS SUN-SHINY DAY HEZJ is the only red Spring-bred heifer in the offering. She's deep, broody and super good! With our SVS GINGER ZJ22 donor as her maternal granddam and the outstanding female producer, SVS SHENANDOAH ZWNA in her pedigree, this female, with excellent EPDs is a keeper!



LOT 20



LOT 21

SPRING BRED FEMALES

22

SVS LOLLIPOP HBZT

PB SM
POLLED
HETERO
BLACK
Tattoo
HBZT
ASA#
3795425
DOB
9/14/20

CDI AUTHORITY 77X
MG/GSC AUTHORITY W14C
OBCC MS TAILOR 14TW
WS BEEF MAKER R13
SVS TEA BERRY BZT8
SVS FIREFLY ZTM8

NF TRUMP S582
CDI MS CROCKET 88T
WESTFALL VOYAGER 721P
OBCC MISS TAILOR 14T
HOOKS SHEAR FORCE 38K
DCR MS RIBEYE N72
SVS KEEP DREAMIN RNB1
SVS TWILIGHT TMK8

Adj. BW	Adj. WW	CE	BW	WW	YW	ADG	MCE	Milk	MWW	EPDs %
80	628	9.7	2.2	78.1	116.0	0.24	5.0	27.4	66.4	
								25	30	
Stay	Doc	CW	YG	Marb	BF	REA	Shr	API	TI	EPDs %
18.9	11.5	30.3	-0.45	0.05	-0.082	1.04	-0.37	128.9	75.7	
25		45	35			20	35			

AI'd to BRIDLE BIT GPS H078 on 6/11/22. PE to SVS NIGHT SKY HR7B from 7/1/22 to 8/6/22.

This impressive heifer from the SVS JOKER'S DARLIN' MKD8 cow family, combines a bit of frame with broodiness, femininity and style. With EPDs that impress, SVS LOLLIPOP HBZT, sired be the popular MG/GSC AUTHORITY W14C, is a sweet treat!



LOT 22

23

SVS AGAINST THE WIND HBNB

PB SM
POLLED
BLACK
Tattoo
HBNB
ASA#
3853912
DOB
10/28/20

TRIPLE C SINGLETARY S3H
CCR COWBOY CUT 5048Z
CCR MS 4045 TIME 7322T
SVS KEEP DREAMIN RNB1
SVS GUM DROP BN9B
SVS KELBYS BLAZE N19B

HOOKS SHEAR FORCE 38K
LUCAS JOSIE 19K
HTP SVF IN DEW TIME
CCR MS PRETTY 4045P
CNS DREAM ON L186
SVS DOLLS JOKER NB10
HART BACK FIRE J283
COTT KELBY 019K

Adj. BW	Adj. WW	CE	BW	WW	YW	ADG	MCE	Milk	MWW	EPDs %
79	650	9.8	2.5	82.0	113.6	0.20	7.1	23.1	64.1	
				35				25	40	
Stay	Doc	CW	YG	Marb	BF	REA	Shr	API	TI	EPDs %
21.0	13.9	22.1	-0.41	0.12	-0.083	0.81	-0.44	136.3	78.3	
10	20						10	40		

AI'd to BRIDLE BIT GPS H078 on 6/11/22. PE to SVS NIGHT SKY HR7B from 7/1/22 to 8/6/22.

This CCR COWBOY CUT 5048Z blaze-face heifer has outstanding EPDs across the board and is backed by some of our best genetics on the dam's side. Combining the COTT KELBY 019K cow family with the amazing female producer, SVS KEEP DREAMIN' RNB1, resulted in a winner here! SVS AGAINST THE WIND HBNB is broody with length and a touch of frame. Here's a female that's loaded with performance and built to last!

24

SVS FREE BIRD HCSD

PB SM
POLLED
BLACK
Tattoo
HCSD
ASA#
3853908
DOB
10/30/20

MR NLC UPGRADE U8676
SVS PATRIOT CXT7
SVS MOLASSES XTP7
SVS RELOAD WPF7
SVS MISTY DAWN CSND
SVS SWEET PEA SNBD

ELLINGSON LEGACY M229
MS NLC MOJO S6119 B
SVS HUMDINGER TR21
SVS TINA TP87
SRS RIGHT-ON 22R
SVS RUBY BLACK PF7A
BF K065 TALLADEGA
SVS DOLL POWER NB1D

Adj. BW	Adj. WW	CE	BW	WW	YW	ADG	MCE	Milk	MWW	EPDs %
83	633	10.0	3.5	78.4	113.5	0.22	4.1	28.6	67.7	
								15	25	
Stay	Doc	CW	YG	Marb	BF	REA	Shr	API	TI	EPDs %
15.1	13.3	32.0	-0.56	-0.01	-0.127	1.04	-0.31	116.2	73.3	
	30	40	3		2	20				

AI'd to TJ FROSTY 318E on 6/11/22. PE to SVS NIGHT SKY HR7B from 7/1/22 to 8/6/22.

Here's SVS FREE BIRD HCSD from the PVF-BF BG10 DOLL BE22 cow family, and a good one she is! This SVS PATRIOT CXT7 daughter is a phenotypically correct, powerful, performance female. No doubt, she's going to be a tremendous brood cow and one to be proud of!



LOT 25



SVS BADLANDS BSNL
MATERNAL SIB

25

SVS CLARABELLE HSNL

PB SM
POLLED
BLACK
Tattoo
HSNL
ASA#
3853920
DOB
11/20/20

WS ALL-AROUND Z35
SVS EVERCLEAR FAR2
SVS SPELLBOUND ARK2
SS GOLDMINE L42
SVS SUGAR-N-SPICE SNL2
SVS NORLENE NLF2

WS BEEF KING W107
CDI MS HIGH ROLLER 39W
SRS RIGHT-ON 22R
SVS ROSANNE RKC2
WLE POWER STROKE
GW MISS LUCKY BUCK 858G
PVF-BF BF26 BLACK JOKER
SVS LUCINDA

Adj. BW	Adj. WW	CE	BW	WW	YW	ADG	MCE	Milk	MWW	EPDs %
73	459	11.6	1.1	61.9	85.9	0.15	5.5	20.7	51.6	
		40								
Stay	Doc	CW	YG	Marb	BF	REA	Shr	API	TI	EPDs %
17.0	11.7	18.0	-0.42	0.07	-0.104	0.61	-0.31	122.5	66.7	
					15					

AI'd to HOOK'S YELLOWSTONE 97Y on 6/11/22. PE to SVS NIGHT SKY HR7B from 7/1/22 to 8/6/22.

This blaze-face beauty is special, being a maternal sib to SVS BADLANDS BSNL who sires exceptional phenotype. SVS CLARABELLE HSNL, a SVS EVERCLEAR FAR2 son, is correct, moderate and is a brood cow in the making. This is the last daughter of SVS SUGAR-N-SPICE SNL2. She should be staying in our herd but we always offer our best!

SPRING BRED FEMALES



THE BOSSES...MOM AND SISSY!

26

SVS GREEN MEADOW JYUL

PB SM

POLLED

BLACK

Tattoo

JYUL

ASA#

3913232

DOB

2/28/21

CCR COWBOY CUT 5048Z

WS PROCLAMATION E202

WS MISS SUGAR C4

SVS SNAP SHOT UN33

SVS MARMALADE YURL

SVS NEW DAY URL2

TRIPLE C SINGLETARY S3H

CCR MS 4045 TIME 7322T

CLRS GRADE-A 875 A

WS ANISE A71

SRS RIGHT-ON 22R

SVS BLACK SNAP-CRACKLE-P

PVF-BF BF26 BLACK JOKER

SVS ROXANNE RLG2

Adj. BW	Adj. WW	CE	BW	WW	YW	ADG	MCE	Milk	MWW	EPDs %
81	652	8.9	3.5	89.6	136.4	0.29	5.2	31.8	76.5	
				15	15	20		5	5	
Stay	Doc	CW	YG	Marb	BF	REA	Shr	API	TI	EPDs %
19.8	14.8	41.0	-0.34	0.22	-0.080	0.85	-0.36	141.4	85.4	
20	15	15		30			40	30	25	

AI'd to HOOK'S EAGLE 6E on 6/11/22. PE to SVS NIGHT SKY HR7B from 7/1/22 to 8/6/22.

SVS GREEN MEADOW JYUL is the only WS PROCLAMATION E202 daughter in the offering. Backed by SVS CAT'S MEOW LGC2 cow family genetics, this female possesses extreme volume, an impressive phenotype, and an excellent disposition. With EPDs that excel in growth and maternal ability and one of the highest APIs in the offering, she's certainly a front pasture female!

27

SVS BLACK BLANCHE JBJ2

PB SM

POLLED

BLACK

Tattoo

BJJ2

ASA#

3913197

DOB

3/1/21

TRIPLE C SINGLETARY S3H

CCR COWBOY CUT 5048Z

CCR MS 4045 TIME 7322T

SVS SHENANDOAH ZWNA

SVS ANNABELLE BJZ2

SVS RED SUNSET

HOOKS SHEAR FORCE 38K

LUCAS JOSIE 19K

HTP SVF IN DEW TIME

CCR MS PRETTY 4045P

ELLINGSON LEGACY M229

SVS LADY BUG WNBA

BOZ REDCAT D162

SVS DUCHESS

Adj. BW	Adj. WW	CE	BW	WW	YW	ADG	MCE	Milk	MWW	EPDs %
78	555	11.1	1.9	72.3	106.8	0.22	7.6	23.4	59.5	
							20			
Stay	Doc	CW	YG	Marb	BF	REA	Shr	API	TI	EPDs %
17.3	13.7	25.3	-0.41	0.13	-0.091	0.78	-0.37	129.8	74.2	
45	25				30		35			

AI'd to TJ FROSTY 318E on 6/11/22. PE to SVS NIGHT SKY HR7B from 7/1/22 to 8/6/22.

Here's another beautiful SVS SHENANDOAH ZWNA granddaughter from the SVS RED SUNSET donor cow family. She's a clean-lined, high volume, feminine heifer with a puppy dog disposition. With excellent EPDs, SVS BLACK BLANCHE JBJ2, is the right kind. CCR COWBOY CUT 5048Z females are hard to find, and one this nice is as rare as hen's teeth.

28

SVS RIVER OF LOVE JFNB

PB SM

POLLED

BLACK

Tattoo

JFNB

ASA#

3913204

DOB

3/12/21

CCR COWBOY CUT 5048Z

TJ PLATTE RIVER 370D

TJ 43Z

SVS SNIPER BM10

SVS KELBY'S DOLL FN9B

SVS KELBYS BLAZE N19B

TRIPLE C SINGLETARY S3H

CCR MS 4045 TIME 7322T

TJ SHARPER IMAGE 809U

TJ 25L

SVS SHENANDOAH ZWNA

SVS WHAT A DOLL MB10

HART BACK FIRE J283

COTT KELBY 019K

Adj. BW	Adj. WW	CE	BW	WW	YW	ADG	MCE	Milk	MWW	EPDs %
79	658	10.3	2.1	73.6	104.7	0.19	6.4	25.3	62.0	
							40	35		
Stay	Doc	CW	YG	Marb	BF	REA	Shr	API	TI	EPDs %
19.1	15.6	20.7	-0.35	0.17	-0.066	0.72	-0.42	133.6	75.2	
25	10			40			10	45		

PE to calving ease Angus bull for a March or April 2023 calf.

What a blaze-face beauty! SVS RIVER OF LOVE JFNB is a TJ PLATTE RIVER 370D daughter and is from the COTT KELBY 019K cow family on the bottom side. Her genetics are packed with performance. She's broody, deep and feminine with a bit of stretch and frame. Our neighbor's calving ease, super nice Angus bull paid an unannounced visit to our pasture. Given the amazing quality of the only other "accident" we've had, we decided to see what this potentially blaze-faced SimAngus calf has to offer. Get ready for a beautiful surprise!



LOT 28

SPRING BRED FEMALES



29

SVS FAT N SASSY JANH

1/2 SM
1/2 AN
POLLED
BLACK
Tattoo
JANH
ASA#
3913235
DOB
3/3/21

S A V BISMARCK 5682
S A V BRUISER 9164
S A V MISS BOBBIE 7463
SVS RAM ROD UPF7
SVS VALENTINE AN8H
SVS NINA N87H

G A R GRID MAKER
S A V ABIGALE 0451
S A V 004 PREDOMINANT 4438
S A V MISS BOBBIE 4177
SAND RANCH HAND
SVS RUBY BLACK PF7A
BF K065 TALLADEGA
COTT RED SILK 887H

Adj. BW	Adj. WW	CE	BW	WW	YW	ADG	MCE	Milk	MWW	EPDs % EPDs %
74	575	11.5	0.9	73.6	113.4	0.25	6.9	20.0	56.7	
Stay	Doc	CW	YG	Marb	BF	REA	Shr	API	TI	
13.3	10.9	29.4	-0.24	0.17	-0.054	0.58	-0.22	115.6	71.8	
					35					

AI'd to KBHR BOLD RULER H152 on 6/11/22. PE to SVS NIGHT SKY HR7B from 7/1/22 to 8/6/22.

Super fancy! Super flashy! SVS FAT N SASSY JANH, a S A V BRUISER 9164 daughter, is a show stopper! This high volume, half-blood female from the COTT RED SILK 887H and SVS RUBY BLACK PF7A cow families is flat out good in the pasture and on paper. KBHR BOLD RULER H152 is the most popular son of WS PROCLAMATION E202. His dam BAR CK MS X38 106Z is one of the top 3/4 cow in the breed combining data & phenotype. You'll look far and wide to find a female this complete!

30

SVS GUSSIED UP JES9

PB SM
POLLED
BLACK
Tattoo
JES9
ASA#
3913226
DOB
3/16/21

KOCH BIG TIMBER 685D
TJ HEISMAN 388F
TJ 67D
SVS SHENANDOAH ZWNA
SVS FOREST MAGIC ES09
SVS SANDY S019

HOOK'S YELLOWSTONE 97Y
KOCH MS HOOKS BOY
CCR COWBOY CUT 5048Z
TJ MISS 38S
ELLINGSON LEGACY M229
SVS LADY BUG WNBA
BLACK IRISH KANSAS
COTT KELBY 019K

Adj. BW	Adj. WW	CE	BW	WW	YW	ADG	MCE	Milk	MWW	EPDs % EPDs %
74	576	10.9	0.6	72.8	114.0	0.26	7.7	22.1	58.5	
			30			40	20			
Stay	Doc	CW	YG	Marb	BF	REA	Shr	API	TI	
20.8	12.1	19.0	-0.33	0.23	-0.081	0.53	-0.38	145.2	78.4	
10	45		30				30	25		

AI'd to KBHR BOLD RULER H152 on 6/11/22. PE to SVS NIGHT SKY HR7B from 7/1/22 to 8/6/22.

Here's another good one from the SVS SANDY S019 and COTT KELBY 019K cow family and the only TJ HEISMAN 388F daughter being offered. SVS GUSSIED UP JES9 is clean-made and feminine with outstanding EPDs, and the highest Stayability and API of the Spring-bred heifers. She's another example of a SVS SHENANDOAH ZWNA granddaughter that's doing it right!

31

SVS APPLE BLOSSOM JYSZ

PB SM
POLLED
BLACK
Tattoo
JYSZ
ASA#
3913220
DOB
3/23/21

HOOK'S YELLOWSTONE 97Y
SVS BUSTIN' LOOSE EYR7
SVS SHINING STAR YRL7
SVS GOLD FINGER SLF2
SVS MONARCH YSPZ
SVS SABRINA SPKZ

HOOKS TAURUS 24T
HOOKS SHEYENNE 77S
SRS RIGHT-ON 22R
SVS ROSEBUD RLB7
SS GOLDMINE L42
SVS LUCINDA
SVS JOKERS GOLD PM10
SVS PAULA PKCZ

Adj. BW	Adj. WW	CE	BW	WW	YW	ADG	MCE	Milk	MWW	EPDs % EPDs %
82	642	9.7	2.9	80.9	115.1	0.21	6.2	28.8	69.2	
			40			45	15		20	
Stay	Doc	CW	YG	Marb	BF	REA	Shr	API	TI	
13.7	13.0	29.9	-0.49	-0.03	-0.117	0.88	-0.33	112.9	74.5	
30	45	20		5						

AI'd to KBHR BOLD RULER H152 on 6/11/22. PE to SVS NIGHT SKY HR7B from 7/1/22 to 8/6/22.

SVS APPLE BLOSSOM JYSZ is a SVS BUSTIN' LOOSE EYR7 daughter with cow family greats of SVS ROSEBUD RLB7 and SVS BLACK RUBY LB7B on the sire's side and SVS WHAT A DOLL MB10 on the dam's side. With a nice profile, clean lines and eye-appeal, this female possesses growth as well as maternal ability. In other words, she does it all!

AGE-ADVANTAGE HEIFERS

32

svs MYSTERY JAU1

PB SM

POLLED

BLACK

Tattoo

JAU1

ASA#

3913157

DOB

2/25/21

CCR COWBOY CUT 5048Z

TJ PLATTE RIVER 370D

TJ 43Z

SRS RIGHT-ON 22R

SVS DAISY MAE AUM1

SVS IRISH CREAM UMB1

TRIPLE C SINGLETARY S3H

CCR MS 4045 TIME 7322T

TJ SHARPER IMAGE 809U

TJ 25L

SRS J914 PREFERRED BEEF

SRS G720 GILLIAN

BLACK IRISH KANSAS

SVS WHAT A DOLL MB10

Adj. BW	Adj. WW	CE	BW	WW	YW	ADG	MCE	Milk	MWW	EPDs % EPDs %
64	660	12.5	1.5	79.3	118.6	0.25	7.8	30.1	69.7	
		30		45	45	45	20	10	20	
Stay	Doc	CW	YG	Marb	BF	REA	Shr	API	TI	
19.0	15.5	27.7	-0.32	0.20	-0.065	0.72	-0.44	141.7	81.0	
25	10			35			10	30	40	

Sells open.

SVS MYSTERY JAU1 is a TJ PLATTE RIVER 370D daughter backed by SVS WHAT A DOLL MB10 and PVF-BF BG10 DOLL BE22 genetics on the dam's side. TJ PLATTE RIVER 370D was selected by RCS for the Drake and Iron Creek programs in Iowa. His sons and daughters consistently surface to the top of their production sale held each February. They are a commercial cattle person's dream. Mystery is feminine and clean-lined and just plain pleasing to the eye. With loads of maternal ability and performance in her EPDs and an outstanding API, it's a mystery why she's not staying here!

33

svs DARK EYES JCZ7

PB SM

POLLED

BLACK

Tattoo

JCZ7

ASA#

3913207

DOB

2/28/21

TRIPLE C SINGLETARY S3H

CCR COWBOY CUT 5048Z

CCR MS 4045 TIME 7322T

DIKEMANS SURE BET

SVS SPARKLES CZL7

SVS DIXIE DELITE ZLB7

HOOKS SHEAR FORCE 38K

LUCAS JOSIE 19K

HTP SVF IN DEW TIME

CCR MS PRETTY 4045P

TJ 57J THE GAMBLER

MEGAN 9M

SVS HUMDINGER TR21

SVS BLACK RUBY LB7B

Adj. BW	Adj. WW	CE	BW	WW	YW	ADG	MCE	Milk	MWW	EPDs % EPDs %
74	702	11.3	2.3	91.3	129.7	0.24	6.8	26.5	72.1	
		45		10	25		30	30	15	
Stay	Doc	CW	YG	Marb	BF	REA	Shr	API	TI	
20.1	15.0	31.3	-0.41	0.25	-0.083	0.92	-0.51	148.0	88.2	
15	15	40		25		40	1	20	15	

Sells open.

Look at the performance. Look at the style. This CCR COWBOY CUT 5048Z daughter out of our SVS BLACK RUBY LB7B cow family with a good measure of SVS HUMDINGER TR21 genetics thrown in should be staying here! SVS DARK EYES JCZ7 is deep. She's nice. She's feminine. CCR COWBOY CUT 5048Z sires great daughters. His semen is very hard to come by. This is a rare opportunity to add a great heifer out of one of the all-time great-producing sires of the last decade. Females like her don't come along every day!

34

svs WILD BERRY JZW2

1/2 SM

1/2 AN

POLLED

BLACK

Tattoo

JZW2

ASA#

3913212

DOB

3/15/21

S A V BISMARCK 5682

S A V BRUISER 9164

S A V MISS BOBBIE 7463

SVS RELOAD WPF7

SVS NO DRAMA MAMA ZWT2

SVS GOLDEN ROD WTN2

G A R GRID MAKER

S A V ABIGALE 0451

S A V 004 PREDOMINANT 4438

S A V MISS BOBBIE 4177

SRS RIGHT-ON 22R

SVS RUBY BLACK PF7A

GWS EBONYS TRADEMARK 6N

SVS TIP TOP TNF2

Adj. BW	Adj. WW	CE	BW	WW	YW	ADG	MCE	Milk	MWW	EPDs % EPDs %
66	598	13.5	0.4	78.5	121.8	0.27	8.0	17.9	57.1	
		35		40	40	45	30			
Stay	Doc	CW	YG	Marb	BF	REA	Shr	API	TI	
12.4	12.1	32.0	-0.21	0.20	-0.042	0.61	-0.24	121.1	76.2	

Sells open.

What a flashy lady! With depth, width and style, this S A V BRUISER 9164 daughter is an eye-catcher! SVS WILD BERRY JZW2 is a half-blood heifer with balanced EPDs and a moderate frame. She comes from a long line of super good females, including SVS RUBY BLACK PF7A. We like our S A V BRUISER 9164 cattle and this female is no exception!



TJ PLATTE RIVER 370D - SIRE OF LOT 32



FUN IN THE MOUNTAINS!



LOT 34

AGE-ADVANTAGE HEIFERS

35

SVS JOLENE JFZ8

PB SM

POLLED

BLACK

Tattoo

JFZ8

ASA#

3913191

DOB

3/18/21

HOOK'S YELLOWSTONE 97Y

KOCH BIG TIMBER 685D

KOCH MS HOOKS BOY

CCR COWBOY CUT 5048Z

SVS SUN SHINY DAY FZT8

SVS FIREFLY ZTM8

HOOKS TAURUS 24T

HOOKS SHEYENNE 77S

GW LUCKY BOY 252U

HOOK'S YORK 51Y

TRIPLE C SINGLETARY S3H

CCR MS 4045 TIME 7322T

SVS KEEP DREAMIN RNB1

SVS TWILIGHT TMK8

Adj. BW	Adj. WW	CE	BW	WW	YW	ADG	MCE	Milk	MWW	EPDs %
79	616	11.9	-1.3	78.1	114.9	0.23	7.4	25.5	64.5	
		35	10				25	35	40	
Stay	Doc	CW	YG	Marb	BF	REA	Shr	API	TI	EPDs %
21.0	13.4	27.3	-0.29	0.23	-0.055	0.71	-0.46	150.9	83.7	
10	25			30			3	20	30	

Sells open.

What impressive EPDs and the highest API in the female offering! SVS JOLENE JFZ8 is a tremendous female in the field as well. Sired by KOCH BIG TIMBER 685D, she's deep, thick and broody...just the kind we like! And she's from the SVS JOKER'S DARLIN' MKD8 cow family that never disappoints.



LOT 35

36

SVS LUCK BE A LADY JA9B

PB SM

POLLED

BLACK

Tattoo

JA9B

ASA#

3913148

DOB

4/4/21

CCR COWBOY CUT 5048Z

SVS HIGH FLYER FASB

SVS VIRGINIA BELLE ASHA

SVS KEEP DREAMIN RNB1

SVS PATIENCE A9BB

SVS KELBYS BLAZE N19B

TRIPLE C SINGLETARY S3H

CCR MS 4045 TIME 7322T

MR NLC UPGRADE U8676

SVS SCARLETT SH2A

CNS DREAM ON L186

SVS DOLLS JOKER NB10

HART BACK FIRE J283

COTT KELBY 019K

Adj. BW	Adj. WW	CE	BW	WW	YW	ADG	MCE	Milk	MWW	EPDs %
77	616	9.8	2.1	76.8	108.2	0.20	6.8	24.5	62.9	
							30	40	45	
Stay	Doc	CW	YG	Marb	BF	REA	Shr	API	TI	EPDs %
20.5	12.4	23.0	-0.49	0.01	-0.101	0.91	-0.35	128.7	73.6	
10	40		20		15	45	45			

Sells open.

Here's another female from the COTT KELBY 019K cow family...and they're always great! SVS LUCK BE A LADY JA9B has SVS HIGH FLYER FASB as her sire and SVS KEEP DREAMIN' RNB1 as her maternal grandsire...need I say more? This clean-made, feminine heifer with balanced EPDs and exceptional longevity is destined to have a bright future in any herd!



37

SVS PENNY LANE JZR3

PB SM

POLLED

BLACK

Tattoo

JZR3

ASA#

3913198

DOB

4/10/21

CCR COWBOY CUT 5048Z

SVS HIGH FLYER FASB

SVS VIRGINIA BELLE ASHA

SVS HUMDINGER TR21

SVS CROCUS ZRE3

SVS RUTH RLE3

TRIPLE C SINGLETARY S3H

CCR MS 4045 TIME 7322T

MR NLC UPGRADE U8676

SVS SCARLETT SH2A

CNS DREAM ON L186

SVS REBEKAH RM21

PVF-BF BF26 BLACK JOKER

SVS LOLA

Adj. BW	Adj. WW	CE	BW	WW	YW	ADG	MCE	Milk	MWW	EPDs %
65	572	12.6	1.5	70.0	102.1	0.20	6.7	23.1	58.1	
		30					35			
Stay	Doc	CW	YG	Marb	BF	REA	Shr	API	TI	EPDs %
18.3	11.7	24.5	-0.49	0.01	-0.100	0.95	-0.36	127.3	70.8	
35			20		30	35	40			

Sells open.

This SVS HIGH FLYER FASB daughter is one of only two being offered. He's a CCR COWBOY CUT 5048Z son out of our fancy SVS VIRGINIA BELLE ASHA donor. This female is long and deep, and promises to be a stout brood cow just like her dam, a SVS HUMDINGER TR21 daughter. Her EPDs and pedigree are rock solid. This female will have many friends on sale day!



SVS HIGH FLYER FASB - SIRE OF LOTS 36 & 37

AGE-ADVANTAGE HEIFERS



SVS CLARABELLE GAHB - MATERNAL SIB



**SVS VIRGINIA BELLE ASHA
DAM**

I live about 30 minutes from Lisa and Shenandoah Valley Simmentals. I take the opportunity three to four times a year to walk through the cattle and see what's evolving in Lisa's breeding program. Over the years I have purchased many females and bulls. The bulls have been for myself as well as producers I purchased for in the Midwest. The females have been super productive. The heifers out of these cows are eye-appealing keepers that carry the productivity of their mothers. The cattle are calm, easy to work with and productive.

- Bob Threewitts, Twin Oaks Farm
Keezletown, VA



LOT 40

38

SVS SUMMER BREEZE JAHA

PB SM
POLLED
BLACK
Tattoo
JAH
ASA#
3913241
DOB
4/12/21

SRS RIGHT-ON 22R
SVS REVEILLE BU09
SVS SNICKERDOODLE US09
MR NLC UPGRADE U8676
SVS VIRGINIA BELLE ASHA
SVS SCARLETT SH2A

SRS J914 PREFERRED BEEF
SRS G720 GILLIAN
SVS KEEP DREAMIN RNB1
SVS SANDY S019
ELLINGSON LEGACY M229
MS NLC MOJO S6119 B
PVF-BF BF26 BLACK JOKER
SVS BLACK VANESSA

Adj. BW	Adj. WW	CE	BW	WW	YW	ADG	MCE	Milk	MWW	EPDs %
64	678	11.1	1.9	71.9	105.4	0.21	7.2	25.8	61.6	
							25	35		
Stay	Doc	CW	YG	Marb	BF	REA	Shr	API	TI	EPDs %
17.2	13.5	22.7	-0.51	-0.05	-0.114	0.89	-0.29	119.9	70.2	
	25		15		5					

Sells open.

SVS SUMMER BREEZE JAHA is a really nice SVS REVEILLE BU09 daughter. Her sire is a SVS SNICKERDOODLE US09 son, and SNICKERDOODLE is arguably the best female we've ever produced, and we've raised a lot! Add to that the style, balanced EPDs and moderate frame of this female and it's no wonder she's special. On the bottom side, she's backed by donors SVS BLACK VANESSA and her dam, SVS VIRGINIA BELLE ASHA, who's simply awesome. Here's a unique heifer!

39

SVS BLUE BAYOU JESJ

PB SM
POLLED
BLACK
Tattoo
JESJ
ASA#
3913187
DOB
5/7/21

HOOK'S YELLOWSTONE 97Y
SVS BUSTIN` LOOSE EYR7
SVS SHINING STAR YRL7
SVS SHARP SHOOTER XPL7
SVS EMMALEE ESJ2
SVS SALLY SJ22

HOOKS TAURUS 24T
HOOKS SHEYENNE 77S
SRS RIGHT-ON 22R
SVS ROSEBUD RLB7
SVS KEEP DREAMIN RNB1
SVS PANSY PLF7
BF K065 TALLADEGA
SVS RED SUNSET

Adj. BW	Adj. WW	CE	BW	WW	YW	ADG	MCE	Milk	MWW	EPDs %
75	544	11.3	1.4	77.4	111.2	0.21	6.6	30.4	69.0	
		45					35	10	20	
Stay	Doc	CW	YG	Marb	BF	REA	Shr	API	TI	EPDs %
16.2	13.2	32.6	-0.46	-0.10	-0.108	0.88	-0.32	118.0	73.0	
	30	35	30		15					

Sells open.

Here's a feminine, long-sided heifer backed by some of our best cow families on both sides of her pedigree...SVS ROSEBUD RL7B, SVS PANSY PLF7, SVS BLACK RUBY LB7B and SVS RED SUNSET. SVS BLUE BAYOU JESJ is a high maternal female who should make an exceptional cow.

40

SVS AUTUMN SUN JEA3

1/2 SM
1/2 AN
POLLED
BLACK
Tattoo
JEA3
ASA#
4074218
DOB
9/28/21

S A V BISMARCK 5682
S A V BRUISER 9164
S A V MISS BOBBIE 7463
SVS SHENANDOAH ZWNA
SVS HYDRANGEA EA33
SVS WILDFIRE AN33

G A R GRID MAKER
S A V ABIGALE 0451
S A V 004 PREDOMINANT 4438
S A V MISS BOBBIE 4177
ELLINGSON LEGACY M229
SVS LADY BUG WNBA
SVS GOLD FINGER SLF2
SVS BLACK SNAP-CRACKLE-P

Adj. BW	Adj. WW	CE	BW	WW	YW	ADG	MCE	Milk	MWW	EPDs %
76	632	12.7	0.3	75.1	116.6	0.26	8.7	19.6	57.1	
		45					20			
Stay	Doc	CW	YG	Marb	BF	REA	Shr	API	TI	EPDs %
12.5	11.2	30.2	-0.22	0.21	-0.043	0.62	-0.27	119.6	74.6	

Sells open.

SVS AUTUMN SUN JEA3 is a half-blood heifer sired once again by S A V BRUISER 9164. From the SVS BLACK SNAP-CRACKLE-POP cow family, this heifer has stretch, femininity and a strong top in an eye-appealing frame. Her EPDs are solid. Here's a very nice female!

AGE-ADVANTAGE BULLS



41

SVS ONE OF A KIND JJZ2

PB SM
HOMO
POLLED
BLACK
Tattoo
JJZ2
ASA#
3913173
DOB
3/16/21

NICHOLS LEGACY G151
CNS DREAM ON L186
CNS SHEEZA DREAM K107W
BOZ REDCAT D162
SVS RED SUNSET
SVS DUCHESS

NICHOLS BLK DESTINY D12
NICHOLS DEBRA D81
SRS FRANCHISE F601
NICHOLS JOLIETTE 107W
NLC 64Y TOMCAT
WBR MISS JUNIOR 2Z
ALPINE POLLED PROTO
HCF LADY S22

Adj. BW	Adj. WW	CE	BW	WW	YW	ADG	MCE	Milk	MWW	EPDs %
74	691	11.2	1.6	66.9	95.9	0.18	6.9	23.4	56.8	
							30			
Stay	Doc	CW	YG	Marb	BF	REA	Shr	API	TI	EPDs %
16.4	7.2	20.7	-0.49	-0.11	-0.113	0.78	-0.22	113.4	65.6	
			20		5					



S A V BRUISER 9164 - SIRE OF LOT 42

Introducing SVS ONE OF A KIND JJZ2! This Hetero Black, Homo Polled blaze-faced bull is an embryo son of CNS DREAM ON L186, the most popular Simmental sire of all time, and our "beauty-gorgeous" red-blaze face donor, SVS RED SUNSET. CNS DREAM ON L186 has his own page written in Simmental history. He is the most popular sire in recent history. With the popularity of red baldies skyrocketing pay special attention to this lot. He is a sure thing to make outstanding calves. With balanced EPDs, use this flashy, impressive, strong-topped, high volume sire to inject pizzazz into your herd!

42

SVS WESTERN WIND JY52

1/2 SM
1/2 AN
POLLED
BLACK
Tattoo
JY52
ASA#
3913159
DOB
2/24/21

S A V BISMARCK 5682
S A V BRUISER 9164
S A V MISS BOBBIE 7463
SRS RIGHT-ON 22R
SVS BUTTONS N BOWS YR52
SVS BIG TOWN RH52

G A R GRID MAKER
S A V ABIGALE 0451
S A V 004 PREDOMINANT 4438
S A V MISS BOBBIE 4177
SRS J914 PREFERRED BEEF
SRS G720 GILLIAN
BF K065 TALLADEGA
SVS BLACK LADY LUCK

Adj. BW	Adj. WW	CE	BW	WW	YW	ADG	MCE	Milk	MWW	EPDs %
66	587	13.3	-0.3	68.4	106.6	0.24	8.7	21.5	55.7	
		40	40				20			
Stay	Doc	CW	YG	Marb	BF	REA	Shr	API	TI	EPDs %
12.1	13.4	26.1	-0.19	0.19	-0.043	0.49	-0.25	116.9	70.9	
	35									

SVS WESTERN WIND JY52 is the only SimAngus long-yearling in this offering. His sire, S A V BRUISER 9164, has sired amazing progeny time and time again. This bull is a solid black, calving ease sire with plenty of growth. SVS WESTERN WIND JY52 is a frame moderating sire in a more compact package. He has a small spot in one eye from pinkeye as a calf but it doesn't affect him in any way. Folks simply love our S A V BRUISER-sired cattle and this bull is no exception!

AGE-ADVANTAGE BULLS



SVS LILY XS19 - DAM OF LOT 43

43

SVS TURBO JX9A

PB SM
HOMO
POLLED
HOMO
BLACK
Tattoo
JX9A
ASA#
3913233
DOB
3/16/21

ELLINGSON LEGACY M229
MR NLC UPGRADE U8676
MS NLC MOJO S6119 B
SVS HUMDINGER TR21
SVS LILY XS19
SVS SARAH S19K

NICHOLS LEGACY G151
ELLINGSON MS PSTOCK K58
GLS MOJO M38
GFI DARLA M410
CNS DREAM ON L186
SVS REBEKAH RM21
BLACK IRISH KANSAS
COTT KELBY O19K

Adj. BW	Adj. WW	CE	BW	WW	YW	ADG	MCE	Milk	MWW	EPDs %
81	729	8.0	3.1	85.9	125.8	0.25	3.0	21.3	64.2	
				25	30	45			40	
Stay	Doc	CW	YG	Marb	BF	REA	Shr	API	TI	EPDs %
14.8	13.9	35.4	-0.63	-0.05	-0.140	1.22	-0.32	115.1	76.7	
		20	30	1		1	4			

SVS TURBO JX9A is a Homo Black, Homo Polled embryo son out of MR NLC UPGRADE U8676 and our SVS LILY XS19 donor. Use this solid black, powerhouse sire on mature cows to increase length, add a bit of frame and muscle. With a nice, square hip, he's put together right. And on the bottom side of his pedigree SVS LILY XS19 genetics, with a big dose of SVS HUMDINGER TR21 added for good measure, are just plain good!



WLE LAST CALL Y716 - SIRE OF LOT 44

44

SVS RIDGE LINE JFN3

PB SM
HOMO
POLLED
HOMO
BLACK
Tattoo
JFN3
ASA#
3913206
DOB
3/18/21

GW LUCKY ACE 076TS
WLE LAST CALL Y716
WLE TALLULAH N716
CCR COWBOY CUT 5048Z
SVS COWBOY LACE FBN3
SVS FANDANGO BN33

GW LUCKY ONE 686K
GW MISS 1407 866P
WLE POWER STROKE
YC MISS NBD D26-4
TRIPLE C SINGLETARY S3H
CCR MS 4045 TIME 7322T
ES BLACK ICE SK31
SVS BLACK SNAP-CRACKLE-P

Adj. BW	Adj. WW	CE	BW	WW	YW	ADG	MCE	Milk	MWW	EPDs %
84	748	11.5	3.1	86.6	125.7	0.24	6.3	25.6	68.9	
		45		20	30		40	35	20	
Stay	Doc	CW	YG	Marb	BF	REA	Shr	API	TI	EPDs %
18.6	17.5	32.8	-0.40	0.13	-0.086	0.88	-0.44	135.9	81.4	
		30	2	35			10	40	35	

Raised by a first calf heifer, SVS RIDGE LINE JFN3 is a fancier, solid black bull, going back to the SVS BLACK SNAP-CRACKLE-POP cow family. He's Homo Black and Homo Polled with a quiet disposition, ample volume, and a hint of frame and stretch. Use him on mature cows to enhance performance and make super replacement females. SVS RIDGE LINE JFN3 has a bright future in any herd!



SVS EVERCLEAR FAR2 - SIRE OF LOT 45

45

SVS HOME BREW JDXF

PB SM
HOMO
POLLED
HOMO
BLACK
Tattoo
JDXF
ASA#
3913178
DOB
3/30/21

WS ALL-AROUND Z35
SVS EVERCLEAR FAR2
SVS SPELLBOUND ARK2
SVS SHENANDOAH ZWNA
SVS BANANA SPLIT DXPF
SVS SONG BIRD XPfZ

WS BEEF KING W107
CDI MS HIGH ROLLER 39W
SRS RIGHT-ON 22R
SVS ROSANNE RKC2
ELLINGSON LEGACY M229
SVS LADY BUG WNBA
SVS HUMDINGER TR21
SVS PERFECTION PFZ2

Adj. BW	Adj. WW	CE	BW	WW	YW	ADG	MCE	Milk	MWW	EPDs %
82	622	11.3	1.6	65.0	95.0	0.19	6.6	23.7	56.2	
		45					35			
Stay	Doc	CW	YG	Marb	BF	REA	Shr	API	TI	EPDs %
16.4	12.6	20.5	-0.45	-0.05	-0.105	0.72	-0.34	115.7	65.7	
		35		35	15					

This Homo Black, Homo Polled bull, sired by SVS EVERCLEAR FAR2, has balanced traits and is as quiet as a kitten. His dam is a gorgeous-uddered female sired by SVS SHENANDOAH ZWNA, who's known for his phenomenal females. SVS HOME BREW JDXF should do the same. He moves freely in a moderate frame, possesses ample length, and is solid black. Here's a good one in the making!

AGE-ADVANTAGE BULLS

46

SVS ALL PUMPED UP JZN9

PB SM
SCURRED
HOMO
BLACK
Tattoo
JZN9
ASA#
3913202
DOB
4/4/21

SRS RIGHT-ON 22R
SVS REVEILLE BU09
SVS SNICKERDOODLE US09
GWS EBONYS TRADEMARK 6N
SVS TWIGGY ZN9C
SVS KELBYS FIRE N19C

SRS J914 PREFERRED BEEF
SRS G720 GILLIAN
SVS KEEP DREAMIN RNB1
SVS SANDY S019
WLE POWER STROKE
NJC EBONY ANTOINETTE
HART BACK FIRE J283
COTT KELBY 019K

Adj. BW	Adj. WW	CE	BW	WW	YW	ADG	MCE	Milk	MWW	EPDs %
83	804	10.0	4.0	84.4	116.9	0.20	6.1	25.6	67.7	
				25			45	35	25	
Stay	Doc	CW	YG	Marb	BF	REA	Shr	API	TI	EPDs %
16.1	13.9	26.0	-0.44	-0.06	-0.105	0.78	-0.25	115.0	73.8	
	20		40		15					

SVS ALL PUMPED UP JZN9 is Homo Black and Hetero Polled. He is a son of our proven SVS REVEILLE BU09 herdsire, a SVS SNICKERDOODLE US09 son from the COTT KELBY 019K cow family. This black, star-faced bull is moderate and complete. Loaded with potential stemming from generations of rock solid genetics, use him on mature purebred or commercial cows to produce calves that pound the scales on sale day!



47

SVS WARRIOR JXP7

PB SM
HOMO
POLLED
HETERO
BLACK
Tattoo
JXP7
ASA#
3913186
DOB
4/6/21

HOOK'S YELLOWSTONE 97Y
SVS BUSTIN' LOOSE EYR7
SVS SHINING STAR YRL7
SVS KEEP DREAMIN RNB1
SVS BUTTERNUT XPD7
SVS PAULETTE PDY7

HOOKS TAURUS 24T
HOOKS SHEYENNE 77S
SRS RIGHT-ON 22R
SVS ROSEBUD RLB7
CNS DREAM ON L186
SVS DOLLS JOKER NB10
BF K065 TALLADEGA
SVS LEADERS RED ROSE

Adj. BW	Adj. WW	CE	BW	WW	YW	ADG	MCE	Milk	MWW	EPDs %
80	780	10.4	2.8	86.7	125.4	0.24	6.5	27.9	71.2	
				20	30		35	20	15	
Stay	Doc	CW	YG	Marb	BF	REA	Shr	API	TI	EPDs %
17.9	14.0	36.1	-0.42	0.07	-0.098	0.88	-0.38	130.2	80.4	
40	20	25		30			30		40	

Here's a crowd pleaser! SVS WARRIOR JXP7 is an outstanding Hetero Black, Homo Polled, black baldy sire. His genetics are rock solid with the SVS ROSEBUD RLB7 donor cow family on the top side and our LEADERS RED ROSE donor on the bottom. This beautiful-profiling sire combines volume, muscle, a strong top and loads of style with performance and maternal ability. Wanna make fancy red baldies? Wanna make outstanding black baldies? Look no further!



48

SVS BACKLASH JET8

PB SM
HOMO
POLLED
HETERO
BLACK
Tattoo
JET8
ASA#
3913234
DOB
4/7/21

ELLINGSON DOMINATOR W905
SVS STOCKADE DZS9
SVS COW BELLE ZS09
SVS SHARP SHOOTER XPL7
SVS LIL RED WAGON ETM8
SVS TWILIGHT TMK8

ELLINGSON LEGACY M229
ELLINGSON HUMMER T713
KAPPES TRAILBLAZER S516
SVS SANDY S019
SVS KEEP DREAMIN RNB1
SVS PANSY PLF7
KENCO/MF POWERLINE 204L
SVS JOKERS DARLIN MKD8

Adj. BW	Adj. WW	CE	BW	WW	YW	ADG	MCE	Milk	MWW	EPDs %
86	831	6.9	3.9	89.6	132.7	0.27	5.2	27.3	72.1	
				15	20	30		25	15	
Stay	Doc	CW	YG	Marb	BF	REA	Shr	API	TI	EPDs %
18.7	2.6	32.2	-0.51	-0.24	-0.105	1.05	-0.29	110.7	73.2	
30		40	15		15	20				

SVS BACKLASH JET8 is a Hetero Black, Homo Polled, high growth, solid black SVS STOCKADE DZS9 son for use on mature cows. Backed by the SVS JOKER'S DARLIN' MKD8 cow family genetics on the bottom and SVS SANDY S019 on the top of the pedigree, "performance" is this bull's middle name. He travels with ease and has impressive volume and muscle. He should sire tremendous F1 females on Angus cows and will definitely have friends on sale day!



SVS STOCKADE DZS9 - SIRE

AGE-ADVANTAGE BULLS



LOT 49

49

SVS TWISTER JFAJ

PB SM
HOMO
POLLED
HOMO
BLACK
Tattoo
JFAJ
ASA#
3913155
DOB
4/9/21

LRS ELEVATE 213B
SVS COMMON SENSE GASH
SVS VIRGINIA BELLE ASHA
SVS SUNDANCE CWSA
SVS STARRY NIGHT FARJ
SVS BACHLORETTE AR1J

HOOK'S YELLOWSTONE 97Y
LRS MS DUAL FOCUS 213Z
MR NLC UPGRADE U8676
SVS SCARLETT SH2A
WS PRIME BEEF Z8
SVS BROWN SUGAR WS8A
SRS RIGHT-ON 22R
SVS RENEE R12J

Adj. BW	Adj. WW	CE	BW	WW	YW	ADG	MCE	Milk	MWW	EPDs % EPDs %
83	745	10.3	1.9	80.6	121.3	0.25	4.8	26.7	67.0	
				40	40	45		25	30	
Stay	Doc	CW	YG	Marb	BF	REA	Shr	API	TI	
15.0	9.4	31.7	-0.47	0.07	-0.096	1.02	-0.29	125.1	78.4	
		40	25		30	25				

Wake up here! Look at the stout, correct phenotype of SVS TWISTER JFAJ! He's Homo Black and Homo Polled, and is out of an exceptional SVS SUNDANCE CWSA first calf heifer and our SVS COMMON SENSE GASH sire. There's performance, there's depth, there's style, there's heavy muscle. Here's a solid black bull that looks like a bull!



LOT 50

50

SVS SPIT SHINED JBYC

PB SM
HOMO
POLLED
HETERO
BLACK
Tattoo
JBYC
ASA#
3913227
DOB
4/12/21

CCR COWBOY CUT 5048Z
SVS HIGH FLYER FASB
SVS VIRGINIA BELLE ASHA
SVS SHARP SHOOTER XPL7
SVS REBA BYNC
SVS EVERGREEN YNBC

TRIPLE C SINGLETARY S3H
CCR MS 4045 TIME 7322T
MR NLC UPGRADE U8676
SVS SCARLETT SH2A
SVS KEEP DREAMIN RNB1
SVS PANSY PLF7
SVS SNAP SHOT UN33
SVS DOLLS POWER HOUSE N

Adj. BW	Adj. WW	CE	BW	WW	YW	ADG	MCE	Milk	MWW	EPDs % EPDs %
77	833	12.0	2.8	88.7	128.8	0.25	7.8	27.7	72.0	
		35		15	25	45	20	20	15	
Stay	Doc	CW	YG	Marb	BF	REA	Shr	API	TI	
19.1	15.1	33.3	-0.48	0.02	-0.100	1.03	-0.38	133.2	81.0	
25	10	35	20		30	20	30	45	40	

This balanced trait bull from the PVF-BF BG10 DOLL BE22 cow family is as impressive on paper as he is in the pasture. SVS SPIT SHINED JBYC is Hetero Black, Homo Polled and blaze-faced. He's powerful and yet smooth, and has depth in an outstanding phenotype. Bulls like SVS SPIT SHINED JBYC don't come along every day. Here's one to watch!

A supplement sheet will be available sale day to include updated calving information, genetic coat color and horn/poll test results, and for bulls actual weights, scrotal circumferences, hip heights and yearling weights.

51

SVS FISH TAILIN' JZXD

PB SM
HOMO
POLLED
HOMO
BLACK
Tattoo
JZXD
ASA#
3913162
DOB
4/14/21

SRS RIGHT-ON 22R
SVS REVEILLE BU09
SVS SNICKERDOODLE US09
TRIPLE C SINGLETARY S3H
SVS FREE SPIRIT ZXRD
SVS SAPPHIRE XRLD

SRS J914 PREFERRED BEEF
SRS G720 GILLIAN
SVS KEEP DREAMIN RNB1
SVS SANDY S019
HOOKS SHEAR FORCE 38K
LUCAS JOSIE 19K
SVS GOLD FINGER SLF2
SVS ROXIE RLD3

Adj. BW	Adj. WW	CE	BW	WW	YW	ADG	MCE	Milk	MWW	EPDs % EPDs %
79	563	10.5	2.0	65.5	95.8	0.19	7.4	23.8	56.5	
							25			
Stay	Doc	CW	YG	Marb	BF	REA	Shr	API	TI	
17.9	15.4	14.4	-0.48	0.07	-0.109	0.71	-0.37	124.1	68.7	
40	10		20		15		35			

Here's a Homo Black, Homo Polled, moderate-framed, small-headed, solid black SVS REVEILLE BU09 son. He should reduce frame, is deep and long, and has balanced traits to boot. With SVS GOLD FINGER SLF2 on the bottom side of his pedigree, SVS FISH TAILIN' JZXD should sire beautiful replacement females. A touch of pinkeye as a calf left a small spot in one eye but he is quiet and totally functional. Take him home and see what he can do for you!

AGE-ADVANTAGE BULLS

S2

SVS BLOW-OUT JCXA

PB SM

POLLED

BLACK

Tattoo

JCXA

ASA#

3913209

DOB

5/9/21

CCR COWBOY CUT 5048Z

SVS HIGH FLYER FASB

SVS VIRGINIA BELLE ASHA

SAS DEEP ROCK 12U

SVS FASCINATION CX9A

SVS LILY XS19

TRIPLE C SINGLETARY S3H

CCR MS 4045 TIME 7322T

MR NLC UPGRADE U8676

SVS SCARLETT SH2A

JF GENERAL 516R

SAS 787M

SVS HUMDINGER TR21

SVS SARAH S19K

Adj. BW	Adj. WW	CE	BW	WW	YW	ADG	MCE	Milk	MWW
78	601	10.8	2.6	78.5	111.0	0.20	6.1	22.6	61.8
							45		
Stay	Doc	CW	YG	Marb	BF	REA	Shr	API	TI
19.5	15.9	23.0	-0.52	0.09	-0.109	0.94	-0.35	132.6	76.2
20	10		10		15	35	45		

EPDs % EPDs %

SVS BLOW-OUT JCXA, from the SVS LILY XS19 cow family and sired by SVS HIGH FLYER FASB, is powerful, thick and deep in a moderate package. This solid black bull possesses growth as well as maternal ability. Being versatile, he can be used to produce super replacement females as well as calves that grow like weeds. Here's a bull for your neighbors to talk about!



LOT 52

S3

SVS SUMMIT JEAH

PB SM

HOMO

POLLED

HOMO

BLACK

Tattoo

JEAH

ASA#

3913228

DOB

5/26/21

SRS RIGHT-ON 22R

SVS REVEILLE BU09

SVS SNICKERDODDLE US09

CCR COWBOY CUT 5048Z

SVS SMOKIN' HOT EAHA

SVS VIRGINIA BELLE ASHA

SRS J914 PREFERRED BEEF

SRS G720 GILLIAN

SVS KEEP DREAMIN RNB1

SVS SANDY S019

TRIPLE C SINGLETARY S3H

CCR MS 4045 TIME 7322T

MR NLC UPGRADE U8676

SVS SCARLETT SH2A

Adj. BW	Adj. WW	CE	BW	WW	YW	ADG	MCE	Milk	MWW
76	615	11.6	1.9	70.1	101.6	0.20	7.8	24.2	59.2
		40					20	45	
Stay	Doc	CW	YG	Marb	BF	REA	Shr	API	TI
18.6	15.9	17.9	-0.44	0.06	-0.095	0.73	-0.38	128.4	71.4
30	10		40		30		30		

EPDs % EPDs %

Here's another SVS REVEILLE BU09 son with tons of potential. He's moderate, smooth, clean-lined and pleasing to the eye. SVS SUMMIT JEAH is a Homo Black, Homo Polled, blaze-face bull that puts it all together. His dam, SVS SMOKIN' HOT EAHA, a daughter of our prolific donor, SVS VIRGINIA BELLE ASHA, is entering our donor program. Producing offspring like SVS SUMMIT JEAH there's no wonder why! With solid EPDs and an amazing phenotype, here's one to take home for sure!

S4

SVS TOP NOTCH JEY9

PB SM

HOMO

POLLED

HETERO

BLACK

Tattoo

JEY9

ASA#

3913146

DOB

6/21/21

WS ALL-AROUND Z35

SVS EVERCLEAR FAR2

SVS SPELLBOUND ARK2

WS ALL-AROUND Z35

SVS CUT A RUG EY09

SVS LEATHER N LACE YS09

WS BEEF KING W107

CDI MS HIGH ROLLER 39W

SRS RIGHT-ON 22R

SVS ROSANNE RKC2

WS BEEF KING W107

CDI MS HIGH ROLLER 39W

SVS GOLD FINGER SLF2

SVS SANDY S019

Adj. BW	Adj. WW	CE	BW	WW	YW	ADG	MCE	Milk	MWW
76	693	11.8	1.8	78.7	116.5	0.24	7.7	20.6	59.9
		40					20		
Stay	Doc	CW	YG	Marb	BF	REA	Shr	API	TI
17.7	12.5	26.1	-0.38	0.11	-0.093	0.66	-0.32	133.0	77.4
40	40				30			45	

EPDs % EPDs %

Backed by SVS SANDY S019 cow family genetics on the dam's side, SVS TOP NOTCH JEY9, the youngest long yearling in the offering, should be top notch! With balanced EPDs, this Hetero Black, Homo Polled SVS EVERCLEAR FAR2 son is solid black, long-sided and travels with ease. If you need to add just a bit of frame, he'll do it. It sounds like a broken record, but these SANDY cow family genetics are outstanding. See what he'll do for you!



SVS HIGH FLYER FASB - SIRE OF LOTS 52 & 55

SS

SVS THUNDERHEAD JZUJ

PB SM

HETERO

POLLED

HOMO

BLACK

Tattoo

JZUJ

ASA#

3913154

DOB

5/27/21

CCR COWBOY CUT 5048Z

SVS HIGH FLYER FASB

SVS VIRGINIA BELLE ASHA

SVS RAM ROD UPF7

SVS HARMONY ZU1J

SVS IMPRESSION U12J

TRIPLE C SINGLETARY S3H

CCR MS 4045 TIME 7322T

MR NLC UPGRADE U8676

SVS SCARLETT SH2A

SAND RANCH HAND

SVS RUBY BLACK PF7A

SVS GUTS & BUTT RM10

SCC LETS TANGO 124J

Adj. BW	Adj. WW	CE	BW	WW	YW	ADG	MCE	Milk	MWW
74	640	10.5	2.3	77.1	112.8	0.22	7.1	26.4	64.9
							25	30	40
Stay	Doc	CW	YG	Marb	BF	REA	Shr	API	TI
17.7	14.0	30.9	-0.47	0.12	-0.095	1.00	-0.31	130.7	76.8
40	20	45	25		30	25			

EPDs % EPDs %

SVS THUNDERHEAD JZUJ is a Homo Black, Hetero Polled sire from one of our oldest cow families, SCC LETS TANGO. These genetics perform year after year and this bull is no exception. He's a compact, frame reducing, star-faced bull with balanced EPDs and a docile disposition. And being sired by SVS HIGH FLYER FASB, our fancy CCR COWBOY CUT 5048Z herdsire, should add flash and flair to THUNDERHEAD's calves!

YEARLING BULLS



LOT 56

SVS HUMDINGER TR21 - MATERNAL GRANDSIRE

56

SVS CROSSFIRE JXJ5

PB SM
SCURRED
BLACK
Tattoo
JXJ5
ASA#
4074210
DOB
9/26/21

HOOK'S BEACON 56B
KBHR HIGH ROAD E283
WS MISS SUGAR C4
SVS HUMDINGER TR21
SVS JASMINE XJ35
SVS CARDINAL

HOOKS SHEAR FORCE 38K
HOOKS ZAFIRAH 41Z
CLRS GRADE-A 875 A
WS ANISE A71
CNS DREAM ON L186
SVS REBEKAH RM21
LLL BLK X FILES
SVS LADY FLECK

Adj. BW	Adj. WW	Adj. YW	CE	BW	WW	YW	ADG	MCE	Milk	MWW	EPDs %
72	779	1155	13.9	0.8	84.7	126.6	0.26	8.4	31.7	73.9	
			15	35	25	30	40	10	10	10	
Stay	Doc	CW	YG	Marb	BF	REA	Shr	API	TI	EPDs %	
18.8	11.9	40.4	-0.47	0.19	-0.093	1.13	-0.34	147.3	86.1		
30	45	15	25	40	30	10		20	20		



LOT 57

TJ GOLD 274G - SIRE

57

SVS CITATION JAXF

PB SM
POLLED
BLACK
Tattoo
JAXF
ASA#
4074215
DOB
9/27/21

HOOK'S EAGLE 6E
TJ GOLD 274G
TJ 12C
SVS KEEP DREAMIN RNB1
SVS MISS KITTY AXF7
SVS GREY MIST XFW7

HOOK'S BLACK HAWK 50B
HOOK'S CRYSTAL 1C
CCR SANTA FE 9349Z
TJ MS 38W
CNS DREAM ON L186
SVS DOLLS JOKER NB10
SVS GUTS & BUTT RM10
SVS RED PASSION

Adj. BW	Adj. WW	Adj. YW	CE	BW	WW	YW	ADG	MCE	Milk	MWW	EPDs %
80	727	1084	11.7	0.4	79.3	119.4	0.25	6.9	28.1	67.7	
			40	30	45	45	45	30	20	25	
Stay	Doc	CW	YG	Marb	BF	REA	Shr	API	TI		EPDs %
17.0	11.5	28.8	-0.40	0.22	-0.077	0.88	-0.41	140.6	83.0		
				30			15	30	30		

Here's another TJ GOLD 274G son with outstanding EPDs and phenotype. He's one of the highest API bulls in the offering, excelling in calving ease, performance and maternal traits. SVS CITATION JAXF is masculine, and exhibits width and depth with stretch. His dam is a beautiful SVS KEEP DREAMIN' RNB1 daughter with a gorgeous udder. This versatile, solid black bull should sire replacements of exceptional quality as well as calves that grow like weeds!

YEARLING BULLS

58

SVS COWBOY BOOGIE JB NB

PB SM

POLLED

BLACK

Tattoo

JB NB

ASA#

3960951

DOB

9/27/21

TRIPLE C SINGLETARY S3H

CCR COWBOY CUT 5048Z

CCR MS 4045 TIME 7322T

SVS KEEP DREAMIN' RNB1

SVS GUM DROP BN9B

SVS KELBYS BLAZE N19B

HOOKS SHEAR FORCE 38K

LUCAS JOSIE 19K

HTP SVF IN DEW TIME

CCR MS PRETTY 4045P

CNS DREAM ON L186

SVS DOLLS JOKER NB10

HART BACK FIRE J283

COTT KELBY 019K

Adj. BW	Adj. WW	Adj. YW	CE	BW	WW	YW	ADG	MCE	Milk	MWW	EPDs %
82	806	1208	9.7	3.1	88.8	123.2	0.22	7.0	23.1	67.5	
					15	35		30		25	
Stay	Doc	CW	YG	Marb	BF	REA	Shr	API	TI		EPDs %
21.0	13.9	26.3	-0.42	0.12	-0.083	0.87	-0.44	137.7	81.6		
10	20						10	40	35		

SVS COWBOY BOOGIE JB NB is a solid black, very correct, CCR COWBOY CUT 5048Z son out of our exceptional COTT KELBY 019K cow family. Here's a versatile bull designed to sire fast-growing calves and beautiful replacement females, just like his dam, an amazingly gorgeous SVS KEEP DREAMIN' RNB1 daughter. This bull is strong in his top, moderate in frame, has a nice profile and an excellent disposition. CCR COWBOY CUT 5048Z sons are hard to find. Don't miss this opportunity to own one for yourself!



LISA AND BULL CUSTOMER

59

SVS COWBOY WAY JA9D

PB SM

POLLED

BLACK

Tattoo

JA9D

ASA#

3960959

DOB

9/27/21

TRIPLE C SINGLETARY S3H

CCR COWBOY CUT 5048Z

CCR MS 4045 TIME 7322T

SVS KEEP DREAMIN' RNB1

SVS TEA ROSE A9BD

SVS KELBYS BLAZE N19B

HOOKS SHEAR FORCE 38K

LUCAS JOSIE 19K

HTP SVF IN DEW TIME

CCR MS PRETTY 4045P

CNS DREAM ON L186

SVS DOLLS JOKER NB10

HART BACK FIRE J283

COTT KELBY 019K

Adj. BW	Adj. WW	Adj. YW	CE	BW	WW	YW	ADG	MCE	Milk	MWW	EPDs % EPDs %
75	681	969	11.1	2.0	77.6	107.3	0.19	7.9	22.2	61.0	
								15			
Stay	Doc	CW	YG	Marb	BF	REA	Shr	API	TI		
20.1	14.7	19.8	-0.41	0.12	-0.083	0.78	-0.44	135.1	76.3		
15	15						10	45			

This CCR COWBOY CUT 5048Z son, SVS COWBOY WAY JA9D, is solid black, has a bit of stretch, a strong top, and travels with ease. He's backed by the COTT KELBY 019K cow family and his dam is an exceptional SVS KEEP DREAMIN' RNB1 daughter. With plenty of growth and maternal ability built in, here's a super good bull. And by the way, couldn't we use a little more Cowboy Ways these days???



CCR COWBOY CUT 5048Z - SIRE OF LOT 59

60

SVS CHEYENNE JDA7

PB SM

POLLED

BLACK

Tattoo

JDA7

ASA#

3960936

DOB

9/28/21

HOOK'S BEACON 56B

KBHR HIGH ROAD E283

WS MISS SUGAR C4

SVS REVELLE BU09

SVS DREAMIN' TREE DAT7

SVS FORGET-ME-NOT ATN7

HOOKS SHEAR FORCE 38K

HOOKS ZAFIRAH 41Z

CLRS GRADE-A 875 A

WS ANISE A71

SRS RIGHT-ON 22R

SVS SNICKERDOODLE US09

MR NLC UPGRADE U8676

SVS THERESA TNF7

Adj. BW	Adj. WW	Adj. YW	CE	BW	WW	YW	ADG	MCE	Milk	MWW	EPDs %
80	821	1128	12.4	1.5	93.7	141.7	0.30	6.5	32.1	78.9	
			30		10	10	15	35	5	3	
Stay	Doc	CW	YG	Marb	BF	REA	Shr	API	TI		EPDs %
18.5	15.1	41.9	-0.46	0.25	-0.085	1.19	-0.34	150.5	92.1		
30	10	15	30	25		5		20	10		

SVS CHEYENNE JDA7 is a good looking papa with outstanding EPDs across the board. This KBHR HIGH ROAD E283 son, going back to SVS SNICKERDOODLE US09 on the dam's side, is stout. This solid black, performance bull is complete and has one of the highest APIs of any bull in this offering. His dam is a beautiful-uddered, young female. KBHR HIGH ROAD E283 is siring high-selling purebred cattle that are topping sales run by people serious about the beef business. High Road is currently the most popular son of the great Sugar cow. SVS CHEYENNE JDA7 can take your herd to the next level!



LOT 60



KBHR HIGH ROAD E283 - SIRE

YEARLING BULLS



LOT 61



MILL BAR HICKOK 7242 - SIRE

61

SVS YELLOW JACKET JZS8

1/2 SM
1/2 AN
POLLED
BLACK
Tattoo
JZS8
ASA#
3960967
DOB
9/30/21

CONNELLY CONSENSUS 7229
MILL BAR HICKOK 7242
MILL BAR BEMINDFUL MAID 6304
SVS RELOAD WPF7
SVS CHANTILLY LACE ZS8C
SVS SAMANTHA S87C

CONNELLY CONSENSUS
BLUE LILLY OF CONANGA 16
S A V FINAL ANSWER 0035
MILL BAR LADY DI 3400
SRS RIGHT-ON 22R
SVS RUBY BLACK PF7A
PVF-BF BF26 BLACK JOKER
COTT RED SILK 887H

Adj. BW	Adj. WW	Adj. YW	CE	BW	WW	YW	ADG	MCE	Milk	MWW	EPDs	%
74	821	1162	12.4	1.1	83.9	125.7	0.26	4.4	26.4	68.3		
					25	35			25	20		
Stay	Doc	CW	YG	Marb	BF	REA	Shr	API	TI		EPDs	%
18.2	14.1	37.4	-0.22	0.27	-0.039	0.76	-0.21	135.5	80.9			
20	25	30				35		45	40			

This solid black bull, sired by MILL BAR HICKOK 7242 is the only SimAngus yearling bull in this offering. His dam stems from the COTT RED SILK 887H cow family that's still producing exceptional offspring today. This pasture standout is loaded with eye-appeal, length, volume, and a small head. The EPDs of SVS YELLOW JACKET JZS8 are solid. Calves should arrive with ease and grow, grow, grow!

62

SVS BLACKOUT JBR8

PB SM
POLLED
BLACK
Tattoo
JBR8
ASA#
4074191
DOB
10/1/21

HOOK'S YELLOWSTONE 97Y
KOCH BIG TIMBER 685D
KOCH MS HOOKS BOY
SRS RIGHT-ON 22R
SVS INDIAN MOON BR8B
SVS RHINESTONE R87B

HOOKS TAURUS 24T
HOOKS SHEYENNE 77S
GW LUCKY BOY 252U
HOOK'S YORK 51Y
SRS J914 PREFERRED BEEF
SRS G720 GILLIAN
PVF-BF BF26 BLACK JOKER
COTT RED SILK 887H

Adj. BW	Adj. WW	Adj. YW	CE	BW	WW	YW	ADG	MCE	Milk	MWW	EPDs	%
79	679	993	10.9	-0.3	69.6	105.2	0.22	4.9	27.5	62.3		
					20				25			
Stay	Doc	CW	YG	Marb	BF	REA	Shr	API	TI		EPDs	%
19.0	12.5	24.5	-0.32	0.13	-0.069	0.66	-0.39	135.5	75.3			
25	40						25	40				

This low birth weight KOCH BIG TIMBER 685D son is bound to be a crowd favorite! With a small head, this solid black, frame moderator is thick, deep, wide and correct with plenty of performance. With SRS RIGHT-ON 22R and COTT SILK 887H genetics on the dam's side, expect nothing but exceptional offspring from SVS BLACKOUT JBR8!

63

SVS REVELATION JAT5

PB SM
POLLED
BLACK
Tattoo
JAT5
ASA#
3960931
DOB
10/2/21

HOOK'S EAGLE 6E
TJ GOLD 274G
TJ 12C
SVS RELOAD WPF7
SVS JOSEPHINE AT35
SVS TIFFANY TJ35

HOOK'S BLACK HAWK 50B
HOOK'S CRYSTAL 1C
CCR SANTA FE 9349Z
TJ MS 38W
SRS RIGHT-ON 22R
SVS RUBY BLACK PF7A
BF K065 TALLADEGA
SVS CARDINAL

Adj. BW	Adj. WW	Adj. YW	CE	BW	WW	YW	ADG	MCE	Milk	MWW	EPDs	%
81	815	1237	11.5	0.6	84.4	130.5	0.29	6.0	29.8	71.9		
					45	30	25	20	45	15		
Stay	Doc	CW	YG	Marb	BF	REA	Shr	API	TI		EPDs	%
18.0	11.8	35.8	-0.38	0.25	-0.079	0.90	-0.38	146.7	87.1			
40	45	25		25		45	30	25	20			

SVS REVELATION JAT5 is backed by tremendous genetics on both sides of his pedigree...TJ GOLD 274G as his sire and our SVS Ruby Black cow family of the dam. He's a solid black, strong-topped, high capacity sire with impressive length and a touch of frame. Add to that his outstanding EPDs, and this calving ease sire with tremendous growth and maternal ability is one to write home about! TJ GOLD 274G is the new calving ease spread bull that people love. He got hurt and semen was in high demand. There won't be as many Gold's in the future so make sure to add him to your herd. A TJ Gold sired open heifer topped the recent MO State Sale. She was fancy too and will end up being shown then added to the donor pen in her retirement from the ring.



LOT 63

YEARLING BULLS

64

SVS FULL MOON RISING JX10

PB SM

WS PROCLAMATION E202

CCR COWBOY CUT 5048Z

POLLED

LBR GENESIS G69

WS MISS SUGAR C4

BLACK

LBR DIANA D69

HOOK'S XAVIER 14X

Tattoo

SVS GOLD FINGER SLF2

LBR DOUBLE TAKE X14

JX10

SVS SNICKERS XN10

SS GOLDMINE L42

ASA#

SVS DOLLS JOKER NB10

SVS LUCINDA

3960971

PVF-BF BF26 BLACK JOKER

DOB

10/5/21

Adj. BW	Adj. WW	Adj. YW	CE	BW	WW	YW	ADG	MCE	Milk	MWW	EPDs %
82	707	1077	8.1	2.3	87.4	129.9	0.27	5.5	26.0	69.7	
					20	25	30		30	20	
Stay	Doc	CW	YG	Marb	BF	REA	Shr	API	TI	EPDs %	
18.6	13.6	41.3	-0.36	0.41	-0.075	0.94	-0.36	148.9	89.4		
30	25	15		10		35	40	20	15		

Here's a super good numbered LBR GENESIS G69 son and the only one being offered. He's a unique bull with a unique pedigree going back to our PVF-BF BG10 DOLL BE22 cow family, which needs no introduction. SVS FULL MOON RISING JX10 is free-moving, small-headed, and smooth-patterned with impressive length and style, and one of the best APIs in this offering. Here's one to take home!



LOT 64

LBR GENESIS G69 - SIRE

65

SVS FLAMIN' HOT JDJ2

PB SM

WS ALL-AROUND Z35

WS BEEF KING W107

POLLED

WS ALL ABOARD B80

CDI MS HIGH ROLLER 39W

RED

WS LITTLE SISTER W37

HOOKS SHEAR FORCE 38K

Tattoo

SVS SHENANDOAH ZWNA

DCR MS RIBEYE N72

JDJ2

SVS RIPPLIN' WATER DJJ2

ELLINGSON LEGACY M229

ASA#

SVS RED SUNSET

SVS LADY BUG WNBA

3960990

BOZ REDCAT D162

DOB

10/5/21

Adj. BW	Adj. WW	Adj. YW	CE	BW	WW	YW	ADG	MCE	Milk	MWW	EPDs %
74	708	1126	12.4	-0.2	75.3	115.6	0.25	7.6	24.0	61.6	
			30	20			45	20	45		
Stay	Doc	CW	YG	Marb	BF	REA	Shr	API	TI	EPDs %	
8.4	15.7	33.0	-0.52	0.14	-0.110	1.07	-0.26	120.6	79.8		
	10	35	10		15	15			45		

Red baldies are super hard to find and one as fancy as SVS FLAMIN' HOT JDJ2 is rare. This smooth-made, nice-profiling, strong-topped, calving ease sire with balanced EPDs is bound to sire exceptional replacement females. His dam is a gorgeous SVS SHENANDOAH ZWNA daughter and his maternal granddam, SVS RED SUNSET, was an outstanding donor in our program. Being sired by WS ALL ABOARD B80 makes him even more special. Red baldies sell like hot cakes. See what he can do for you!



LOT 65

WS ALL ABOARD B80 - SIRE

66

SVS WRANGLER JANB

PB SM

HOOKS TAURUS 24T

HOOKS SHEAR FORCE 38K

POLLED

HOOK'S YELLOWSTONE 97Y

HOOKS PEACHES 48-P

BLACK

HOOKS SHEYENNE 77S

SRS J914 PREFERRED BEEF

Tattoo

SVS STINGER XSPZ

TRIPLE C TEARS P02C

JANB

SVS ENCHANTRESS AN9B

SRS RIGHT-ON 22R

ASA#

SVS KELBYS BLAZE N19B

SVS SABRINA SPKZ

3960935

HART BACK FIRE J283

DOB

10/10/21

Adj. BW	Adj. WW	Adj. YW	CE	BW	WW	YW	ADG	MCE	Milk	MWW	EPDs %
83	767	1119	8.3	2.4	83.3	120.8	0.23	3.8	27.0	68.6	
					30	40			25	25	
Stay	Doc	CW	YG	Marb	BF	REA	Shr	API	TI	EPDs %	
16.6	12.0	34.4	-0.46	0.03	-0.104	0.94	-0.34	122.3	77.6		
	45	30	30		15	35					

SVS WRANGLER JANB is a bull packed with performance in a moderate package. This frame reducer is extremely correct in his structure, is strong-topped and moves freely. Combining the genetics of his dam's side, COTT KELBY 019K with HOOK'S YELLOWSTONE 97Y, resulted in a solid black bull designed to sire calves to crunch the scales on sale day!

67

SVS FLYIN' HIGH JYUD

PB SM

WS ALL-AROUND Z35

WS BEEF KING W107

POLLED

SVS EVERCLEAR FAR2

CDI MS HIGH ROLLER 39W

BLACK

SVS SPELLBOUND ARK2

SRS RIGHT-ON 22R

Tattoo

SRS RIGHT-ON 22R

SRS J914 PREFERRED BEEF

JYUD

SVS SUN DOWN YUMD

SRS G720 GILLIAN

ASA#

SVS HONEY COMB UMBD

BLACK IRISH KANSAS

4074219

SVS WHAT A DOLL MB10

DOB

10/11/21

Adj. BW	Adj. WW	Adj. YW	CE	BW	WW	YW	ADG	MCE	Milk	MWW	EPDs %
63	759	1097	14.3	2.6	76.4	116.5	0.25	9.3	25.1	63.2	
			15				45	5	40	45	
Stay	Doc	CW	YG	Marb	BF	REA	Shr	API	TI	EPDs %	
17.9	13.7	25.7	-0.41	0.03	-0.096	0.73	-0.35	130.8	74.2		
40	25				30		45				

SVS FLYIN' HIGH JYUD is a solid black SVS EVERCLEAR FAR2 son and is out of our PVF-BF BG10 DOLL BE22 cow family on the bottom side. He possesses balanced traits in a high capacity, deep-sided, strong-topped, moderate package. His dam is a super feminine SRS RIGHT-ON 22R daughter. These genetics are definitely a winning combination!

YEARLING BULLS



68

svs BLACK JACK JGZJ

PB SM

POLLED

BLACK

Tattoo

JGZJ

ASA#

3960952

DOB

10/14/21

HOOK'S YELLOWSTONE 97Y

KOCH BIG TIMBER 685D

KOCH MS HOOKS BOY

SVS MAVERICK CXPZ

SVS IMELDA GZUJ

SVS HARMONY ZU1J

HOOKS TAURUS 24T

HOOKS SHEYENNE 77S

GW LUCKY BOY 252U

HOOK'S YORK 51Y

SVS BELL RINGER ANL3

SVS SONG BIRD XPFZ

SVS RAM ROD UPF7

SVS IMPRESSION U12J

Adj. BW	Adj. WW	Adj. YW	CE	BW	WW	YW	ADG	MCE	Milk	MWW	EPDs % EPDs %
85	760	1213	10.8	-0.3	78.7	114.8	0.23	6.4	28.5	67.8	
				20				40	20	25	
Stay	Doc	CW	YG	Marb	BF	REA	Shr	API	TI		
17.6	10.0	33.3	-0.33	0.13	-0.069	0.80	-0.39	135.4	80.6		
45		35					25	40	40		

With big ears, a long neck and straight lines, this easy travelling, eye-appealing bull is as long as a freight train. SVS BLACK JACK JGZJ is a KOCH BIG TIMBER 685D son with loads of potential. This solid black, low birth weight bull offers growth and maternal ability and stems from a cow family that never fails, SCS LET'S TANGO. His first calf heifer dam hit a home run here and you can too!

69

svs RED DIRT ROAD JGW7

PB SM

POLLED

RED

Tattoo

JGW7

ASA#

3960945

DOB

10/14/21

CNS DREAM ON L186

GCF MR AMIGO

GCF MISS MT-ZEL

SVS HORNET'S NEST DZ13

SVS FRANCINE GWN7

SVS SNAP DRAGON WND7

NICHOLS LEGACY G151

CNS SHEEZA DREAM K107W

SAC MR MT 73G

ZEIS MISS FORTUNE J79

SVS MILESTONE ZSP7

SVS GREENER PASTURE ZR13

ANKONIAN RED CAESAR

SVS NATALIE NDW7

Adj. BW	Adj. WW	Adj. YW	CE	BW	WW	YW	ADG	MCE	Milk	MWW	EPDs % EPDs %
83	743	1213	8.5	2.7	83.8	116.1	0.20	3.8	17.3	59.1	
					30						
Stay	Doc	CW	YG	Marb	BF	REA	Shr	API	TI		
18.5	10.2	27.6	-0.51	-0.01	-0.105	1.02	-0.35	123.4	75.6		
30			15		15	25	45				

SVS RED DIRT ROAD JGW7 is one to write home about. Reds have always been my favorite and you can see why. He's solid red, moderate with high volume, a long stride, an outstanding profile and solid EPDs. GCF MR AMIGO definitely left his mark here. His first calf heifer dam also did a superb job, but being a granddaughter of our SVS SNAPDRAGON WND7 powerhouse donor, it's to be expected. GCF MR AMIGO won in Denver before going to stud. His impact has been felt across the country siring beautiful herd bulls and making wonderful females. These are proven red genetics. SVS RED DIRT ROAD JGW7 will be a standout in any pasture!



LOT 69

GCF MR AMIGO - SIRE

70

svs TALL IN THE SADDLE JGT8

PB SM

POLLED

BLACK

Tattoo

JGT8

ASA#

3960970

DOB

10/15/21

CCR COWBOY CUT 5048Z

TJ HIGH PLAINS 986E

TJ MS 38W

SVS SNIPER BM10

SVS TESSIE GTL8

SVS TRUDY TL8A

TRIPLE C SINGLETARY S3H

CCR MS 4045 TIME 7322T

DIKEMANS SURE BET

TJ 12L

SVS SHENANDOAH ZWNA

SVS WHAT A DOLL MB10

SVS POWERBALL PBIL

SVS LOLITA

Adj. BW	Adj. WW	Adj. YW	CE	BW	WW	YW	ADG	MCE	Milk	MWW	EPDs % EPDs %
80	652	1118	11.6	1.4	76.8	115.0	0.24	7.9	24.3	62.6	
				40				15	45		
Stay	Doc	CW	YG	Marb	BF	REA	Shr	API	TI		
17.0	12.1	29.6	-0.35	0.15	-0.072	0.80	-0.41	133.3	77.9		
45				45			15	45			

With balanced EPDs across the board, this solid black TJ HIGH PLAINS 986E son is stout. He's wide, he's thick, he's deep and very correct. His first calf heifer dam from the COTT RED SILK 887H cow family going back to SRS RIGHT-ON 22R, just earned a home in our herd. His pedigree is backed by time tested genetics that have excelled for many years in our program. Expect great things from SVS TALL IN THE SADDLE JGT8!



LOT 70

YEARLING BULLS

71

SVS ROUGH RIDER JFCW

PB SM

POLLED

BLACK

Tattoo

JFCW

ASA#

4074187

DOB

10/15/21

HOOKS TAURUS 24T

HOOK'S YELLOWSTONE 97Y

HOOKS SHEYENNE 77S

SVS SNIPER BM10

SVS IVY FCZW

SVS BLACK MAGIC CZW2

HOOKS SHEAR FORCE 38K

HOOKS PEACHES 48-P

SRS J914 PREFERRED BEEF

TRIPLE C TEARS P02C

SVS SHENANDOAH ZWNA

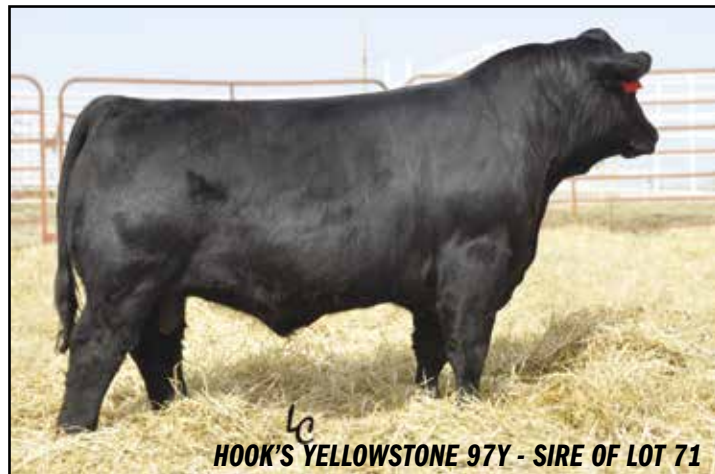
SVS WHAT A DOLL MB10

SVS FULL MOON ZSJ2

SVS NO DRAMA MAMA ZWT2

Adj. BW	Adj. WW	Adj. YW	CE	BW	WW	YW	ADG	MCE	Milk	MWW	EPDs %
81	647	1049	11.3	0.7	72.9	108.8	0.22	6.6	24.6	61.0	
			45	35				35	40		
Stay	Doc	CW	YG	Marb	BF	REA	Shr	API	TI	EPDs %	
13.9	12.6	31.2	-0.42	0.12	-0.094	0.88	-0.39	125.4	76.0		
	35	40			30		25				

This nice profiling, smaller frame HOOK'S YELLOWSTONE 97Y son is just right. SVS ROUGH RIDER JFCW is solid black, deep and correct and has an excellent disposition. This low birth weight bull has plenty of performance along with balanced EPDs. With PVF-BF BG10 DOLL BE22 and SRS RIGHT-ON 22R in the pedigree, here's one to take home!



HOOK'S YELLOWSTONE 97Y - SIRE OF LOT 71

72

SVS TEA PARTY JFX7

PB SM

POLLED

BLACK

Tattoo

JFX7

ASA#

4074204

DOB

10/17/21

CNS DREAM ON L186

GCF MR AMIGO

GCF MISS MT-ZEL

HOOK'S YELLOWSTONE 97Y

SVS STAR SHINE FXT7

SVS MOLASSES XTP7

NICHOLS LEGACY G151

CNS SHEEZA DREAM K107W

SAC MR MT 73G

ZEIS MISS FORTUNE J79

HOOKS TAURUS 24T

HOOKS SHEYENNE 77S

SVS HUMDINGER TR21

SVS TINA TP87

Adj. BW	Adj. WW	Adj. YW	CE	BW	WW	YW	ADG	MCE	Milk	MWW	EPDs %
84	717	1112	11.0	0.7	74.3	99.4	0.16	4.2	17.5	54.6	
				35							
Stay	Doc	CW	YG	Marb	BF	REA	Shr	API	TI	EPDs %	
17.5	11.2	23.4	-0.51	0.02	-0.103	0.96	-0.37	125.5	73.3		
45			15		15	35	35				

If bulls can be beautiful, here's a beauty!!! This blaze-faced bull combines the eye-appeal of his sire, GCF MR AMIGO, with the volume of his maternal great grandsire, SVS HUMDINGER TR21, arguably the best bull we've ever raised, and we've raised a lot! SVS TEA PARTY JFX7 is extremely stylish, travels with ease, is soft-made, and nice profiling. With calving ease built in and performance too, this individual has unlimited potential for siring gorgeous replacements, show calves or calves that flat out grow.



LOT 72

73

SVS KILLER BEE JEAB

PB SM

POLLED

BLACK

Tattoo

JEAB

ASA#

4074189

DOB

10/18/21

WS ALL-AROUND Z35

SVS EVERCLEAR FAR2

SVS SPELLBOUND ARK2

CCR COWBOY CUT 5048Z

SVS LOVE GLOW EANB

SVS ENCHANTRESS AN9B

WS BEEF KING W107

CDI MS HIGH ROLLER 39W

SRS RIGHT-ON 22R

SVS ROSANNE RKC2

TRIPLE C SINGLETARY S3H

CCR MS 4045 TIME 7322T

SVS STINGER XSPZ

SVS KELBYS BLAZE N19B

Adj. BW	Adj. WW	Adj. YW	CE	BW	WW	YW	ADG	MCE	Milk	MWW	EPDs %
83	770	1119	9.2	2.4	82.2	118.5	0.23	3.4	23.6	64.7	
					35	45				40	
Stay	Doc	CW	YG	Marb	BF	REA	Shr	API	TI	EPDs %	
17.9	13.3	27.6	-0.40	0.13	-0.088	0.78	-0.37	130.8	78.9		
40	30						35				

SVS KILLER BEE JEAB is the right kind. He's solid black, moderate in frame with a wide, strong top and lots of capacity. With impressive performance genetics, this SVS EVERCLEAR FAR2 son should pack growth into his offspring. On the bottom side of the pedigree is our proven COTT KELBY 019K donor cow family. These genetics never disappoint.



BO BO...THE BEST COW DOG EVER!

YEARLING BULLS



TJ HIGH PLAINS 986E - SIRE OF LOT 74

74

svs WHISKEY RIVER JDZ7

PB SM
POLLED
BLACK
Tattoo
JDZ7
ASA#
3960938
DOB
10/19/21

CCR COWBOY CUT 5048Z
TJ HIGH PLAINS 986E
TJ MS 38W
SVS SHENANDOAH ZWNA
SVS MOUNTAIN AIR DZP7
SVS SHIMMY N SHAKE ZPD7

TRIPLE C SINGLETARY S3H
CCR MS 4045 TIME 7322T
DIKEMANS SURE BET
TJ 12L
ELLINGSON LEGACY M229
SVS LADY BUG WNBA
SVS RELOAD WPF7
SVS PAULETTE PDY7

Adj. BW	Adj. WW	Adj. YW	CE	BW	WW	YW	ADG	MCE	Milk	MWW	EPDs % EPDs %
84	813	1165	11.1	2.0	81.6	122.9	0.26	6.9	28.8	69.6	
					35	35	40	30	15	20	
Stay	Doc	CW	YG	Marb	BF	REA	Shr	API	TI		
18.0	12.4	32.6	-0.37	0.11	-0.077	0.84	-0.40	133.8	79.7		
40	40	35					20	45	45		

This solid black TJ HIGH PLAINS 986E son is super good. He displays volume and width in an eye-catching, moderate frame. With high performance and maternal ability built into his EPDs and the beautiful femininity of his SVS SHENANDOAH ZWNA dam, SVS WHISKEY RIVER JDZ7 should excel in producing calves that bring top dollar in today's market and females to brag about!



LOT 75

75

svs BULL'S EYE JZUP

PB SM
POLLED
BLACK
Tattoo
JZUP
ASA#
4074221
DOB
10/27/21

CDI MAINLINE 265D
HOOK'S FRONTLINE 40F
HOOK'S CARINA 15C
SVS RELOAD WPF7
SVS DOE EYES ZUP7
SVS HONEY BEE UPL7

TJ MAIN EVENT 503B
HOOK'S BEYONCE 82B
HOOKS SHEAR FORCE 38K
HOOK'S YEARN 39Y
SRS RIGHT-ON 22R
SVS RUBY BLACK PF7A
DS BLACK ZINGER 141B
SVS PANSY PLF7

Adj. BW	Adj. WW	Adj. YW	CE	BW	WW	YW	ADG	MCE	Milk	MWW	EPDs % EPDs %
78	673	1117	10.5	1.1	70.4	110.8	0.25	6.1	29.9	65.1	
					40		45	45	10	35	
Stay	Doc	CW	YG	Marb	BF	REA	Shr	API	TI		
17.7	13.2	22.9	-0.41	0.28	-0.073	0.88	-0.30	140.0	78.8		
40	30			25				35			

SVS BULL'S EYE JZUP is the only HOOK'S FRONTLINE 40F son in the offering and he's a tremendous individual. This solid black bull is strong in type, has excellent muscle expression, is deep, thick and wide. This massive bull combines growth and maternal ability into a "real bull" package. With SRS RIGHT-ON 22R on the dam's side, you can't go wrong!



SVS TIMBERLINE FB09 - SIRE OF LOT 76

76

svs MIDNIGHT TRAIN JDZB

PB SM
POLLED
BLACK
Tattoo
JDZB
ASA#
4074190
DOB
11/3/21

KOCH BIG TIMBER 685D
SVS TIMBERLINE FB09
SVS DO-SI-DO BS09
SVS SELDOM SEEN AP8H
SVS CORAL BELL DZWB
SVS HIGH HEELS ZWMB

HOOK'S YELLOWSTONE 97Y
KOCH MS HOOKS BOY
MR NLC UPGRADE U8676
SVS SANDY S019
SVS SNAP SHOT UN33
SVS PATTY P87H
SVS RELOAD WPF7
SVS DELILAH WMBB

Adj. BW	Adj. WW	Adj. YW	CE	BW	WW	YW	ADG	MCE	Milk	MWW	EPDs % EPDs %
82	728	1132	10.2	1.3	78.7	119.0	0.25	6.1	26.5	65.9	
					45	45	45	45	30	35	
Stay	Doc	CW	YG	Marb	BF	REA	Shr	API	TI		
18.9	10.6	31.1	-0.42	0.06	-0.093	0.86	-0.33	132.3	77.5		
25		40				30					

Here's a solid black, balanced EPD sire from our own, time-tested genetics. His sire, SVS TIMBERLINE FB09 is a KOCH BIG TIMBER 685D son out of our SVS SANDY S019 donor cow family that has produced exceptional individuals time and time again. SVS MIDNIGHT TRAIN's dam is from the very predictable COTT RED SILK 887H donor cow family. These unique genetics can't be found anywhere else. SVS MIDNIGHT TRAIN JDZB is moderate in stature, moves with ease, and will become a front pasture sire!

YEARLING BULLS

77

SVS HORNET JBS9

PB SM

POLLED

BLACK

JBS9

ASA#

4074209

DOB

11/11/21

HOOK'S YELLOWSTONE 97Y

SVS BUSTIN' LOOSE EYR7

SVS SHINING STAR YRL7

MR NLC UPGRADE U8676

SVS DO-SI-DO BS09

SVS SANDY S019

HOOKS TAURUS 24T

HOOKS SHEYENNE 77S

SRS RIGHT-ON 22R

SVS ROSEBUD RLB7

ELLINGSON LEGACY M229

MS NLC MOJO S6119 B

BLACK IRISH KANSAS

COTT KELBY 019K

Adj. BW	Adj. WW	Adj. YW	CE	BW	WW	YW	ADG	MCE	Milk	MWW	EPDs %
80	831	1164	10.5	2.4	90.3	134.8	0.28	6.0	27.1	72.2	
					15	15	25	45	25	15	
Stay	Doc	CW	YG	Marb	BF	REA	Shr	API	TI		EPDs %
16.6	13.8	35.5	-0.47	0.05	-0.110	0.94	-0.32	129.9	83.0		
	25	25	25		15	35			30		

Such a fancy papa! This blaze-face bull is smooth in his lines and is loaded with eye-appeal. This SVS BUSTIN' LOOSE EYR7 son exhibits many traits from his dam's side of the pedigree, SVS SANDY S019...the length, the flash and the flare. SVS HORNET JBS9 is a high growth bull who should produce amazing females like his dam, SVS DO-SI-DO BS09. Don't miss this opportunity to add SVS SANDY S019 genetics to your herd!

78

SVS AMERICAN MADE JDA3

PB SM

POLLED

BLACK

Tattoo

JDA3

ASA#

4074224

DOB

11/21/21

CCR COWBOY CUT 5048Z

SVS HIGH FLYER FASB

SVS VIRGINIA BELLE ASHA

SVS FULL MOON ZSJ2

SVS RITA DA33

SVS WILDFIRE AN33

TRIPLE C SINGLETARY S3H

CCR MS 4045 TIME 7322T

MR NLC UPGRADE U8676

SVS SCARLETT SH2A

SVS HUMDINGER TR21

SVS SALLY SJ22

SVS GOLD FINGER SLF2

SVS BLACK SNAP-CRACKLE-P

Adj. BW	Adj. WW	Adj. YW	CE	BW	WW	YW	ADG	MCE	Milk	MWW	EPDs %
77	821	1193	11.1	2.6	80.0	114.6	0.22	6.1	27.5	67.5	
					40			45	25	25	
Stay	Doc	CW	YG	Marb	BF	REA	Shr	API	TI		EPDs %
18.2	13.3	29.8	-0.45	0.13	-0.094	0.93	-0.35	132.7	78.3		
	35	30	45	35		30	40	45			

SVS AMERICAN MADE JDA3 is a solid black, moderate frame bull with performance and maternal traits built in. His sire, SVS HIGH FLYER FASB, is a stylish CCR COWBOY CUT 5048Z son, and his dam is our ultra-feminine donor, SVS VIRGINIA BELLE ASHA. SVS AMERICAN MADE JDA3 is the youngest bull being offered. He exhibits depth, spring of rib and muscle, and will develop into a herdsire to be proud of!

Watch & bid online for FREE at

DVAuction
Broadcasting Real-Time Auctions

Can't make the sale? Bid from home with DV Auction's "real-time" internet bidding service!

Buying online is as easy as 1, 2, 3...

1. Create an account at www.dvauction.com under the "register" tab
2. Apply for bidding approval by clicking on the "details" tab at least 24 hours prior to the auction-a DV representative will notify you once you have been approved
3. Tune in for the sale and make your purchases!

After the sale, contact the sale manager or owner to arrange transportation and payment. **High speed internet** is required for successful bidding-be sure to check the lag-time monitor in the top left corner to ensure real-time broadcasts.

Proxy Bidding-if you can't make time to watch the sale, register a proxy bid and let our system represent your bid while you're away. Look for the "proxy bid" tab on the auction listing, and fill in your maximum bids. We'll handle the rest!

Having troubles? During the auction, you can type a message to the operator at any time for assistance. Our full-time support team can also always be reached at (402) 474-5557.

DVAuction
Broadcasting Real-Time Auctions

Full Service Livestock Marketing

Video - Photography - The Stock Exchange - Ring Service - Banner Ads - Onsite Viewing Service

QUICK REFERENCE TO ASA EPDS AND \$ INDEXES

Expected Progeny Differences (EPDs): EPDs are the most accurate and effective tool available for comparing genetic levels. In using EPDs, the difference between two sires' EPDs represents the unit difference expected in the performance of their progeny. For example, if sires A and B have EPDs of +10 and -5, a 15-unit difference would be expected in their progeny (moving from -5 to +10 yields 15 units).

Key to using EPDs is knowing what units they are expressed in. For example, if the above case referred to weaning weight EPDs, A would be expected to sire 15-pounds more weaning weight than B. If calving ease were the trait, A would be expected to sire 15-percent more unassisted births in first-calf heifers; in other words, if B sired 30 assists in a group of 100 heifers, we'd expect A to require 15 assists. A percentile-ranking chart is required to determine where a bull's EPDs rank him relative to other bulls in the breed. For percentile rankings or more detailed information about EPDs and \$ indexes visit www.simmental.org. Listed below are the units ASA EPDs are expressed in:

All-Purpose Index (API): Dollars per cow exposed under an all-purpose-sire scenario. (See below for more details.)

Back Fat (BF): Inches of backfat.

Birth Weight (BW): Pounds of birth weight.

Calving Ease (CE): Percent of unassisted births when used on heifers.

Carcass Weight (CW): Pounds of carcass weight.

Maternal Calving Ease (MCE): Percent of unassisted births in first-calving daughters.

Milk (MLK): Pounds of weaning weight due to milk.

Marbling (MRB): Marbling score.

Maternal Weaning Weight (MWW): Pounds of weaning weight due to milk and growth.

Ribeye Area (REA): Square inches of ribeye.

Warner-Bratzler Shear Force (WBSF): Pounds of force required to shear a steak.

Stayability (STAY): Percent of daughters remaining in the cow-herd at 6 years of age.

Terminal Index (TI): Dollars per cow exposed under a terminal-sire scenario. (See below for more details.)

Weaning Weight (WW): Pounds of weaning weight.

Yearling Weight (YW): Pounds of yearling weight.

Yield Grade (YG): Yield grade score.

\$ Indexes: Though EPDs allow for the comparison of genetic levels for many economically important traits, they only provide a piece of the economic puzzle. That's where \$ indexes come in. Through well-conceived, rigorous mathematical computation, \$ indexes blend EPDs and economics to estimate an animal's overall impact on your bottom line. The same technology that led to the dramatic progress in swine, poultry and dairy genetics over the last several decades was used to develop the following \$ indexes:

All-Purpose Index (API): Evaluates sires for use on the entire cow herd (bred to both Angus first-calf heifers and mature cows) with the portion of their daughters required to maintain herd size retained and the remaining heifers and steers put on feed and sold grade and yield.

Terminal Index (TI): Evaluates sire for use on mature Angus cows with all offspring put on feed and sold grade and yield.

Using API and TI: First, determine which index to use; if you're keeping replacements use API, if not, TI. Then, just as with EPDs, zero in on the unit difference between bulls. (As described above, index units are in dollars per cow exposed.) The difference can be used to determine how much a bull is worth compared to another. Or, put another way, how much you can pay for one bull compared to another. For example, when buying an all-purpose-type sire, you can quickly figure a bull scoring +100 for API is worth an extra \$6,000 over a +50 bull if both are exposed to 30 cows over 4 years ($\$50 \text{ diff.} \times 30 \text{ hd.} \times 4 \text{ yr.} = \$6,000$). A percentile-ranking chart is required to determine where a bull's index value ranks him relative to other bulls in the breed. For percentile rankings or more detailed information about EPDs and \$ indexes visit simmental.org.



HARD KNOX

FFS JNR HARD KNOX H034

Purebred Simmental • ASA# 3794725

W/C Fort Knox x HILB Miss Versace (W/C Executive Order x AJE Ms Chanel)

- Great pedigree backed by an outstanding sire and the best young red donor in the breed
- Outstanding EPDs & Indexes • Heifer safe • Dark red with just the right amount of white
- Proven bloodlines, his sisters are already making their mark on the breed

CE	Brth	Wean	Year	ADG	MCE	Milk	MWW	Stay	Doc	CW	YG	Marb	BF	REA	Shr	API	TI
13.7	-1.0	79.5	111.6	0.20	5.7	27.0	66.7	14.7	12.8	36.6	-0.31	0.27	-0.042	0.99	-0.27	143.0	85.9
15	10	45	60	85	50	25	30	70	35	25	95	20	99	30	90	25	20

Backed by PROVEN COW FAMILIES!



Dam



Maternal Sister
2022 NWSS Champion Pen of Heifers
Lead-off Female



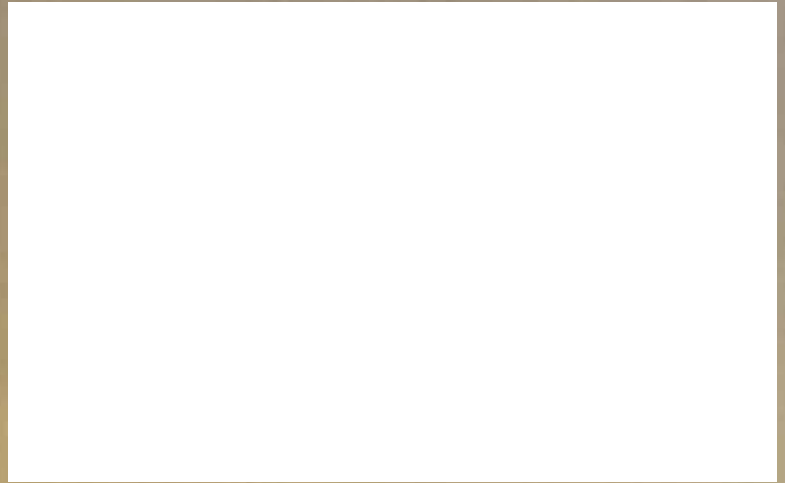
\$64,000 Maternal Sister

CONTACT OWNERS
FOR MORE INFORMATION

Shenandoah Valley Simmentals • Lisa Zirkle, 540-335-1885
Fenton Farms • Todd Fenton, 601-498-4946
Ruble Ranch • Jeremie Ruble, 406-581-7940
The Hard Knox Group



Ruble Cattle Services
1525 140th Street
Corydon, IA 50060



For updated sale information and videos visit
www.rublecattleservices.com or www.shenandoahvalleysimmentals.com

Catalog designed by
 **Generation 6**
marketing
www.generation6.co